

Augmenting Human Power

SUITX CX Series: Ergonomic support for everyone



SUITX
by ottobock.



CX EASY NECK



CX COOL SLEEVES



CX SOFT BACK

Index

Our Compact Exoskeleton Series

All products of our CX series are small but practical additions to our IX AIR exoskeleton range.

Even healthy and well-trained workers quickly reach their limits when performing the same movements over and over again. It is not always high forces or loads that cause us problems – it is the strain of repetitive movements.

Our CX products provide effective relief for individual parts of the body. They can be either used alone or added to the exoskeletons of our IX AIR series.

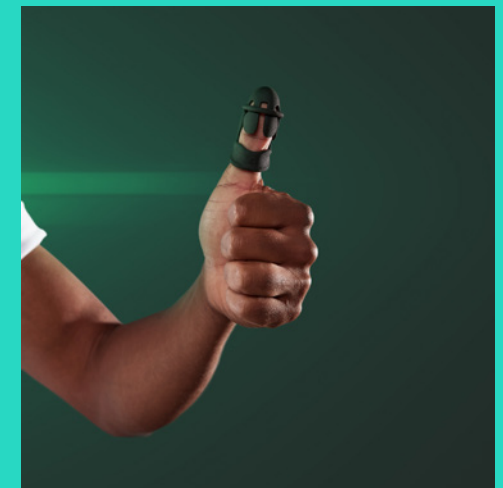
- 4
- 6
- 8
- 10
- 12
- 14

- CX EASY NECK
- CX COOL SLEEVES
- CX SOFT WRIST
- CX SOFT KNEE
- CX SOFT BACK
- CX POWER THUMB



CX SOFT WRIST

CX SOFT KNEE



CX POWER THUMB



High comfort

The feather-light design of the CX EASY NECK makes it very comfortable for the user.



Easy handling

Easy donning and doffing within seconds, and adjustable to individual body sizes.



Combinable

The CX EASY NECK can easily be combined with the IX SHOULDER AIR and thereby enhances the relief to the neck and shoulder areas.



CX EASY NECK



Relief of the cervical spine

The CX EASY NECK relieves the neck area and the cervical spine. Various adjustment options allow it to be customized for each user, making it very comfortable to wear. CX EASY NECK can be worn for any type of overhead work, such as ceiling installations or visual inspections.

Donning and doffing

The CX EASY NECK can easily be attached to the user's belt or belt loops of their pants. If it is worn together with the IX SHOULDER AIR, it can be attached to the neck strap. The strap length is flexible and can easily be adjusted with one hand.



Combinable and comfortable

The CX EASY NECK can be worn by itself or in combination with the IX SHOULDER AIR, our exoskeleton for work above the shoulder. Based on the principle of a hammock, users can simply lay their head back, and the head is supported. Through its support structure, the device evenly distributes the weight of the head over the neck and shoulder area. The biomechanical design of the CX EASY NECK guarantees full freedom of movement.



CX COOL SLEEVES

Cooling sleeves for your upper arm

As an accessory for the IX SHOULDER AIR, we offer the CX COOL SLEEVES for hot environments. It fits perfectly beneath the arm shells of the IX SHOULDER AIR.

Custom fit

The CX COOL SLEEVES are available in sizes M-XXL (upper arm circumference 26-38 cm or 10.2-15.0 in.), thereby ensuring the perfect fit for every user.



Recovery and comfort

In warm environments, the CX COOL SLEEVES offer rapid recovery of the upper arms thanks to the cooling of the arm and shoulder area. The cooling of up to 12°C (22°F) lasts up to 10 hours. In combination with the IX SHOULDER AIR, it keeps the user cool and comfortable.



Easy activation within seconds

The CX COOL SLEEVES activate in seconds with cold water. To do this, simply hold the CX COOL SLEEVES evenly under running water and wait for the fabric to become dark. The specialized material stores the water for the entire time it is in use and can be reactivated at any time.



Usability

The user-friendly design guarantees full freedom of movement and quick donning and doffing.



Comfort

The ergonomic shape and precise fit offers a high level of comfort.



Benefit

Cooling effect is up to 12°C (22 °F).



Relief

CX SOFT WRIST reduces strain when lifting and holding tools.



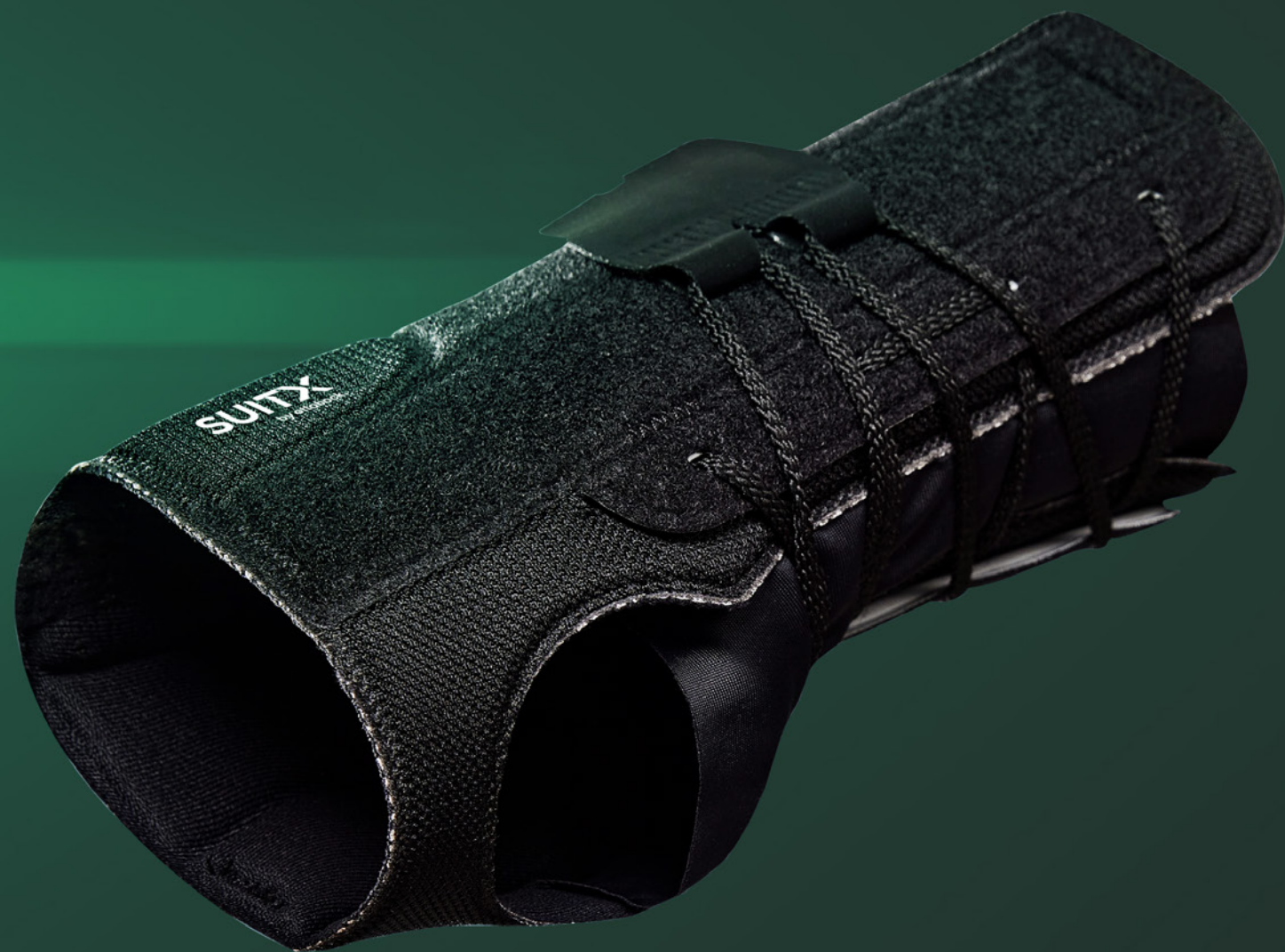
Easy donning

The so-called Pull-2-Lock mechanism makes it easy to don and doff the CX SOFT WRIST with one motion.



Temperature regulation

Innovative Outlast™ material provides optimal thermal comfort; this specialized material was tested in space, among other environments.



CX SOFT WRIST



The exoskeleton for the wrist

The CX SOFT WRIST provides effective support for your wrist during load handling. SUIITX by Ottobock derived the exoskeleton from a medical device developed specifically for the treatment of wrist inflammation. The CX SOFT WRIST uses a preventive approach and bridges the wrist. Applications include holding heavy tools, welding equipment, or moving or assembling generators or starters.

Easy handling

The CX SOFT WRIST is very quick to put on and take off, thanks to the intuitive closing mechanism. Simply insert your hand into the CX SOFT WRIST, place your thumb in the open tab, and pull tightly but comfortably using the Velcro closure. The innovative Outlast™ material, which has even been tested in space, ensures robustness and optimal thermal comfort.



Custom fit

The CX SOFT WRIST is available in sizes S-L (wrist circumference 14-22 cm or 5.5-8.6 in.), thereby ensuring the perfect fit for every user.

CX SOFT KNEE



The ergonomic knee pad

The CX SOFT KNEE supports people who put their knees under daily stress at work. The exoskeleton relieves the knee joint and kneecaps. The CX SOFT KNEE exoskeleton protects the knee from hard surfaces or rough ground. It can be worn as 'inserts' with appropriate work pants. At the same time, the robust materials offer long durability.



Specialized materials

The breathable 3D mesh material reduces sweating when wearing the CX SOFT KNEE. In addition, the orthopedic soft foam adapts to your individual knee shape and offers additional support.

The high-performance flex layers are soft and flexible and outlast other available knee pads. The protective outer layer is hard and robust, offering maximum durability on all surfaces.

Easy cleaning

The CX SOFT KNEE pads are washable by hand in lukewarm water with ph-neutral soap. In this way the materials are best preserved for durability.



Extreme durability

High quality materials ensure a long service life.



Ergonomic shape

Improved pressure distribution and additional protection of the knee cap.



Comfortable fit

Adapts to the knee and fits the majority of work pants.



Improves posture

Supports upright posture when standing and promotes an ergonomic lifting posture.



Easy to use

The CX SOFT BACK can be put on and taken off in a few seconds; 5 sizes ensure a perfect fit.



Immediate relief while standing

The CX SOFT BACK provides slight relief during standing activities. For bending and lifting of heavy loads, we recommend the IX BACK AIR.

CX SOFT BACK

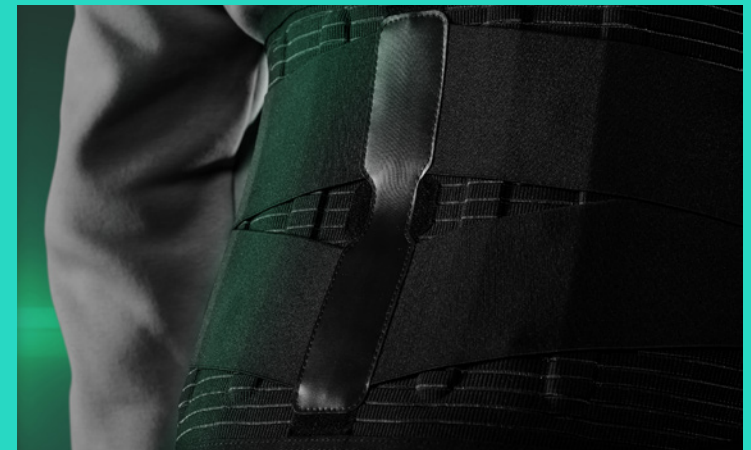


Lower spine support

The CX SOFT BACK offers a high level of support for the lower back. It supports an ergonomic posture when standing and lifting lighter loads. It can be used, for example, in logistics for picking, handling lighter loads, and lifting packages.

Donning and doffing

For the optimal fit of the CX SOFT BACK, simply place the exoskeleton around your hips and close the wide strap with the Velcro fastener. Then fasten the narrower strap over it.



Custom fit

The CX SOFT BACK is available in sizes S-3XL (circumference 80-140 cm or 31.5-55.1 in.), thereby ensuring the perfect fit for every user. The CX SOFT BACK can be worn under or above your clothes, but for hygienic reasons, it should not be worn directly on the skin.





Relief for the thumb

CX POWER THUMB reduces the stress on your thumb joint by up to 70 % by distributing the forces throughout the hand.



Easy handling

The CX POWER THUMB is perfect for everyday use because it can be put on and taken off quickly, has full freedom of movement for the thumb joint, and is easy to clean.



Perfect fit

Thanks to the 7 available sizes, there is a suitable CX POWER THUMB for almost every thumb. With the help of our trial set, you can easily find out which size you need.



CX POWER THUMB



The smallest exoskeleton in the world

The CX POWER THUMB protects the thumb during clipping, sticking or pressing tasks. The thumb and saddle joints are protected by distributing the forces to the hand during these activities. Furthermore, the smallest exoskeleton in the world provides mechanical protection.

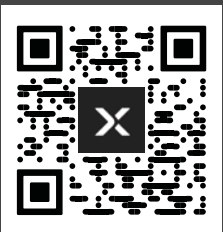
CX POWER THUMB in action

The CX POWER THUMB supports people who use their thumbs every day at work. The exoskeleton relieves the thumb end joints and the saddle joints. Wearing the CX POWER THUMB exoskeleton relieves the thumb by distributing the forces to the entire hand and provides mechanical protection for the tip of the thumb.



Fit for your thumb

The biomechanical design of the CX POWER THUMB allows full freedom of movement of the thumb joint. We offer you 7 different sizes in a trial set so that you can find the perfect fit for each thumb, whether left or right. Donning and doffing takes just a few seconds. Cleaning is also quick and easy; simply wipe the CX POWER THUMB with a damp cloth.



www.suitx.com