



Patterns of Error in Emergency Radiology



Fausto Labruto
Associate Professor
Director of Emergency Radiology

Patterns of Error in Emergency Radiology

I. Missing

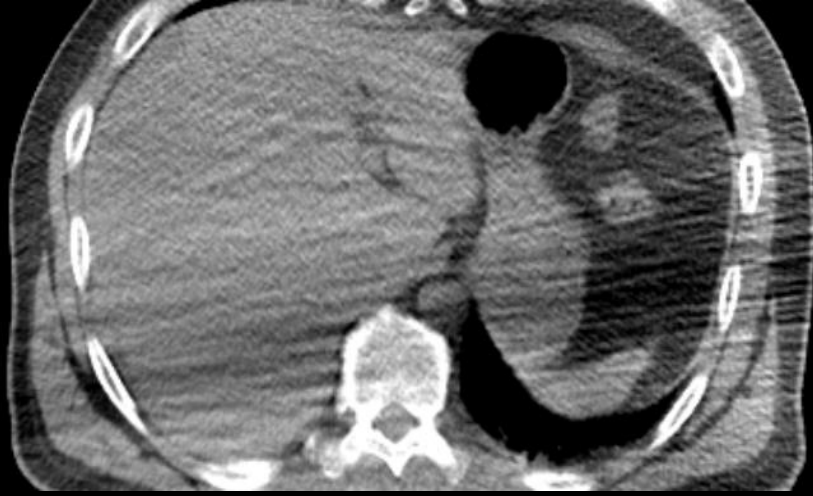
II. Misinterpreting

III. Miscommunicating

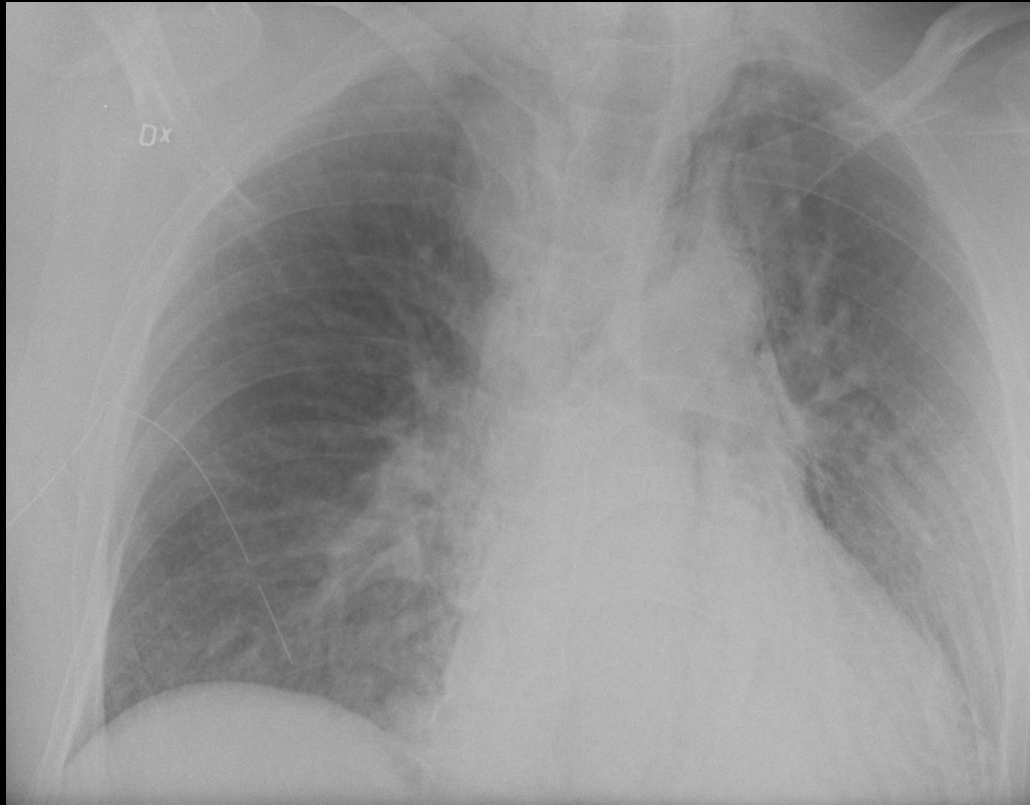
Missing

- Suboptimal images
- Overlooked projections
- Failed image processing
- Disruption of search pattern
- "Forgetting that a pathology exists"

Suboptimal images



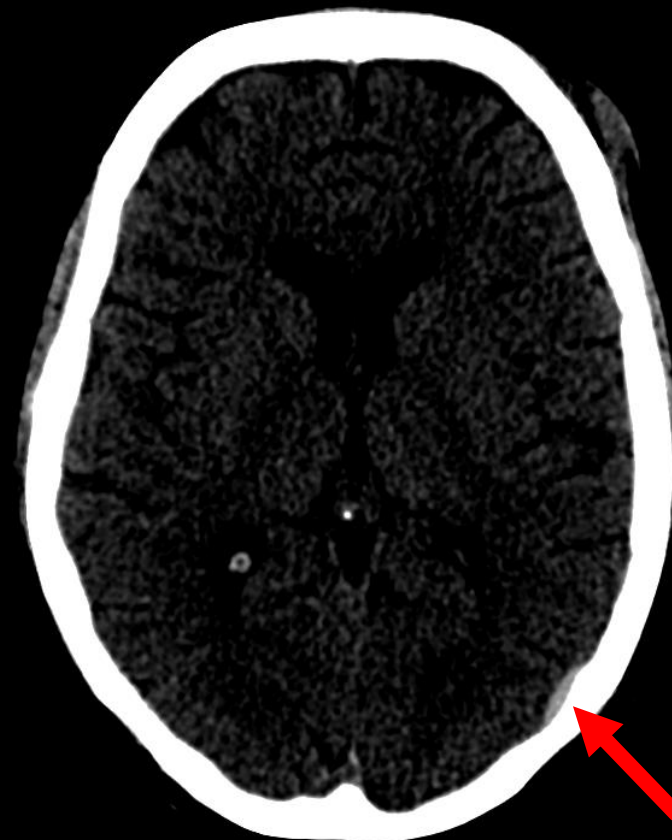
Overlooked projections



Failure at image processing



C = 40, W = 80

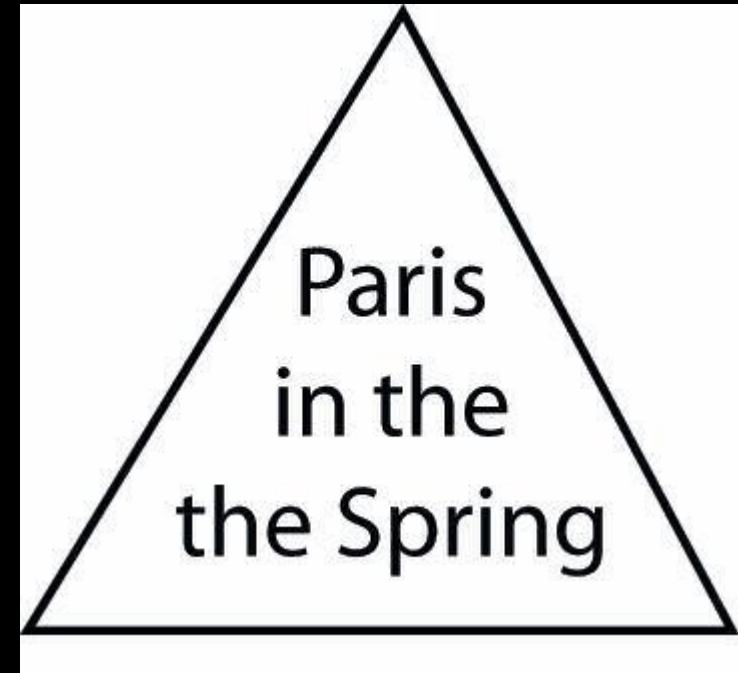


C = 70, W = 90

Disruption of Search Pattern

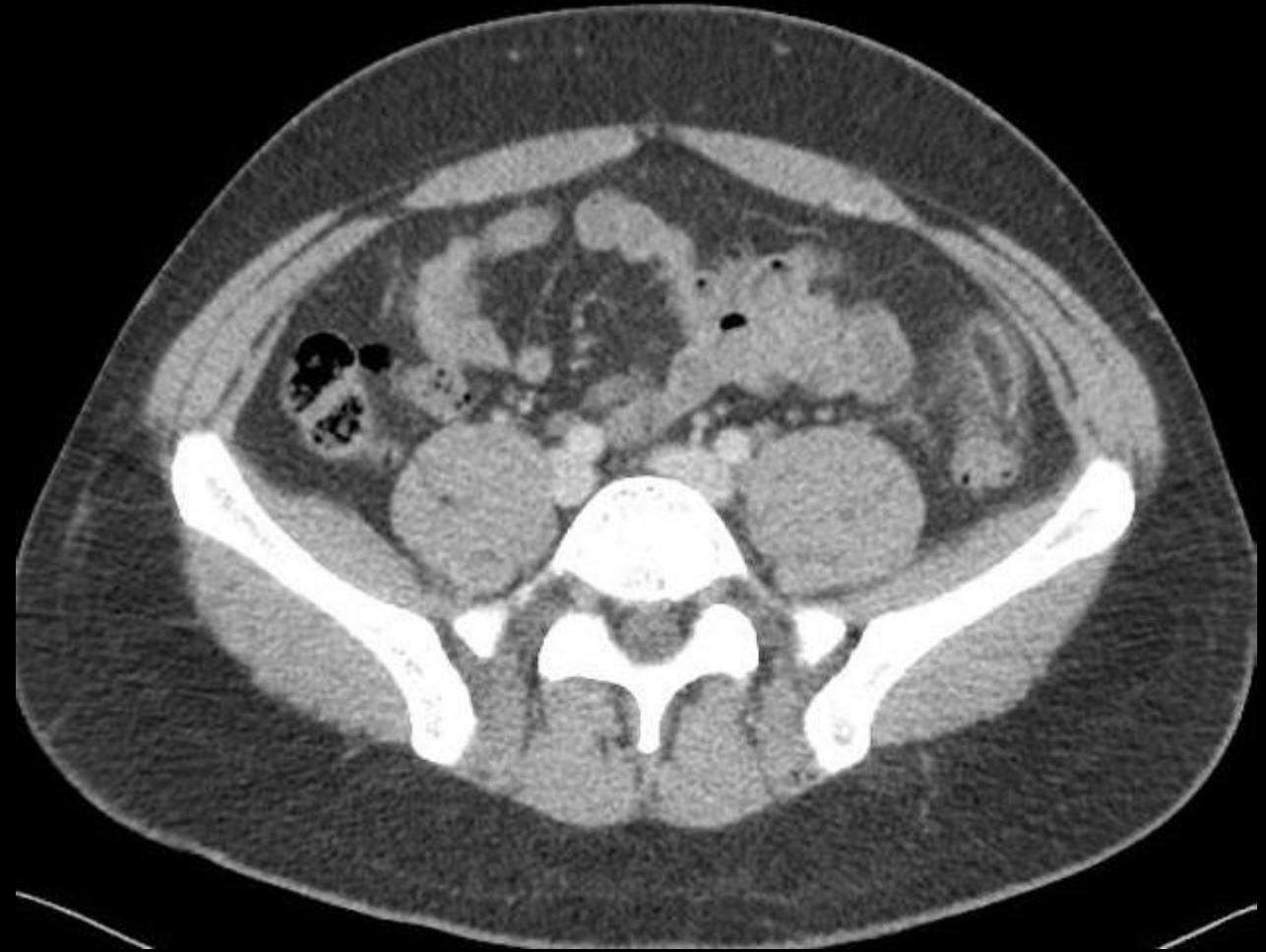


Distractions



Satisfaction of Search

Forgetting that a pathology exists



Patterns of Error in Emergency Radiology

I. Missing

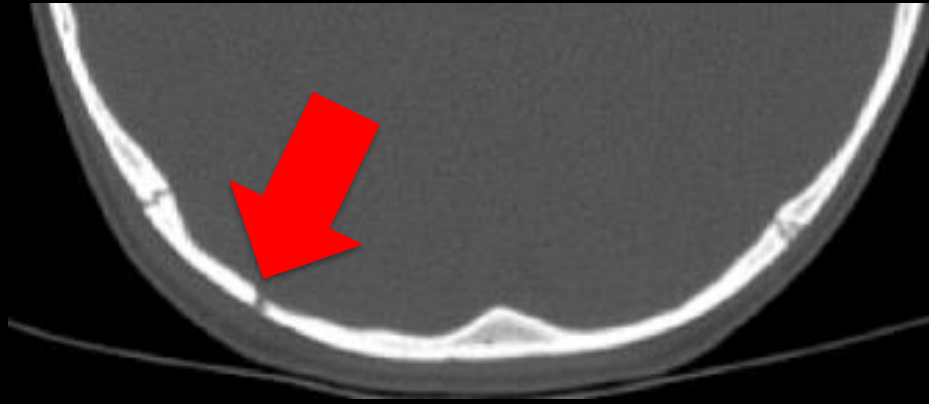
II. Misinterpreting

III. Miscommunicating

Misinterpreting

- Misinterpreting normal for pathological (or viceversa)
- Misinterpreting a pathology for another pathology
- Underestimating / overestimating the seriousness of a finding

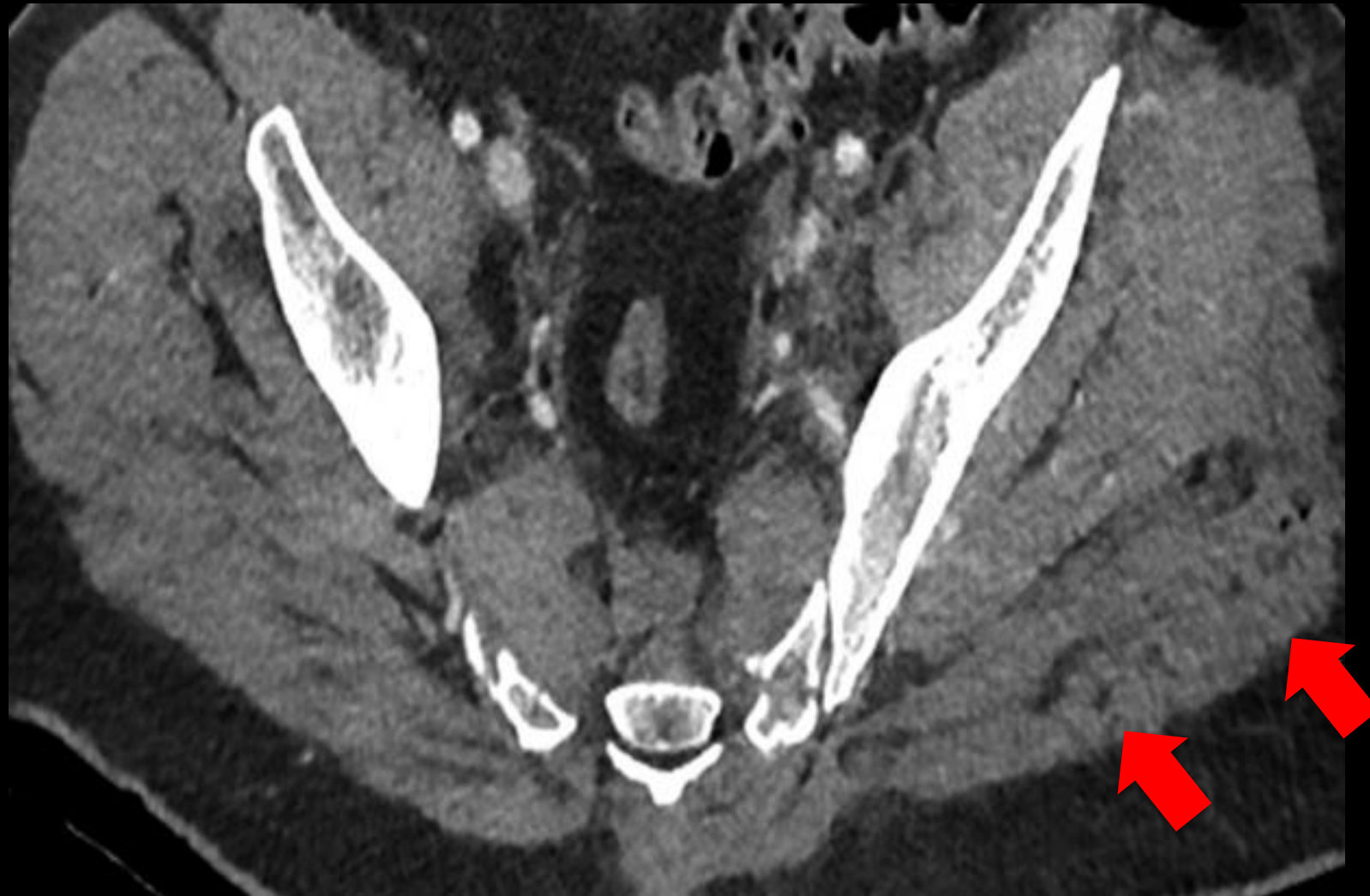
Misinterpreting



Misinterpreting



Underestimating / overestimating the severity of a pathological finding



Patterns of Error in Emergency Radiology

I. Missing

II. Misinterpreting

III. Miscommunicating

Miscommunicating

Verbal

- Failure to contact the clinician for critical findings
- Discrepancies verbal vs report

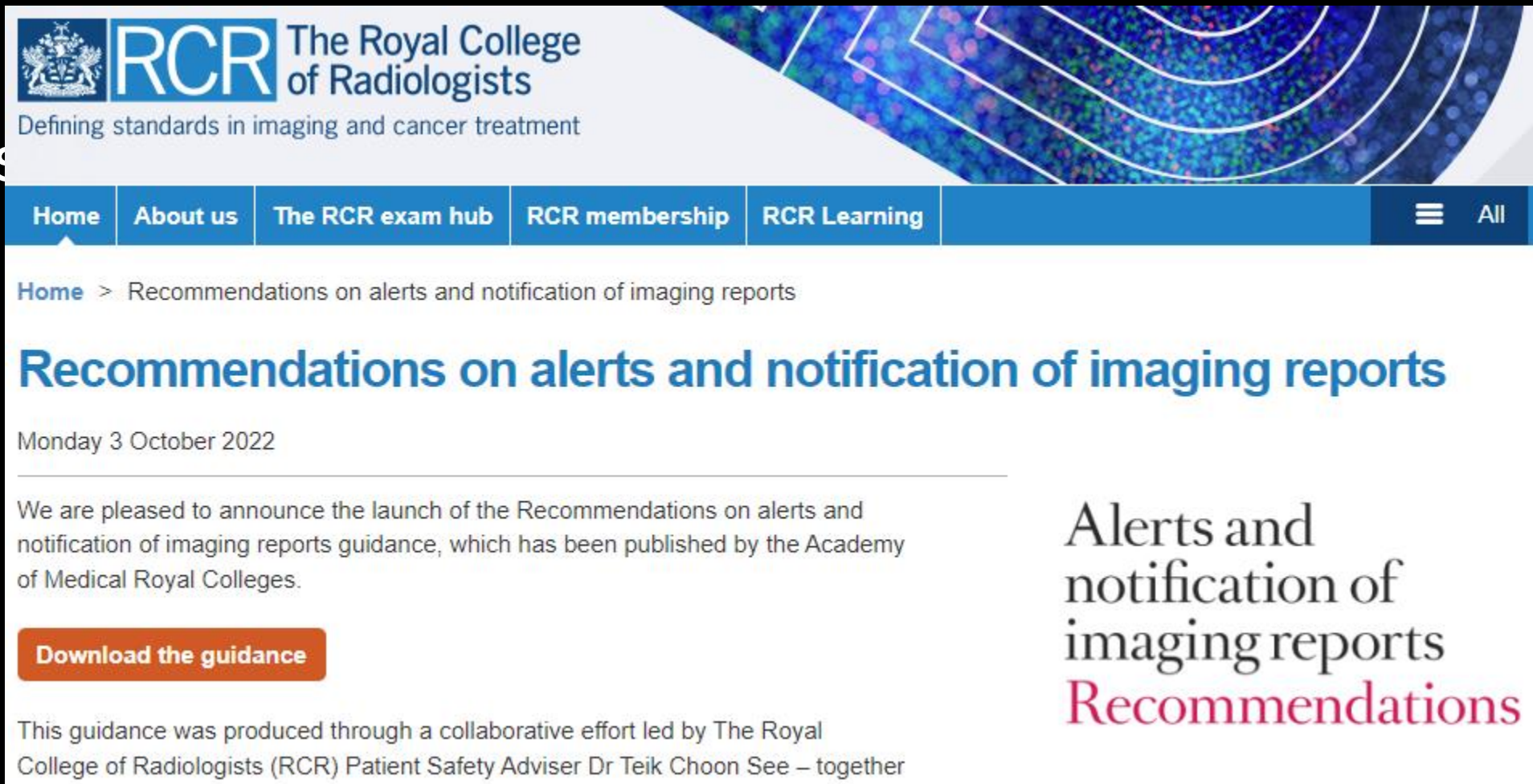
Report

- Too long / too short
- Too complicated
 - Obscure language (abbreviations)
 - Elaborated descriptions
 - Too many differentials
 - Messy
- Language errors
 - VR mistakes
 - L-R mistakes
 - Grammatical errors
 - Typos
- Discussing uncertainties

Verbal

- Failure to contact the clinician for critical findings

- Dis



The screenshot shows the top of a website for The Royal College of Radiologists (RCR). The header includes the RCR logo and the text 'The Royal College of Radiologists' and 'Defining standards in imaging and cancer treatment'. A navigation bar contains links for 'Home', 'About us', 'The RCR exam hub', 'RCR membership', and 'RCR Learning', along with a menu icon and the word 'All'. Below the navigation bar, the breadcrumb trail reads 'Home > Recommendations on alerts and notification of imaging reports'. The main heading is 'Recommendations on alerts and notification of imaging reports' in a large blue font, with the date 'Monday 3 October 2022' underneath. The main text states: 'We are pleased to announce the launch of the Recommendations on alerts and notification of imaging reports guidance, which has been published by the Academy of Medical Royal Colleges.' Below this text is an orange button labeled 'Download the guidance'. To the right of the main text is a large graphic with the text 'Alerts and notification of imaging reports' in black and 'Recommendations' in red. At the bottom, a small line of text reads: 'This guidance was produced through a collaborative effort led by The Royal College of Radiologists (RCR) Patient Safety Adviser Dr Teik Choon See – together'.

RCR The Royal College of Radiologists
Defining standards in imaging and cancer treatment

[Home](#) [About us](#) [The RCR exam hub](#) [RCR membership](#) [RCR Learning](#) [All](#)

[Home](#) > Recommendations on alerts and notification of imaging reports

Recommendations on alerts and notification of imaging reports

Monday 3 October 2022

We are pleased to announce the launch of the Recommendations on alerts and notification of imaging reports guidance, which has been published by the Academy of Medical Royal Colleges.

[Download the guidance](#)

This guidance was produced through a collaborative effort led by The Royal College of Radiologists (RCR) Patient Safety Adviser Dr Teik Choon See – together

Alerts and notification of imaging reports
Recommendations

Verbal

- Failure to contact the clinician for critical findings
- Discrepancies verbal vs report

Documentation is key

Report

- Too long / too short

Less is more

Report

- Too complicated
 - Obscure language
 - Elaborated descriptions
 - Too many differentials
 - Messy

Adapt to the language
of the receiver

Report

- Language errors
- VR mistakes
- L-R mistakes
- Grammatical errors
- Typos

Proof-read all your reports

Report

Discussing uncertainties

When facing an uncertain finding:

- Be honest about the uncertainty
- *Concisely* explain your doubts
- Suggest the next step

Conclusions

Miscommunications can happen because of:

- Workflow errors in giving a verbal
- Using a language which does not adapt to the receiver
- Using language to hide our uncertainties

Thank you!



fausto.labruto@unilabs.com