

Operations Manual

Pinnacle Pro - 23"x25" Bun Caramelizer Grill

Model #: BC2325



PROLUXE
WWW.PROLUXE.COM

Version: 51719

Congratulations on your selection of the Pinnacle Pro Bun Caramelizer. Proluxe is a leading manufacturer of food preparation and cooking equipment designed for the most demanding commercial kitchens. Proluxe equipment is a result of the highest quality engineering and time-tested design.

This manual includes installation, operation, and maintenance procedures for your bun caramelizer. Please read this manual carefully and keep it with your machine for proper operation and lasting service.

Electrical:

208V/50-60Hz/3800W/18.2 Amps
1 phase

Also available; specify when ordering:

- Voltage: 208/220
- Amps: 18.2/10/18.3
- Watts: 3800/4251

Includes: 72" cord and 6-30P NEMA approved plug.

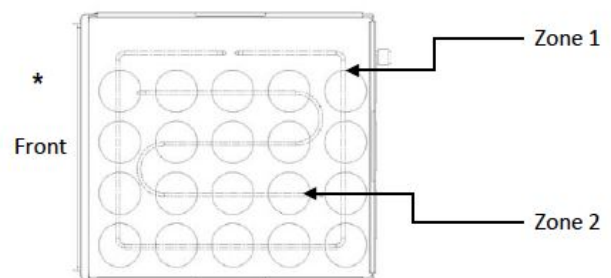
Controlled heating zones: 2

Shipping Weight:
117lbs. (53kg)

GETTING STARTED

Please read carefully before attempting to use this appliance. **DO NOT** touch hot surfaces.

1. Carefully unpack and clean plates with mild soap and wipe clean with water.
2. Place in location where it will be used allowing for clearances per the dimensions.
3. Plug into proper 208V wall outlet. If other appliances are connected to the same circuit make sure the total load does not exceed maximum ampacity of the circuit.
4. Press the power button, the green light above will illuminate when powered on. Preheat time will be approximately 30-40 minutes.



TEMPERATURE/TIMER SETTINGS

To set the temperatures and timers for each heating zone please follow the directions provided:

Adjusting the Set Temperature

1. To adjust the temp on zone 1, hold down the MODE button for 5 seconds. Zone 1 temp should appear.
2. Hold the SET button and using the up (↑) and down (↓) adjust the temperature to your desired setting.
3. Once your desired temperature is set, push the MODE button to adjust zone 2 and repeat step 2.
4. Press MODE again to return to the timer function.

Adjusting the Set Time

1. To set the desired timer on the far left control, using the up (↑) and down (↓) adjust the timer to your desired time.
2. To initiate the countdown of the timer press the SET button. To stop the countdown or reset the expired timer press the SET button again.
3. To set the additional timers on the right side of the front panel, using the up (↑) and down (↓) adjust the timer to your desired time.
4. Press the START and STOP button to begin the timer countdown. You may stop the countdown at anytime by pressing the START and STOP button again.

Note: When adjusting the timer settings, the right set of buttons control the left side. Your left side timer will automatically set to your right control settings. If you desire a separate left timer you can manually adjust

the left side timer without affecting the right timer.

Cleaning Removable Pedestals

1. Unit must be turned off to allow pedestals to cool.
2. Once the unit has cooled you can remove the pedestals and rinse them with a mild detergent in warm water.

Note: If using oil or butter on the buns you will need to clean the pedestals with an approved aluminum cleaner.

DO NOT submerge pedestal under water while they are hot. It can cause them to crack and void warranty.

3. Once the pedestals have been cleaned you will need to dry them.
4. Once all components are clean and dry then can be placed back on the unit.

CAUTION: ONLY REMOVE PEDESTALS BY SLIDING THEM OFF THE GRILL SURFACE. FAILURE TO DO SO WILL CAUSE DAMAGE TO MAGNETS OVER TIME.

PREVENTATIVE MAINTENANCE

Proluxe machines are relatively maintenance free. For a long lifespan, the following preventative maintenance should be followed:

Daily Care:

1. Platens: Turn your machine off and allow to cool down before attempting to clean. The pedestals should only be cleaned with mild soap and warm water then wiped off with a clean, soft cloth or soft sponge.

2. Exterior surfaces: Wipe daily with mild soap and warm water.

DO NOT use ice or cold water to cool the unit down. This can cause the machine to warp.

Service Problems:

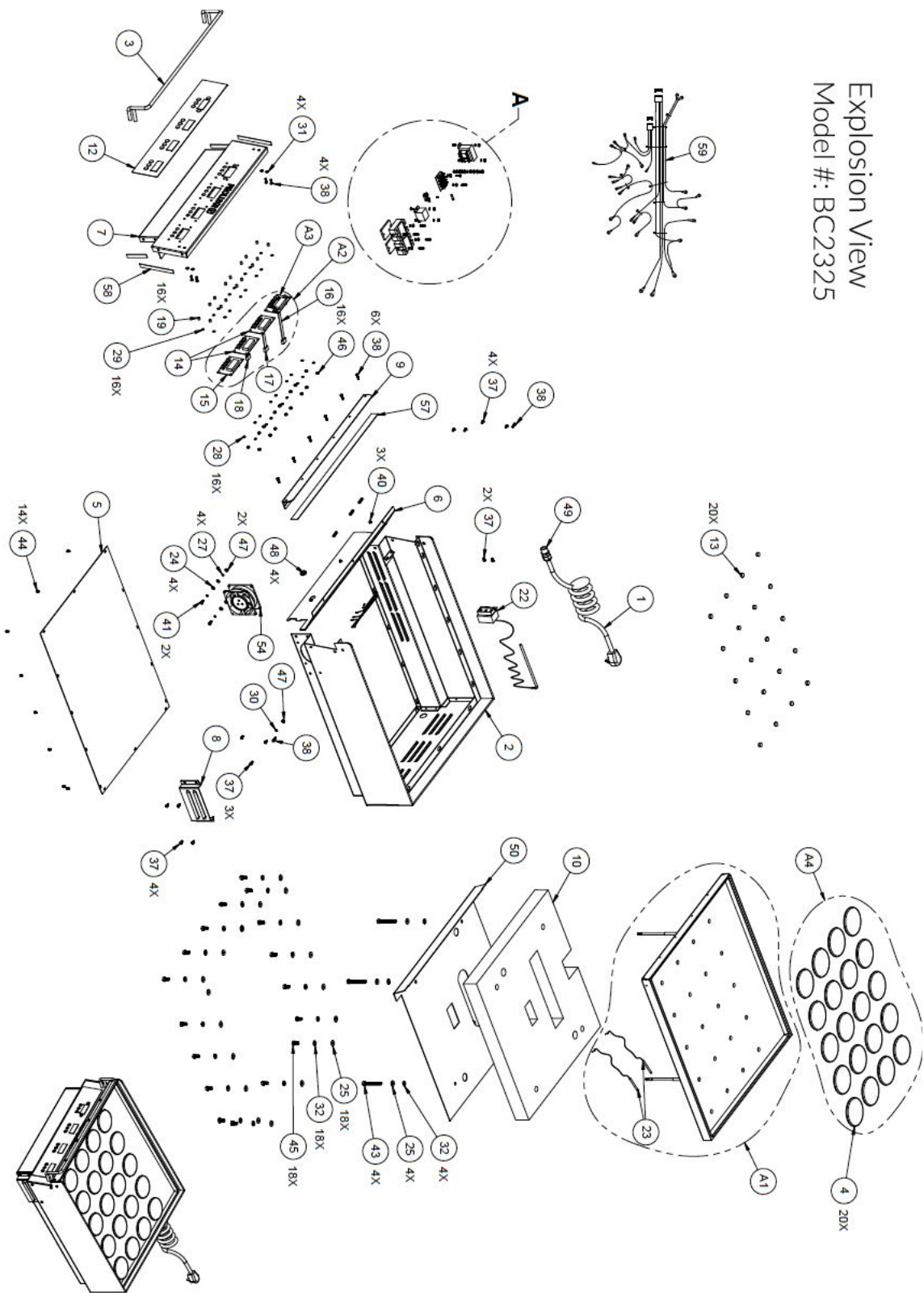
Contact our factory at (800) 624-6717 (U.S. only) or approved service agency. When contacting the factory for information, parts or service instructions, please provide the serial number of the machine be provided. This number can be found on the serial plate located on the rear of the machine.

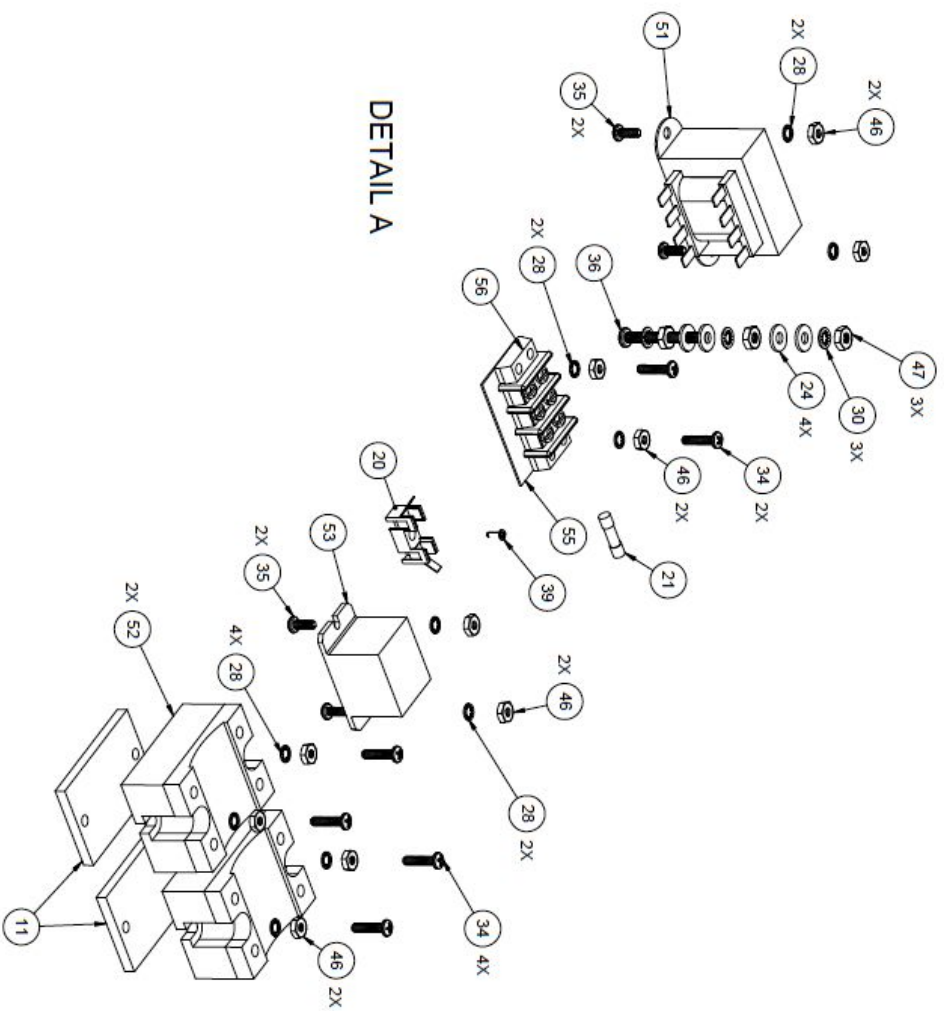
Pinnacle Pro Troubleshoot Guide - Model #: BC2325

Problem	Cause	Action
Power button on digital controller face is depressed but doesn't turn on.	<ol style="list-style-type: none"> 1. Power cord is not plugged in. 2. Circuit breaker is tripped off in the site's breaker box. 3. Transformer has taken an electrical surge and is damaged. 4. Check voltage on the secondary side of the Transformer. If you read 12VDC then you are receiving voltage to the controller. 5. Possible blown fuse. 	<ol style="list-style-type: none"> 1. Plug the power cord into wall receptacle and power button. 2. Reset circuit breaker that the grill is plugged into. Depress power button to turn on. 3. Replace transformer. 4. Replace controller. Controller should be on once the power button is depressed. 5. Replace fuse.
Digital controller's LED's are scrambled or randomly erratic. If when turning on, the display will first go to segment check	<ol style="list-style-type: none"> 1. Possibly a component on the Digital controller is damaged. 2. Control needs to reset. 	<ol style="list-style-type: none"> 1. Replace the digital controller. Other three timers should be working properly. 2. While unit is on unplug unit, wait for 1 min. Then plug machine on again and depress the power button.
Digital display shows Relay and particular zone is over heating or outer zone).	The mechanical relay on the switched side is not opening to regulate temperature.	Replace the mechanical relay.
Digital display shows PROB. No heat on any platen.	Sensor in one of two zones lost it's continuity.	Disconnect prob that is open (no continuity as shown on a multi-meter. Must replace sensor (RTD). Do not cut and splice new sensor. Install new 2000 ohm RTD sensor to under side of heat platen and reconnect to the controller.
Digital controller beeping and is overheating.	The mechanical relay on the switched side is not opening to regulate temperature. Hold TEMP button then depress either the down or up arrow	Replace the mechanical relay.

	(zone 1, lower platen, zone 2, left upper platen and zone 3, right upper platen.) RLY will display on problem zone indicating the damage.	
Either platen is not heating but the digital controller is on and appears to be functioning.	If the mechanical relay(s) on the coil side are receiving 12vdc indicates the controller is functioning properly. If there is no voltage on the switching side of the relay to the heaters, the relay is not working properly.	Replace the mechanical relay.
Beeper is not functioning.	Beeper has failed.	Replace control board.
One of the three heater platens not close to set point.	The offset function in the controller's setting needs to be adjusted to achieve proper shade of toast.	Call (800) 624-6717 for instructions.
One heating zone is not reaching setpoint and another heater is overheating.	Sensors may be crossed.	Make sure each sensor is connected to its prospective position on the terminal block and back to the controller.
Setpoint is reached but slightly off in temperature.	Offset may need to be calibrated and adjusted.	Call (800) 624-6717 for instructions.
Heater platen is overheating.	<ol style="list-style-type: none"> 1. The mechanical Relay may be stuck in the closed position (zone 1, lower platen #1 labeled on this relay, zone 2, left upper and zone 3, right upper). 2. If you are receiving 12vdc on the coil of the relay, the controller is properly functioning. 	Use an Ohm meter for a continuity check must check at the cold pins of the heater (where the heater wire is brazed at the cold pin. This will eliminate any other failure before the heater element validating the loss off continuity at the source the heater element.

Explosion View Model #: BC2325





DETAIL A

Pinnacle Pro Part List - Model #: BC2325

ITEM #	DESCRIPTION	BC2325E	BC2325MVE	BC2325RE	QTY
1	POWER CORD 30AMP	110573175	110573175	110573175	1
2	FRAME WELDING ASSEMBLY	11057301	11057301	11057301	1
3	BELLY GUARD WELDING ASSY	110100927	110100927	110100927	1
4	PEDESTAL ASSY	11057317	110105117	11057317	20
5	BOTTOM COVER	11057312	11057312	11057312	1
6	PANEL TEMPERATURE DIVIDER	11057345	11057345	11057345	1
7	FRONT PANEL ASSEMBLY	11057311	11057311	11057311	1
8	COVER, FAN	11057313	11057313	11057313	1
9	BURN GUARD ASSEMBLY	11057340	11057340	11057340	1
10	BC2325 INSULATION	11057343	11057343	11057343	1
11	SINK, HEAT, ALUMINUM (SSR)	11057322	11057322	11057322	2
12	OVERLAY CONTROLLER/TIMER BC2325	ODBC2325	ODBC2325	ODBC2325	1
13	MAGNET	11057320	11057320	11057320	20
14	TIMER, DIGITAL WITHOUT BUZZER	110573053	110573053	110573053	2
15	TIMER, WITH BUZZER BC2325	110573055	110573055	110573055	1
16	RIBBON CABLE 13.5" LONG BC2325	11057350	11057350	11057350	1
17	RIBBON CABLE 9" LONG	11057349	11057349	11057349	1
18	RIBBON CABLE 4.5" LONG	11057348	11057348	11057348	1
19	NYLON SPACER, 1/4 X .141 X 9/32 LONG	110969111	110969111	110969111	16
20	FUSE HOLDER 1 AMP	MPPF708	MPPF708	MPPF708	1
21	FUSE BUSS 1 AMP	MPPF701R	MPPF701R	MPPF701R	1
22	LIMITER,HIGH TEMP.	110966046	110966046	110966046	1
23	RTD SENSOR ASSEMBLY	110949110	110949110	110949110	2
24	WASHER, SAE #8	WSAE8	WSAE8	WSAE8	8
25	WASHER, SAE 5/16	WSAE516	WSAE516	WSAE516	22
26	WASHER SAE #6	WSAE6	WSAE6	WSAE6	1
27	WASHER, SPLIT LOCK #8	WSL8	WSL8	WSL8	4
28	WASHER, INTERNAL TOOTH LOCK #6	WLIT6	WLIT6	WLIT6	26
29	WASHER, .311 OD X .150 ID X .20 THK	311150019	311150019	311150019	16
30	WASHER, INTERNAL TOOTH LOCK #8	WLIT8	WLIT8	WLIT8	4
31	WASHER, INTERNAL TOOTH LOCK 10-32	WLIT10	WLIT10	WLIT10	4
32	WASHER, LOCK 5/16	WL516	WL516	WL516	22

33	SCREW, SET 3/8-16 X 1/2	SST381612	SST381612	SST381612	5
34	SCREW, PAN HEAD PHILLIPS 6-32 X 5/8	SP63258	SP63258	SP63258	6
35	SCREW, PHILLIPS PAN HEAD 6-32 X 3/8	SP63238	SP63238	SP63238	4
36	SCREW, PAN HEAD PHILLIPS 8-32 X 1-1/2 SS	SP832112S	SP832112S	SP832112S	1
37	SCREW, PAN HEAD PHILLIPS 8-32X 3/8 SS	SP83238S	SP83238S	SP83238S	13
38	SCREW, SLOTTED PAN HEAD 10-24 x 5/8 SS	SPS102458S	SPS102458S	SPS102458S	12
39	SCREW, PHILLIPS PAN 2-56x1/4	SP25614	SP25614	SP25614	1
40	SCREW, PAN 8-32 X 1/4 SELF TAPPING	SP83214ST	SP83214ST	SP83214ST	3
41	SCREW, PAN HEAD PHILLIPS 8-32 X 1/2 SS	SP83212S	SP83212S	SP83212S	2
42	SCREW, PAN HEAD PHILLIPS 6-32 X 1/4	SP63214	SP63214	SP63214	1
43	BOLT, HEX 5/16-18 X 2-1/2" GR5	BH51618212G5	BH51618212G5	BH51618212G5	4
44	BOLT, HEX 8-32 X 1/4 SS	BH83214S	BH83214S	BH83214S	14
45	BOLT, HEX 5/16-18 X 5/8 L SS	BH5161858S	BH5161858S	BH5161858S	18
46	NUT, HEX 6-32	NH632	NH632	NH632	26
47	NUT, HEX 8-32	NH832	NH832	NH832	6
48	GROMMET, 7/16 ID	11057321	11057321	11057321	4
49	STRAIN RELIEF HEYCO 1/2"	3231	3231	3231	1
50	INSULATION RETAINER	11057344	11057344	11057344	1
51	TRANSFORMER 115/230 - 24~AC	MPPT700R	MPPT700R	MPPT700R	1
52	RELAY, SOLID STATE	MPR90217	MPR90217	MPR90217	2
53	RELAY, MECHANICAL 30AMP	110942520	110942520	110942520	1
54	FAN	11057314	11057314	11057314	1
55	MARKER STRIP #3	MS6013	MS6013	MS6013	1
56	TERMINAL BLOCK #2, DOUBLE	6013	6013	6013	1
57	1" TEFLON TAPE	11057341	11057341	11057341	2.25FT
58	1/2" TEFLON TAPE	110966111	110966111	110966111	1.2FT
59	WIRE HARNESS BC2325	110573050	110573050	110573050	1
60	BC2325 MANUAL	MBC2325	MBC2325MVE	MBC2325RE	1
A1	TOP PLATEN WIRING ONLY	110573201	110573201	110573201	1
A2	DIGITAL CONTROL WITH TIMER DISPLAYS	1101026052	1101026052	1101026052	1
A3	CONTROLLER, DIGITAL	110573056	110573056	110573056	1
A4	KIT, PEDESTALS	11057317K	110105117K	11057317K	1

Warranty & Return Policy

Proluxe warrants all products manufactured by it against defects in workmanship or materials from the date of purchase for a period of 1 year on parts and labor. This warranty applies to only equipment purchased and used in the United States.

Warranty period shall begin when equipment ships. Warranty travel will only be covered for 60 miles.

ALL WARRANTY SERVICE CALLS MUST BE APPROVED BY PROLUXE. IF THIS PROCEDURE IS NOT FOLLOWED, WARRANTY SERVICE WILL NOT BE COVERED. WARRANTY SERVICE WILL BE PAID ON STRAIGHT TIME, OVERTIME WILL NOT BE COVERED.

Service Calls

Contact our factory to obtain warranty service. Proluxe must issue a return authorization number, and call tag, or find the name and location of a Factory Authorized Service Center nearest you. When calling for service, please furnish the model number, serial number, and a description of the problem.

EXCLUSIONS

The warranties provided by Proluxe DO NOT apply to the following:

- Damage due to misuse, abuse, alteration, or accident.
- Improper or unauthorized repairs.
- Submerged in water.

- Damaged in shipment.
- Equipment exported to foreign countries.

Special Order Equipment and Accessories

Cannot be canceled and are not returnable unless defective within the terms of this warranty.

In no event shall Proluxe be liable for consequential damages arising out of the failure of any of its products if operated improperly or caused by normal wear or damaged by operator abuse.

Limited Lifetime Warranty on Heating Elements

If replacement is needed, Proluxe will send the new part at no charge but labor will not be covered unless the unit is still under the 1 year manufacturer warranty.

RETURNED MERCHANDISE POLICY

Should it become necessary to return any of the company's products, the following instructions must be adhered to: First, contact our customer service department for approval and a return authorization number. Please have the serial number of your item available at that time. All merchandise must be shipped freight prepaid by customer or service agency. Subject to the inspection of the product by the company, a restocking charge of 20% of the Net purchased price paid to Proluxe will be assessed.

Merchandise may not be returned for credit without prior written approval of Proluxe.

Collect shipments will not be accepted. No returns after 60 days of original shipment date on machines. Purchased parts may not be returned after 30 days. If upon inspection by Proluxe or its authorized agent it is determined the equipment has not been used in an appropriate manner, has been modified, or has not been properly maintained, or has been subject to misuse, misapplication, neglect, abuse, accident, unauthorized modification, damage during transit, delivery, fire, flood, act or war, riot or act of God, then this warranty shall be deemed null and void.

TERMS & CONDITIONS

1. Price List prices are suggested retail prices and are shown in U.S. Dollars.

2. Terms of Payment: 1% 10 days, NET 30 days.

3. New Accounts: Satisfactory credit information must be provided before open account status can be extended.

Unless agreed otherwise, all shipments will be made C.O.D., Cash in advance.

4. Pricing: Prices, specifications, model numbers, capacities and accessories are subject to change without notice.

5. Freight/Routing: Method of shipment will be determined by Proluxe unless otherwise advised by purchaser.

6. Damaged Claims: All merchandise shipped at purchaser's risk. Inspection must be made by purchaser at time goods are received. If goods are damaged, the PURCHASER shall request that the agent of the transportation company make a written notation on the proper shipping documents immediately and then file a claim for damages.

Note: Goods damaged in shipping are non-returnable.

7. Returns: Machines may not be returned after 60 days. Purchased parts may not be returned after 30 days. A restocking fee of 20% will be assessed on non-warranty returns.

8. Taxes: Prices indicated herein DO NOT include State, Federal, Local or foreign taxes or duties, nor do they include fees, permits, insurance or other levies, all of which are the responsibility of the purchaser.

9. All orders are subject to acceptance by Proluxe.

10. Possession of this price list shall not be considered an offer to sell