

Operations Manual

Vantage SL - Split Lid Grill

Model #: SL1577



PROLUXE
WWW.PROLUXE.COM

Congratulations on your selection of the Vantage SL Compact Split Lid Grill. Proluxe is a leading manufacturer of food preparation and cooking equipment designed for the most demanding commercial kitchens. Proluxe equipment is a result of the highest quality engineering and time-tested design.

This manual includes installation, operation, and maintenance procedures for your new split lid grill. Please read this manual carefully and keep it with your machine for proper operation and lasting service.

Electrical:
120V/50-60Hz/220W/18.3 Amps
1 phase

Also available; specify when ordering:

- Voltage: 120/208/220
- Amps: 18.3/10
- Watts: 2200/2200/2800

Includes: 72" cord and 6-30P NEMA approved plug.

Controlled heating zones: 3

Shipping Weight:
78lbs. (35kg)

GETTING STARTED

Please read carefully before attempting to use this appliance.

1. Place in location where it will be used allowing for clearances per the dimensions indicated. Allow 2" minimum clearance between adjacent equipment and/or wall areas.
2. Plug into proper 3 prong wall outlet. If other appliances are connected to the same circuit make sure the total load does not exceed a maximum ampacity of the circuit. Electrical information is as follows:
3. Press the power button, the green light above will illuminate when powered on. The display flashes and shows left preset timer during warm-up. Pre-heat time will be 40-50 minutes. When the set point is reached, the display stops flashing and beeps 3 times.
4. Simply place product on either side of the grill, close lid and press the desired preset time cycle 10 or 20 seconds. After the time cycle is finished press it again to reset the time cycle.

TEMPERATURE/TIMER SETTINGS

How to Find Set Temperature

To find the temperature of upper platens:
Press and hold the TEMP button and the arrow up (↑) button at the same time.

To find the temperature of bottom platens:
Press and hold the TEMP button and the arrow down (↓) button at the same time.

Adjusting the Set Temperature

1. Press and hold the TEMP button and the arrow up (↑) button at the same time for 15 seconds.
2. The current temperature with display on the right digital display screen only.
3. Using the up (↑) and down (↓) adjust the temperature to your desired setting.
4. Once your desired temperature is set, push the TEMP button to return.

Adjusting the Set Time

1. Press the TEMP button first and then select the desired timer button and hold for 5 seconds.
2. The current temperature with display on the right digital display screen only.
3. Using the up (↑) and down (↓) adjust the timer to your desired setting.
4. Once your desired temperature is set, push the TEMP button to return.

Note: When adjusting the timer settings, the right set of buttons control the left side. Your left side timer will automatically set to your right control settings. If you desire a separate left timer you can manually adjust the left side timer without affecting the right timer.

CLEAN CYCLE

Start Cycle

To start a clean cycle, push CLEAN button once so the CLEAN LED light is turned on. All preset LED's are turned off, and the temperature set point is changed to the clean set point of 275°F. This also initiates the cool down to clean set point condition as well the display starts flashing until the clean set point is reached.

Stop Cycle

To stop the clean cycle, simply press the CLEAN button once to deactivate the clean cycle. The CLEAN LED is turned off, the preset LED's are restored, the temperature set point is changed to the main set point. Again, the warm-up condition is initiated and the display flashes until the cook set point is reached.

Change Clean Temp

275°F is the factory default temp for the CLEAN cycle. To change the CLEAN cycle temp, simultaneously hold down the TEMP and CLEAN buttons for 15 seconds. The current temp setting will display on the right digital display only. Using the up or down arrows to adjust to the desired temp.

PREVENTATIVE MAINTENANCE

This number can be found on the serial plate located on the rear of the machine.

Proluxe machines are relatively maintenance free. For a long lifespan, the following preventative maintenance should be followed:

Daily Care:

1. Platens: Turn your machine off and allow to cool down before attempting to clean. These platens should only be cleaned with mild soap and warm water then wiped off with a clean, soft cloth or soft sponge.

2. Exterior surfaces: Wipe daily with mild soap and warm water.

DO NOT use ice or cold water to cool the unit down. This can cause platens to warp.

Service Problems:

Contact our factory at (800) 624-6717 (U.S. only) or approved service agency. When contacting the factory for information, parts or service instructions, please provide the serial number of the machine be provided.

Vantage SL Troubleshoot Guide - Model #: SL1577

Problem	Cause	Action	Ref #
Power button on digital controller face is depressed but doesn't turn on.	1. Power cord is not plugged in.	1. Plug the power cord into wall receptacle and power button.	----
	2. Circuit breaker is tripped off in the site's breaker box.	2. Reset circuit breaker that the grill is plugged into. Depress Power Button to turn on.	-----
	3. Transformer has taken an electrical surge and is damaged.	3. Replace Transformer after you check secondary side of transformer. If working properly, you should receive 12vdc.	18
	4. Check voltage on the secondary side of the Transformer. If you read 12VDC then you are receiving voltage to the controller.	4. Replace controller. Controller should be on once the power button is depressed.	A8
	5. Possible blown fuse.	5. Replace fuse.	98
Digital controller's LED's are scrambled or randomly erratic. If when turning on, the display will first go to segment check	1. Possibly a component on the Digital controller is damaged.	1. Replace digital controller.	A8
	2. Control needs to reset.	2. While unit is on unplug unit, wait for 1 min. Then plug machine on again and depress the power button.	----
Digital controller is constantly beeping. No heat on either on left, right, upper, or lower platen.	Sensor in one of two zones lost it's continuity. Depress TEMP. While depressing TEMP depress either up or down arrow to locate error message PROB (zone 1, lower platen, zone 2 left upper platen, zone 3, right upper platen.) If occurred when depressing the up arrow indicates either the left or right platen has the open sensor or Probe.	Disconnect probe and check for continuity (by using Ohm Meter) and replace. Do not cut and splice new sensor. Install new 2000 ohm RTD sensor to underside of the platen and reconnect to controller. Upper left and right sensor for replacement on upper platens, lower platen sensor for replacement for lower platen.	22 46
Digital display shows PROB. No heat on any platen.	Sensor lost it's continuity as shown on a multi-meter.	Disconnect prob that is open (no continuity as shown on a multi-meter. Must replace sensor (RTD). Do not cut and splice new sensor. Install new 2000 ohm RTD sensor to under side of heat	41

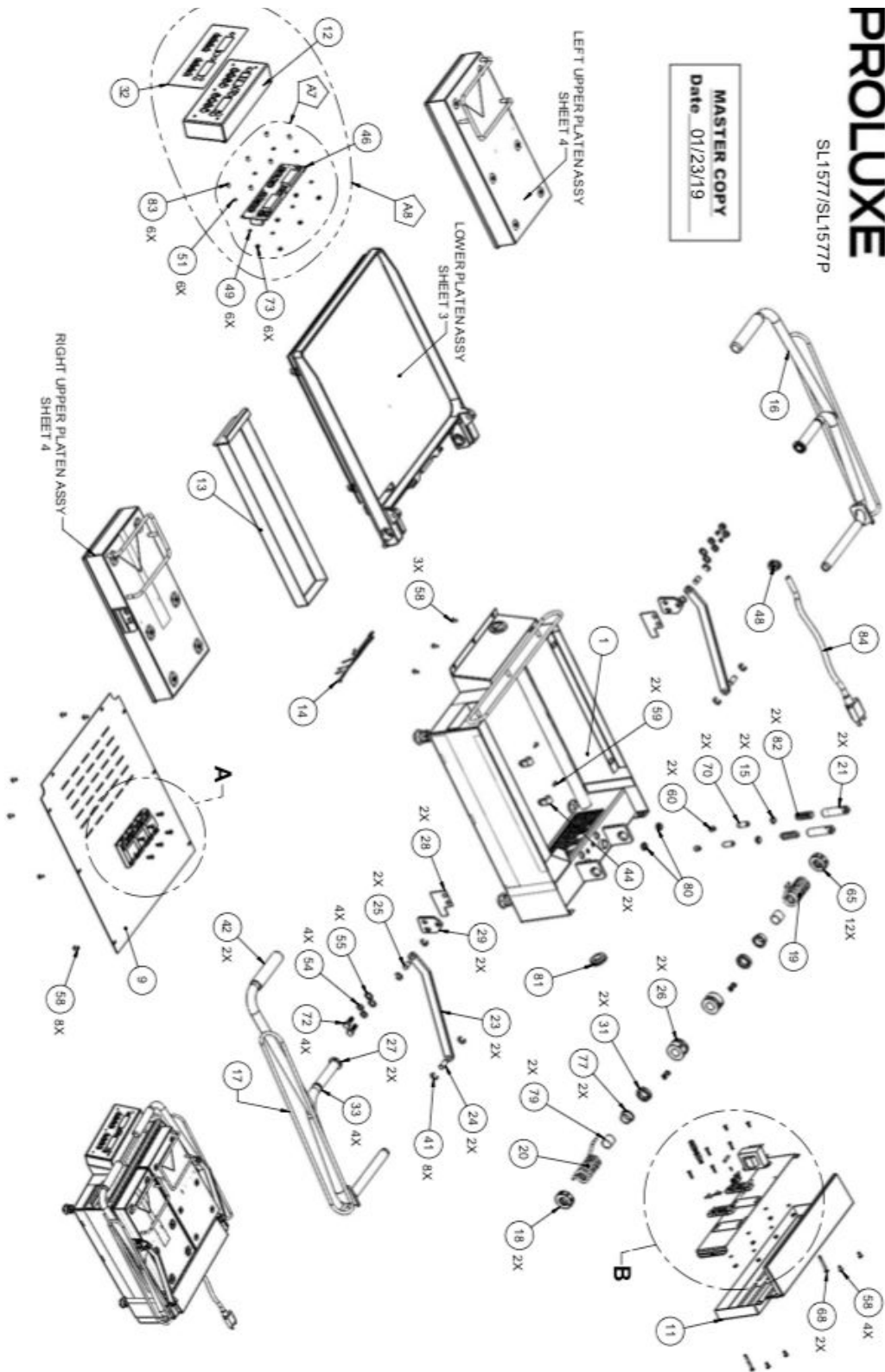
		platen and reconnect to the controller.	
Digital controller beeping and is overheating.	The mechanical relay on the switched side is not opening to regulate temperature. Hold TEMP button then depress either the down or up arrow (zone 1, lower platen, zone 2, left upper platen and zone 3, right upper platen.) RLY will display on problem zone indicating the damage.	Replace the mechanical relay.	15
Either platen is not heating but the digital controller is on and appears to be functioning.	If the mechanical relay(s) on the coil side are receiving 12vdc indicates the controller is functioning properly. If there is no voltage on the switching side of the relay to the heaters, the relay is not working properly.	Replace the mechanical relay.	15
Beeper is not functioning.	Beeper has failed.	Replace control board.	A8
One of the three heater platens not close to set point.	The offset function in the controller's setting needs to be adjusted to achieve proper shade of toast.	Call (800) 624-6717 for instructions.	----
One heating zone is not reaching setpoint and another heater is overheating.	Sensors maybe crossed.	Make sure each sensor is connected to its prospective position on the terminal block and back to the controller.	----
Setpoint is reached but slightly off in temperature.	Offset may need to be calibrated and adjusted.	Call (800) 624-6717 for instructions.	----
Heater platen is overheating.	<ol style="list-style-type: none"> 1. The mechanical Relay may be stuck in the closed position (zone 1, lower platen #1 labeled on this relay, zone 2, left upper and zone 3, right upper). 2. If you are receiving 12vdc on the coil of the relay, the controller is properly functioning. 	Use an Ohm meter for a continuity check must check at the cold pins of the heater (where the heater wire is brazed at the cold pin. This will eliminate any other failure before the heater element validating the loss off continuity at the source the heater element.	15
Upper heater not coming down parallel to the lower platen.	Parallel lever not attached either in the rear out on the upper heater platen. Check to see if parallel lever	Reconnect the pin and the retaining E-Clip.	25

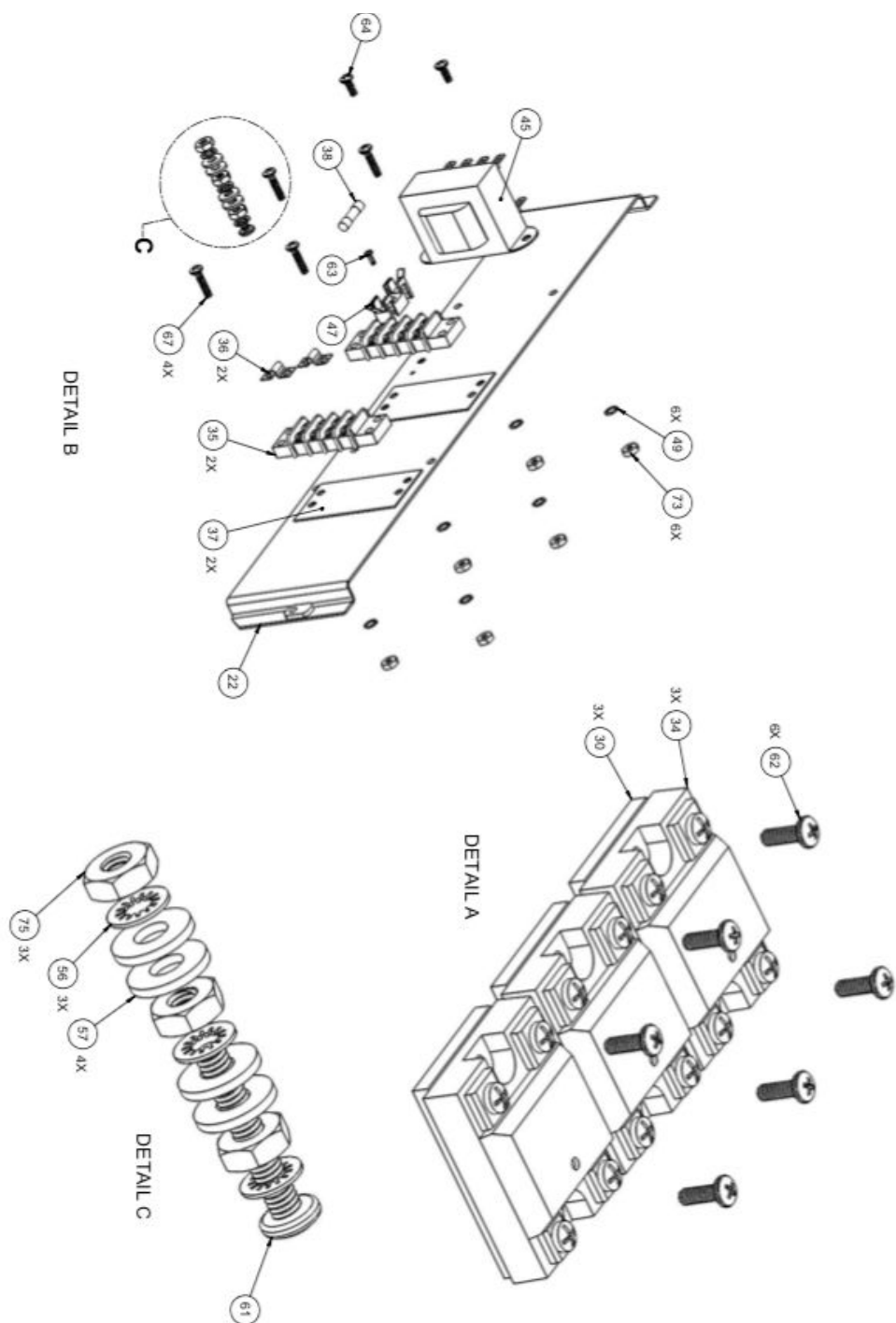
	is connected on both sides. The retaining clip attached to pin may have come off.		
Upper platen falling down or lost tension.	The springs have lost some tension.	Remove rear panel and adjust the retaining collars on shaft by winding the spring tighter. There are multiple set screws that need to be loosened in order to wind the spring tighter. Once proper tension is achieved, tighten all set screws to prevent tension loss.	----

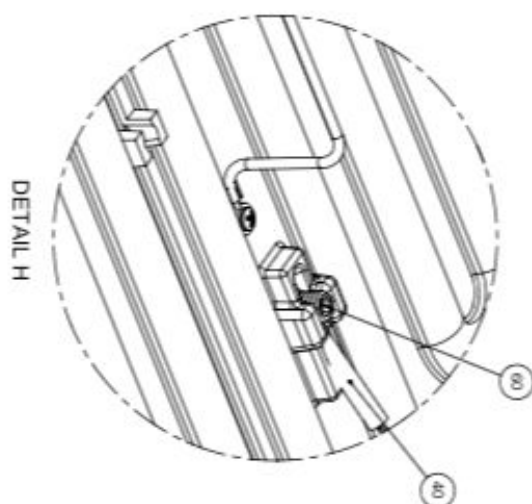
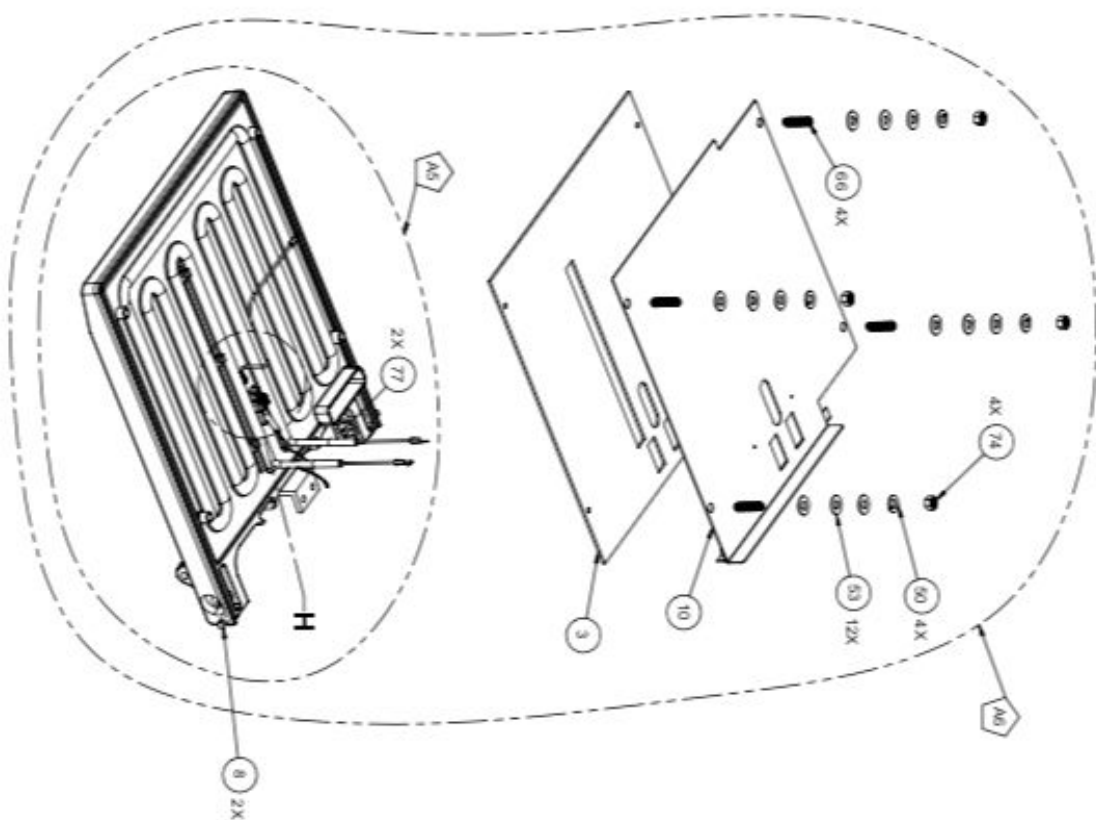
PROLUXE

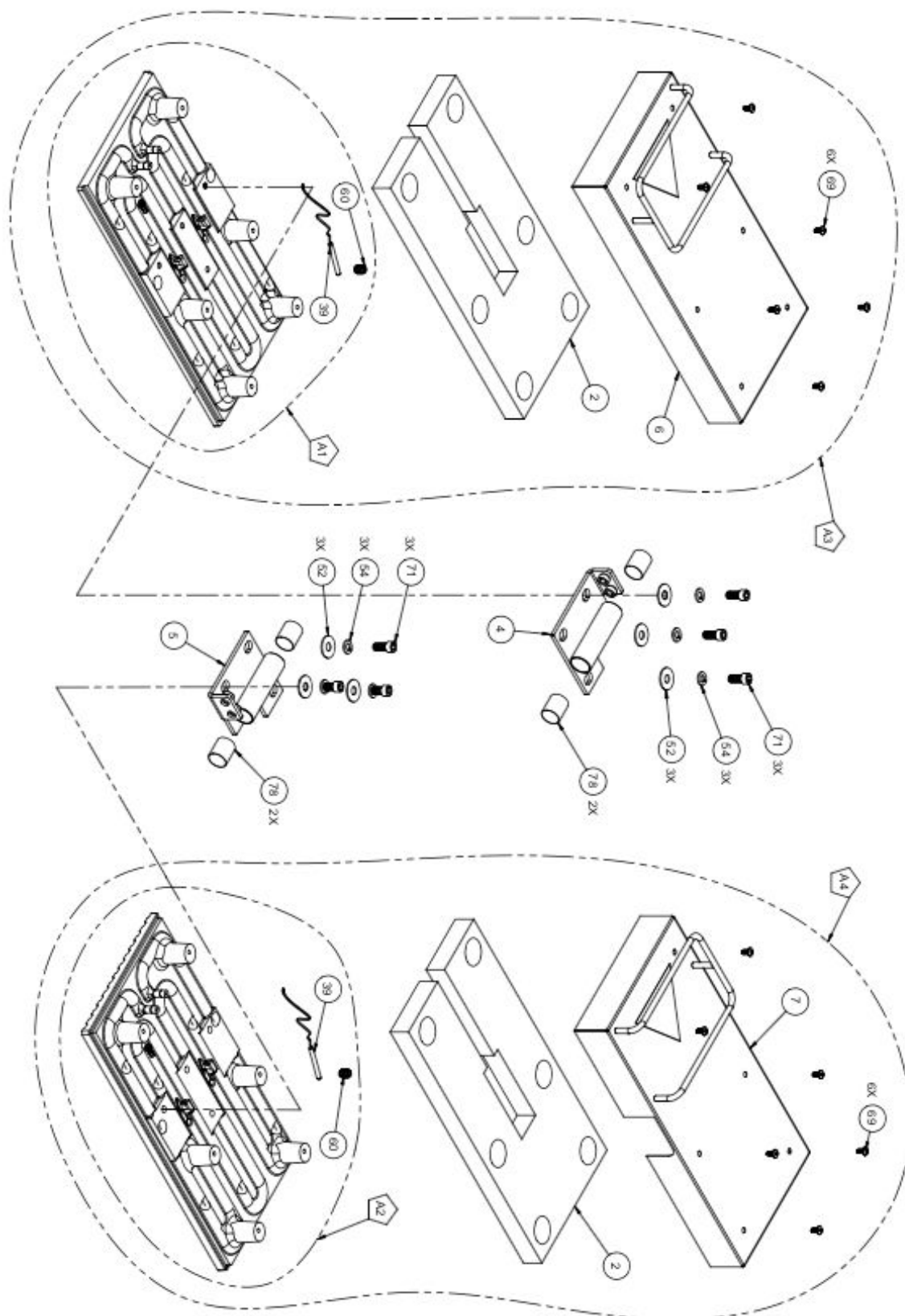
SL1577/SL1577P

MASTER COPY
Date 01/23/19









PROLUXE
SL1577 WIRE DIAGRAM
SL1577P



Vantage SL Part List - Model #: SL1577

ITEM #	DESCRIPTION	SL1577A ~120V	SL1577CEC ~220V	SL1577E ~208V	SL1577PA ~120V	SL1577PCEC ~220V	SL1577PE ~208V	QTY.
1	LOWER WRAP AROUND SHROUD ASSEMBLY	110115501	110115501	110115501	110115501	110115501	110115501	1
2	INSULATION,UPPER 7" X 15" LEFT AND RIGHT	110888251	110888251	110888251	110888251	110888251	110888251	2
3	LOWER PLATEN INSULATION	110115542	110115542	110115542	110115542	110115542	110115542	1
4	CLEVIS ASSY LEFT HAND	110115503	110115503	110115503	110115503	110115503	110115503	1
5	CLEVIS ASSY RIGHT HAND	110115504	110115504	110115504	110115504	110115504	110115504	1
6	SHROUD, LEFT ASSY	1101654645 4	1101654645 4	1101654645 4	1101654645 4	1101654645 4	1101654645 4	1
7	SHROUD, RIGHT ASSY	1101654645 5	1101654645 5	1101654645 5	1101654645 5	1101654645 5	1101654645 5	1
8	STOP, HEX PIN	1101834403 7	1101834403 7	1101834403 7	1101834403 7	1101834403 7	1101834403 7	2
9	COVER, BOTTOM ASSY	110115570	110115570	110115570	110115570	110115570	110115570	1
10	COVER, LOWER PLATEN INSULATION	110115506	110115506	110115506	110115506	110115506	110115506	1
11	COVER, BACK	110115562	110115562	110115562	110115562	110115562	110115562	1
12	INSTRUMENT HOUSING ASSEMBLY	110115511	110115511	110115511	110115511	110115511	110115511	1
13	GREASE TRAY ASSEMBLY	110115505	110115505	110115505	110115505	110115505	110115505	1
14	WIRE HARNESS SL1577	1101102050	1101102050	1101102050	1101102050	1101102050	1101102050	1
ITEM #	DESCRIPTION	SL1577A ~120V	SL1577CEC ~220V	SL1577E ~208V	SL1577PA ~120V	SL1577PCEC ~220V	SL1577PE ~208V	QTY.
15	TUBING-PAD	110115531	110115531	110115531	110115531	110115531	110115531	2
16	HANDLE LEFT ASSEMBLY	110115522	110115522	110115522	110115522	110115522	110115522	1
17	HANDLE RIGHT ASSEMBLY	110115521	110115521	110115521	110115521	110115521	110115521	1
18	HANDLE SPRING ADJUSTING COLLAR	110115528	110115528	110115528	110115528	110115528	110115528	2
19	SPRING TORSION LH	1101023154 L	1101023154 L	1101023154 L	1101023154 L	1101023154 L	1101023154 L	1
20	SPRING, TORSION RH	1101023154 R	1101023154 R	1101023154 R	1101023154 R	1101023154 R	1101023154 R	1
21	PLUNGER ASSEMBLY	110115544	110115544	110115544	110115544	110115544	110115544	2
22	MOUNTING BRACKET ASSY.	110115559	110115559	110115559	110115559	110115559	110115559	1
23	TOP LINK	110115508	110115508	110115508	110115508	110115508	110115508	2

24	PIN, PIVOT BACK	1101708886 6	1101708886 6	1101708886 6	1101708886 6	1101708886 6	1101708886 6	2
25	PIN, PIVOT FRONT	1101708886 5	1101708886 5	1101708886 5	1101708886 5	1101708886 5	1101708886 5	2
26	HANDLE-HOLDER	110115530	110115530	110115530	110115530	110115530	110115530	2
27	SHIM, CLEVIS	11060421	11060421	11060421	11060421	11060421	11060421	2
28	UPPER LEVELING SHIM	110115557	110115557	110115557	110115557	110115557	110115557	2
29	UPPER LEVELING BRACKET	110115510	110115510	110115510	110115510	110115510	110115510	2
30	SINK, HEAT, ALUMINUM (SSR)	11057322	11057322	11057322	11057322	11057322	11057322	3
31	SPACER, HANDLE BUSHING RETAINER	11013283	11013283	11013283	11013283	11013283	11013283	2
32	OVERLAY	OSL1577B	OSL1577B	OSL1577B	OSL1577B	OSL1577B	OSL1577B	1
33	LOW CLEARENCE CLIP	LCC3478	LCC3478	LCC3478	LCC3478	LCC3478	LCC3478	4
34	SOLID STATE RELAY, 25 AMPS	PL2425	PL2425	PL2425	PL2425	PL2425	PL2425	3
35	TERMINAL BLOCK #4, DOUBLE	6014	6014	6014	6014	6014	6014	2
36	JUMPER, TERMINAL	J601	J601	J601	J601	J601	J601	2
37	MARKER STRIP #4 DOUBLE	MS6014	MS6014	MS6014	MS6014	MS6014	MS6014	2
38	FUSE BUSS 1 AMP	MPPF701R	MPPF701R	MPPF701R	MPPF701R	MPPF701R	MPPF701R	1
39	RTD TOP SENSOR 45.5"	1108881101	1108881101	1108881101	1108881101	1108881101	1108881101	2
40	2000 OHM RTD, BOTTOM SENSOR	1108881102	1108881102	1108881102	1108881102	1108881102	1108881102	1
41	RETAINING RING	1101708886 7	1101708886 7	1101708886 7	1101708886 7	1101708886 7	1101708886 7	8
ITEM #	DESCRIPTION	SL1577A ~120V	SL1577CEC ~220V	SL1577E ~208V	SL1577PA ~120V	SL1577PCEC ~220V	SL1577PE ~208V	QTY.
42	HANDLE GRIP	110901168	110901168	110901168	110901168	110901168	110901168	2
43	TRANSFORMER INSULATION	1101159180	1101159180	1101159180	1101159180	1101159180	1101159180	1
44	CLAMP, CABLE 3/8	CC38	CC38	CC38	CC38	CC38	CC38	2
45	TRANSFORMER	11096975	11096975	11096975	11096975	11096975	11096975	1
46	DIGITAL CONTROL 3 ZONE SOFTWARE REV 5.54	1101041052	1101041052	1101041052	1101041052	1101041052	1101041052	1
47	FUSE HOLDER 1 AMP	MPPF708	MPPF708	MPPF708	MPPF708	MPPF708	MPPF708	1
48	STRAIN RELIEF	1106546468	1106546468	1106546468	1106546468	1106546468	1106546468	1
49	WASHER, INTERNAL TOOTH LOCK #6	WLIT6	WLIT6	WLIT6	WLIT6	WLIT6	WLIT6	12
50	WASHER, LOCK 3/8	WL38	WL38	WL38	WL38	WL38	WL38	4

51	WASHER, .311 OD X .150 ID X .20 THK	311150019	311150019	311150019	311150019	311150019	311150019	6
52	WASHER, CUT 5/16	WC516	WC516	WC516	WC516	WC516	WC516	6
53	WASHER, SAE 3/8"	WSAE38	WSAE38	WSAE38	WSAE38	WSAE38	WSAE38	12
54	WASHER, 5/16" SPLIT LOCK	WL516	WL516	WL516	WL516	WL516	WL516	10
55	WASHER, LOCK INTERNAL TOOTH 5/16"	WLIT516	WLIT516	WLIT516	WLIT516	WLIT516	WLIT516	4
56	WASHER, INTERNAL TOOTH LOCK #8	WLIT8	WLIT8	WLIT8	WLIT8	WLIT8	WLIT8	3
57	WASHER, SAE #8	WSAE8	WSAE8	WSAE8	WSAE8	WSAE8	WSAE8	4
58	SCREW, PAN HEAD PHILLIPS 8-32 X 3/8 SS	SP83238S	SP83238S	SP83238S	SP83238S	SP83238S	SP83238S	15
59	SCREW, PHILLIPS PAN HEAD 8-32 X 3/8	SP83238	SP83238	SP83238	SP83238	SP83238	SP83238	2
60	SCREW, SET 3/8-16 X 1/2	SST381612	SST381612	SST381612	SST381612	SST381612	SST381612	5
61	SCREW, PAN HEAD 8-32 X 1	SP8321	SP8321	SP8321	SP8321	SP8321	SP8321	1
62	SCREW, PAN HEAD PHILLIPS 8-32 X 1/2	SP83212	SP83212	SP83212	SP83212	SP83212	SP83212	6
63	SCREW, PHILLIPS PAN 2-56x1/4	SP25614	SP25614	SP25614	SP25614	SP25614	SP25614	1
64	SCREW, PAN HEAD PHILLIPS 6-32 X 3/8	SP63238	SP63238	SP63238	SP63238	SP63238	SP63238	2
65	SCREW, SET KNURLED CUP POINT 5/16-18X3/8	SST5161838 KN	SST5161838 KN	SST5161838 KN	SST5161838 KN	SST5161838 KN	SST5161838 KN	12
66	SCREW, SET 3/8-16 X 1-1/2	SST3816112	SST3816112	SST3816112	SST3816112	SST3816112	SST3816112	4
ITEM #	DESCRIPTION	SL1577A ~120V	SL1577CEC ~220V	SL1577E ~208V	SL1577PA ~120V	SL1577PCEC ~220V	SL1577PE ~208V	QTY.
67	SCREW, PAN HEAD PHILLIPS 6-32 X 5/8	SP63258	SP63258	SP63258	SP63258	SP63258	SP63258	4
68	SCREW, PAN HEAD PHILLIPS 8-32 X 1-1/2 SS	SP832112S	SP832112S	SP832112S	SP832112S	SP832112S	SP832112S	2
69	SCREW, PAN HEAD PHILLIPS 10-24X3/8 STAINLESS STEEL	SP102438S	SP102438S	SP102438S	SP102438S	SP102438S	SP102438S	12
70	SCREW, SET 3/8-16 X 1"	SST38161	SST38161	SST38161	SST38161	SST38161	SST38161	2
71	BOLT, SOCKET HD 5/16-18X3/4"	SSH5161834	SSH5161834	SSH5161834	SSH5161834	SSH5161834	SSH5161834	6
72	BOLT, 5/16 -18 x 1 SS HEX HEAD	BH516181S	BH516181S	BH516181S	BH516181S	BH516181S	BH516181S	4
73	NUT, HEX 6-32	NH632	NH632	NH632	NH632	NH632	NH632	12
74	NUT, HEX 3/8-16	NH3816	NH3816	NH3816	NH3816	NH3816	NH3816	4
75	NUT, HEX 8-32	NH832	NH832	NH832	NH832	NH832	NH832	3

76	FEET, RUBBER 3/4	1101654646 9	1101654646 9	1101654646 9	1101654646 9	1101654646 9	1101654646 9	4
77	BUSHING, FLANGED TEFLON 3/4 ID X .875 OD X .5 L	110115563	110115563	110115563	110115563	110115563	110115563	4
78	BUSHING, TEFLON, 3/4" ID X 7/8" OD X 1" L	110115541	110115541	110115541	110115541	110115541	110115541	4
79	BUSHING TEFLON 3/4" ID X 7/8" OD X 3/4" L	110113441	110113441	110113441	110113441	110113441	110113441	2
80	RUBBER GROMMET, 5/16 I.D. x .500 O.D. x .100	110115554	110115554	110115554	110115554	110115554	110115554	2
81	GROMMET, RUBBER CS157, 3/4" ID 1.3/8" OD X 1/8	110103919	110103919	110103919	110103919	110103919	110103919	1
82	SPRING, DETENT	110115555	110115555	110115555	110115555	110115555	110115555	2
83	NYLON SPACER 1/4 X .141 X 9/32	11090109	11090109	11090109	11090109	11090109	11090109	6
84	POWER CORD	1101591174	MPPW202	1101009176	1101591174	MPPW202	1101009176	1
85	MANUAL SL1577	MSL1577	MSL1577	MSL1577	MSL1577	MSL1577	MSL1577	1
A1	UPPER PLATEN LEFT HAND WITH WIRING	1101155201	1101155202	1101155203	1101591201 L	1101155302 L	1101155303 L	1
A2	UPPER PLATEN RIGHT HAND WITH WIRING	1101155204	1101155205	1101155206	1101591204 R	1101155305 R	1101155306 R	1
A3	UPPER PLATEN LEFT HAND ASSY	1101155110	1101155111	1101155112	1101591110 L	1101155311 L	1101155312 L	1
A4	UPPER PLATEN RIGHT HAND ASSY	1101155113	1101155114	1101155115	1101591113 R	1101155314 R	1101155315 R	1
ITEM #	DESCRIPTION	SL1577A ~120V	SL1577CEC ~220V	SL1577E ~208V	SL1577PA ~120V	SL1577PCEC ~220V	SL1577PE ~208V	QTY.
A5	LOWER PLATEN WITH WIRING	1101008002 120K	1101008002 220K	1101008002 208K	1101155232 120K	1101155232 220K	1101155232 208K	1
A6	LOWER PLATEN ASSY	1101008002 120AK	1101008002 220AK	1101008002 208AK	1101155232 120AK	1101155232 220AK	1101155232 208AK	1
A7	CONTROLLER TEMPERATURE WITH INSTRUCTIONS	1101041052 K	1101041052 K	1101041052 K	1101041052 K	1101041052 K	1101041052 K	1
A8	CONTROLLER TEMPERATURE ASSY	110104152K	110104152K	110104152K	110104152K	110104152K	110104152K	1

Warranty & Return Policy

Proluxe warrants all products manufactured by it against defects in workmanship or materials from the date of purchase for a period of 1 year on parts and labor. This warranty applies to only equipment purchased and used in the United States.

Warranty period shall begin when equipment ships. Warranty travel will only be covered for 60 miles.

ALL WARRANTY SERVICE CALLS MUST BE APPROVED BY PROLUXE. IF THIS PROCEDURE IS NOT FOLLOWED, WARRANTY SERVICE WILL NOT BE COVERED. WARRANTY SERVICE WILL BE PAID ON STRAIGHT TIME, OVERTIME WILL NOT BE COVERED.

Service Calls

Contact our factory to obtain warranty service. Proluxe must issue a return authorization number, and call tag, or find the name and location of a Factory Authorized Service Center nearest you. When calling for service, please furnish the model number, serial number, and a description of the problem.

EXCLUSIONS

The warranties provided by Proluxe DO NOT apply to the following:

- Damage due to misuse, abuse, alteration, or accident.
- Improper or unauthorized repairs.
- Submerged in water.

- Damaged in shipment.
- Equipment exported to foreign countries.

Special Order Equipment and Accessories

Cannot be canceled and are not returnable unless defective within the terms of this warranty.

In no event shall Proluxe be liable for consequential damages arising out of the failure of any of its products if operated improperly or caused by normal wear or damaged by operator abuse.

Limited Lifetime Warranty on Heating Elements

If replacement is needed, Proluxe will send the new part at no charge but labor will not be covered unless the unit is still under the 1 year manufacturer warranty.

RETURNED MERCHANDISE POLICY

Should it become necessary to return any of the company's products, the following instructions must be adhered to: First, contact our customer service department for approval and a return authorization number. Please have the serial number of your item available at that time. All merchandise must be shipped freight prepaid by customer or service agency. Subject to the inspection of the product by the company, a restocking charge of 20% of the Net purchased price paid to Proluxe will be assessed.

Merchandise may not be returned for credit without prior written approval of Proluxe.

Collect shipments will not be accepted. No returns after 60 days of original shipment date on machines. Purchased parts may not be returned after 30 days. If upon inspection by Proluxe or its authorized agent it is determined the equipment has not been used in an appropriate manner, has been modified, or has not been properly maintained, or has been subject to misuse, misapplication, neglect, abuse, accident, unauthorized modification, damage during transit, delivery, fire, flood, act or war, riot or act of God, then this warranty shall be deemed null and void.

TERMS & CONDITIONS

1. Price List prices are suggested retail prices and are shown in U.S. Dollars.

2. Terms of Payment: 1% 10 days, NET 30 days.

3. New Accounts: Satisfactory credit information must be provided before open account status can be extended.

Unless agreed otherwise, all shipments will be made C.O.D., Cash in advance.

4. Pricing: Prices, specifications, model numbers, capacities and accessories are subject to change without notice.

5. Freight/Routing: Method of shipment will be determined by Proluxe unless otherwise advised by purchaser.

6. Damaged Claims: All merchandise shipped at purchaser's risk. Inspection must be made by purchaser at time goods are received. If goods are damaged, the PURCHASER shall request that the agent of the transportation company make a written notation on the proper shipping documents immediately and then file a claim for damages.

Note: Goods damaged in shipping are non-returnable.

7. Returns: Machines may not be returned after 60 days. Purchased parts may not be returned after 30 days. A restocking fee of 20% will be assessed on non-warranty returns.

8. Taxes: Prices indicated herein DO NOT include State, Federal, Local or foreign taxes or duties, nor do they include fees, permits, insurance or other levies, all of which are the responsibility of the purchaser.

9. All orders are subject to acceptance by Proluxe.

10. Possession of this price list shall not be considered an offer to sell