

Dulux®

PRECISION®

SURFACE PREPARATION

COATINGS REMOVER

Dulux PRECISION Coatings Remover is a biodegradable and water based product which is designed to remove multiple layers of architectural and industrial coatings from interior/ exterior surfaces. It is safer to use than traditional mechanical coatings removal systems, as it is designed to trap aged coatings in a wet state, preventing airborne dust particles.

Suitable for:

✓ Timber ✓ Brick ✓ Metal ✓ Concrete ✓ Stone ✓ Set Plaster ✓ Painted Fibreglass

- Removes acrylics, texture and render coatings
- Safer to use than traditional coatings removal systems
- Does not damage the integrity of the substrate
- Removes multiple coats in most applications
- Suitable for removing marine/anti fouling coatings
- Suitable for vertical and inverted surfaces
- Dust free coating removal



WATER CLEAN UP



BIO-DEGRADABLE

Test Patch: Before you begin, always use a test patch kit on each type of coating/surface that is to be removed. This will determine product compatibility, yield, thickness and dwell time needed. Refer to test patch kit for further instructions.

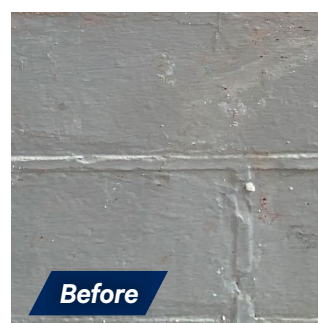
Application Conditions: For best results, surface temperatures should be 10–30°C and approximately 50% relative humidity. Product efficacy will be substantially reduced if applied outside of these conditions.

Coverage: Determined by use of the test patch kit on a job by job basis. Coverage rates will vary depending upon surface and application method. Be certain that all uneven or irregular surfaces receive adequate coverage. Ensure a thick film build is achieved in line with test patch validation process. See table overleaf for approximate coverage rates.

Dwell time: Dwell time allows the product to migrate into the coating system. The time required for softening/lifting coatings will vary according to the number of layers, type of coating being removed and surface temperature. Average dwell time ranges from 1–72 hours. Dwell time to be determined by use of the test patch kit on a job by job basis.



Product is coloured to aid application



DULUX® PRECISION® COATINGS REMOVER

APPLICATION

Take suitable safety precautions, including wearing appropriate PPE.

1. Apply the product to the coated surface evenly, paying attention to grooves and intricate surfaces. *Dulux PRECISION Coatings Remover* can be applied by brush, roller, trowel or spray. Please refer to chart below for minimum film build for each dwell time.
2. Cover the product with the special laminated paper, printed side facing out.
3. Use masking tape to tape down all sections and edges to create an air-tight seal, which allows the coatings remover to work at maximum efficiency.
4. Allow the paste to dwell on the coatings for 1–72 hours, depending on the number of coats and the type of coatings being removed. Dwell time to be determined by the test patch kit on a job-by-job basis.

REMOVAL

5. After the appropriate dwell time, gently scrape under the remover and *Dulux PRECISION* paper starting at the corner. Carefully lift the scraper, paper, coatings remover and paint in one continuous motion.
6. Once the coating has been removed, immediately scrub the surface with a stiff nylon brush or scouring pad, paying attention to crevices, grooves, and cracks.

CLEAN UP

7. Exterior stripped surfaces should be rinsed thoroughly with fresh water. Interior surfaces can be rinsed using a sponge and soapy water. Allow surface to dry thoroughly before repainting.
8. All water should be contained and filtered through geofabric or microfiltration membrane before being disposed in sewage waste or foliage.
9. Collect Coating Remover paste and paint residue on the packaging and dispose of in compliance with local council regulations.

LIMITATIONS

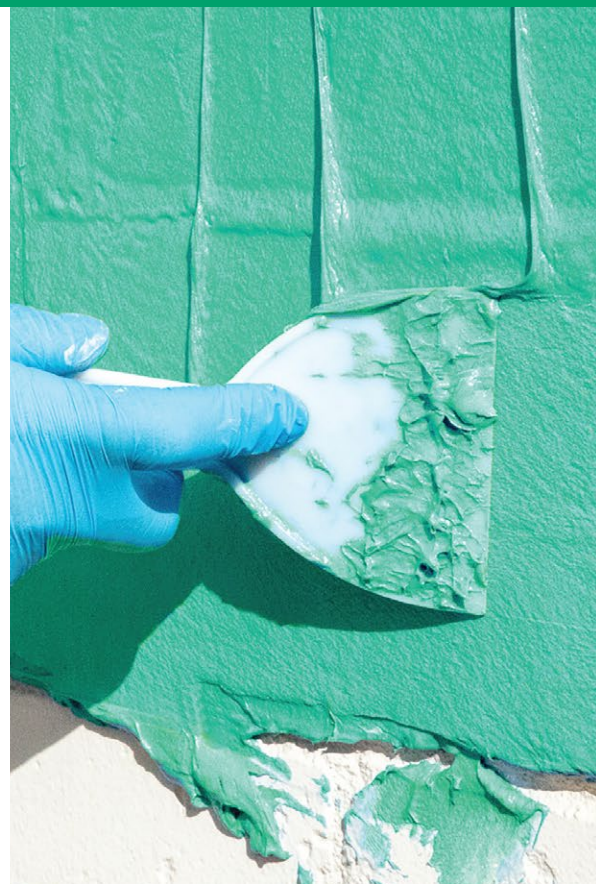
May not be suited to the removal of some epoxies, some lead based paints and primers as well as some high performance coatings.

Do not use the *Dulux PRECISION* Coatings Remover range on plastics, vinyl, acrylic sheeting, plasterboard, composite decking, EIFS, MDF, particle board, laminates, veneers and rubber. These surfaces will suffer from irreversible swelling or destruction of the substrate surface if exposed to any of the Precision Coating remover range.

Note: *Dulux PRECISION Coatings Remover* is formulated to remain wet up to 24 hours without paper with a minimum film build of 2mm. For all dwell times exceeding 24 hours, paper is necessary and often required for commercial and industrial projects. Dulux Laminated paper may be purchased separately when needed in rolls or sheets.

In most situations the coatings can be removed in a single application but there will be projects where coating chemistry and film build contribute to a second application for complete removal. That second application generally involves less product and shorter dwell interval.

Dwell* (hrs)	Build (mm) minimum	Approximate litres/m ² **
12 hrs	1.5	1.5L
24 hrs	2	2L
48 hrs	2.5	2.5L
72 hrs	2.8	2.8L
96 hrs	3	3L



Product Application Tools



The product can be applied by brush, roller, spray* and trowel.



* For dwell times greater than 24 hours *Dulux PRECISION* Paper is recommended and should be used.

** Approximate litres/m² coverage is dependent on substrate, temperature and types of coatings being removed.

^ For airless application of this product, contact your trade rep for information on a suitable airless spray unit and instructions.

©Dulux and PRECISION are registered trademarks of DuluxGroup (Australia) Pty Ltd.