



**Dulux**<sup>®</sup>

# Commercial Solutions for Data Centres



**Dulux**<sup>®</sup>  
PROTECTIVE  
COATINGS



**Dulux**<sup>®</sup>  
POWDER  
COATINGS



FOSROC  
Licensed brand\*



**Dulux**<sup>®</sup>  
Acratex<sup>®</sup>



**Dulux**<sup>®</sup>  
Worth doing, worth Dulux.

# Our product range

## Dulux® Protective Coatings

Dulux Protective Coatings offers innovative coating solutions for the protection of new and existing buildings, infrastructure, facilities, plant and equipment. With an extensive product range and an experienced, customer-focused team, we deliver tailor-made solutions for specifiers, engineers, architects, facilities managers and applicators to ensure assets are effectively protected in demanding environments.

## Dulux® Powder Coatings

Dulux Powder Coatings delivers superior colour solutions with premium, warranty-grade powder coatings applied through a national network of Accredited Powder Coaters who meet strict international standards. Setting the benchmark for colour confidence and durability, our locally manufactured products support high-quality architectural and industrial applications, underpinned by a strong focus on sustainability and performance.

## Fosroc (Licensed brand\*)

Fosroc specialises in concrete protection and repair, waterproofing, industrial flooring and construction solutions for commercial, civil and infrastructure projects. Supported by a dedicated network of technical experts, distribution partners and specialist contractors, Fosroc works closely with customers to help "Future Proof" assets across Australia, New Zealand and the Pacific.

## Dulux® Acratex®

Dulux Acratex is a market-leading provider of high-performance façade and roof coating systems designed to preserve, protect and transform the built environment. With nearly 50 years of expertise and a comprehensive range of render, texture, membrane and architectural finishes, Acratex supports new construction and remediation projects across residential, multi-residential and commercial applications. Through system-based solutions and specialist support, we help deliver long-term durability, performance and visual impact across a wide range of building substrates.

## Dulux® Decorative

Dulux is Australia's most trusted paint brand, offering a market-leading portfolio of interior and exterior coatings, including Wash&Wear®, enviroO<sub>2</sub>™ and Weathershield®. Engineered for Australian conditions, Dulux's high-performance solutions are designed to deliver durability, finish consistency and long-term protection on commercial projects. Supported by a palette of more than 4,800 colours, Dulux enables confident colour selection alongside reliable, proven performance.

### Interior

#### Decorative Solutions



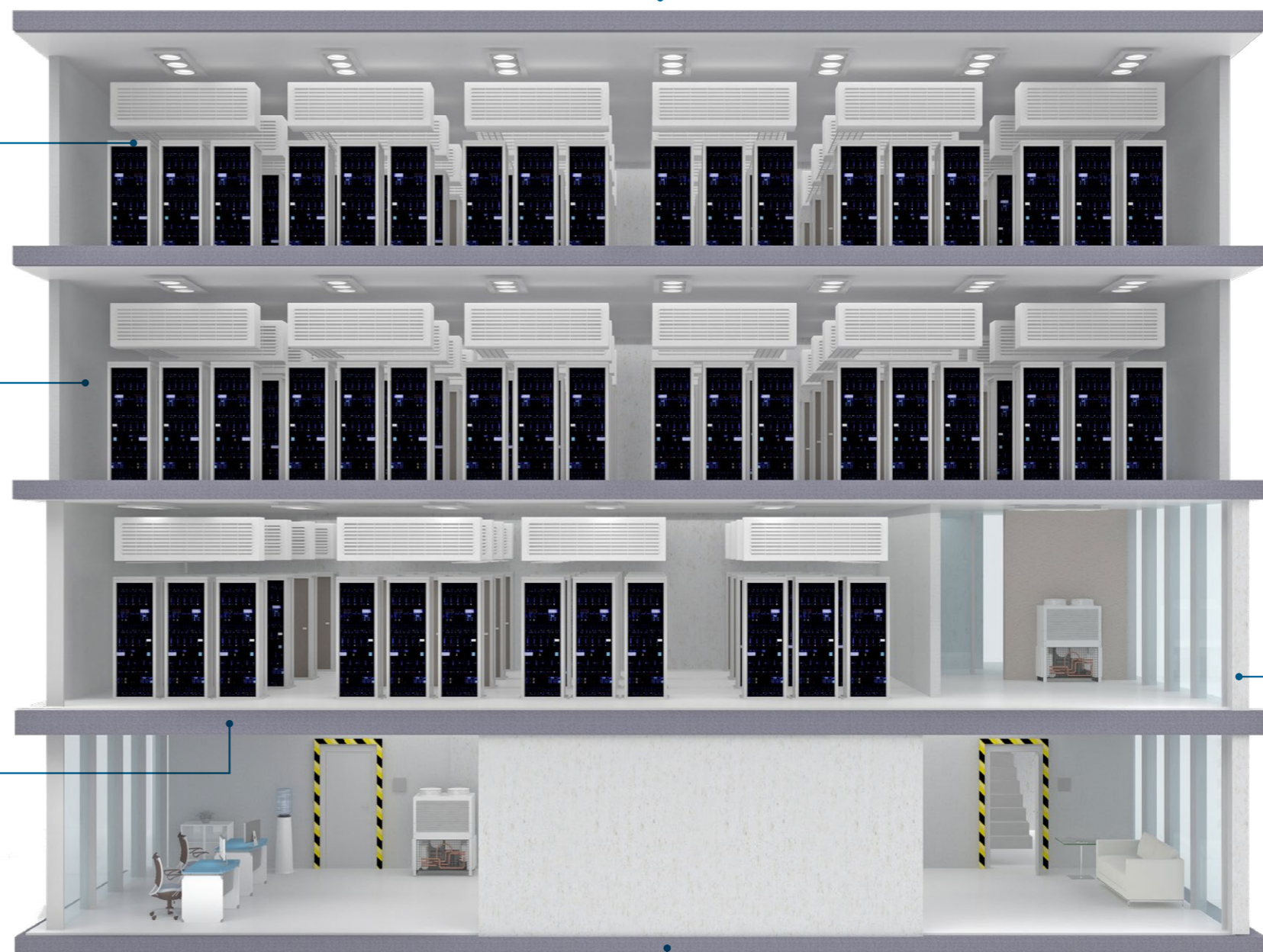
#### Internal Structure Solutions



#### Flooring Solutions



#### Below Ground Waterproofing Solutions



### Exterior

#### Roofing Solutions



#### External Surface Solutions



# Protective Coatings for Corrosion Management

Protective Coatings offers a comprehensive range of premium primers and topcoats designed to refurbish, protect, and decorate steel surfaces in demanding environments. Our solutions deliver robust corrosion resistance, long-term durability, and aesthetic appeal; ideal for data centres and critical infrastructure. Refer to the Protective Coatings Guide to AS2312.1:2014 for durability and system information.



## Primers



### Durepon® EZP

DUREPON® EZP is a two pack epoxy primer that is enhanced with zinc phosphate pigment for inhibitive corrosion protection on mild steel.

- Protects steel against corrosion
- Can be applied by brush, roller, conventional spray or airless spray
- Quickturn® hardener allows the product to be used during colder months



### Duremax® MBE

DUREMAX® MBE is a fast dry medium build general purpose epoxy primer. Specifically designed for application to blasted steel, it offers excellent barrier protection and is ideal for use in environments where fast drying or rapid recoating is required.

- Ideal for use in environments where fast drying or rapid recoating is required
- Compatible with a wide range of primers and topcoats



### Zincanode® 402

ZINCANODE® 402 is a two pack epoxy zinc rich primer formulated for cathodic corrosion resistance in harsh corrosive environments.

- Protects against corrosion
- Cold cure hardener allows application during colder months
- No need to mist coat – saves time

## Coatings



### Durezinc® i90

DUREZINC® i90 is a two part self curing inorganic zinc silicate formulated for heavy duty corrosion protection in the most aggressive industrial and marine environments.

- Compatible with a range of protective coatings for extended service life
- Good impact and abrasion resistance when fully cured



### Weathermax® HBR

WEATHERMAX® HBR has been locally developed for high build roller or brush application. It is a high build recoatable polyurethane coating used over a wide range of suitably primed substrates such as mild steel, galvanised steel, concrete and aluminium.

- High durability and low maintenance
- Easy brush and roll application in situ
- Easy to keep assets free of graffiti
- Maintains asset value



### Luxathane® SPX

LUXATHANE® SPX is a high performance two component acrylic polyurethane with a smooth, satin finish.

- Highly aesthetically pleasing finish is ideal for joinery
- Very good UV resistance is suitable for exterior applications



### Luxathane® HPX

LUXATHANE® HPX is a high performance, recoatable, high gloss polyurethane finish with very good UV resistance and gloss retention.

- Maintains asset value
- High durability and low maintenance

# Isocyanate Free

The Acrathane® range comprises three high gloss, isocyanate-free catalysed acrylic finishes for long term durability in both exterior and interior areas. The isocyanate-free formulation is particularly useful for on-site spray application. Acrathane® products are easily recoatable after minimal preparation.



## Acrathane® IF

SURFACESHIELD® HD (Heavy Duty) is a waterbased graffiti resistant treatment for the protection of vertical surfaces from graffiti and pollution ingress.

- Available in the full range of DULUX® Colour Specifier Colours and AS2700 colours
- Excellent graffiti resistance
- Smooth gloss finish

# Intumescent

The stability of a building depends on loadbearing structural steel. Steel loses its loadbearing capacity when its temperature rises above 550°C during a fire; therefore structural steel protection with intumescent coatings is required to preserve the stability of the building structure in the event of a fire.



### FIRETEX® 6010

FIRETEX® FX6010 is an ultra-fast drying methyl methacrylate intumescent coating for fire protection of interior and exterior structural steel.

- Offers fire protection across a range of environments
- Ultra-fast drying, less hold up onsite
- Designed for on-site and offsite application



### FIRETEX® Platinum-120

FIRETEX® PLATINUM-120 is a solventless, ultra-high build, epoxy intumescent coating for the fire protection of interior and exterior structural steel. It is rated to provide up to 120 minutes of cellulosic fire protection.

- Offers fire and corrosion protection across a range of environments
- Transportable from shop to site
- Fast drying, fast to process



### FIRETEX® Platinum

FIRETEX® PLATINUM is a solventless, ultra-high build, epoxy intumescent coating for the fire protection of interior and exterior structural steel. It is rated to provide up to 60 minutes of cellulosic fire protection.

- Offers fire and corrosion protection across a range of environments
- Transportable from shop to site
- Fast drying, fast to process

# Waterproofing

From deep ground to high above it, Fosroc® delivers a comprehensive range of waterproofing systems. Engineered for reliability and long-term performance, our range includes liquid membranes, sheet membranes, and waterstops designed to safeguard critical infrastructure above and below ground.



## Liquid Membranes

### Exterior Waterproofing Solutions



#### Polyurea WHE110

Polyurea WHE110 is a spray-applied, 100% solids, flexible, two-component, rapid curing hybrid Polyureapolyurethane system, designed as a waterproofing and protective coating. Nitoflor PA is used as topcoat for Polyurea WHE110 to form a complete system.

- Very low VOC
- Excellent chemical resistance, thermal stability and UV resistance (some discolouration will occur)
- Very fast turn-around time. The coated substrate can be put into service within an hour
- Excellent impact, abrasion and puncture resistance



#### Nitoproof 410

Nitoproof 410 is a water based, fast drying, flexible two component, polymer modified cementitious waterproofing membrane designed for under toppings, tiles and other protected environments. It may also be used for foot trafficable exposed roof top membranes and foot trafficable exposed balcony decks when overcoated with Nitoproof Top Coat UV.

- Low VOC
- Handles ponding and permanently wet conditions
- Tough and flexible with excellent elongation properties
- Compatible bonding properties for Nitotile Flex adhesive
- Suitable for internal and external applications
- Exhibits a high Shore A hardness



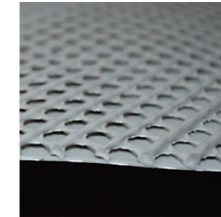
#### Nitoproof Top Coat UV

Nitoproof Top Coat UV is an acrylic hybrid hard wearing top coat designed for external applications on horizontal surfaces. Nitoproof Top Coat UV exhibits outstanding adhesion properties and excellent UV weather resistance.

- Highly durable and foot trafficable
- UV weather resistance
- Excellent ponding water resistance
- Resistant to fungi and algae growth
- Provides slip resistant surface, no sand casting or aggregate addition required
- Excellent weathering properties
- Low VOC
- Flexible (not elastomeric)

## Sheet Membranes

### Below Ground Waterproofing Solutions



#### Proofex Engage

Pre-applied waterproofing membrane which mechanically bonds to poured concrete.

- Unique mesh system bonds permanently to concrete, remaining in place even if settlement takes place
- Smart anti-tracking design prevents water tracking between membrane and concrete
- Simple and quick to install – no protection film to remove
- Basement waterproofing protection to grades 1, 2 and 3 as defined in BS 8102:2022
- Methane and CO2 protection as defined in BRE Report 212
- Radon protection as defined in BRE Report 211



#### Proofex 3100

Proofex 3100 is a self adhesive bituminous Sheet membranes incorporating a cross laminated HDPE film used for below ground/non-exposed waterproofing.

- Self adhesive – allows installation without the use of heating torches while providing a fully bonded membrane system
- Uniform thickness – eliminates any likelihood of thin application commonly found with liquid applied membranes
- Cross laminated High Density Polyethylene (HDPE) carrier film ensures dimensional stability whilst allowing adequate flexibility during installation and service
- Selvedge strip provides bitumen to bitumen seal at longitudinal joints ensuring watertight seal



#### Proofex Sheetdrain 81

Proofex Sheetdrain 81 is a high-density polyethylene (HDPE) dimpled drainage membrane used for the protection and drainage of waterproofing membranes used on foundations which are subsequently backfilled.

- Lightweight and easy to carry
- High drainage and filtering capacity
- Excellent separating layer
- Not damaged by chemical agents present in the soil
- Will not affect drinking water

## Waterstops



#### Hydrotite

Hydrotite is hydrophilic waterstop which expands in a controlled fashion in the presence of moisture to create a pressure seal within construction joints in concrete structures.

- Self-adhesive makes installation easier and reduces construction costs
- Co-extruded design means expansion is directed across the joint for maximum seal
- Delay coating to help prevent premature expansion
- Unaffected by repeated wet and dry cycles
- No site welding as is required for traditional PVC waterstops



#### Leakmaster

Leakmaster is a gun applied, water-swellable, waterstop paste for bonding Hydrotite profiles to rough concrete surfaces. It can also be used as a stand-alone water sealing non-movement joints of cast in-situ concrete.

- Easy application to smooth and uneven surfaces as a moisture-cure one component type water-swelling sealant
- Can support 20m heads of water
- Water swelling up to approx. 2 times in volume
- Provides excellent water sealing properties for construction joints
- Good adherence: before swelling It adheres to various materials such as concrete, metal, glass, etc



# Flooring

Transform your data centre with our advanced flooring systems, engineered for durability, safety, and effortless maintenance. Our range of epoxy and water-based coatings delivers robust protection and a polished finish, ensuring your facility stands up to heavy traffic and demanding operational environments.



## Epoxy Flooring



### Luxafloor® LGE

LUXAFLOOR® LGE is a high solids, semi-gloss epoxy floor coating with excellent durability and chemical resistance against a range of solvents.

- Easily transforms bare concrete floors
- Easy application by roller
- Choice of smooth or slip resistant finishes



### Luxafloor® HSG

LUXAFLOOR® HSG (High Solids Gloss) is a high gloss, two pack epoxy for coating concrete floors

- Ideal for interior areas subject to high wear
- Hard wearing



### Nitoflor FC150 HP/SL

Nitoflor FC150 HP/SL can be used as either a high build, 100% solids epoxy coating or as epoxy coating or as a self-levelling floor topping, producing a satin finish.

- Long lasting and easily maintained with good resistance to many industrial chemicals
- Slip resistance improves safety for plant and personnel
- Very low VOC
- APAS 0292 V3 – Class 1 Conformity
- Tested to AS/ISO 9239.1-2003 Reaction to Fire Tests for Flooring, and suitable for all classes of buildings with or without sprinklers, including fire-Isolated exits and fire control rooms
- Available in a range of light reflective colours and provides an attractive gloss finish



### Nitoflor PA

Nitoflor PA is a two-component solvent-free Nitoflor PA is a two component, 100% solids polyaspartic coating. Nitoflor PA is UV and abrasion resistant used as a top coat for resin floor systems or as a standalone coating over correctly prepared concrete surfaces.

- Very low VOC
- Tested to AS/ISO 9239.1-2003 Reaction to fire tests for flooring, and suitable for all classes of buildings with or without sprinklers, including fire-Isolated exits and fire Control rooms
- Pre-tinted
- UV resistant
- Chemical resistant
- Convenient 1:1 mix ratio (by volume)
- Fast cure

## Water Based Flooring



### Luxafloor® WB

LUXAFLOOR® WB is a low build, waterborne, two pack epoxy floor coating that provides a hardwearing gloss finish that is easy to clean.

- Gloss finish that is easy to clean
- Suitable for commercial car parks



### Luxafloor® ECO2

LUXAFLOOR® ECO2 is a low build, waterborne, two pack epoxy floor coating that provides a hardwearing surface.

- Can be used in projects where low VOC coatings are required.
- Ideal for projects where limited time is available for shut downs



## Warrantable powder coat finishes

The Dulux Powder Coatings range of premium finishes delivers guaranteed performance\* for data centres, ensuring every element – from external facades to interior components – is protected in the most demanding environments. Backed by product specific warranties when applied by a Dulux Accredited Powder Coater, our ranges provide the confidence of proven durability, long term performance and enduring aesthetic appeal.



### Fluoraset® Xtreme™

On-trend solid colours, delivered with warranty grade advanced ultra durable fluoropolymer thermosetting powder.

- Class leading performance
- 35yr Aluminium Durability warranty\*
- 30yr Aluminium Colour warranty\*
- Formulated to meet AS 3715 and AAMA 2605



### Fluoraset® Allure™

Beautiful pearlescent finishes, delivered with warranty grade advanced ultra durable fluoropolymer thermosetting powder.

- Class leading performance
- 35yr Aluminium Durability warranty\*
- 30yr Aluminium Colour warranty\*
- Formulated to meet AS 3715 and AAMA 2605



### Duratec® Zeus®

On-trend solid colours including popular COLORBOND® steel colours, delivered with warranty grade advanced super durable polyester thermosetting powder.

- Solid colour look
- 25yr Aluminium Durability warranty\*
- 20yr Aluminium Colour warranty\*
- Formulated to meet AS 3715 and AAMA 2604



### Electro®

Unique anodised look finishes, designed to subtly change in appearance as light conditions alter in the day, delivered with warranty grade advanced super durable polyester thermosetting powder.

- Anodised look
- 25yr Aluminium Durability warranty\*
- 15yr Aluminium Colour warranty\*
- Formulated to meet AS 3715 and AAMA 2604



### Charisma®

Contemporary, solid colours in a flat matt finish for a subtle and sophisticated look, delivered with warranty grade advanced super durable polyester thermosetting powder.

- Solid, flat matt look
- 25yr Aluminium Durability warranty\*
- 15yr Aluminium Colour warranty\*
- Formulated to meet AS 3715 and AAMA 2604



### Armourspray®

Solid, pearlescent and clear finishes with high chemical resistance allowing the removal of most forms of graffiti, delivered with warranty grade advanced highly durable polyurethane thermosetting powder.

- High chemical resistance
- 15yr Aluminium Durability warranty\*
- 15yr Aluminium Colour warranty\*
- Formulated to meet AS 3715 and exceed AAMA 2603



### Duratec® Elements2®

Distinctive, highly mar and scuff resistant textured finishes built to withstand the elements, delivered with warranty grade advanced super durable polyester thermosetting powder.

- High mar and scuff resistance
- 25yr Aluminium Durability warranty\*
- 20yr Aluminium Colour warranty\*
- Formulated to meet AS 3715 and AAMA 2604



### Duratec® Intensity®

Fun, bright colours that produce a vibrant impact, delivered with warranty grade advanced super durable polyester thermosetting powder.

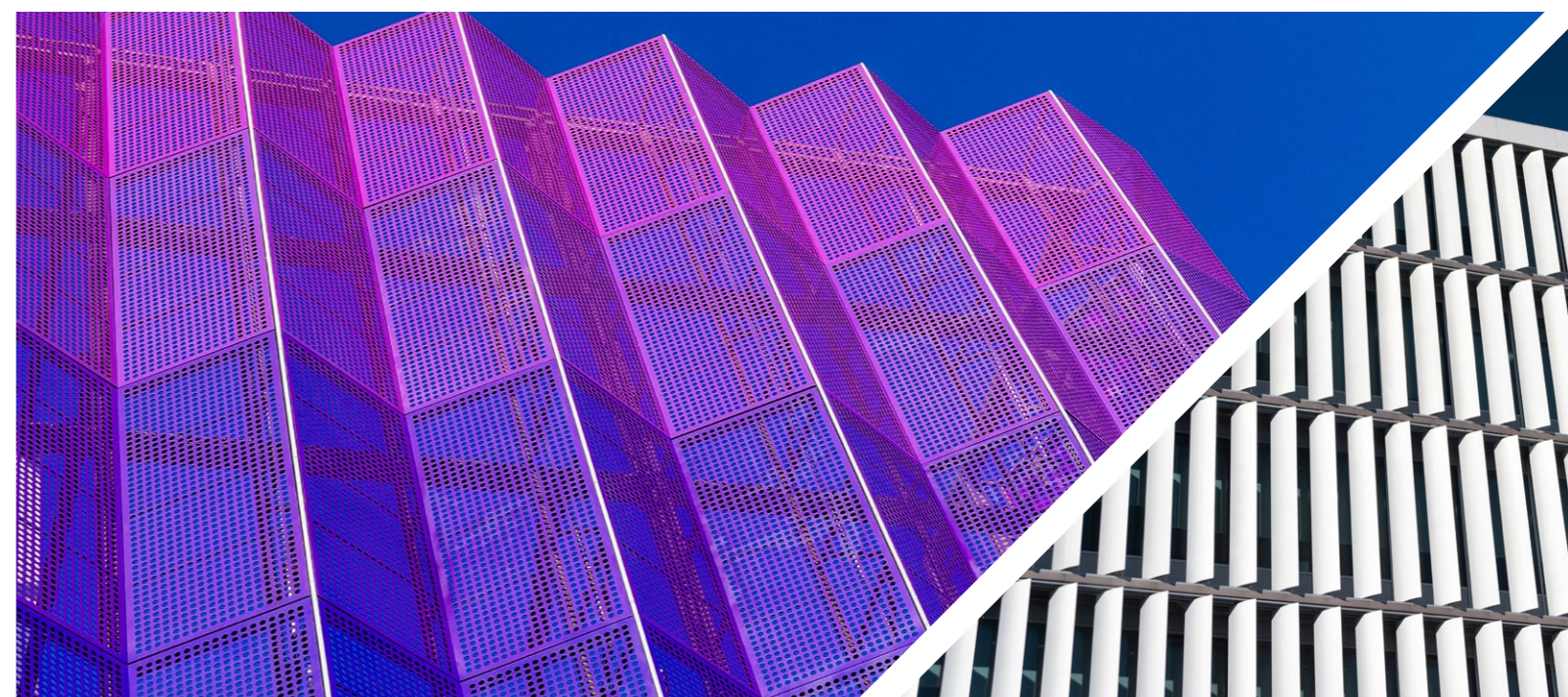
- Bright look
- 25yr Aluminium Durability warranty\*
- 15yr Aluminium Colour warranty\*
- Formulated to meet AS 3715 and AAMA 2604



### Duratec® Eternity®

Beautiful, decorative pearlescent and metallic finishes delivered with warranty grade advanced super durable polyester thermosetting powder.

- Pearlescent look
- 25yr Aluminium Durability warranty\*
- 20yr Aluminium Colour warranty\*
- Formulated to meet AS 3715 and AAMA 2604



\*Dulux Fluoraset, Duratec, Electro, Charisma and Armourspray products are supported by Dulux Alumi Shield™ and Dulux Steel Shield™ warranties when applied by a Dulux Accredited Powder Coater to the warranty specification on recommended project types and conditions and maintained within the Dulux recommended Care and Maintenance guidelines. For more information visit [duluxpowders.co.au/warranties](http://duluxpowders.co.au/warranties)

## Performance Membrane coatings for Roofing and Masonry Façades



Dulux Acratex delivers advanced roofing and facades coating systems, engineered to protect and extend the service life of data centres.



### Dulux Acratex Cool Roof Commercial White

Dulux Acratex Cool Roof Commercial White is designed to maximise solar reflectivity on long-run metal roofs, reducing surface temperatures and heat gain.

- Reflects up to 90% of the sun's total light energy
- Reduces heat absorption and improves thermal performance



### Dulux Acratex AcraGuard

Dulux Acratex AcraGuard is a self-priming topcoat formulated for masonry substrates like Fibre Cement Sheet, Off Form, Tilt-Up & Pre-cast Concrete. AcraGuard is simple to apply and has an extended wet edge to reduce the appearance of lap marks and picture framing.

- Helps resist pollution, chemical attack and dirt pick-up
- 10 year warranty against peeling, flaking or blistering with 2 coat application
- 70% thicker than standard exterior paint to accommodate small hairline crack movement of up to 0.28mm (3.5 x Dry Film Thickness)



### Dulux Acratex AcraShield® Matt & Low Gloss

AcraShield is a high build, elastomeric membrane coating that forms a finishing weatherproof barrier. With a paint-like appearance, its film builds are three-times thicker than standard decorative paint providing enhanced crack bridging performance and anti-carbonation protection.

- Protects against steel corrosion in reinforced concrete
- Crack bridging 6 times average film build
- Elastomeric membrane available in all Dulux colours
- Available in both Matt and Low Gloss finish

Visit [acratex.com.au](http://acratex.com.au)



## Interior Decorative Coatings



Dulux decorative interior paint range is engineered to meet the demanding requirements of data centre environments, where durability, consistency and long-term performance are critical. Designed for high-traffic and service-intensive spaces, these coatings provide a premium, washable finish across internal substrates.



### Dulux enviro<sub>2</sub>™

Dulux enviro<sub>2</sub>™ is a premium sustainable paint with very low Volatile Organic Compounds (VOCs), making it less harmful to our health and environment. It produces a washable, stain-resistant and hard-wearing finish.

- Very low VOC and low odour
- Washable & stain resistant
- Helps prevent mould growth
- Eco certified
- Complete Dulux enviro<sub>2</sub>™ interior system



### Dulux Wash&Wear® + PLUS Anti Scuff

Dulux Wash&Wear® +Plus Anti-Scuff is designed for high-traffic interiors. The hard-wearing surface formed by Wash&Wear's exclusive 101® Barrier Technology is strengthened with added Scuffshield Technology™ to create the ultimate resistance against scuffs and marks.

- Market leading washability
- Superior protection & scuff resistance
- Reduces depositing of unsightly dark marks
- Easy to wipe away scuffs and marks
- Low VOC
- Low Sheen finish





**Australia**  
13 23 77

**New Zealand**  
0800 800 424

[duluxprotectivecoatings.com.au](http://duluxprotectivecoatings.com.au)



**Australia**  
13 24 99

**New Zealand**  
0800 800 975

[duluxpowders.com.au](http://duluxpowders.com.au)



Licensed brand\*

**Australia**  
1800 812 864

**New Zealand**  
0800 657 156

[fosroc.com.au](http://fosroc.com.au)



**Australia**  
13 23 77

**New Zealand**  
0800 800 424

[acratex.com.au](http://acratex.com.au)



**Australia**  
13 23 77

**New Zealand**  
0800 800 424

[dulux.com.au/specifier](http://dulux.com.au/specifier)

\* The following are registered trade marks of DuluxGroup (Australia) Pty Ltd: Dulux, Acratex, Durepon, Duremax, Zincanode, Durezinc, enviro<sub>2</sub>, Weathermax Luxathane, Acrathane, Luxafloor, Electro, Charisma, Armourspray, Fluoraset, Duratec, Zeus, Elements2, Intensity, Eternity, AcraShield, Wash&Wear, Weathershield.

FIRETEX is a trademark of and manufactured by Sherwin-Williams Protective and Marine Coatings.

\* Fosroc, the Fosroc logo, Nitoproof, Proofex and Nitoflor are trademarks of Fosroc International Limited, used under licence. Parchem Construction Supplies Pty Ltd is a DuluxGroup business and is the licenced manufacturer and distributor of Fosroc products in Australia.

DuluxGroup (Australia) Pty Ltd (ABN 67 000 049 427)  
1956 Dandenong Road, Clayton, 3168, Australia

DuluxGroup (New Zealand) Pty Ltd (ABN 55 133 404 118)  
150 Hutt Park Road, Lower Hutt, 5010 New Zealand

Any advice, recommendation, information, assistance or service provided by Dulux Australia in relation to goods manufactured by it or their use and application is given in good faith and is believed by Dulux to be appropriate and reliable at the time of publication. However, any advice, recommendation, information, assistance or service provided by Dulux is provided without liability or responsibility PROVIDED THAT the foregoing shall not exclude, limit, restrict or modify the right entitlements and remedies conferred upon any person or the liabilities imposed upon Dulux by any condition or warranty implied by Commonwealth, State or Territory Act or ordinance void or prohibiting such exclusion limitation or modification. Products can be expected to perform as indicated in this sheet so long as applications and application procedures are as recommended. Specific advice should be sought from Dulux for application in highly corrosive areas and for large projects to ensure proper performance.