

CLEAR FINISH ON BARE CONCRETE

Here is your Dulux® Concrete & Paving Project Guide, before you start your project it is important to test your surface.

BEFORE YOU START, TAKE THE SURFACE TEST

- ❶ Pour at least 30mL of water on your surface ❷ Leave for 30 seconds ❸ Wipe off

NOTE

This test is only required for concrete surfaces.

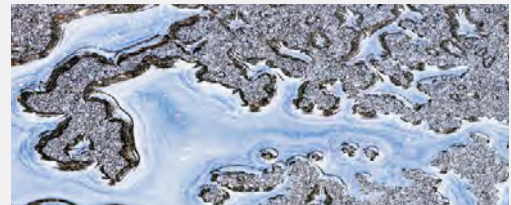
All other surfaces – check back of pack for suitability.

BARE CONCRETE SURFACE



If the water has soaked into the concrete surface it is BARE

SEALED SURFACE



If you can wipe all the water off the surface it is SEALED
Is your surface sealed? Return to the Project Planner and select the plan for a pre-painted or coated (sealed) surface.

STEP ONE: CLEAN



**BARE CONCRETE
ETCH & CLEAN**

STEP TWO: FINISH



**CLEAR PROTECTIVE
SEALER**



**ANTI-SLIP
ADDITIVE**

NOTE

Concrete & Paving Anti-Slip Additive is recommended to achieve a slip resistant finish in Clear Protective Sealer.

WE'RE HERE FOR YOU

Our expert help and advice team are available to help and guide you through your project. Live chat at dulux.co.nz to speak to one of our consultants or simply call 0800 800 424. We would love to see your projects so make sure to tag us @duluxnz when you share!

For inspiration or to view the complete range of available colours, scan the QR code:



To watch videos on how to prepare and coat your surfaces, scan the QR code:



To find a store near you, scan the QR code:

