

Dulux®

Worth doing, worth Dulux®

duramax®

SMALL PROJECTS

SPRAY PAINT COLOURS
& SPECIALTY EFFECTS



ACHIEVE THE PERFECT EFFECT FROM START TO FINISH

START

**Start your project with Dulux® Duramax®
Specialty Primers for a longer lasting result**

Plastic Primer

Ideal for priming
plastic furniture,
hard plastic cases,
downpipes and toys.

or

Metal Primer

Ideal for use on metal
fences, furniture,
doors and chairs.

or

Undercoat

Ideal for use on wood,
cardboard and brick.

FINISH

**Finish your project with a protective
and superior clear coating**

Gloss & Semi Gloss Clear Coats

Ideal for protecting art and craft work, including photographs
and can be used with all *Dulux Duramax* products except Brights,
Frosted Glass Effect and Magnetic Chalkboard.

IMPORTANT STEPS

Refer to icons referenced on each project page and follow the recommend steps to achieve a high quality finish.



SAND

Sand surface slightly with extra fine P400-P600 sandpaper so the paint better adheres and allows for a smoother finish.



WIPE

Wipe down the surface with a damp cloth so it is free from grease, rust and dirt. Ensure surface is totally dry before painting.
(Note: Oil from your hands will cause imperfections in the finished paint)



MASK

Mask off any areas that you don't want painted with good quality painters tape.



COVER

Use drop sheets or newspaper to cover surfaces and protect from overspray.



SHAKE

Shake can for at least three minutes after first rattle before use and regularly during use.



PRIME

Prime before painting to ensure superior adhesion of the paint to the surface. On porous materials the primer also assists in sealing the surface and giving a smoother finish.



PROTECT

For an ultra durable finish, coat with *Dulux Duramax Clear Coat Gloss* or *Semi Gloss*.



CLEAR

Prevent blocking of the nozzle by turning the can upside down and spraying until clear gas emerges, then wipe the front of the nozzle clean.



CLEAN

Clean up overspray while it is still wet with mineral turps.

For project tips, how-tos and inspiration, visit
www.dulux.co.nz/products/duramax



*Dulux Duramax
Black Satin*



*Dulux Duramax
Granite Light
Grey over Dulux
Duramax
Vivid White*



*Dulux Duramax
Bright Finish
Copper Rose*

CONTENTS

DECORATIVE



enamel 6



outdoor projects 8



stencils and spots 10



ombre effect 12

SPECIALTY



bright finish 14



marble effect 16



granite effect 18



metallic finish 20



diamond finish 22



frosted glass effect 24



magnetic chalkboard . . . 26



stainless steel finish 28



chalky finish 30

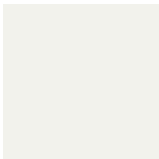


DECORATIVE ENAMEL

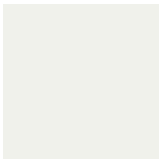
Create a unique living space by adding your personal touch to items around the home.

DESIGNER TIP

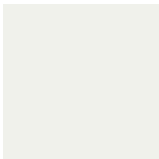
Transform ceramic ornaments, photo frames and small pieces of furniture with instant colour. Pick from bold Gloss colours to pair with black, white or grey.



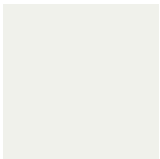
Vivid White™ Flat



Vivid White™ Satin



Vivid White™ Gloss



Appliance White
Satin



Tranquil Retreat
Gloss



Ito Gloss



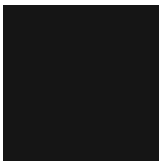
Black Flat



Black Satin



Black Gloss



Heat Black

Bring personality and character into your home with bold and playful colour.



Dandelion Yellow
Gloss



Bright Delight Gloss



Hot Lips Gloss



Licked Lick Gloss



Hyssop Gloss



Grass Court Gloss



Gogo Blue Gloss



True Blue Gloss



Passionate Blue Gloss



Dulux
Duramax
True Blue

Dulux
Duramax
Gogo Blue

Dulux
Duramax
Grass Court

Dulux
Duramax
Grass Court

DECORATIVE OUTDOOR PROJECTS

Dulux Duramax High Performance Enamel is durable enough to be used both inside and outside the home and is the perfect way to personalise your next DIY project.



WIPE



COVER



SHAKE



CLEAR



CLEAN



1. Before you start you will require the following items to complete the project:

- ✓ 1 can of Dulux Duramax High Performance Enamel in your desired colours
- ✓ Damp cloth
- ✓ Drop sheet or newspaper
- ✓ Lazy Susan



2. Lay rungs out on newspaper and spray with 2 coats of desired Dulux Duramax High Performance Enamel colours.

Spray 15 to 25cm from the surface, with smooth, even strokes parallel to the surface. Make sure the sides are dry before flipping them over to paint the back.



3. Place metal planters on newspaper and spray with 2 coats of desired Dulux Duramax High Performance Enamel colours and allow to dry before assembling planters with ladder.



FEATURED COLOURS:



Bright Delight Gloss



Gogo Blue Gloss



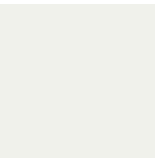
Tranquil Retreat Gloss



Dandelion Yellow Gloss



Hyssop Gloss



Appliance White Satin



Dulux
Duramax
Bright
Delight

Dulux
Duramax
Gogo Blue

Dulux
Duramax
Tranquil
Retreat

Dulux
Duramax
Appliance
White

Dulux
Duramax
Dandelion
Yellow

Dulux
Duramax
Hyssop

DECORATIVE STENCILS & SPOTS

Dulux Duramax High Performance Enamel is perfect for getting creative with stencils. Have some fun experimenting with the wide range of colours to achieve your own design.



WIPE



COVER



SHAKE



CLEAR



CLEAN

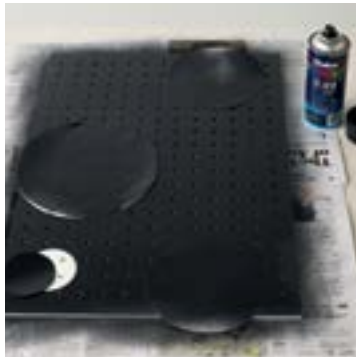


1. Before you start you will require the following items to complete the project:

- ✓ 1 can *Dulux Duramax* High Performance Enamel Black Satin
- ✓ 1 can *Dulux Duramax* High Performance Enamel Grass Court
- ✓ Box cutter
- ✓ Blu-Tack
- ✓ Cardboard or cereal boxes
- ✓ Damp cloth
- ✓ Drop sheet or newspaper
- ✓ Lazy Susan
- ✓ Round items to trace around

TIP

If your peg board is bare timber, lightly sand with P400-P600 sand paper, apply one coat of *Dulux Duramax* Undercoat followed by two coats of *Dulux Duramax* High Performance Enamel Vivid White Satin.



2. Cut out circles from old cereal boxes or suitable cardboard and stick onto surface with Blu-Tack.

Hold can upright 15 to 25cm from the surface. Spray 2 coats of *Dulux Duramax* High Performance Enamel Black Satin with smooth, even strokes parallel to the surface. Remove stencils after 20 minutes when dry.



3. Spray shelves and pegs with 2 coats of *Dulux Duramax* High Performance Enamel Grass Court.

To help achieve an even spray, slowly spin the lazy Susan to paint all sides. Turn shelves over after 20 minutes and paint other side.

FEATURED COLOURS:



Black Satin



Grass Court Gloss

Available in a range of decorative colours.

Dulux
Duramax
Black Satin



Dulux
Duramax
Grass Court

DECORATIVE OMBRE EFFECT



WIPE



COVER



SHAKE



CLEAR



CLEAN



1. Before you start you will require the following items to complete the project:

- ✓ 1 can of Dulux Duramax High Performance Enamel Tranquil retreat
- ✓ Damp cloth
- ✓ Drop sheet or newspaper
- ✓ Lazy Susan



2. Place item on lazy Susan. Whilst slowly spinning the basket on the lazy Susan, start spraying at approximately half of the way up the basket keeping your hand steady.

This should be a lighter coat to achieve the ombre effect.



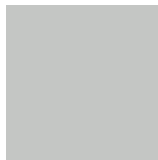
3. Using light even strokes and rotating the lazy Susan, fill in the area from your top line to the bottom of the basket.

Due to the texture of a basket, 2 to 3 coats are required to achieve an opaque finish. Remember to leave the top line as a light coat.

TIP

Place basket on a lazy Susan and rotate while keeping your spraying hand still to achieve an even line all around the basket.

FEATURED COLOURS:



Tranquil Retreat Gloss

Available in a range of decorative colours.



Dulux
Duramax
Tranquil
retreat



SPECIALTY BRIGHT FINISH

Bright Finish allows you to reproduce the look of precious metals with ease. Transform usually mundane items around the home into brilliant feature pieces.



- 1. Before you start you will require the following items to complete the project:**
- ✓ 1 can of Dulux Duramax Bright Finish of your desired colour
 - ✓ Damp cloth
 - ✓ Drop sheet or newspaper
 - ✓ Lazy Susan



- 2. Disassemble all frames, remove glass and lay frames out on newspaper or a drop sheet.**
- Due to the mirror finish of the bright colours, use a damp cloth to make sure the surface is clean and free from finger prints.




- 3. Spray with 2 light coats of Dulux Duramax Bright Finish while turning the lazy Susan to ensure you get an even coat on all sides of the frame.**
- Wait for 24 hours before reassembling the frames to allow the paint to harden. The frames need to be treated with care as Dulux Duramax Bright Finish is very sensitive to touch at all times. Avoid touching the sprayed surface to ensure you maintain your bright shine.

Note: Dulux Duramax Bright Finish cannot be overcoated with a clear coat.


TIP

Like all precious metals, all Dulux Duramax Bright Finishes can easily mark. To keep your finished items looking their best, ensure your hands are clean and free of grease and oil when you handle them.


AVAILABLE IN:



Chrome



Gold



Copper Rose



SPECIALTY MARBLE EFFECT

Marble Effect gives you a highly fashionable black or white marble look. This eye catching effect is easily applied to give new life to items around the home.



1. Before you start you will require the following items to complete the project:

- ✓ 1 can of Dulux Duramax Marble Effect White
- ✓ 1 can of Dulux Duramax High Performance Enamel Ito
- ✓ 1 can of Dulux Duramax Clear Coat Semi Gloss
- ✓ 1 roll of good quality painters tape
- ✓ Damp cloth
- ✓ Drop sheet or newspaper
- ✓ Lazy Susan



2. Mask the areas of your tray to stay unpainted with good quality painters tape. Some lacquered timber finishes will need to be primed with one coat of Dulux Duramax Undercoat. If you are unsure, it's best to prime with Dulux Duramax Undercoat to eliminate any adhesion issues.

Once undercoat is dry, apply 2 coats of Dulux Duramax High Performance Enamel Ito following instructions and dry times on the label.



3. To achieve a realistic marble look, Dulux Duramax Marble Effect should be applied with quick hand movements from multiple directions and 25cm or more from the tray. Every marble finish will be unique so don't think too hard about the pattern you are spraying.

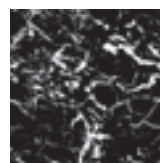
Once the tray has dried, remove tape and spray entire tray with Dulux Duramax Clear Coat Semi Gloss.

Note: Dulux Duramax Marble Effect must be used over Dulux Duramax colours including Metallics to achieve the effect. Not to be used over Dulux Duramax Bright Finish.

TIP

Dulux Duramax Marble Effect is applied similar to silly string. When painting your item, ensure you start the spray off the edge so that the spray is even before it hits your item.

AVAILABLE IN:



Marble Effect White over Black Gloss

Dulux
Duramax
White Marble
over Black
Gloss



SPECIALTY GRANITE EFFECT

Dulux Duramax Granite Effect is a textured paint designed to reflect the natural tones and texture of granite.



WIPE



COVER



SHAKE



CLEAR



CLEAN



1. Before you start you will require the following items to complete the project:

- ✓ 1 can of *Dulux Duramax Granite Effect Grey*
- ✓ 1 roll of good quality painters tape
- ✓ Damp cloth
- ✓ Drop sheet or newspaper
- ✓ Lazy Susan



2. Place the chord fittings connected to the light in a plastic bag and tape areas not to be painted with painters tape.

Place light with opening on the lazy Susan to prevent spray going in the opening.



3. Apply 2 coats of *Dulux Duramax Granite Effect Grey*.

Hold can upright 15 to 25cm from the surface. Spray with smooth, even strokes parallel to the surface. Apply light mist coats rather than one heavy one. To get an even textured finish, slowly spin the lazy Susan. Leave the first coat to dry for 1 hour before applying a second coat.

Use *Dulux Duramax Granite Effect* over different *Dulux Duramax* colours:

TIP

To achieve depth of colour, spray *Dulux Duramax Granite Effect* over a *Dulux Duramax High Performance Enamel* colour. We recommend 'Ito' to achieve a darker granite finish or 'Tranquil Retreat' for a lighter granite finish.

AVAILABLE IN:



Granite Effect
Grey over Ito Gloss



Granite Effect Light
Grey over Tranquil
Retreat Gloss



SPECIALTY

METALLIC FINISH

Dulux Duramax Metallic Finish brightens any space with its shimmering effect. Use all colours to achieve a bold look or be selective to compliment any colour scheme.



WIPE



COVER



SHAKE



CLEAR



CLEAN



1. Before you start you will require the following items to complete the project:

- ✓ 1 can of Dulux Duramax Undercoat
- ✓ 1 can of Dulux Duramax High Performance Enamel Vivid White Gloss
- ✓ 1 can of Dulux Duramax Metallic Finish in your desired colours
- ✓ 1 roll of good quality painters tape
- ✓ Damp cloth
- ✓ Drop sheet or newspaper
- ✓ Lazy Susan



2. Pull dolls apart and tape overlapping areas with good quality painters tape to eliminate dolls not fitting back together. Spread parts out on newspaper with openings facing down.

Apply 1 coat of Dulux Duramax Undercoat to both top and bottom of dolls followed by 1 coat of Dulux Duramax High Performance Enamel Vivid White Gloss on the bottom half of all dolls.



3. Spray the tops of each doll with 2 light coats of Dulux Duramax Metallic Finish while turning the lazy Susan to ensure you get an even coat on all sides.

Hold can upright 15 to 25cm from the surface. Spray with smooth, even strokes to avoid any drips.

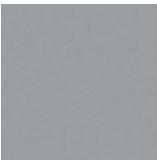
TIP

Place small items on an aerosol lid to raise them off the table or a lazy Susan so that you can paint right to the bottom.

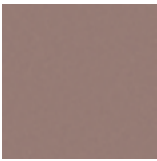
AVAILABLE IN:



Metallic Finish
Gold



Metallic Finish
Silver



Metallic Finish
Rose Gold



Dulux
Duramax
Metallic
Finish
Silver

Dulux
Duramax
Metallic
Finish gold

Dulux
Duramax
Metallic
Finish
Rose Gold



SPECIALTY DIAMOND FINISH

Dulux Duramax Diamond Finish can be sprayed over any *Dulux Duramax* colour to give a brilliant glittery finish. This sparkle effect is perfect for any object requiring a little more glitz!



WIPE



COVER



SHAKE



CLEAR



CLEAN



1. Before you start you will require the following items to complete the project:

- ✓ 1 can of *Dulux Duramax* High Performance Enamel Licked Lick Gloss
- ✓ 1 can of *Dulux Duramax* Diamond Finish Silver
- ✓ Damp cloth
- ✓ Drop sheet or newspaper
- ✓ Lazy Susan
- ✓ Sand paper



2. Apply 2 coats of *Dulux Duramax* High Performance Enamel Licked Lick Gloss.

Hold can upright 15 to 25cm from the surface. Use the lazy Susan by turning slowly as you spray with smooth, even strokes parallel to the surface. Apply in one or more light coats, as opposed to one heavy coat.



3. Apply one or more coats of *Dulux Duramax* Diamond Finish Silver to achieve the desired glitter density.

Use *Dulux Duramax* Diamond Finish over different *Dulux Duramax* colours:

TIP

Due to the sparkling nature of *Dulux Duramax* Diamond Finish, make sure your surface is as smooth as possible. Sand with extra fine P400-P600 sandpaper if required.

DESIGNER TIP

Diamond Finish Silver sprayed over any *Duramax* colour gives a brilliant glittery effect.

AVAILABLE IN:



Diamond Finish Silver over Ito Gloss



SPECIALTY

FROSTED GLASS EFFECT

Dulux Duramax Frosted Glass is a versatile effect that can update the appearance of glass with ease. This durable coating delivers a semi opaque, matte finish that when sprayed on part of an object offers dimension. Also ideal for glass windows where privacy is needed.



WIPE



MASK



COVER



SHAKE



CLEAR



CLEAN



1. Before you start you will require the following items to complete the project:

- ✓ 1 can of *Dulux Duramax* Glass Frosting
- ✓ 1 roll of good quality painters tape
- ✓ Damp cloth
- ✓ Drop sheet or newspaper
- ✓ Lazy Susan



2. Tape areas of vase that you do not want painted. Wipe down vase with a glass cleaner to remove any dust or fingerprints.



3. Use the lazy Susan by turning slowly as you spray. Apply 2 or more coats of *Dulux Duramax* Glass Frosting to achieve desired look.

Ensure you complete these steps to achieve the best results. Refer to the Important Steps page on the inside cover.

TIP

Use kitchen plastic wrap to cover large areas that you do not want to spray.

DESIGNER TIP

Apply multiple light coats of Frosted Glass to gradually build up the frosted effect. Create a bespoke pattern using tape as a stencil.

AVAILABLE IN:



Frosted Glass



SPECIALTY MAGNETIC CHALKBOARD

Dulux Duramax Magnetic Chalkboard is an easy to use specialty paint that can turn ordinary items into a fun interactive feature. Suitable for entertaining, office spaces or children's play areas.



WIPE



MASK



COVER



SHAKE



CLEAR



CLEAN



1. Before you start you will require the following items to complete the project:

- ✓ 1 can of *Dulux Duramax Magnetic Chalk Board*
- ✓ 1 roll of good quality painters tape
- ✓ Damp cloth
- ✓ Drop sheet or newspaper



2. Tape areas of serving board that you do not want painted. Wipe down board with a damp cloth to remove any dust or fingerprints.



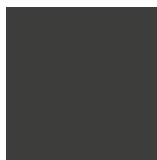
3. Apply 2 even coats of *Dulux Duramax Magnetic Chalkboard* and allow to dry before removing tape.

Note: Dulux Duramax Magnetic Chalkboard should be cleaned with a damp cloth. Some foods may mark the surface so we recommend using bowls when serving.

DESIGNER TIP

The magnetic feature of this product makes it a great choice for noticeboards or kids play areas.

AVAILABLE IN:



Magnetic Chalkboard Black



SPECIALTY

STAINLESS STEEL FINISH

Dulux Duramax Stainless Steel Finish can be used on a wide range of decorative items around the home to achieve a durable and stylish finish.



WIPE



COVER



SHAKE



CLEAR



CLEAN



1. Before you start you will require the following items to complete the project:

- ✓ 1 can of Dulux Duramax Stainless Steel Finish
- ✓ Damp cloth
- ✓ Drop sheet or newspaper
- ✓ Lazy Susan



2. Wipe down both bookends with a damp cloth to remove any dust or fingerprints. Place first bookend on the lazy Susan and turn slowly while spraying a light even spray of Dulux Duramax Stainless Steel Finish.



3. For a durable and smooth finish, apply second coat of Dulux Duramax Stainless Steel Finish. Once dry take bookend off the lazy Susan and repeat the process with the second bookend.

TIP

Dulux Duramax Stainless Steel Finish can also be used to repair scuff and scratch marks on stainless steel appliances.

AVAILABLE IN:



Stainless Steel





DESIGNER TIP

For a two colour distressed look – pick two colours and spray two coats of the first colour followed by two coats of the second colour. Wait 24 hours before sanding or distressing with a fine to medium grit sandpaper.

SPECIALTY CHALKY FINISH

Chalky Finish is a fast drying spray paint delivering an ultra matt finish and velvety appearance



Chalky Finish Parisian White



Chalky Finish Bordeaux Cream



Chalky Finish Classic Duck Egg



Chalky Finish Old Navy



Chalky Finish Pink Splendour



Chalky Finish Riviera Grey



Chalky Finish Elegant Greige



Chalky Finish Vintage Charcoal



Dulux Duramax
Tranquil
Retreat

Dulux Duramax
Appliance
White

Dulux Duramax
Flat black



For even more inspiration follow
@duluxnz on instagram



Dulux®

Worth doing, worth Dulux.

For project tips, how-tos and inspiration, visit
dulux.co.nz/products/duramax

dulux.co.nz

Live Chat 7 days a week 10am – 10pm

Customer Service 0800 800 424

Dulux New Zealand, 150 Hutt Park Road, Gracefield, Lower Hutt.

Disclaimers: Colours shown are as close as possible to actual paint colours. Please note, due to limitations of the printing process, photographic and printed images may not represent the true colour.

*Dulux Duramax dries ten times faster than alkyd based spray paint.

• Test the plastic projects in an inconspicuous area first. Some plastics like polyethylene do not allow for paint adhesion even with primers.

Registered trademark information: Dulux, Duramax, Worth doing, worth Dulux, the Squares Device, the Sheepdog device and Antique White U.S.A. are registered trade marks and Vivid White is a trade mark of DuluxGroup (Australia) Pty Ltd.

