

Streamline NX

The all-in-one device management, scanning and printing software you wish you had! It's here.



Wherever your colleagues are working, they need secure scan, print and fax capabilities close at hand. That means you need speed and simplicity in setting up, managing, troubleshooting and reporting on these devices — no matter where in the world they're located.

Ricoh Streamline NX gives you everything you need to keep multifunction devices running and reliable through a single interface. Finally, you have a central command center to support these devices — whether networked or standalone, and regardless of manufacturer.

We intentionally designed Streamline NX as a platform that centralizes device and driver management, card authentication, chargeback, scanning, mobile and secure printing and reporting. It's a scalable suite of solutions that's easy for users to navigate at the device level and frictionless for IT departments tasked with the complex work of device connections across a fleet.

Highlights

- One interface for all your needs
- Supports devices from multiple manufacturers
- Powerful printing rules engine
- Simple integration
- Flexible, secure scanning
- Convenient mobile printing and print management
- Robust reporting out of the box
- Multiple “scan to destination” connectors
- Optimized for Ricoh's Smart Operation Panel

Streamline NX at-a-glance

Get a feel for how Streamline NX works. Use the clickable menu to explore features and functions.



Set Up

Simplified functionality and device updates, with the ability to create configuration templates.



Security & Control

Multiple authentication options, user control of print timing and pickup, security compliance tracking and more.



Ongoing Device Management

Proactive tasks to ensure device availability — plus the insights you need for decisions.



Authentication

Intelligently designed to combine user friendliness with the enhanced data security you expect.



Administration & Reporting

Generate all kinds of analyses for device fleet management, accounting, security and planning.



Mobile Support

An intuitive interface puts secure printing, scanning and routing at the user's fingertips.



Scan & Capture

Digitize documents and easily import content into business systems with high-accuracy OCR.



Secure Printing

Available control options range from data encryption to restrictions on color and single-side printing.



“Work from Home” (WFH) Client

Monitor home office printing to track status and usage of company devices.

Built for scale — right from the start

Streamline NX is scalable to a wide range of networked and non-networked print devices. (Even non-Ricoh ones.) All modules and capabilities can be accessed through one central platform, so there's no need to separately install and configure multiple applications to get the functionality you need.

Adding and updating devices? Easy.

Export settings from one device to create a template that can be cloned to configure similar units. Pre-configured, prepackaged print drivers also let you lock or hide specific print settings per user — and even set mandatory pop-ups to enter billing codes or authentication every time. Batch configuration keeps things moving by performing remote fleet updates, firmware updates, configuration and maintenance on multiple devices at once.

Add easy driver distribution

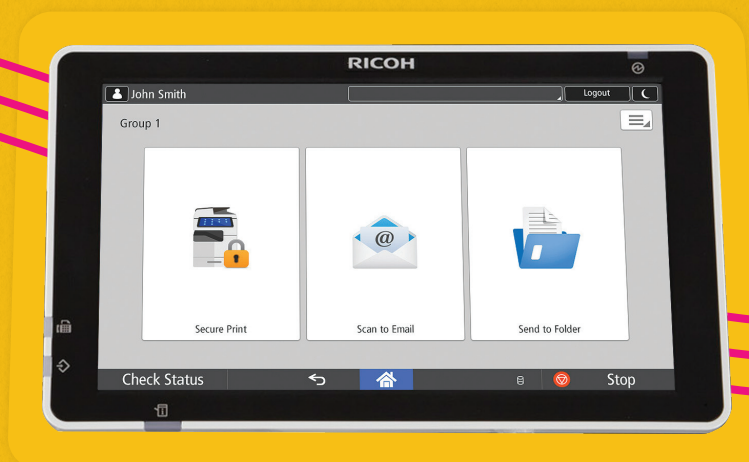
The Advanced Driver Distribution License enhancement gives users three additional ways to download drivers:

1. Browsing the device list
2. Choosing from the floor map view
3. Searching for specific criteria

The software can even auto-detect users' operating systems to ensure a correct match and successful driver deployment.

Convert paper documents to digital

Streamline NX makes it easy to bring paper documents and forms into your digital processes. Powerful and highly precise optical character recognition creates searchable and editable data files with up to 99.8% accuracy. Additionally, optional Zonal OCR & Barcode functionality allows you to target sections of data extraction that can be pulled into pre-defined routing workflows.



Maintain the reins without slowing things down

A positive user experience

Improve the user experience with a single sign-on for all tasks available to the individual. No more unauthorized usage or misunderstandings about which users can access what functions. With Streamline NX, users can authenticate at the device using the same card issued to access buildings.

These authentication methods can double as a vehicle to manage user privileges, such as restricting the use of color, regulating scanning (Scan & Capture Option) or ensuring privacy of printing through a controlled queue (Secure Print Option).

Custom security roles

In addition to built-in security roles, Streamline NX also allows for the creation of custom security roles as well as security by device groups. There are no confidential data or passwords stored on the server. Streamline NX uses Windows® security SQL server connections, with additional security also provided in each optional module.

Data protection by design

Ricoh's "data protection by design" philosophy takes into the account the customer's need to implement appropriate technical and organizational measures to assure data security. This requirement factors into the design of Streamline NX and ensures administrators have the functionality they need to meet their legal, regulatory and user requirements.

Real time compliance monitoring

Add on Security Analyst to get a real-time view of your cybersecurity landscape and quickly identify devices that are not in compliance with your company's security policies. Use the dashboard to get a high-level picture of your entire fleet and easily drill down to device groups or individual devices.



Stay on top of all the details. Hunt for nothing.

Streamline NX keeps your team proactive with device management, so “reactive” remains a rarity. The platform discovers the devices on your network and automatically collects data on operating status, toner and paper levels (including consumption histories) and other indicators of readiness. Enhanced error polling alerts you to emerging issues. You can quickly respond so users don’t miss a beat.

Capture the data devices generate

The @Remote Connector NX enhancement makes data easily consumable through a web portal. Make informed decisions on fleet efficiency — including underused and overworked units — to minimize print costs, evaluate environmental key performance indicators and more. Real-time device status and reports are accessible on tablets, laptops and smartphones — so you’ll always have fresh insights close-at-hand.

[Read more about Administration & Reporting](#)

Enforce rules and manage users

A single interface makes it easy to configure settings, enforce policies, manage quotas and generate reports. You can also manage user privileges and access/audit user job logs. With authentication against external LDAP or Kerberos databases supported, you can manage client user roles and accounts at a global level — including login authentication, privileges and reporting restrictions.

Key features



Monitor devices for total print meter, toner, paper levels and other functions



Collect detailed meter, alert and status information



Service alerts by email



Remote fleet management



Usability of devices is the whole point. Provide options.

A balanced approach

Deliver the perfect balance of secure printing and a user-friendly experience. Streamline NX offers expanded options for user authentication:

- In addition to network login via username and password or PIN, you can also incorporate authentication functionality onto the same cards used to access buildings.
- Want to authenticate against multiple directory services? You can do that too – making it easy to manage client user roles and accounts at a global level.

User integrity can be further strengthened by adding Secure Print to prevent confidential documents from being printed unattended. Meanwhile, administrators can configure settings, enforce policies, manage quotas and generate reports all through a single interface.

Key features



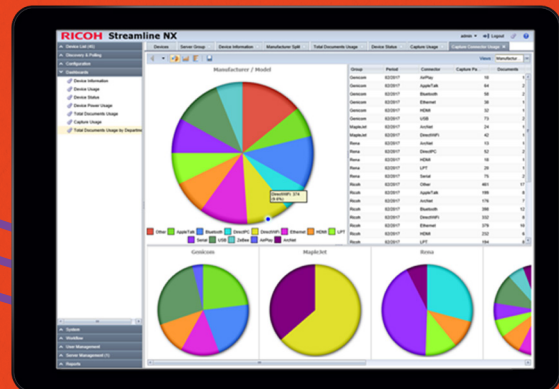
Authentication at the MFP by network login, PIN or user card

SSO

Single sign-on for all tasks available to the user



Authentication with a range of proximity cards, including HID/iClass, CASI-Rusco, Mifare and NxtWtch (requires the Scan & Capture or Secure Print Options)



A wealth of information at hand

Analyze data without IT assistance

Streamline NX solves the problem of piecing together usage data. Pre-formatted reports eliminate the need for manual calculations. In addition to a large library of standard reports, Streamline NX gives you the ability to customize analytics, run aggregated reports, drill down to specific users, track workflow usage and monitor your environmental impact. Compile data for your entire fleet — with easy to interpret visualization.

Administrators can access reports and dashboards via their mobile devices, so answers are available wherever they are. In addition to the robust reporting features included in the Streamline NX BASE product, adding the Scan & Capture Option or the Secure Print Option can give you even more capabilities such as providing print tracking data and other related metrics.

See user activity

Track user activity by account codes and extend tracking to secure print, scan and fax by adding optional modules. Monitor printing, copying, scanning and faxing activities at the device from the Streamline NX server. Distinguish color usage from black & white, and measure output by duplex settings or paper size. Establish print rules to allow or restrict settings, and set roles-based administrative levels. Set user quotas for print and empower your accounting staff to better allocate print costs with chargeback capabilities.

Capture insights and trends

RICOH Streamline NX gives you access to data, insights and trends and delivers full-featured reporting capabilities. This means you get accurate information to evaluate your device fleet and plan for optimal performance and cost savings.

Manage from one view

Use one unified management console to administer all facets of Streamline NX. Access 35+ dashboard reports and 90+ standard reports (accounting, detailed job and scan usage, device status, power usage, document usage, environmental impact and more.) Something missing? Set up your own custom reports in 3 steps — complete with your company logo.

Accounting & chargeback

Single-platform ease comes in handy when configuring chargeback settings for budgetary account limits. Enable client billing and project codes to track print costs back to individual users, groups, departments or project codes. Produce accounting reports that break down details in a variety of ways: Cost savings by date, department or user. Simplex vs. duplex usage. Workflow usage analysis reports by cost center, department, device, server or user, and more.

Print tracking is supported by Ricoh universal print drivers and can be used with pop-ups for shared PC environments.

Key features



Set roles-based administrative levels



Establish printing rules to allow/restrict certain settings



Manage user privileges, access and audit user job logs



Establish chargebacks and set budgetary account limits



Over 90 standard reports — including 35+ dashboard reports and “green” reports

Offices may be stationary, but people aren't.

A Streamlined mobile experience

Hybrid workers can work from anywhere, so we designed Streamline NX to provide comprehensive mobile support. We use the same familiar user interface down to customizable home screens, so nothing new to learn. Tailor the mobile experience even further by defining a mobile device profile.

Secure document release

With the Secure Print Option and Scan & Capture Option, mobile device users can control the print release queue and route captured images to a specific destination, such as a Ricoh or third-party printer, email, designated folder or business system. Add Streamline Mobile Intranet Extender to support printing to remote networks. For users working offline, images and data can be captured and later submitted when connected.

Administrator ease

In addition to offering increased mobile productivity for users, Streamline NX can help administrators do their jobs quickly and efficiently with the fastest possible response. View status alerts, manage devices and access reports from iOS or Android™ devices. Take advantage of camera capabilities to capture photos of your fleet for a visual index. Make this index available to help users easily search specific printers by visual location.

Key features



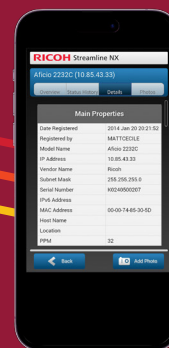
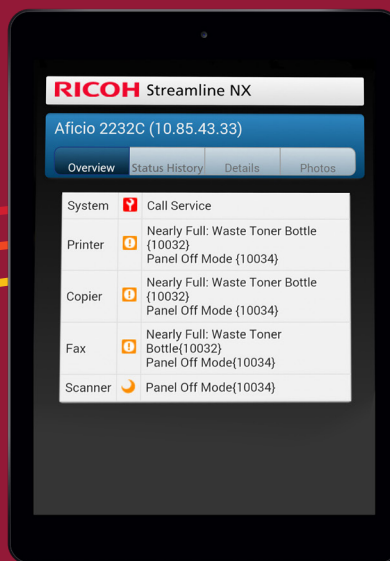
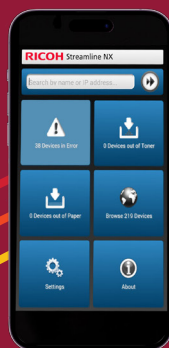
Device support for many common mobile devices running iOS and Android™



Print to remote networks using Mobile Intranet Extender (MIE)



Receive notifications and alerts and manage devices on-the-go



Transform paper into a powerful digital tool

The functionality you need, without the fuss

Convert scanned paper documents into electronic files and route them to email, network and home folders, enterprise content management, fax, FTP and other systems. Convenient connectors enable you to provide integration with line of business systems, perform processes like barcode and OCR, and easily transfer data to the cloud.

Nearly perfect OCR

Powerful optical character recognition technology converts paper to digital with up to 99.8% accuracy. Using the optional Scan & Capture Process Connector, which adds zonal OCR & Barcode functionality, users can target specific areas for data extraction and easily index into popular back-end document management systems.

Search, assess and edit with ease

With document preview features, users can closely examine documents before distributing. Also handy: The ability to convert scanned documents into versatile formats including searchable PDF/PDFA, Microsoft® Word® RTF, Microsoft® Excel® and others — without messing up carefully formatted tables and diagrams. There are also advanced features for Bates stamping, watermarks and image clean-up — and an optional Scan & Capture Process Connector to read linear and 2D barcodes.

Key features



Scan & route to email, local and cloud folder, fax, desktop PC, FTP and more



OCR with support for searchable and editable formats, including PDF, Microsoft® Word®, Excel® and more



Included connectors provide direct scanning integration with OpenText Content Server, RightFax, DocuWare and more



Manage user privileges with card authentication — such as restricting the use of color and regulating scanning



Safeguard sensitive and confidential information

Avoid the print-job pileup, maintain privacy

When printed documents aren't picked up, they're likely to get lost in the shuffle — but worse than that, it puts privacy, security and compliance at risk. Streamline NX Secure Print Option puts an end to these concerns.

Locked print processes

Whether working on the network or from a mobile device, a user can hold print jobs in a queue. When ready, the user can authenticate and activate the print request to arrive at chosen printer. Stored print jobs are displayed on the device's touch screen display or mobile app.*

Print job encryption

Per your company's policies, the Secure Print Option through our PC Client add-on encrypts data from start to finish. Encrypted data cannot be compromised even if the device is stolen.

Set your own administrative controls

The Secure Print Option helps you manage your print costs and device workload. For example, set monthly limits on print output, force use of duplex printing, deny color printing to certain users and establish a "delete date" for print jobs remaining in the queue after a specified time.

[Read more about Authentication](#)

Key features



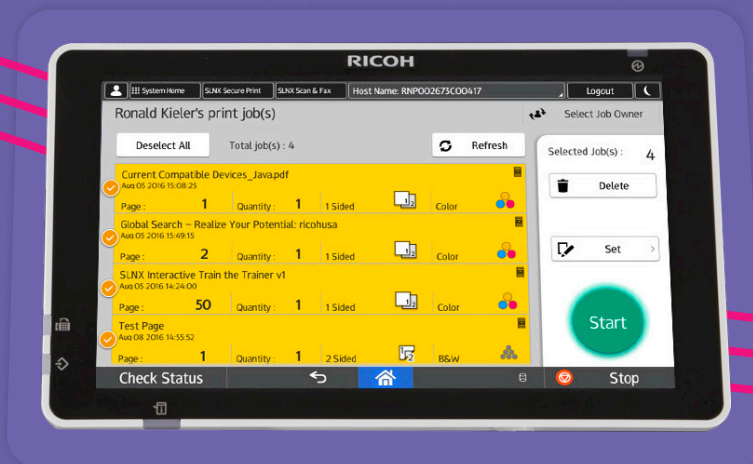
Easily release confidential documents at the MFP with flexible user authentication methods including support for card access



Held print jobs are encrypted at rest and can be easily released by authorized users



Send and release print jobs from mobile devices



* Mobile capabilities require iOS 7.0.x or later or Android™ 4.4 or later

Embrace workplace flexibility with enhanced visibility

Keep an eye on corporate assets

With the shift to hybrid and remote work models comes a new print management challenge: how to keep track of a fleet of office equipment — outside the office. Now Streamline NX can help you do just that. Our WFH feature makes it easy to monitor company-owned equipment wherever your team works, so you can maintain agility, efficiency and compliance from anywhere.

Understand who printed what and when

Get visibility into your full fleet’s operations with insights into job name, number of prints, color vs. monochrome and more. Retain historical data and track print attributes over time to ensure compliance with security and usage protocols.

Ensure your hybrid team’s success

Enhance WFH productivity with the ability to monitor device status with ease. Get alerts for device downtime and maintenance needs to facilitate troubleshooting and inform service schedules. You can also monitor paper and toner stock to aid in supply ordering and ensure your team is never left with a blank page.

Key features



Monitor device use based on model, serial number, MAC address and more



Support security with records of print jobs for every device



Inform reordering with alerts to low paper or toner supplies





Take information management to the NX level

Print, scan, fax, share, secure and manage devices with more options and less limits. Streamline NX gets you there.

[ricoh-usa.com](https://www.ricoh-usa.com)

Contact us for a personal demo.

800-637-4264

Ricoh USA, Inc. 300 Eagleview Boulevard, Exton, PA 19341 | 1-800-63-RICOH

©2023 Ricoh USA, Inc. All rights reserved. Ricoh® and the Ricoh logo are registered trademarks of Company, Ltd. All other trademarks are the property of their respective owners. The content of this document, and the appearance, features and specifications of Ricoh products and services are subject to change from time to time without notice. Products are shown with optional features. While care has been taken to ensure the accuracy of this information, Ricoh makes no representation or warranties about the accuracy, completeness or adequacy of the information contained herein, and shall not be liable for any errors or omissions in these materials. Actual results will vary depending upon use of the products and services, and the conditions and factors affecting performance. The only warranties for Ricoh products and services are as set forth in the express warranty statements accompanying them.