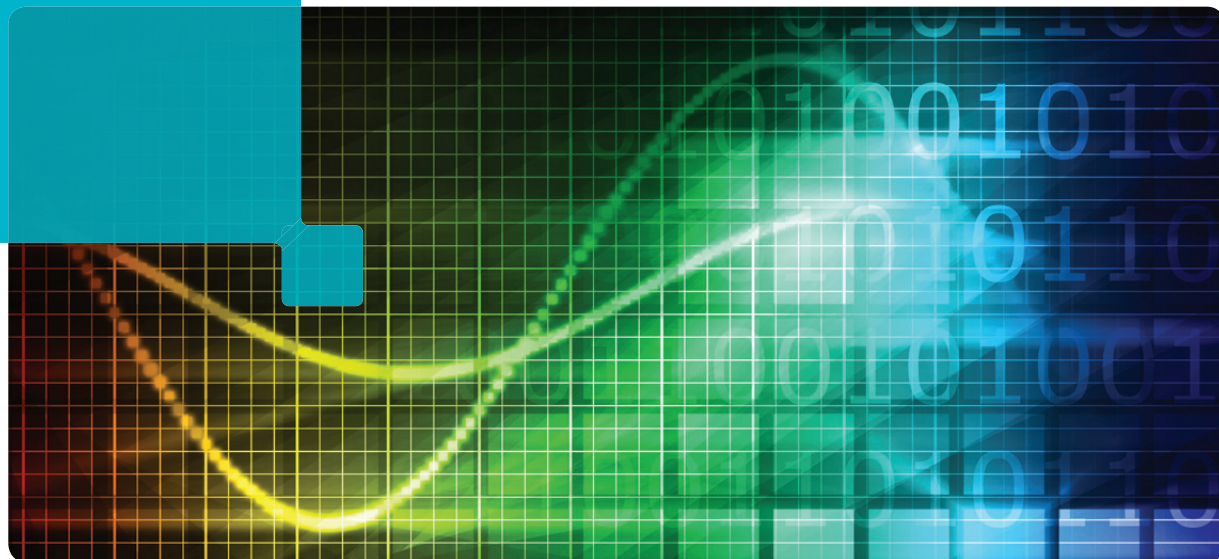


InfoPrint Productivity Tracker

RICOH
imagine. change.



See quickly how to improve print operations and reduce cost

InfoPrint® Productivity Tracker software provides extensive information about what has occurred during production by logging events in the printer control unit. InfoPrint Productivity Tracker then extracts the events and organizes them in a relational database. This allows you to view information on printer performance, operator and work shift activities or job completion over any period of time. With readily available in-depth machine utilization and operator data, you can gain insights that help you optimize print operations, maximize printer utilization, minimize labor cost and reduce cost of printing.

InfoPrint Productivity Tracker also equips your organization with a strategic foundation to implement future productivity-related enhancements.

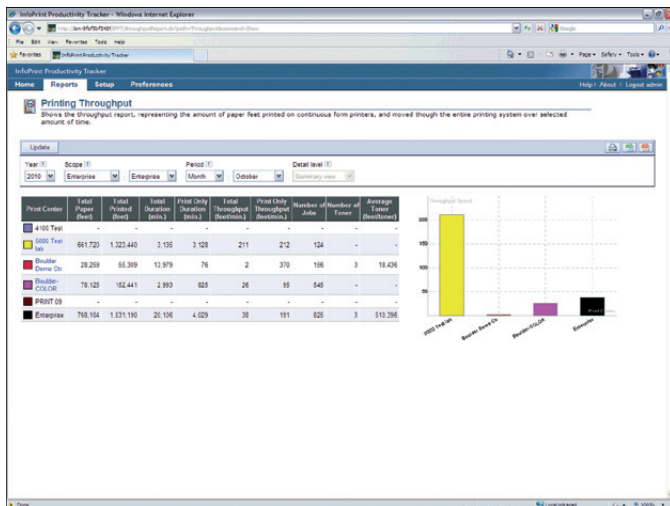
Capture, display and analyze data using concise tables, graphs and charts

InfoPrint Productivity Tracker helps you monitor printers by transferring captured events stored in the printer's controller into the InfoPrint Productivity Tracker database and generating comprehensive reports using both standard and custom formats. You can display data graphically to help you conduct a thorough analysis of the printing process throughout your production environment. Over time, the database yields historical trends that can help you identify ways to reduce costs and plan for the future.

HIGHLIGHTS

- Helps you gain valuable insights into continuous feed printer performance with the Throughput Report
- Expands data gathering capability with cutsheet printer support
- Collects SNMP printer data from private and public MIBs to provide printer status information and the SNMP Throughput Report
- Saves time with scheduled emailing of reports
- Includes a custom reports tool to help you create templates and analyze, view and store the data your way
- Exports reports to .CSV, .PDF or print formats with one simple click
- Extends functionality and increases control with user-defined events and support for multiple users
- Offers an optional WebServices API to expedite data extraction and integration with other applications

InfoPrint Productivity Tracker



Throughput Report

InfoPrint Productivity Tracker allows pre-defined and user-defined activities to be created at the printer. For example, pre-post equipment events can be inserted into the production statistics database using an easy-to-use touch screen graphical interface on the printer console. This allows InfoPrint Productivity Tracker to address your end-to-end print production environment. In addition, multiple users can easily access the events database via the web to facilitate broader use of operational data.

Drill deep into your operation with standard and custom reports

After you capture pre-defined and user-defined events with InfoPrint Productivity Tracker, you can produce standard or custom graphs and reports to communicate findings and support decision making. Choose information based on location, time frame, printer, operator and work shift. Verify uptime and downtime, calculate productivity and manage cost effectively. Drill down through the data to specific events. Create, save and email custom reports.

Sample basic reports that can be organized by enterprise, print center, print system, work shift or operator include:

- Throughput Report
- SNMP Throughput Report
- Operator Production
- Work Shift Production
- Print Production
- Print Server Volume
(link to RICOH ProcessDirector server)
- Intervention
- Printer State
- SNMP Printer State
- Toner Adds

Answer frequently asked production questions

With InfoPrint Productivity Tracker, you can use the supplied tools to extract data or customize the reports and charts to meet particular requirements. As a result, you can answer common questions, such as:

- Did my printers run at rated speed? If not, why not?
- How many linear feet did our printers run last quarter?
- How many minutes were the printers idle and when were they idle?
- How many linear feet were run for a specific job?
- How many times did the operators load toner for a job?
- Which operators ran a job, with which snapshot and on which printers?

Speed up operational analysis and decision-making

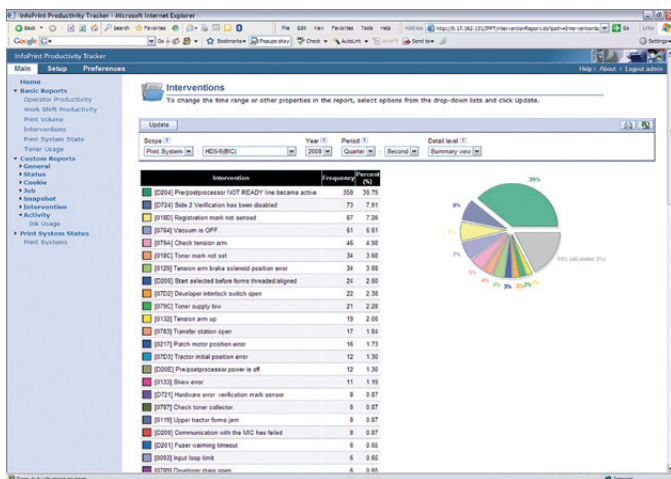
InfoPrint Productivity Tracker software is designed to integrate seamlessly with the printer controller to provide operational data in seconds. With valuable production information at your fingertips, you can save the direct labor costs associated with manual data gathering, analysis and report preparation. With automated data collection, you can improve the accuracy of analysis and forecasting.

InfoPrint Productivity Tracker is easy to install on a PC that you provide. This time-saving solution is designed to help you identify and act on events to improve efficiency and responsiveness in a deadline-driven production environment.

Ricoh's implementation and training services for InfoPrint Productivity Tracker can help you quickly and efficiently integrate the software into your environment to help you get more out of your investment immediately.

Monitor your operation when you're on the go

InfoPrint Productivity Tracker provides a web server so you can log in, retrieve, store and display printer monitor data from anywhere. InfoPrint Productivity Tracker is supported on Windows® operating systems.



At-a-glance types of interventions on each printer

A strategic foundation for growth

- Boost efficiencies with comprehensive production statistics
- Enable analysis over specific time periods to improve workload balancing, enhance problem determination and track operational standards
- Organize production data in a database, providing a tool for long-term trend analysis
- Produce standard or custom reports with graphs and drill-down capability

The data tells the story

With the right data, you can solve problems quickly and make better decisions about your print environment. InfoPrint Productivity Tracker reporting capabilities include:

Throughput Report

This report allows you to compare the total paper movement, the total print throughput, the number of jobs and the number of toner adds across the enterprise. You can quickly drill down to the job level to discover which printers, jobs or operators are stopping you from reaching your rated printer speeds or service level agreements.

SNMP data collection

InfoPrint Productivity Tracker software enables printer production data to be collected at two levels from the SNMP MIB. Both Printer State Reports and Throughput Reports are available to display the results. Low-level data is available via the public MIB from nearly all printers on your floor. Additional production print data is available from many Ricoh printers via the private SNMP job MIB.

InfoPrint Productivity Tracker

InfoPrint Productivity Tracker Version 2.2.1 at a glance

Items	Specifications
Minimum prerequisites:	<ul style="list-style-type: none">• Recommended: Microsoft® Windows XP, Windows 7, 2003 Server or 2008 Server operating systems server grade PC with Ethernet TCP/IP capability and connectivity to an InfoPrint 4100, InfoPrint 4000¹ or InfoPrint 5000 printer• Either dual-core 2.0 GHz or single-core 3.0 GHz Processor, 2 GB RAM, with 500 MB free hard disk space plus 500 MB free hard disk space for each print system• In addition, the server should be dedicated to InfoPrint Productivity Tracker
InfoPrint Productivity Tracker also requires:	<ul style="list-style-type: none">• An InfoPrint 4100, InfoPrint 4000 or InfoPrint 5000 with the InfoPrint Productivity Tracker feature with Ethernet connectivity to the Windows operating system PC• Microsoft® Windows 32 or 64-bit Microsoft® Windows XP, Windows 7, 2003 Server or 2008 Server operating system

ENDNOTES

¹ Enhanced console feature 4450/9450 on the InfoPrint 4000 is required for the InfoPrint Productivity Tracker.

For more information

Try InfoPrint Productivity Tracker free for 60 days. Just [download it](#) and see how easy it is to use.

Contact your Ricoh production print specialist or visit <http://rpp.ricoh-usa.com/products/software/manage/infoprint-productivity-tracker> for more information.

RICOH
imagine. change.

www.ricoh-usa.com

© Copyright Ricoh Company, Ltd. 2014.
All Rights Reserved.
6300 Diagonal Hwy 002J
Boulder, CO 80301-9270

Ricoh® and InfoPrint® are trademarks or registered trademarks of Ricoh Co., Ltd., in Japan, the United States and other countries.

All other trademarks are the property of their respective owners. Product performance may be affected by environmental factors. Specifications and external appearances are subject to change without notice. Products may be shown with optional features.

IPRD03002-USEN-05