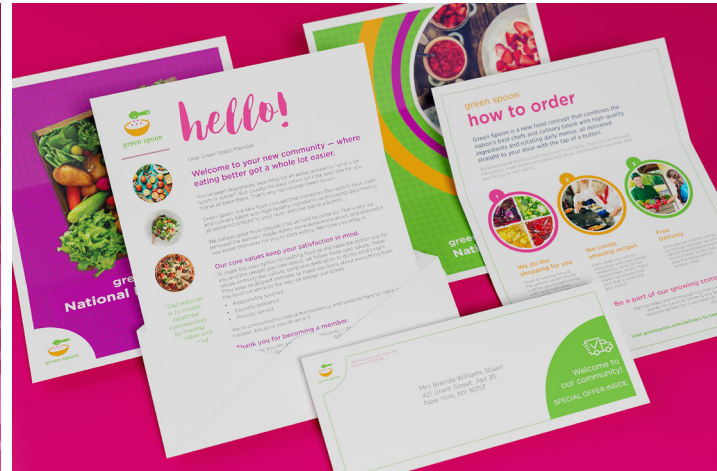


A-Qua Mailer™ Desktop & Web



Mail Data Processing Solutions

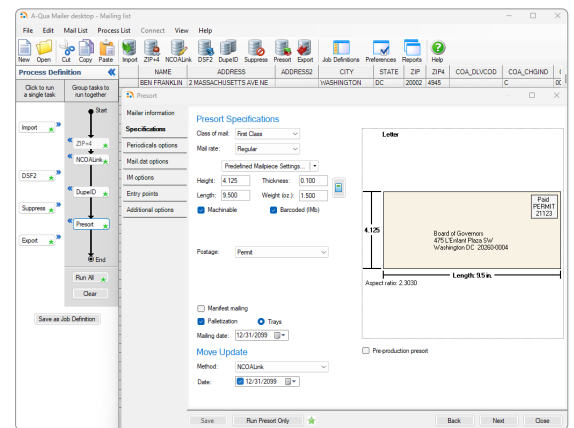
Save on Costs and Increase Processing Efficiency

- CASS Certified™ ZIP + 4® coding, NCOALink® processing, Dupe ID / Elimination, DSF2®, and PAVE™ Certified Postal Presort are included in the basic service.
- Easy maintenance and no directories to install mean less dependence on valuable resources.
- Automatic updates assure that you are accessing the most up-to-date mail data processing available.
- Various pricing plans allow for flexible budgeting.

Rely on Lorton Data's Expert Support

- Excellent one-to-one customer support via live chat, email, and phone
- USPS® Full-Service licensee for NCOALink® processing
- 25 years of experience in the postal industry, and continually monitors changing regulations

A-Qua Mailer™ desktop



Presort screen in A-Qua Mailer desktop

- Grid view for data manipulation and editing
- Concurrent job submission
- Easy-to-use, intuitive interface
- Merge multiple files and standardize headings
- All functionality available within the same application
- Automatic updates



Mail Solutions

Benefit from Robust Features

- **Job Templates and Profiles**
Speed up entry process for repeat jobs
- **PAF Storage and Management**
Electronically view and manage previously submitted PAFs
- **Full-Service Intelligent Mail® Barcode (IMb™) Unique ID Management**
Easily reference all your unique serial numbers associated with Full-Service IMb jobs
- **Intelligent Mail® Package Barcode (IMpb) Support**
Specify the Postal Service's next generation tracking barcode for parcels and extra services
- **Account Management**
User administrative functionality
- **Submit Multiple Services at the Same Time**
Save time by choosing all the services for your job at once — no need to start over for each service
- **Access Advanced Capabilities**
This includes Palletization, Manifest Mailing, Drop Shipping, Package Services, EDDM® and Electronic Certified Mail™

Lorton Data

Lorton Data provides, manages, and analyzes data to enhance customers' multichannel marketing efforts. From direct mail to email, phone, advertising and social media campaigns, Lorton Data's strategic approach, extensive capabilities, and renowned customer service bring you higher returns on your marketing investment.

Lorton Data is a trusted provider of mailing software solutions, and A-Qua Mailer is the company's flagship product. With its range of powerful features and ease of use, A-Qua Mailer is the ideal solution for companies looking to streamline their direct mail processing and improve the impact of their campaigns and customer communications.

The Security of your Data is Paramount

Lorton Data has a long history of establishing and refining its controls to secure client data in an ever changing and increasingly connected world. Lorton Data is audited by an independent external organization under the requirements of the American Institute of Certified Public Accounts, and receives a SOC 2 Type 2 report for security, availability, confidentiality and privacy of our data center and data processing.

A-Qua Mailer™

web

The screenshot displays the 'Presort Specifications' interface in the A-Qua Mailer web application. It features a navigation bar with 'Main Menu', 'Manage Templates', 'Help', and 'Logout'. The main content area is divided into two sections: 'Mail Piece Specifications' and 'Presort Details'. The 'Mail Piece Specifications' section includes dropdown menus for 'Class of mail' (Standard Mail) and 'Mail rate' (Regular), along with input fields for 'Height (in): 4', 'Length (in): 6', 'Sample thickness (in): 0.01', 'Sample weight (oz): 1', and 'Sample count: 1'. A 'Piece category' dropdown is set to 'Letter - machinable'. A 'Calculated piece category' section shows 'Letter - Machinable'. The 'Presort Details' section contains various checkboxes and dropdowns for 'Sort for automation', 'Carrier route (CRRT)', 'CRRT bundle min', 'Sort for walk sequence', 'Manifest mailing Batch size', 'Postage payment', 'Permit number', 'Stamp value', 'Visual separators', 'Election/Political', 'Incentives', 'Palletization', 'Trays', 'Sacks', 'Packages', 'Container Options', and 'Mail.dat Options'. On the right side, a diagram illustrates a mail piece with dimensions: Thickness 0.01 in., Weight 0.1 oz., Length 6 in., and Aspect Ratio 1.5. The mail piece is labeled 'Board of Governors 475 L Street, N.W. Washington DC 20530-0004' and 'Permit 123'. A 'LIVE SUPPORT ONLINE' button is visible in the top right corner.

Presort screen in A-Qua Mailer web

- Access services from anywhere, anytime with an internet connection
- No software to install or maintain
- Easy to use, intuitive interface
- Secure connection for data protection
- Fully automated with A-Qua Mailer command

 **Lorton data**

2 Pine Tree Dr Ste 302, Arden Hills, MN 55112
Phone: 651-203-0290 | www.lortondata.com
©Lorton Data, Inc. 2023