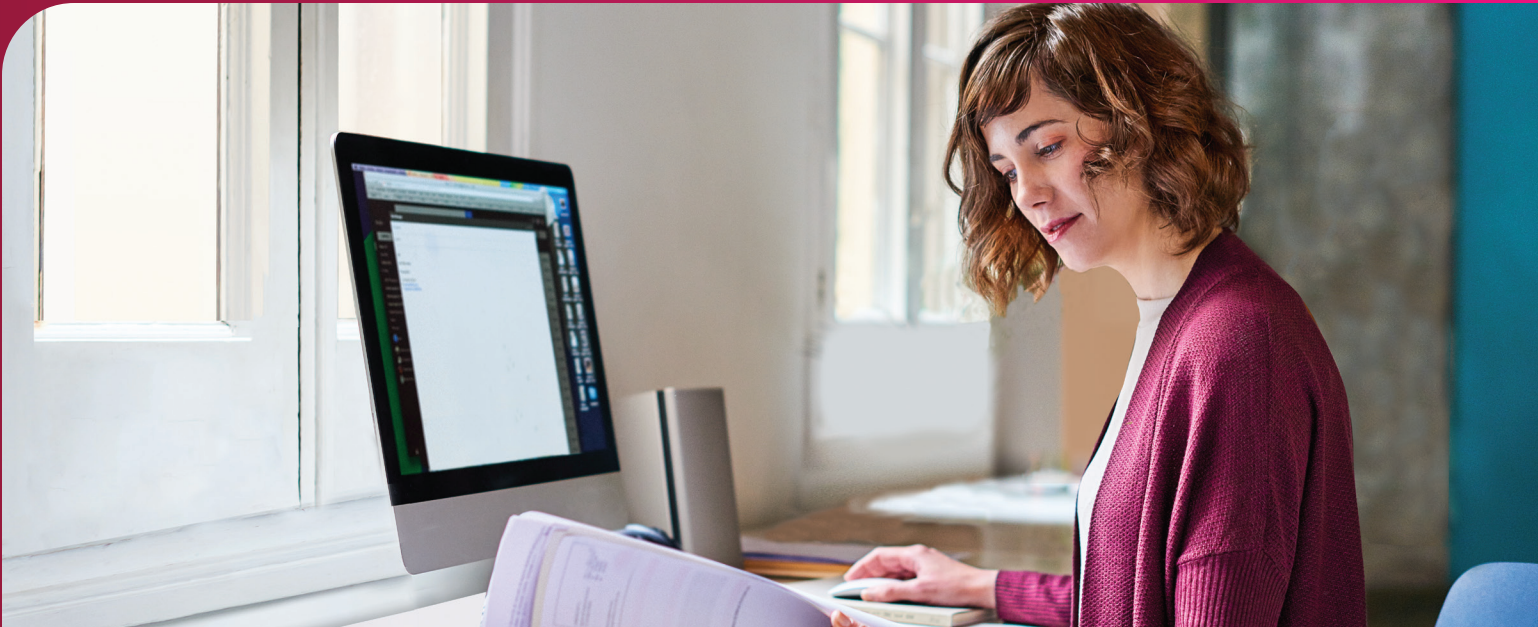


RICOH CloudStream

Eliminate servers, reduce costs and support remote printing with cloud technology



Looking to find ways to reduce IT workload while supporting onsite, mobile and remote workers? RICOH CloudStream lets you do all that and more — by managing your print network through an all-in-one hybrid print platform.

RICOH CloudStream is a unique print infrastructure solution that enables companies of all sizes to unlock the efficiency, agility and cost-savings of cloud technology. For hassle-free, secure access to printers — from anywhere.

Highlights



Quick cloud migration
Easily migrate to a cloud environment and replace existing Windows- and Mac-based print infrastructure in minutes.



Contactless printing
Improve workplace safety by enabling end-users to print without touching the printer or multifunctional device's control panel.



Cloud-based print management
Manage your print network across multiple locations and reduce user friction with the ability to set location-aware printers — for secure, seamless access from anywhere.



Vendor agnostic
Use a single print driver while still allowing users to connect to multiple printers and print from any device.

Say goodbye to servers

Reduce the costs and complexities associated with traditional print environments. RICOH CloudStream removes the need for print servers, eliminates common IT helpdesk pain points and frees your IT team to focus on other priorities.

Unleash the potential of today's hybrid workforce

Employees can print to any device, from any device, no matter where they are. This enables greater flexibility and productivity, while maintaining the monitoring and control capabilities you need.

Best-in-class security

Protect your data with features including end-to-end server to hardware encryption, user authentication, auditing functionality, and integration with cloud-based authentication.

Ricoh CloudStream is ISO/IEC 27001 certified which includes SOC2 compliance as well as a commitment to continual maintenance and improvement to ensure what's secure today stays secure tomorrow. With Canadian data sovereignty, Ricoh CloudStream helps protect your private and confidential information and avoids other countries from acquiring that data.

One solution — hosted anywhere

RICOH CloudStream can be delivered as a hosted Software as a Service (SaaS) offering or installed as an on-premise private cloud.

Streamline administrative tasks

RICOH CloudStream makes it easy to deploy, monitor, control, update and manage your entire printing infrastructure from a single web-based interface — with no need to install and maintain multiple print drivers.

Create the ideal environment

Use RICOH CloudStream to update and configure your print infrastructure in a way that works best for you. Set up a system that equips end-users with hassle-free printing that supports your current and future needs.

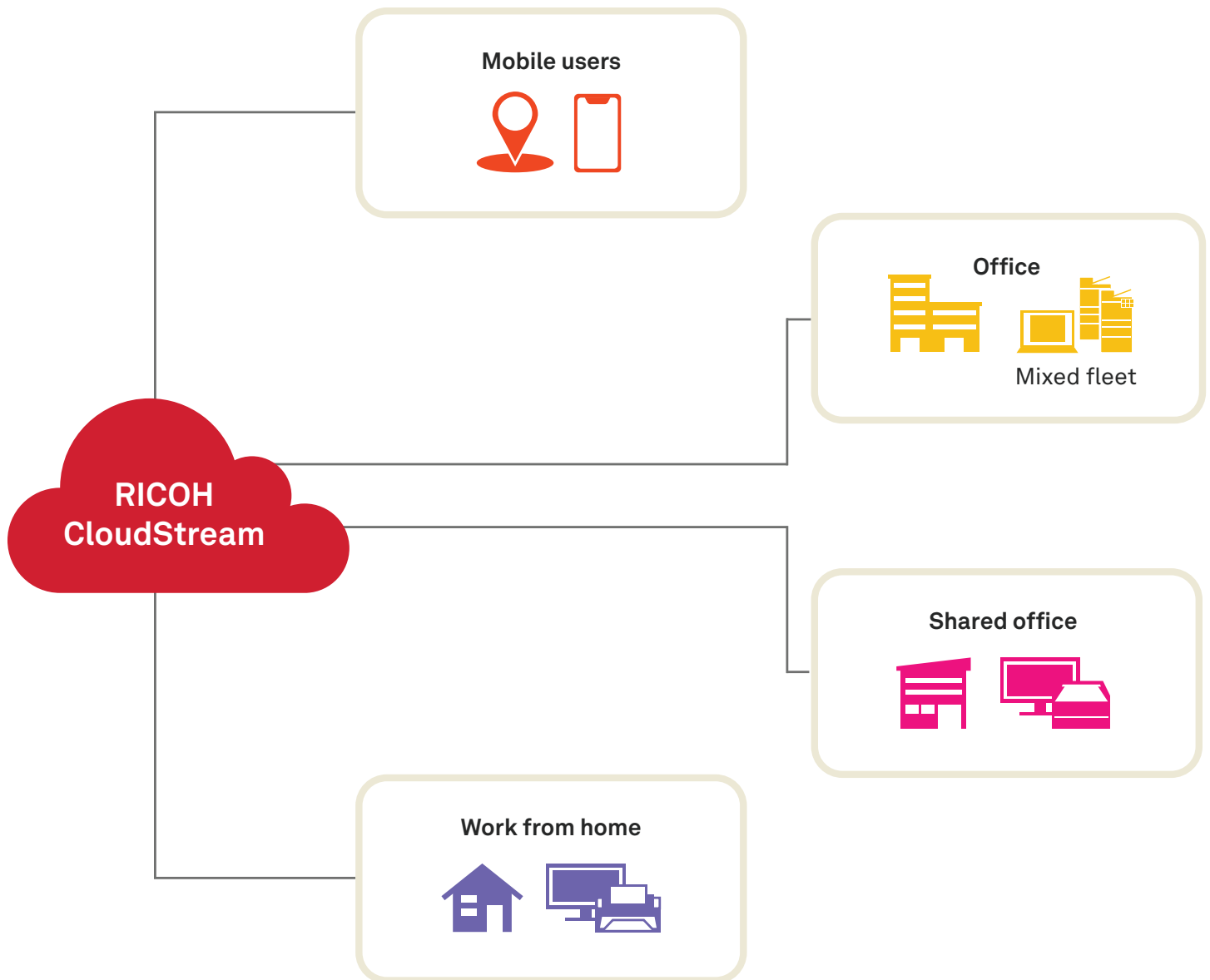
Multi-tenant platform

Create your own print environment on Ricoh CloudStream's multi-tenant platform, replace existing Windows and Mac-based print infrastructure in less than ten minutes.



Support your employees' printer needs, no matter where they are

Access changes everything. RICOH CloudStream allows you to virtually support all your team members — from anywhere and on any device. That means you can optimize operations, unite siloed and mixed fleets, and so much more.



Accelerate digital transformation

- Secure
- Cloud Solution

Optimize business operations

- Unify mixed fleet
- Serverless

Enable distributed workforce

- Any location
- Consistent user experience



Unlock the full benefits of the cloud. With RICOH CloudStream.

For more information on RICOH CloudStream and how to subscribe, please contact your account manager.

sales@ricoh.ca | 800-637-4264

[ricoh.ca](https://www.ricoh.ca)

Ricoh Canada Inc., 100-5560 Explorer Drive, Mississauga, ON L4W 5M3, 1-888-742-6417

©2023. Ricoh Canada Inc. All rights reserved. Ricoh and the Ricoh logo® are registered trademarks of Ricoh Company, Ltd. All other trademarks are the property of their respective owners. The content of this document, and the appearance, features and specifications of Ricoh products and services are subject to change from time to time without notice. Products are shown with optional features. While care has been taken to ensure the accuracy of this information, Ricoh makes no representation or warranties about the accuracy, completeness or adequacy of the information contained herein, and shall not be liable for any errors or omissions in these materials. Actual results will vary depending upon use of the products and services, and the conditions and factors affecting performance. The only warranties for Ricoh products and services are as set forth in the express warranty statements accompanying them.