



Do you have a loved one detained at the NWIPC (Tacoma ICE Detention Center)?

If your loved one has been detained at the Northwest ICE Processing Center (NWIPC):

We see you. We know this can be one of the most painful and confusing experiences anyone can go through. The immigration detention system is designed to separate families, profit from suffering, and make every step difficult.

The NWIPC is a facility operated by a private company that profits from incarcerating immigrants. Everything there comes at a price — from making a phone call to getting the most basic necessities.

We've prepared this guide to help you navigate a system intentionally built to be cruel and complicated. Here you'll find key information on how to locate someone in detention, stay in contact, send money, schedule visits, and learn about daily life inside the facility.

We know this doesn't make the system fair, but we hope it makes it a little less overwhelming.

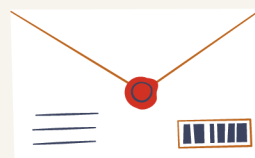
You're not alone. There's a community here to support you.



How to know if someone is detained

Call GEO at (253) 396-1611. Please have the person's full name, date of birth, country of origin, and A-number ready. You can also search online at locator.ice.gov.

Sending letters by mail



Only paper is allowed: no objects, rubber bands, or staples.

Use this format:



[Detainee Name]
A#[Number]
NW ICE Processing Center
1623 East J Street, Suite 5,
Tacoma, WA 98421

Money & Commissary

To send money to their commissary account (for snacks, hygiene items, stationery, clothing):

Online: accesscorrections.com

By phone: 1-866-345-1884

**In person or by mail: with cash or
USPS money order**

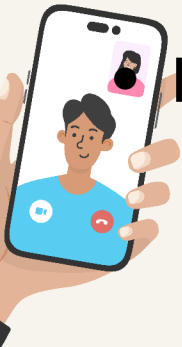


The commissary fund is also used to pay for regular phone calls (not video calls).

Communicating with your loved one



- You can't call detained people using regular phone calls. They must call you.
- The detention center offers shared tablets for video calls, messaging, music, and movies. These are shared among multiple people, so availability may vary.
- **Create an account on gettingout.com to:**
 - Schedule and make video calls
 - Sending and receiving text messages
 - Load funds for communication and entertainment



Estimated prices (subject to change):

- Calls within the US: ~\$0.20/minute
- International calls: ~\$0.75/minute
- Video calls: ~\$0.25/minute
- Text messages: ~\$0.35/message

ALL COMMUNICATIONS MAY BE RECORDED AND MONITORED BY ICE, DHS, OR GEO.

DOWNLOAD THESE APPS!



Access Corrections: To reload funds for commissary (for regular calls, food, hygiene, etc.)



GTL Getting Out: For sending text messages and depositing funds for communication (texts and video calls) and entertainment.



Getting Out Visits: Receive video calls from your loved one, schedule future calls, or request an immediate video call.

In-person visits

Visitation is available daily! Times vary based on security classification. Call (253) 396-1611 and press option 6 to confirm visiting hours.



Some things to consider:

- Visits take place through a glass partition, and no physical contact is allowed.
- You must bring official identification to be allowed in.
- Personal belongings are not permitted in the visiting area, but lockers are provided for storage.
- Parking is available on the street only.
- If you don't have legal status or have an open immigration case, some lawyers recommend that it may be safer not to visit in person.

Belongings

Generally, you can not drop off or send belongings to your loved one. However, if your loved one is being deported, they may receive one suitcase up to 40 pounds, but they must first request approval from ICE. All items will be inspected by GEO staff.



If the detained person wishes to release personal belongings they had at the time of their arrest (keys, phone, etc.) , they must submit a request directly to ICE.



Immigration Court

There is an immigration court inside the detention center for detained individuals.

Hearings are technically public, but you will only be allowed inside the courtroom during your loved one's portion of the proceedings. Staff will let you in when the hearing begins and escort you out right after. You may not speak to or communicate with your loved one. Arrive at least 15 minutes early to check in. The court has a strict dress code - no jackets, sweaters (including cardigans), or hoodies. Be sure to wear clothing that provides proper coverage.

What is daily life like?

- There are board games, card games, and sports like soccer, basketball, and ping pong.
- Detainees can sign up to visit the law library.
- There is sometimes access to go outside to the yard.
- Religious services are available.
- During the day, they usually have access to TV and movies.
- Meals are served three times a day.
- There is an infirmary for medical care.
- Sleeping arrangements are in shared bunk areas, usually with about six people per section.

The detention center provides basic activities and services, but access is often limited and conditions vary. Many people inside report long waits, poor quality, and inconsistent availability. What's listed above may not reflect everyone's experience.



Resources

Portland Immigrant Rights Coalition (PIRC):

A grassroots, volunteer-led network that monitors ICE activity and supports immigrant communities across Oregon.

<https://www.pircoregon.org>

Equity Corps of Oregon (ECO):

A universal legal representation program providing immigration defense services to Oregonians at risk of deportation.

<https://www.equitycorps.org>

La Resistencia:

A grassroots organization led by undocumented people, fighting to shut down the Northwest Detention Center and end all detention and deportation.

<https://laresistencianw.org>

Northwest Immigrant Rights Project (NWIRP):

Provides high-quality legal services and advocacy for immigrants in Washington State to promote justice and equity.

<https://www.nwirp.org>

Washington Immigrant Solidarity Network (WAISN):

A statewide coalition building immigrant power through community defense, rapid response, and advocacy.

<https://www.waisn.org>

Advocates for Immigrants in Detention Northwest (AIDNW):

Supports detained immigrants in Tacoma and helps them reintegrate upon release with hospitality and resources.

<https://www.aidnw.org>

Has someone in your family been detained by ICE or have you witnessed an ICE raid in your community?



**IF SO, CALL THE
PIRC HOTLINE:**



1-888-622-1510

**With this number we can
also inform you about:**

- Finding the services of an immigration attorney
- Mobilizing the community if someone in your family is detained by ICE
- Finding accompaniment to immigration appointments
- Finding other community resources to help