



Reference Number	Bulletin 02 2021 Revision 01
Affected Product	Caterpillar Link Brackets – part numbers listed below
Risks Identified	Potential risk of personal injury and/or property damage due to a failure of affected link brackets.
Release Date	08 April 2021, Revised 14 May 2021

Problem Overview

Certain Caterpillar link brackets with part numbers **589-7433, 589-7434, 589-7435, 589-7436, 589-7437** and **589-7438** may have defective butt welds in the chain link portion of the component. Other part numbers are not affected.

Caterpillar is investigating the problem, and a further communication may be released which identifies the specific batch codes affected. At the date of this bulletin, users should consider all listed part numbers as suspect, particularly if the link bracket has not been visually inspected by a competent person prior to use.

Link brackets are lifting appliances when attached to components to lift or support components during service operations. Most link brackets have two chain links, the smaller sizes only have one link, but the welds on both links need to be inspected. Any link brackets with the appearance of poor-quality welds should be removed from service until further advised.

This bulletin indicated earlier that only Caterpillar Link Bracket part number 589-7436 with supplier batch code (NLNLMN) and 589-7437 with supplier batch code (NENLMN) may have inadequate welds on the chain links. **This bulletin update does not change that information but adds the additional part numbers without any supplier batch code effectivity known at the date of this publication.**

See images below for reference to the location of the potential inadequate weld on the links and location of the part number and supplier batch code.

Actions Required:

Users should inspect and remove all new and used 589-7436 and 589-7437 link brackets with supplier batch codes of NLNLMN and NENLMN from parts inventory and service facilities.

All other affected part number link brackets [with any batch code] should be withdrawn from use, unless the link bracket has been inspected by a competent person in accordance with AS-4991:2004 section 15 and found satisfactory.

The Caterpillar part number and supplier batch codes are marked on the safety tag that is attached to the link bracket. See illustration 1 below for an example of the Cat part number identification and supplier batch code on 589-7436.

See Illustration 2 below for an example of the Caterpillar part number and the supplier batch code identification on 589-7437.

Quarantine all affected inventory and remove affected link brackets from service until further advised.



Illustration 1 589-7436 - Batch Code NLNLMN



Illustration 2 589-7437 - Batch Code NENLMN

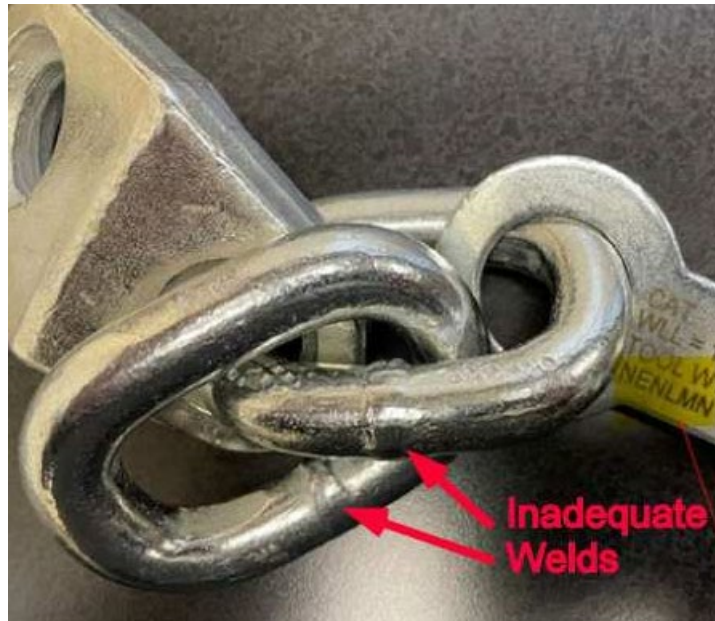


Illustration 3 showing inadequate welds on links

This bulletin is to inform you of the recommendations of the supplier in respect of issues dealt with in the bulletin and should not be used as specific advice in respect of any particular events. Advice from a qualified repairer should be sought in respect of any particular events and Hastings Deering (Australia) Ltd accepts no responsibility for any loss or damage occasioned by a party using this bulletin.