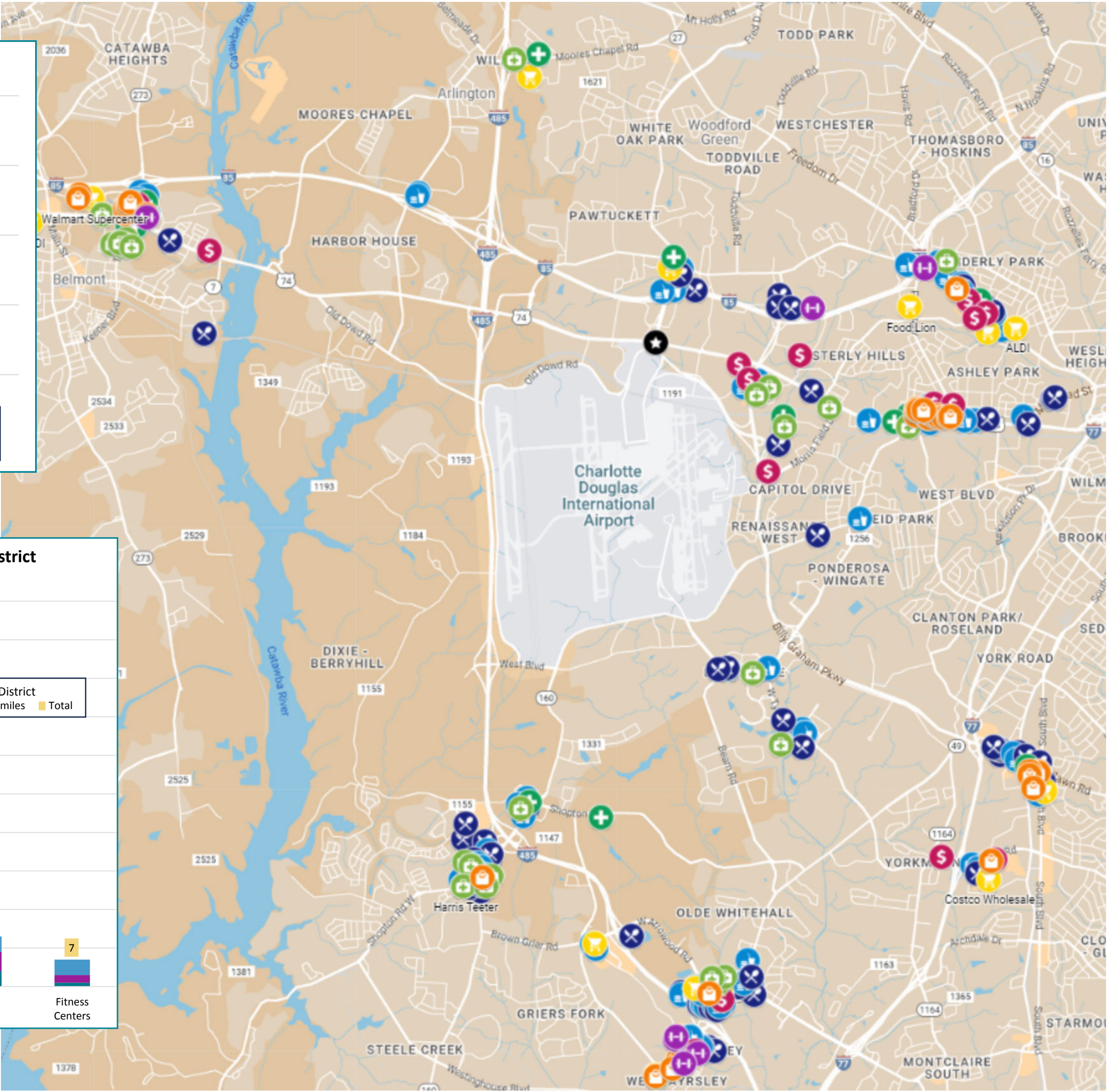
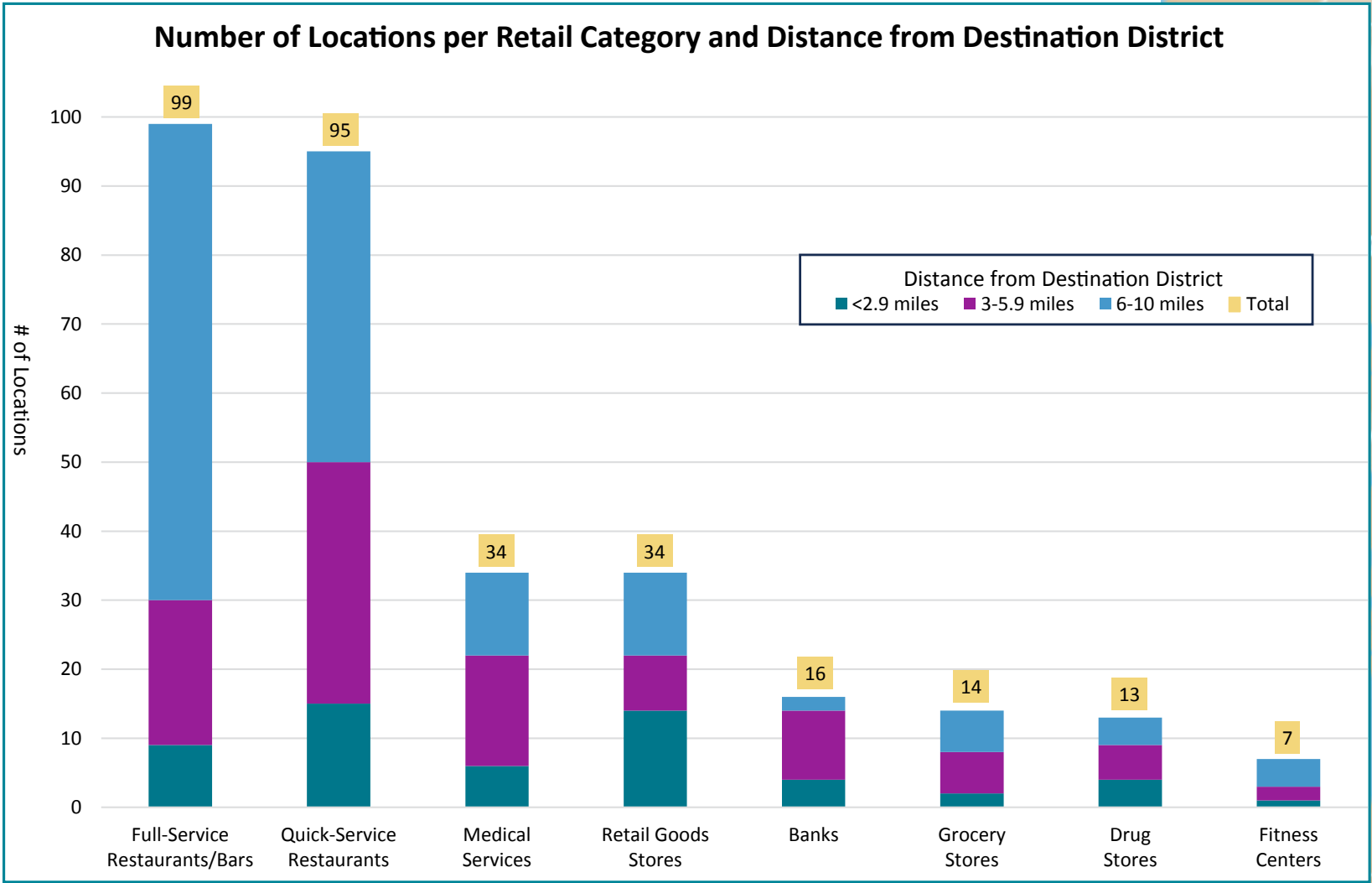
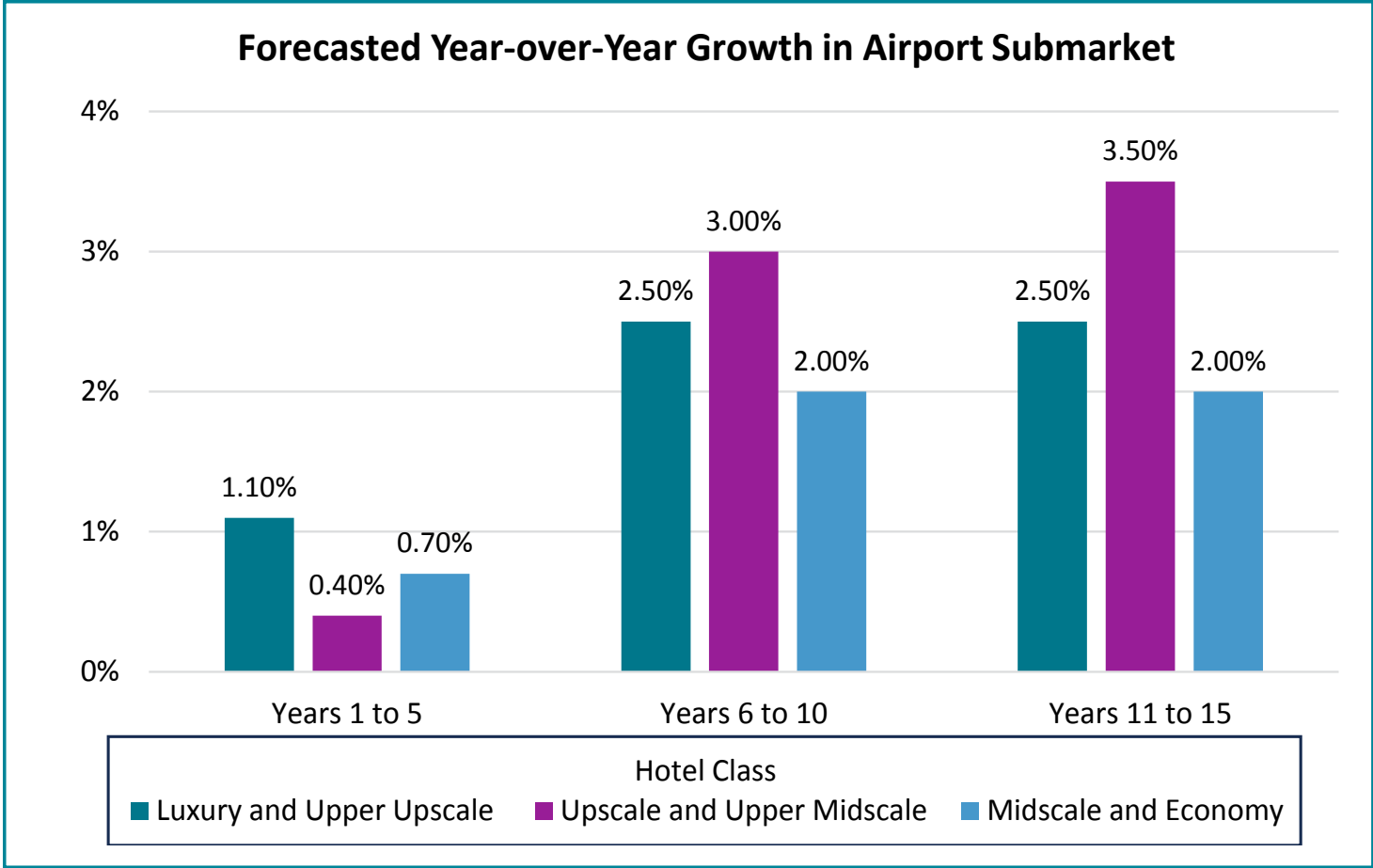
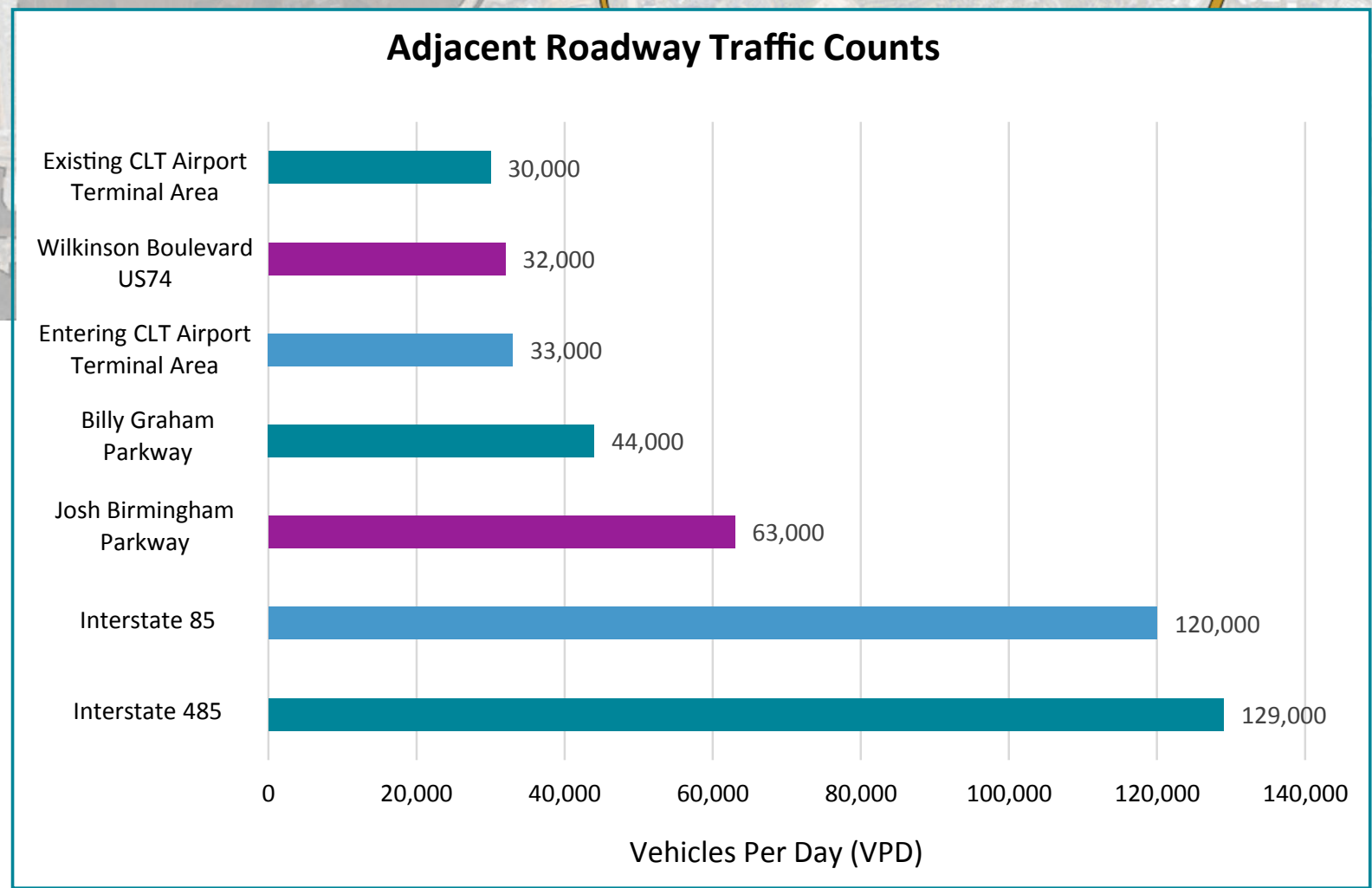
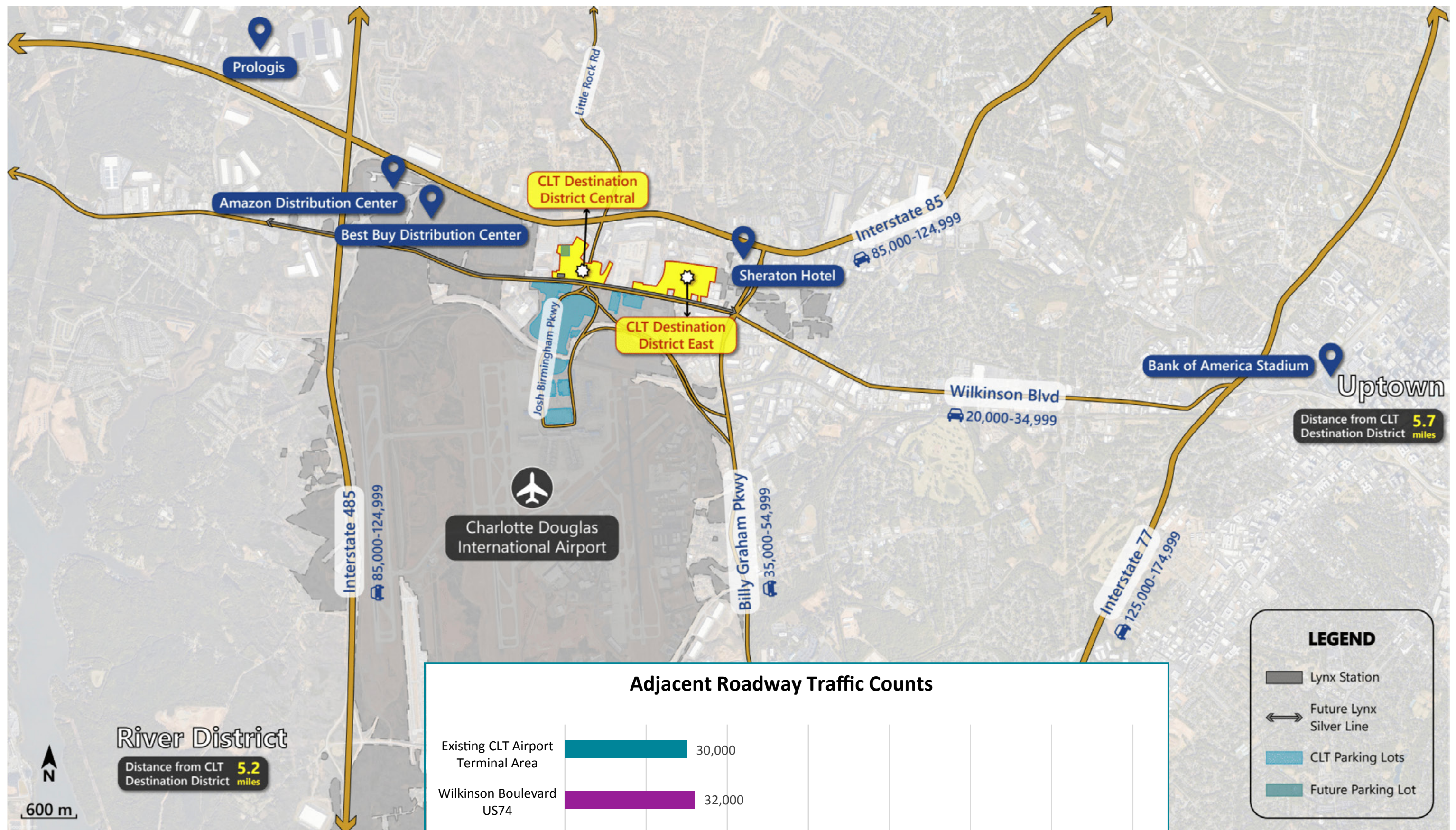


An aerial rendering of a proposed development project. The scene shows a multi-lane highway in the foreground, with several large, modern buildings and parking lots planned along its side. The buildings have white and light-colored facades with some red accents. The parking lots are filled with small cars. The surrounding area includes existing buildings, trees, and a body of water on the right. A teal diagonal overlay covers the left side of the image, containing the project name in white text.

CLT DESTINATION DISTRICT DEVELOPMENT





DESTINATION DISTRICT CENTRAL DEVELOPMENT HIGHLIGHTS

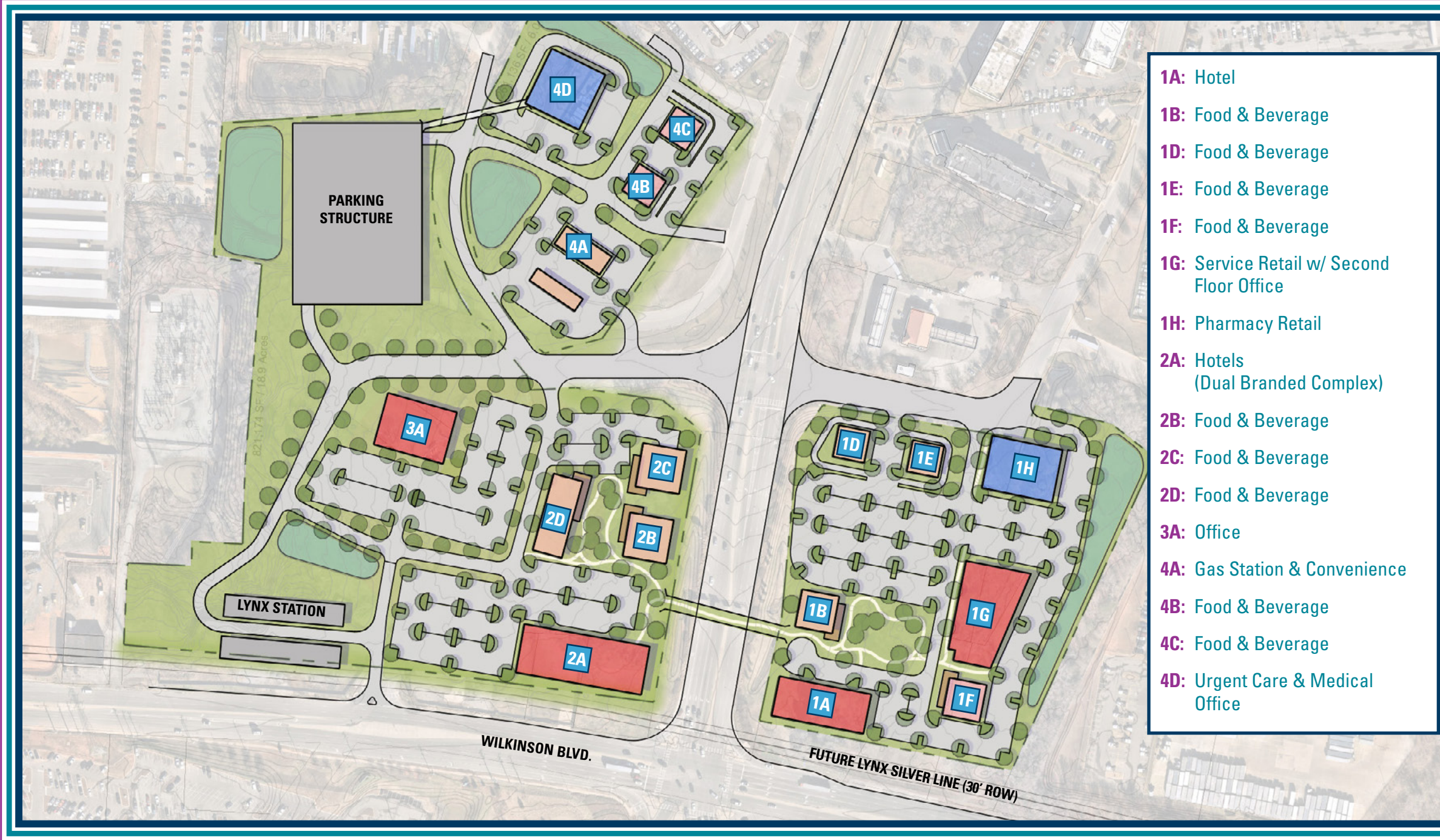


Figure 1: West Master Plan

Sub Area	Development Use	Net Developable Acres
1A	Select Service Upper Midscale 120- Room Hotel	2
1B	Food & Beverage (Full-Service Restaurant)	1
1C	Open Green Space	1
1D	Food & Beverage (Fast Food)	1
1E	Food & Beverage (Fast Food)	1
1F	Food & Beverage (Full-Service Restaurant)	1
1G	Service Retail w/ Second Floor Office	3
1H	Pharmacy	2
2A	Full-Service Upper Upscale 260-Room Hotel w/ 10,000SF Conference Center	2.5
2B	Food & Beverage (Destination Restaurant)	1
2C	Food & Beverage (Destination Restaurant)	1
2D	Food & Beverage (Brewery)	1.5

Sub Area	Development Use	Net Developable Acres
	CATS LYNX Silver Line Light Rail Station	3
	TOD Parking	6
3A	Office	3
4A	Gas Station & Convenience Station	2
4B	Food & Beverage (Fast Food)	.5
4C	Food & Beverage (Fast Food)	.5
4D	Urgent Care & Medical Office	2

DESTINATION
DISTRICT EAST
DEVELOPMENT
HIGHLIGHTS

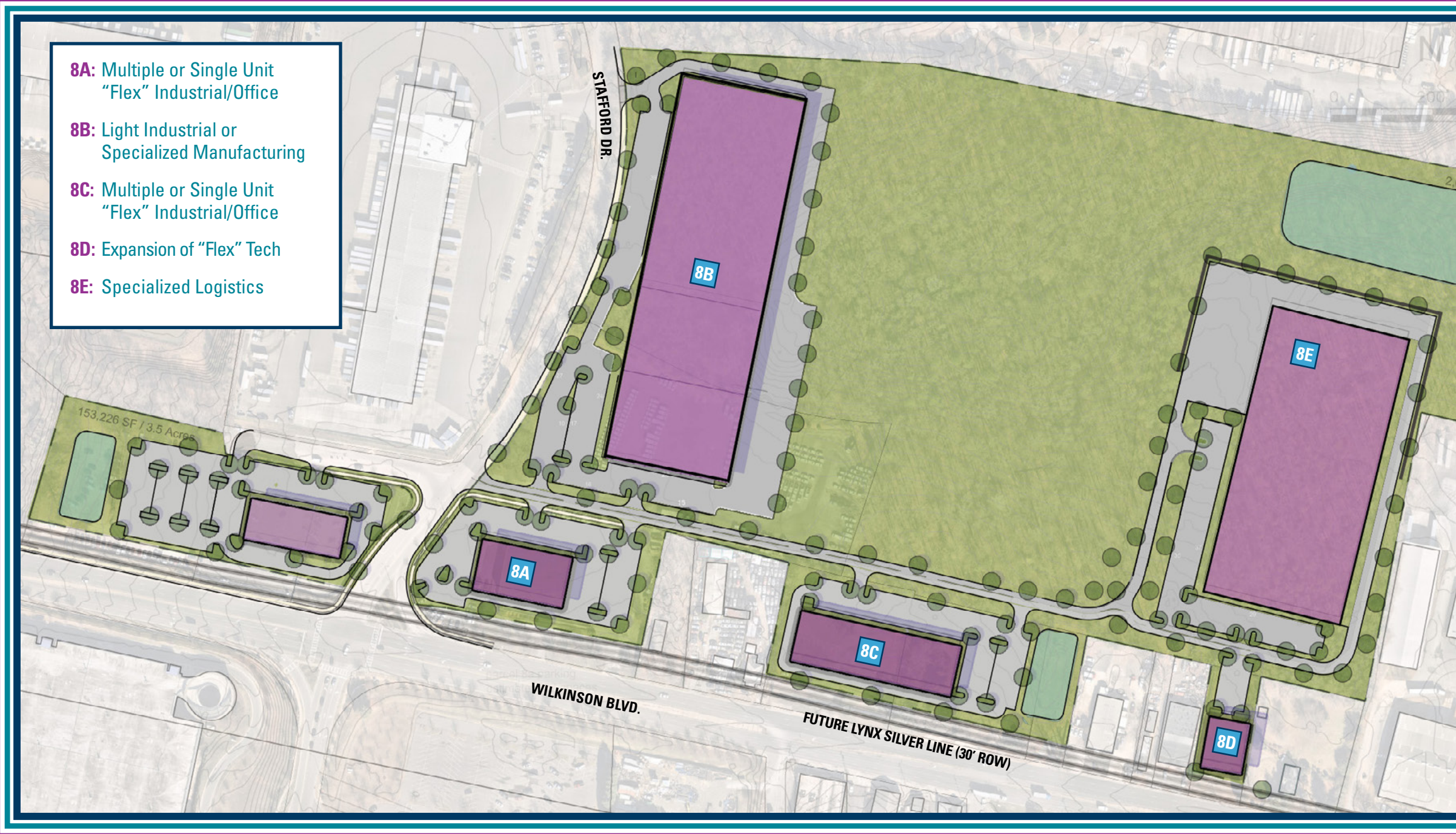


Figure 2: East Master Plan

Sub Area	Development Use	Net Developable Acres
8A	Light Industrial/Multi-Tenant Flex	2.5
8B	Light Industrial/Multi-Tenant Flex	16
8C & D	Light Industrial/Multi-Tenant	2.6
8E	Specialized Logistics	18.4

An aerial photograph of an airport development site, overlaid with a teal color scheme. The image shows various buildings, parking lots, and roads. Labels for 'WILKINSON BLVD' and 'N JOSH BIRMINGHAM PKWY' are visible on the roads. A large teal triangle on the left side contains the main title.

DESTINATION DISTRICT RFP HIGHLIGHTS

RFP Issued: Winter 2024

Council Approval of Agreement: Fall 2024

To learn more about the Destination District RFP,
contact Stuart Hair at DestinationDistrictRFP@cltairport.com.

