

Slate of Recommendations

CLT Airport Community Roundtable

March 20, 2019

ACR Slate of Recommendations – 2019

Altitude-based turns after departure

Divergent departure headings

Noise abatement departure procedures

Alternating downwind arrival rails

Delay aircraft turns after departure

Alter heading for initial turn after departure



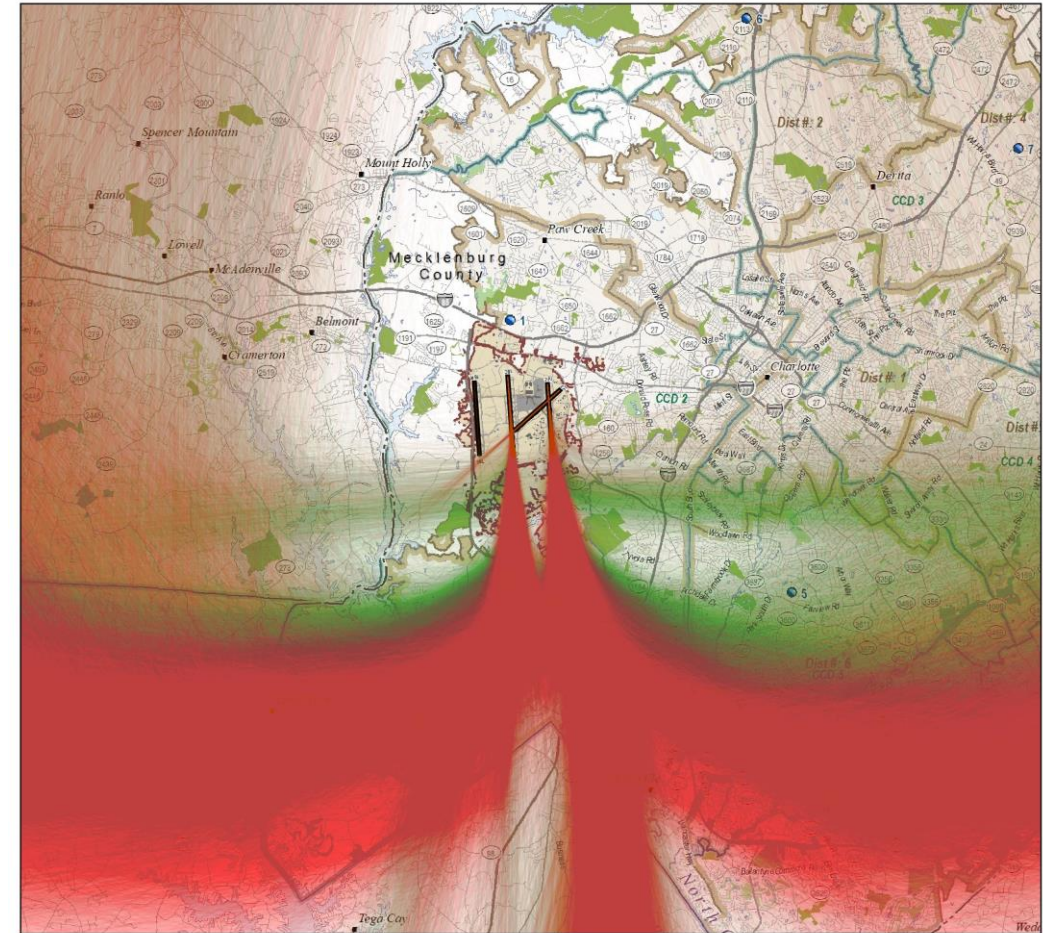
Altitude-Based Turns After Departure

- Proposal:

Turn aircraft when they reach a specific altitude rather than at a particular distance from the airport

- Expected Results:

- Greater dispersion
- Higher in altitude before turning over communities (lower noise levels)



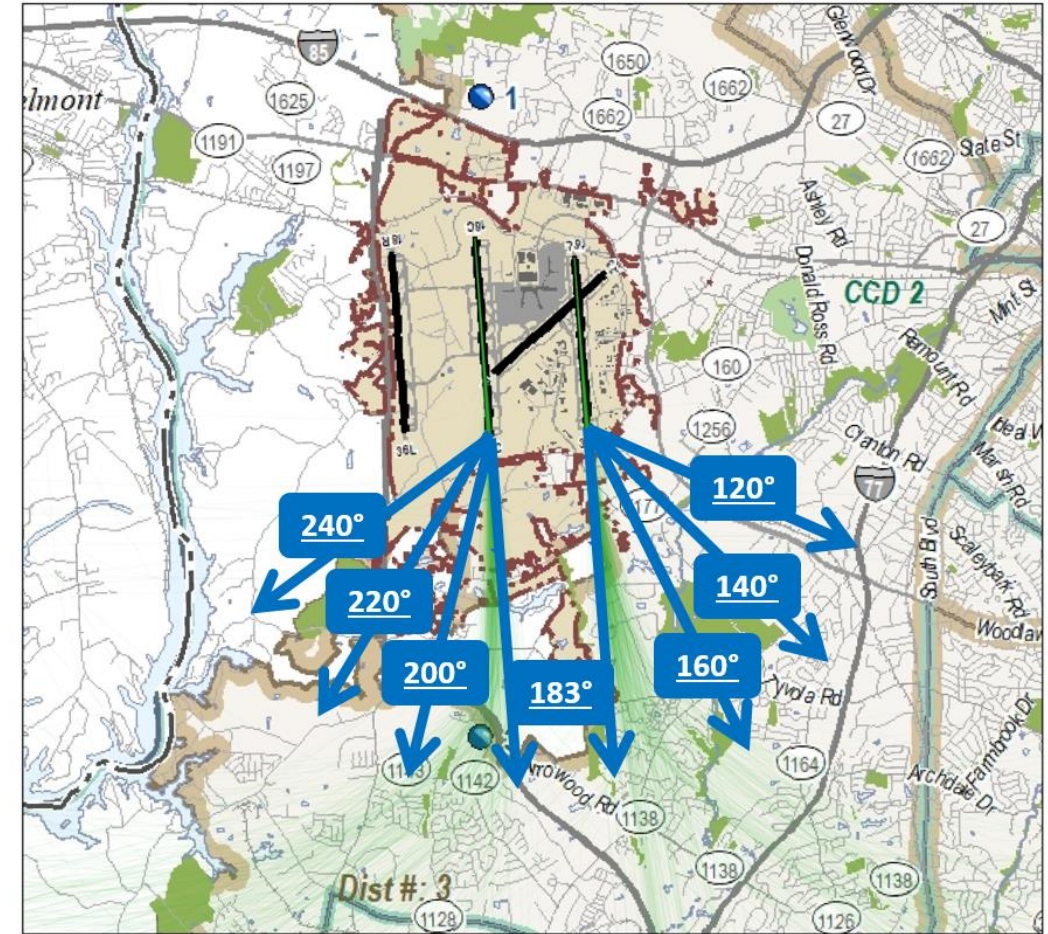
Divergent Departure Headings

- Proposal:

Assign departure heading based on destination

- Expected Results:

- Multiple departure flight paths rather than the majority of the aircraft flying over the same neighborhoods
- Fewer aircraft over any particular point on the ground
- More direct path to destination – time and fuel savings for aircraft operators



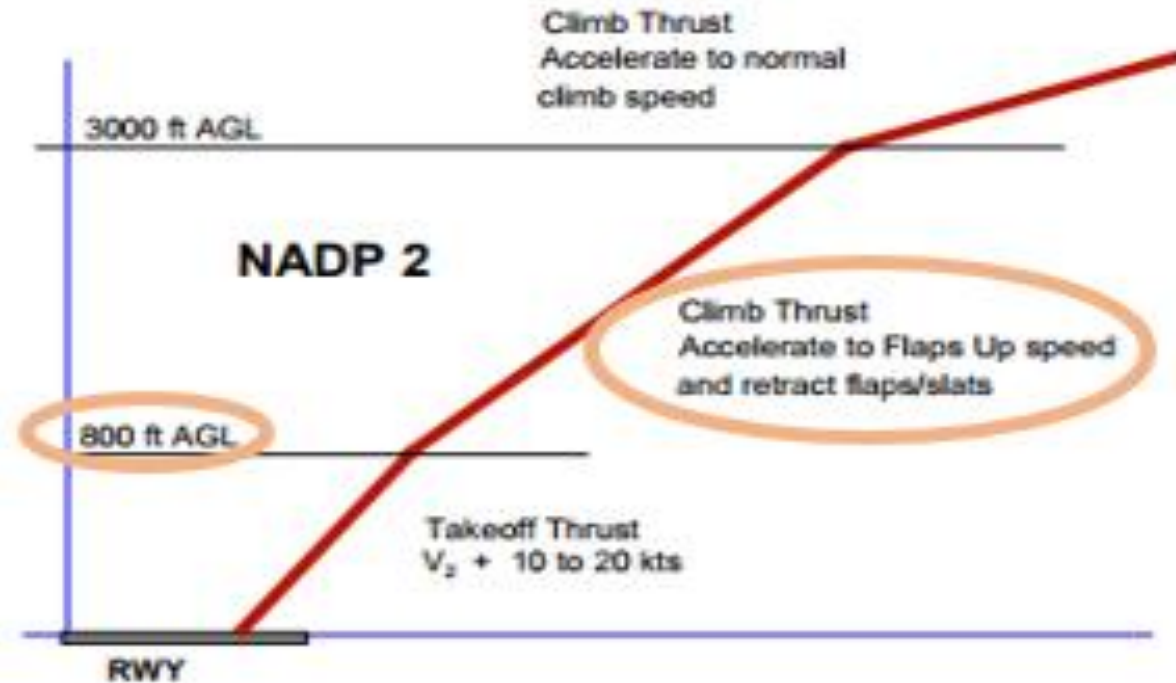
Noise Abatement Departure Procedures

- Proposal

Recommend aircraft operators use available noise abatement departure procedures

- Expected Results

- Reduce noise from aircraft departing CLT



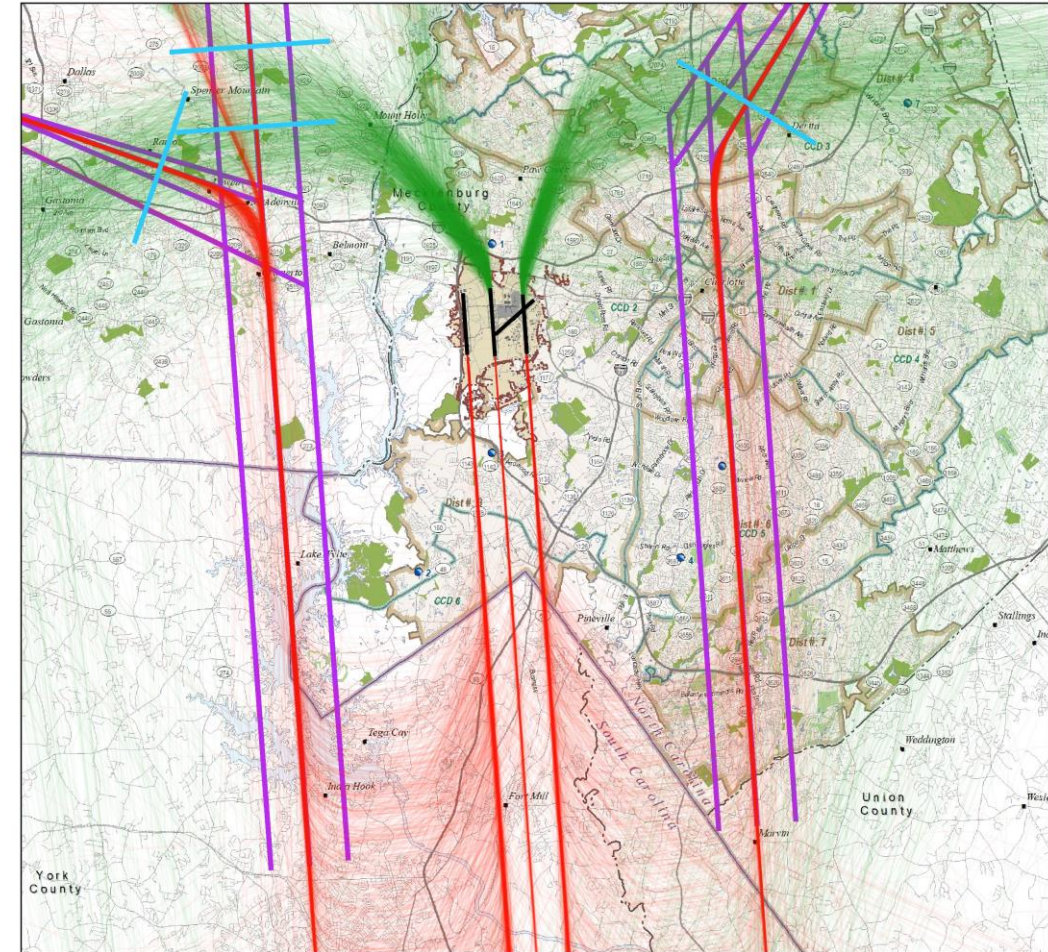
Alternating Downwind Arrival Headings

- Proposal:

Design and utilize three or four downwind arrival legs at varying distances from the Airport on a rotating schedule, e.g., annually assign the downwind leg

- Expected Results:

- Aircraft overflying different communities to provide relief from aircraft noise



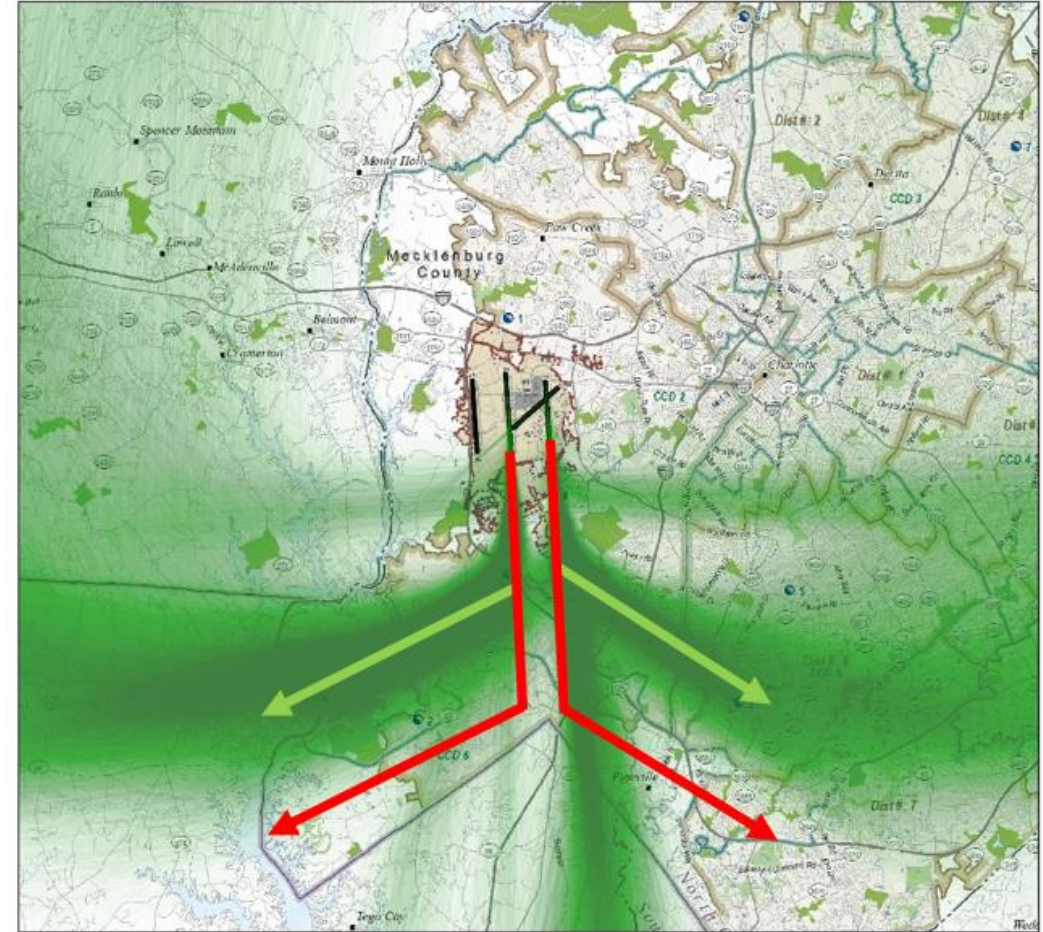
Delay Aircraft Turns After Departure

- Proposal:

Delay the initial turn after departure to allow the aircraft to climb higher before turning over communities

- Expected Results:

- To reduce noise levels from aircraft departures after they turn over communities



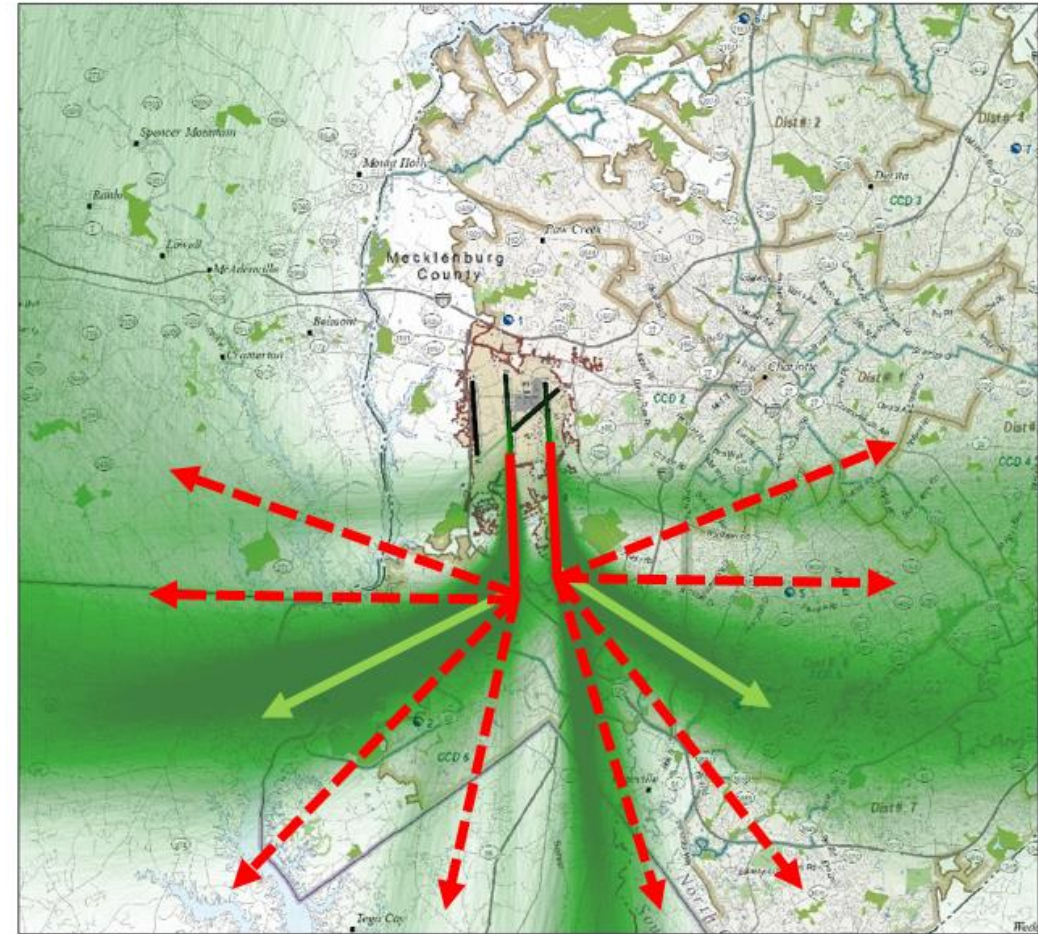
Alter Heading for Initial Turn after Departure

■ Proposal

Turn aircraft to a different heading after departure as was done prior to Metroplex

■ Expected Results

- Aircraft fly over communities they flew over prior to Metroplex or
- Fly over less densely populated areas



Other Ideas for 2019 ACR Slate

Plan is to settle on 2019 slate soon – Deliver slate to FAA by end of 2019

Note: This is the first slate for recommendation and should not be intended to be the only slate offered to the FAA for review.

