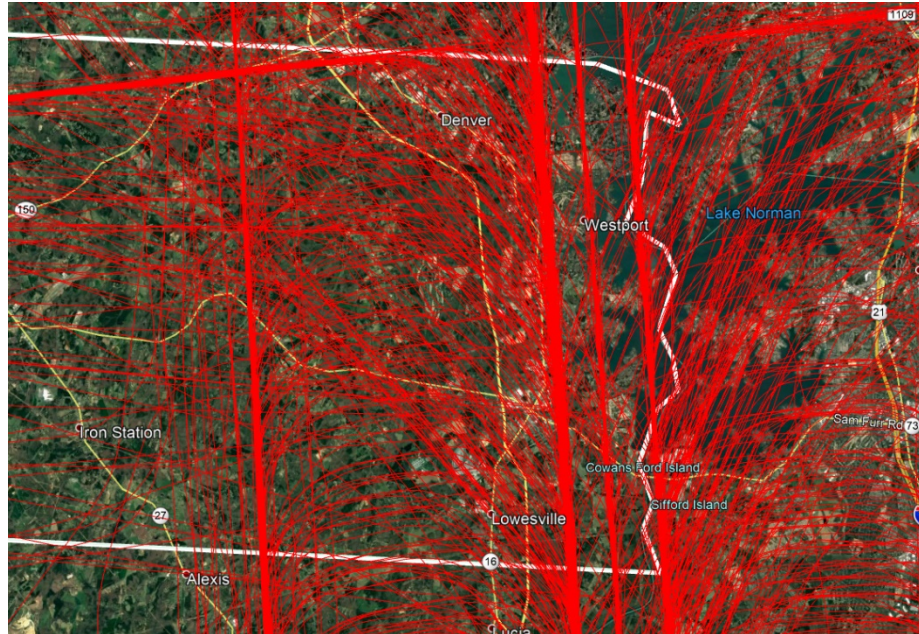


Charlotte Airport Community Roundtable

Possible Additions to ACR Membership

06/19/2019

Lincoln County is located 12 miles north of the Airport, and is affected by overflights from southbound arrivals. Currently the Airport receives a number of complaints from Denver and Iron Station on the eastern side of the county, and the region under the ILS for 18R is underrepresented on the ACR.



Tega Cay lies in the center of York County, but experiences overflights from the base leg of northbound arrival. This is somewhat similar to Mecklenburg County District 5, but this area is underrepresented on the west side of the Airport.

