

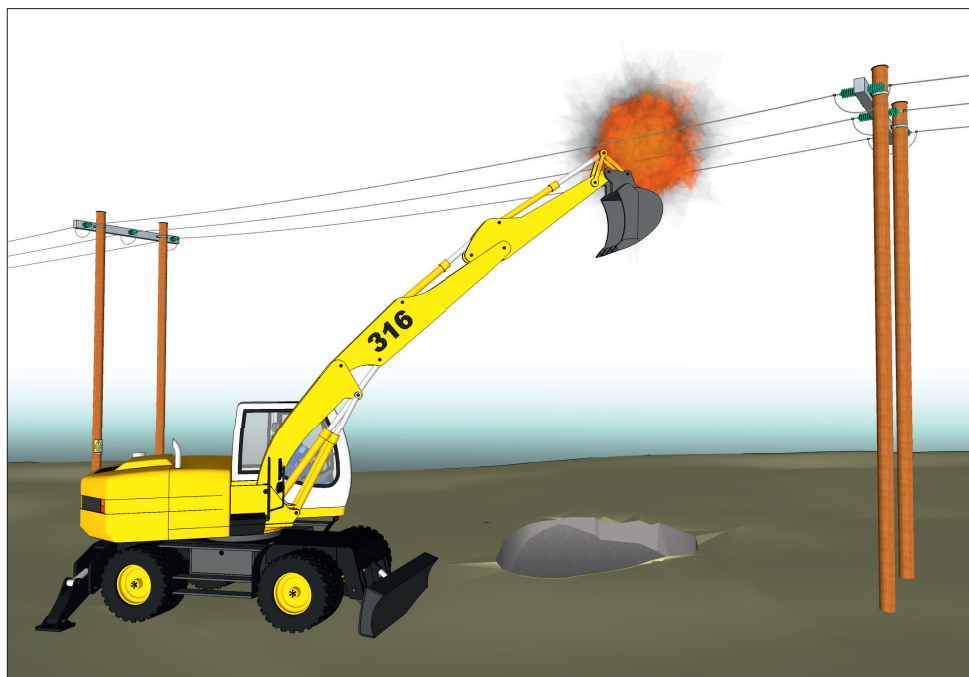
**Working  
close to power lines  
and cables is  
dangerous**



HØYSPENNING  
LIVSFARE

## Working close to power lines and cables is dangerous

### *Safety measures*



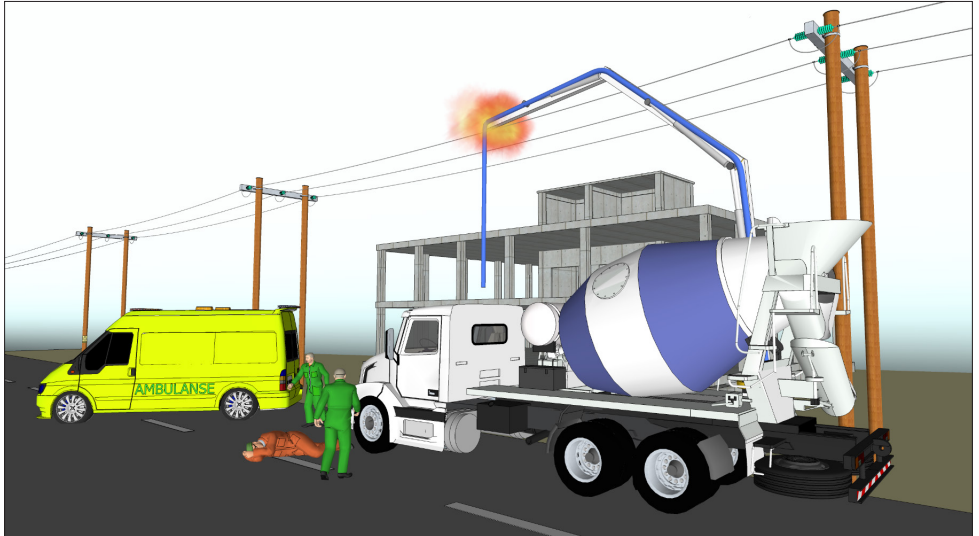
### **Construction work close to power lines**

If you work with construction and forestry machinery, transport or other equipment with a long reach, you must check if there are any power lines in the vicinity of the work site.



HØYSPENNING  
LIVSFARE

## Working close to power lines and cables is dangerous



**Power lines are dangerous even at a distance of several metres. Touching power lines and installations has resulted in many near accidents and tragic fatalities.**

If you are going to work closer than **30 metres to a power line**, the grid operator must be warned in advance so they can carry out an inspection and agree relevant safety measures. Contact information: see last page.

### ***Liability***

Damaging a grid operator's installations may result in liability for damages for:

- Losses due to interruptions to electricity supplies
- Repair costs

For example:

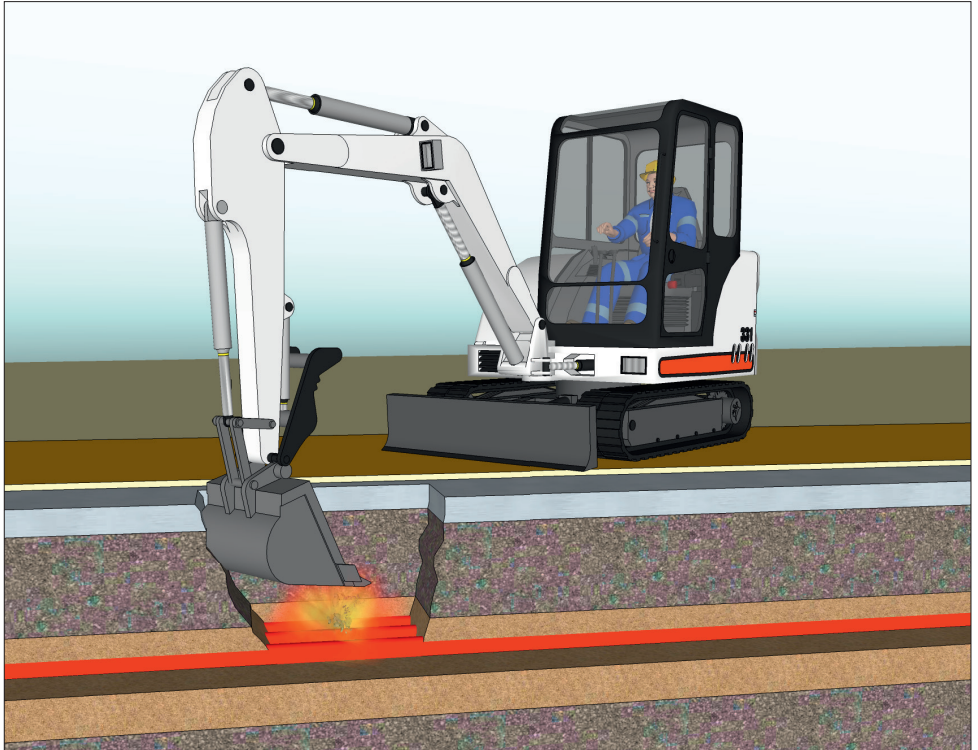
An excavator damages a power line in a residential area. The damage results in more than 100 customers being without electricity for an hour. The total costs will be around NOK 200,000.



HØYSPENNING  
LIVSFARE

## Working close to power lines and cables is dangerous

### *Safety measures*



### **Excavation, drilling and sheet piling**

Always check if there are cables in the ground where you are going to excavate or drill. Cable detection must always be carried out. The grid operator will provide this service free of charge.

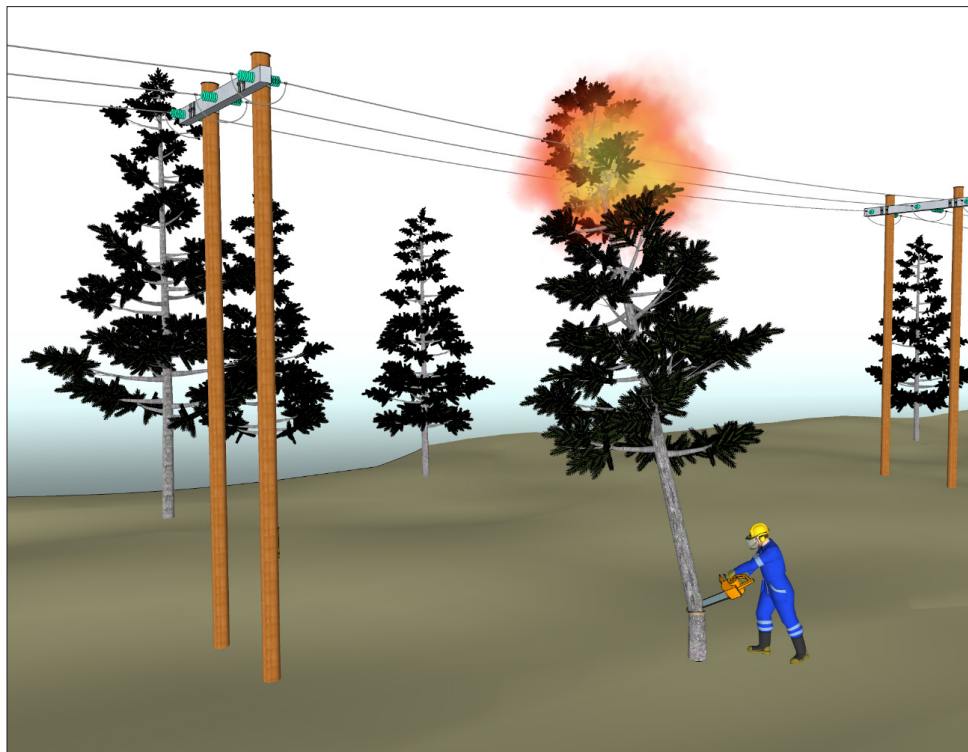
Contact information: see last.



HØYSPENNING  
LIVSFARE

## Working close to power lines and cables is dangerous

### *Safety measures*



### **Tree felling**

Always contact the grid operator and agree relevant safety measures before felling trees close to power lines.

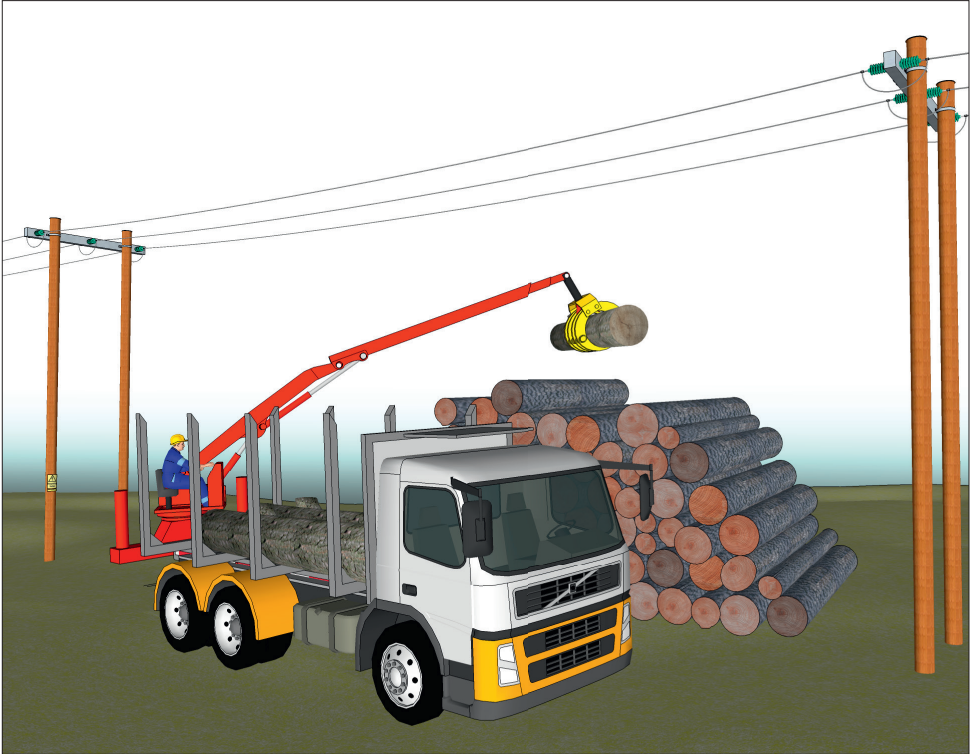
Contact information: see last.



HØYSPENNING  
LIVSFARE

## Working close to power lines and cables is dangerous

### *Safety measures*



### **Storing and using cranes**

The grid operator must be contacted for inspections and to agree relevant safety measures for equipment that is transported, stored and operated under and close to power lines.

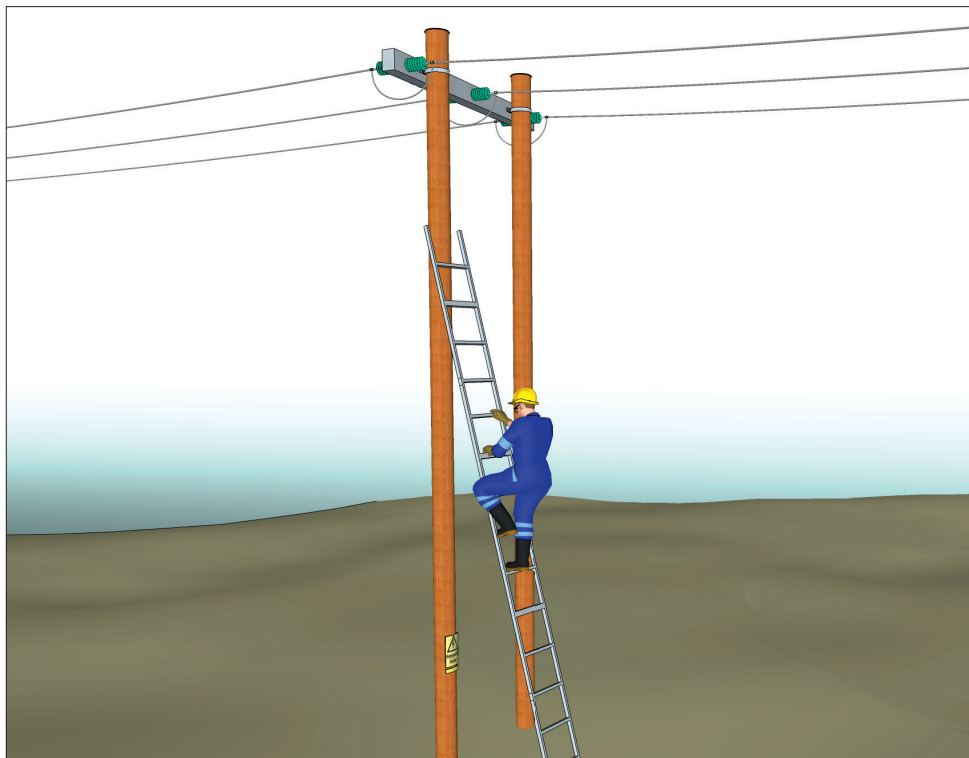
Contact information: see last page.



HØYSPENNING  
LIVSFARE

## Working close to power lines and cables is dangerous

### *Safety measures*



### **Climbing masts and movement within restricted areas**

Only personnel with safety clearance are allowed to climb masts or move inside restricted areas. The use of masts for other purposes such as signage or support, etc. is forbidden.

### **Contact Eidsiva Nett AS in case of:**

- Construction work close to power lines
- Excavation and drilling
- Tree felling close to power lines
- Storage and transport below or close to power lines

Book free cable detection on [www.eidsivanett.no](http://www.eidsivanett.no) under the menu item "Bygge, grave, trefelling".

Think safety first and contact Eidsiva Nett in connection with all of the activities mentioned here. If required, Eidsiva Nett will send an expert to safeguard the company's interests on the construction site. This will normally be an employee of Eidsiva Nett or one of the grid operator's regular contractors.

The grid operator's representative will assess safety measures, safe distances, and whether the grid operator needs to post its own safety leader during the work.

### **Contact information Eidsiva Nett:**

Customer service, phone: +47 61 28 66 62

Email contact: [kundeservice@eidsivanett.no](mailto:kundeservice@eidsivanett.no)

In case of accident, call Eidsiva Nettsentral on +47 61 28 88 58

Report the start-up and end of work close to power lines and cables via Geomatikk's app "Geograv" and in accordance with the routines stated on the cable detection form (applies to cable work).

Otherwise, please refer to the information provided by the grid operator's representative.

