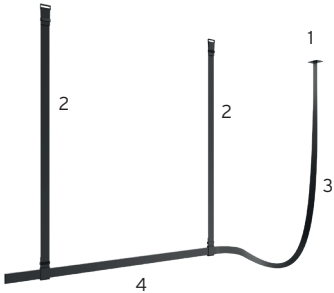




Surface Installation



- 1- Feed Semi-Recessed Box
- 2- Suspension strap.
- 3- Feed 48V Loop
- 4- Up&Down Light module

Certifications



Photometrics

For current IES files please visit
architectural.flosusa.com

Warranty

2 years from date of sale.

BELT

Suspended Light profile Designed by Ronan & Erwan Bouroullec

Description

This unique profile for suspended installation features a natural leather surface designed specifically for Flos Architectural.

Each profile is equipped with integral direct and indirect lighting which can be controlled independently via 0-10V, DALI and Casambi wireless control. The Suspension Feed loop and the the 2 suspension straps complete this impressive light fixture.

Profiles available with 2m - 6'-7" and 3m - 9'-10" lengths in black, natural leather, and green finishes.

Lamp

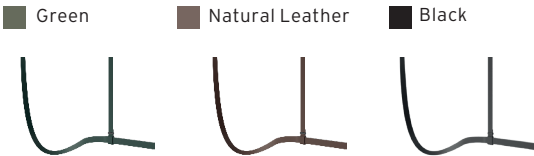
System Lamp Type	LED
Color Temperature	2700K, 3000K
Color Rendering	CRI95
Application	General Lighting

Physical

Material	Aluminum / Leather
Length	2m, 6.6ft - 3m, 9.1ft
Ingress Protection Rating	IP20
Installation type	Ceiling - Suspension
Environment	Indoor
Field cuttable	No

Finishes

Natural Leather:



Electrical & Control

Driver location	Remote
Driver Input Voltage	120V-277V
Driver Output Voltage	48V
Maximum Driver Wattage	96W - Class 2
Control	On fixture: Standard 0-10V dimming / DALI / Casambi





BELT

Suspended Light profile Designed by Ronan & Erwan Bouroullec

Notes



EC to supply site cabling from driver to J-box location. Drivers should be installed in a suitable UL enclosure in an accessible location.

Available with individually addressable DALI-Wireless circuitry, 0-10V (from 1% up to 100%) Dimming or Casambi.

Dimming modes use direct communication between the control and the integral board on the Belt fixture, therefore all drivers are non-dimming type.

4 components make this suspended product:

Surface / Wall Canopy:

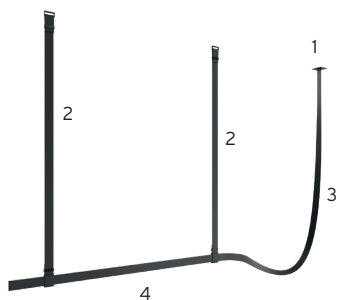
Feed Leather Loop: 4'-11" [1.5m] / 8'-2" [2.5m] / 11'-6" [3.5m]

Light Profile: 6'-7" [2m] / 9'-10" [3m]

Suspension straps: 3'-4" [1m] / 6'-7" [2m] / 9'-10" [3m]

3500K and other CCT available but not cataloged. Consult factory for additional color temperatures.

Surface Installation



1- Feed Semi-Recessed Box

2- Suspension strap.

3- Feed 48V Loop

4- Up&Down Light module

Certifications



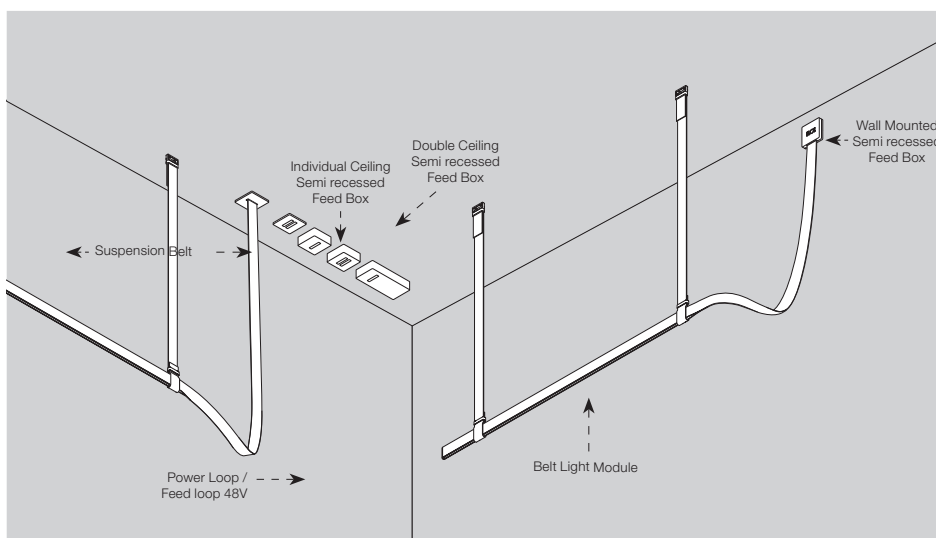
Photometrics

For current IES files please visit
architectural.flosusa.com

Warranty

2 years from date of sale.

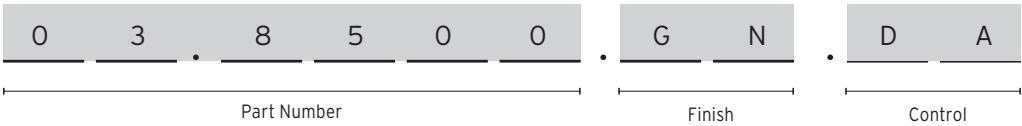
Surface Components



BELT

Suspended Light profile Designed by Ronan & Erwan Bouroullec

How to specify



Light Module

Electromechanical profile for interior use with integrated linear lighting for suspended installation available with 6'-7" [2m] or 9' -10" [3m] lengths. Installation via suspension straps on the ceiling and remote driver, to be ordered separately. Control system via 1-10V, DALI, or CASAMBI.



Length	Part Number	Finish	CCT	Initial Lumens UP	Initial Lumens DOWN	Delivered Lumens	Watts	CRI	Beam Spread	Control
78.7" (2000 mm)	03.8500	<div>GN = Green</div> <div>18 = Natural</div> <div>14 = Black</div>	2700	1010lm/m	2350lm/m	1961lm	58	95	52°	DA = Dali Version 1V = 1-10V (Broadcast) CB = Casambi Integrated
118" (3000 mm)	03.8501	<div>GN = Green</div> <div>18 = Natural</div> <div>14 = Black</div>	2700	1010lm/m	2350lm/m	2900lm	87			
Length	Part Number	Finish	CCT	Initial Lumens UP	Initial Lumens DOWN	Delivered Lumens	Watts	CRI	Beam Spread	Control
78.7" (2000 mm)	03.8505	<div>GN = Green</div> <div>18 = Natural</div> <div>14 = Black</div>	2700	1050lm/m	2450lm/m	1961lm	58	95	52°	DA = Dali Version 1V = 1-10V (Broadcast) CB = Casambi Integrated
118" (3000 mm)	03.8506	<div>GN = Green</div> <div>18 = Natural</div> <div>14 = Black</div>	2700	1050lm/m	2450lm/m	3000lm	87			

BELT

Suspended Light profile Designed by Ronan & Erwan Bouroullec

Installation components

Table with 3 columns: Individual Semi Recessed ceiling feed box, Double Semi Recessed ceiling feed box, Wall mounted Semi Recessed feed box. Each column includes Part Number and a 3D diagram of the component.

Suspension strap.

Suspension Straps available in 3 different lengths. 2 units included.

Diagram and list of suspension strap options with lengths and part numbers.

48-V power loop.

Feed Suspension Loop available in 3 different lengths.

Diagram and list of 48-V power loop options with lengths and part numbers.

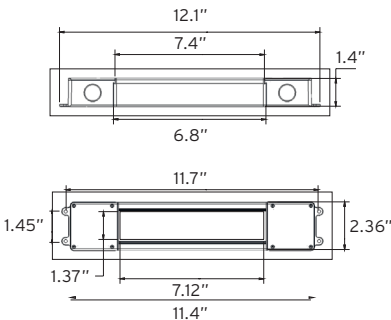
BELT

Suspended Light profile Designed by Ronan & Erwan Bouroullec

Required Drivers

LED power supply source for remote installation, 48V/96W, 120-277V, UL Listed

Part Number:
LEDSB96W48V-NDM-D01



LED power supply source for remote installation, 24V/60W, 120-277V, UL Listed

Part Number:
LEDSB60W24V-NDM-D01

