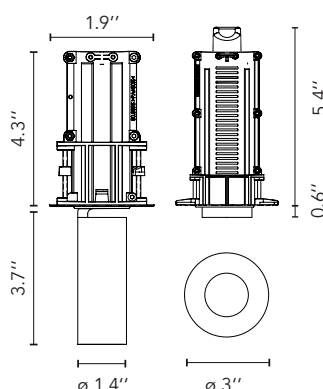




Dimensions



Certifications



Photometrics

For current IES files please visit
arch.flosusa.com

Warranty

2 years from date of sale.

Find Me 1 Monopoint

Ceiling Recessed Trimmed / Trimless Adjustable Spotlight

Description

Hide-and-go-seek brought to light. The versatile Find Me is a tiny semi-recessed downlight hidden in the ceiling until otherwise sought. With a simple pull, the downlight can extend below the ceiling and transform into a refined cylindrical monopoint. This diminutive yet powerful luminaire is endlessly versatile and can tilt 90 degrees and rotate 360 degrees. Deep matte black snoot maximizes cut off and reduces glare. The Find Me line is available in a single version with or without trim and in a pendant version.

Lamp

| | |
|-------------------|---------------------------------|
| Lamp Type | LED |
| Wattage | 6W |
| Output Nominal | 500lm, 560lm |
| Color Temperature | 2700K, 3000K 3500K* (See Notes) |
| Color rendering | CRI 90 |

Optical

| | |
|--------------------|-----------|
| Beam Angle | 14° |
| Lighting Type | Direct |
| Light Distribution | Symmetric |

Physical

| | |
|---------------------------|-----------------|
| Material | Aluminum |
| Aiming | Adjustable |
| Weight | 0.5 Lbs |
| Ingress Protection Rating | IP20 |
| Maximum tilt Angle | 70° |
| Rotation | 360° |
| Finishes | Painted lacquer |

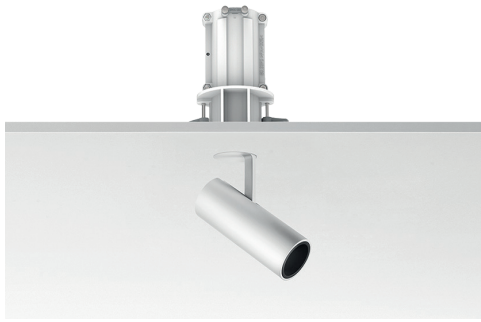
☐ 30 White

☒ 06 Chrome

☐ 14 Black



| | |
|---------------------------|-------------------------|
| Installation type | Ceiling Trim / Trimless |
| Environment | Indoor |
| Minimum Plenum height | 6" |
| Maximum Ceiling thickness | 1.18" |



Find Me 1 Monopoint

Ceiling Recessed Trimmed / Trimless Adjustable Spotlight

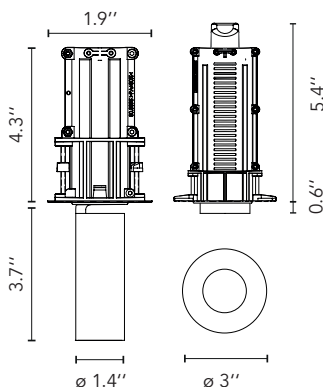
Electrical & Control

| | |
|----------------------|-----------|
| driver location: | Remote |
| Driver Input Voltage | 120V-277V |
| Fixture Vf | 13V |
| Current mA | 500mA |
| Control | 0-10V |

Performance

| | |
|--------------------------|---------------------|
| Maximum delivered output | From 344lm to 365lm |
| Efficacy | 63lm/W |

Dimensions



Notes

Integral LED is not field replaceable.

IC-rated downlight for direct insulation contact.

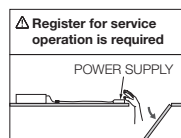
Fixture is constant Current Low Voltage LED, Class 2.

Just 1 accessory can be install at the time. For filter options contact Flos.

Wiring suitable for plenum spaces.

Maximum remote distance is 50ft with 16ga.

3500K available, but not cataloged. Consult factory for additional color temperatures.



Certifications



Photometrics

For current IES files please visit
arch.flosusa.com

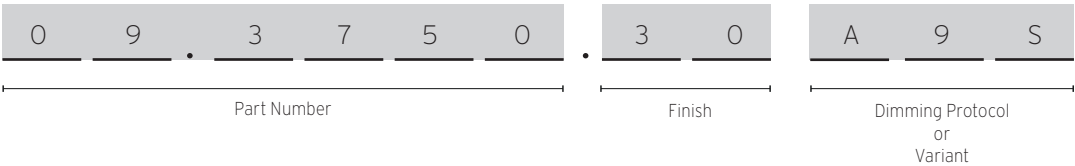
Warranty

2 years from date of sale.

Find Me 1 Monopoint

Ceiling Recessed Trimmed / Trimless Adjustable Spotlight

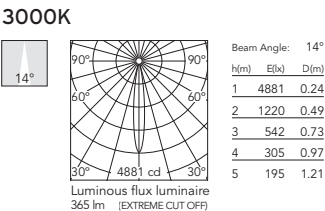
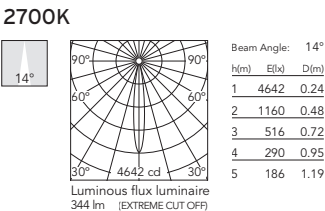
How to specify



How to Specify ex. 09.3750.30A9S + SP40W500MA-10V-A02

| Part Number | CCT | CRI | Initial Lumens | Delivered Lumens | Watts | Beam Angle | Finish | Dimming Protocol |
|-------------|------|-----|----------------|------------------|-------|------------|--|---------------------------|
| 09.3750 | 3000 | 90 | 600 | 365 | 6W | 14° | <div>30 = White</div> <div>14 = Black</div> <div>06 = Chrome</div> | A9S = Remote Power Supply |
| 09.3751 | 2700 | 90 | 560 | 344 | 6W | 14° | | |

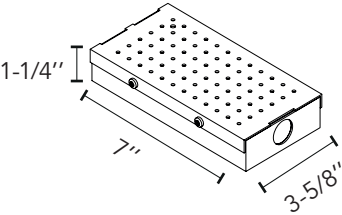
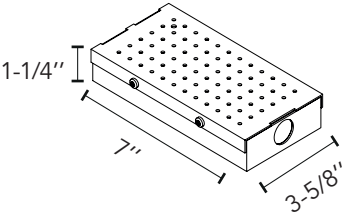
Photometrics



Find Me 1 Monopoint

Ceiling Recessed Trimmed / Trimless Adjustable Spotlight

Required Splice Box

| | | |
|---|---|--|
| Splice Box UL 7"x3-5/8"x1-1/4", UL. With Driver Programmed to to 500mA, 40W, 0-10V Dimmable, 120/277V | Splice Box UL 7"x3-5/8"x1-1/4", UL. With Driver Programmed to 250mA , 25W, 0-10V Dimmable, 120-277V / Required for Canada | |
| SP40W500MA-10V-A02 | SP25W250MA-10V-A01 | |
|  |  | |