

Designed by Flos Outdoor

Klein Pro

DEUTSCH / ENGLISH

FLOS
Outdoor

Klein Pro

Designed by Flos Outdoor







Klein Pro

Klein Pro



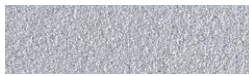
Power Led

11W
294 lm - 2700K/CRI 80
304 lm - 3000K/CRI 80
325 lm - 4000K/CRI 80

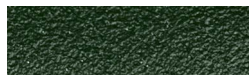
Ausführungen / Colours



01 White



06 Grey



12 Forest Green



18 Deep Brown



30 Black



33 Anthracite



70 Anodized Natural



71 Anodized Black



73 Anodized Gold*

* Nur für Schirmstange. / Only for pole screen.

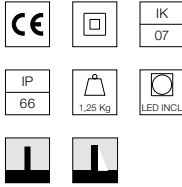
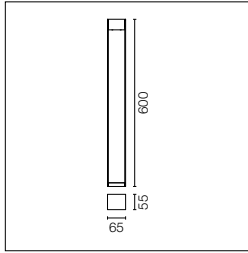
Beschreibung / Description

Der Körper des Klein Pro Pollers besteht aus strangengepresstem Aluminium, der Boden und der Diffusor aus Aluminium-Druckguss EN AB-47100 mit niedrigem Kupfergehalt. Hochbeständige Beschichtung: wird die Außenbeschichtung mit einer doppelten Schicht Epoxidpulver nach dem QUALICOAT-Standard aufgetragen. Die erste Schicht aus Epoxidpulver sorgt für chemische und mechanische Beständigkeit, die zweite Schicht aus Polyesterpulver sorgt für Beständigkeit.

Auch mit eloxiertem Finish erhältlich. Klein Pro ist kompatibel mit der vorhandenen "Klein" -Befestigungsplatte.

The body of Klein Pro bollard is made of extruded aluminium, base and diffuser in die-cast aluminium EN AB-47100 with a low copper content.

High-resistance coating: the external coating is applied with a double layer with epoxy powders according to the QUALICOAT standard. The first layer of epoxy powder gives chemical and mechanical resistance, the second finishing layer of polyester powder ensures resistance. Also available in anodized finishes.



220 / 240V Netzteil integriert.
Feste Oberfläche oder Bodeninstallationszubehör müssen separat bestellt werden. Jede Leuchte ist mit einem 1000 mm langen Abgangskabel und einem Verdrahtungskit ausgestattet.

220-240V power supply integrated. Solid surface or ground installation accessories to be ordered separately. Each luminaire is equipped with 1000 mm length outgoing cable and a wiring kit.

Power Led: 11W - 1089 lm ≠ FIXT 294 lm - 2700K/CRI 80 - 220-240V / 11W - 1126 lm ≠ FIXT 304 lm - 3000K/CRI 80 - 220-240V / 11W - 1211 lm ≠ FIXT 325 lm - 4000K/CRI 80 - 220-240V

2700K

Non Dimmable

- F002A20A001.B
- F002A20A006.B
- F002A20A012.B
- F002A20A018.B
- F002A20A030.B
- F002A20A033.B
- F002A21A070.B
- F002A21A071.B

1-10V

- F002A20B001.B
- F002A20B006.B
- F002A20B012.B
- F002A20B018.B
- F002A20B030.B
- F002A20B033.B
- F002A21B070.B
- F002A21B071.B

Dali

- F002A20D001.B
- F002A20D006.B
- F002A20D012.B
- F002A20D018.B
- F002A20D030.B
- F002A20D033.B
- F002A21D070.B
- F002A21D071.B

3000K

Non Dimmable

- F002A30A001.B
- F002A30A006.B
- F002A30A012.B
- F002A30A018.B
- F002A30A030.B
- F002A30A033.B
- F002A31A070.B
- F002A31A071.B

1-10V

- F002A30B001.B
- F002A30B006.B
- F002A30B012.B
- F002A30B018.B
- F002A30B030.B
- F002A30B033.B
- F002A31B070.B
- F002A31B071.B

Dali

- F002A30D001.B
- F002A30D006.B
- F002A30D012.B
- F002A30D018.B
- F002A30D030.B
- F002A30D033.B
- F002A31D070.B
- F002A31D071.B

4000K

Non Dimmable

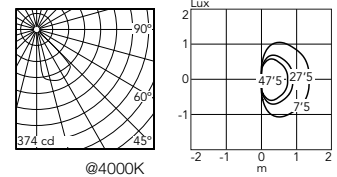
- F002A40A001.A
- F002A40A006.A
- F002A40A012.A
- F002A40A018.A
- F002A40A030.A
- F002A40A033.A
- F002A41A070.A
- F002A41A071.A

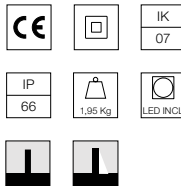
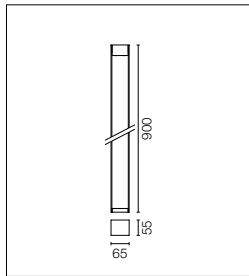
1-10V

- F002A40B001.A
- F002A40B006.A
- F002A40B012.A
- F002A40B018.A
- F002A40B030.A
- F002A40B033.A
- F002A41B070.A
- F002A41B071.A

Dali

- F002A40D001.A
- F002A40D006.A
- F002A40D012.A
- F002A40D018.A
- F002A40D030.A
- F002A40D033.A
- F002A41D070.A
- F002A41D071.A





220 / 240V Netzteil integriert.
Feste Oberfläche oder Bodeninstallationszubehör müssen separat bestellt werden. Jede Leuchte ist mit einem 1000 mm langen Abgangskabel und einem Verdrahtungskit ausgestattet.

220-240V power supply integrated. Solid surface or ground installation accessories to be ordered separately. Each luminaire is equipped with 1000 mm length outgoing cable and a wiring kit.

Power Led: 11W - 1089 lm ≠ FIXT 294 lm - 2700K/CRI 80 - 220-240V / 11W - 1126 lm ≠ FIXT 304 lm - 3000K/CRI 80 - 220-240V / 11W - 1211 lm ≠ FIXT 325 lm - 4000K/CRI 80 - 220-240V

2700K

Non Dimmable

- F002B20A001.B
- F002B20A006.B
- F002B20A012.B
- F002B20A018.B
- F002B20A030.B
- F002B20A033.B
- F002B21A070.B
- F002B21A071.B

1-10V

- F002B20B001.B
- F002B20B006.B
- F002B20B012.B
- F002B20B018.B
- F002B20B030.B
- F002B20B033.B
- F002B21B070.B
- F002B21B071.B

Dali

- F002B20D001.B
- F002B20D006.B
- F002B20D012.B
- F002B20D018.B
- F002B20D030.B
- F002B20D033.B
- F002B21D070.B
- F002B21D071.B

3000K

Non Dimmable

- F002B30A001.B
- F002B30A006.B
- F002B30A012.B
- F002B30A018.B
- F002B30A030.B
- F002B30A033.B
- F002B31A070.B
- F002B31A071.B

1-10V

- F002B30B001.B
- F002B30B006.B
- F002B30B012.B
- F002B30B018.B
- F002B30B030.B
- F002B30B033.B
- F002B31B070.B
- F002B31B071.B

Dali

- F002B30D001.B
- F002B30D006.B
- F002B30D012.B
- F002B30D018.B
- F002B30D030.B
- F002B30D033.B
- F002B31D070.B
- F002B31D071.B

4000K

Non Dimmable

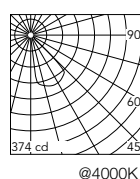
- F002B40A001.A
- F002B40A006.A
- F002B40A012.A
- F002B40A018.A
- F002B40A030.A
- F002B40A033.A
- F002B41A070.A
- F002B41A071.A

1-10V

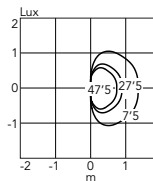
- F002B40B001.A
- F002B40B006.A
- F002B40B012.A
- F002B40B018.A
- F002B40B030.A
- F002B40B033.A
- F002B41B070.A
- F002B41B071.A

Dali

- F002B40D001.A
- F002B40D006.A
- F002B40D012.A
- F002B40D018.A
- F002B40D030.A
- F002B40D033.A
- F002B41D070.A
- F002B41D071.A



@4000K



Klein Pro: Zubehörteile / Accessories

Befestigungsbasis für feste Oberflächen.

Fixing base for solid surfaces.

- F002Z010001.A
- F002Z010006.A
- F002Z010012.A
- F002Z010018.A
- F002Z010030.A
- F002Z010033.A



Minimal Klein Pro Bodenplatte, 47x57xH160 mm.

Minimal Klein Pro ground fixation plate, 47x57xH160 mm.

F002Z030000.A



Bodenverankerungsplatte und Schwellenschrauben, Klein Pro 85x85xH160 mm.

Klein Pro base plate and fixing bolts 85x85xH160 mm.

F002Z020000



Eloxiertes ästhetisches Pfostengitter.

Anodized aestetical pole screen.

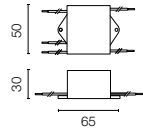
- H 600 mm
- F002Z040070
- F002Z040071
- F002Z040073
- H 900 mm
- F002Z050070
- F002Z050071
- F002Z050073



Überspannungsschutzgerät. 275 Vac. Maximaler Entladestrom 10KA (8 / 20us). Maximaler Betriebsstrom 5A. Geeignet für Reihenschaltung. IP66.

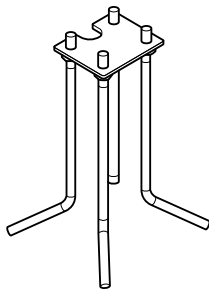
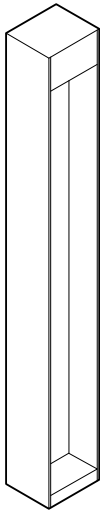
Surge protection device. 275Vac. Maximum discharge current 10KA (8/20us). Maximum operating current 5A. Suitable for series connection. IP66.

F990E00A000

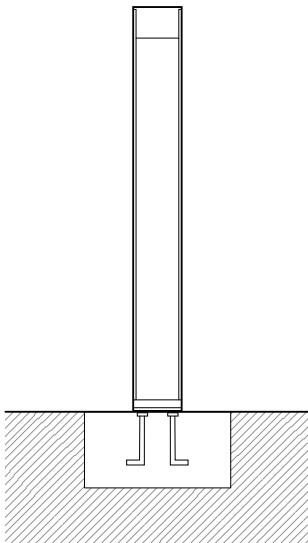


Installationsoptionen / Installation Options

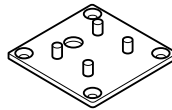
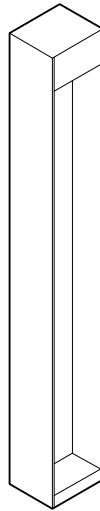
Option 1
Mit Schwellenschrauben /
Fixing anchor bolts



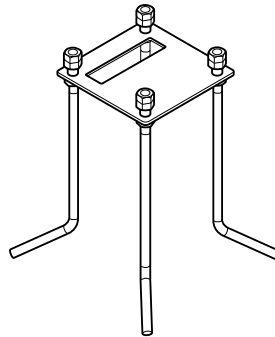
cod. F002Z030000.A



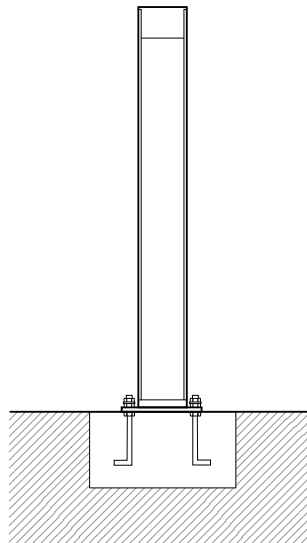
Option 2
Mit Basis und Schwellenschrauben /
With base and fixing anchor bolts



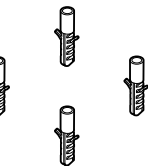
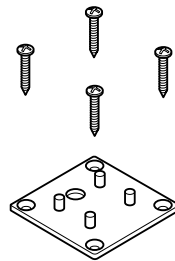
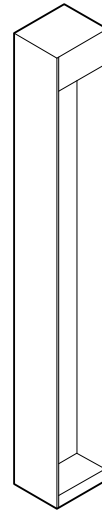
cod. F002Z0100.A



cod. F002Z020000



Option 3
Befestigungsbasis mit Dübel (nicht im
Lieferumfang enthalten) /
With base for bolts (not included)



cod. F002Z0100.A

