

Bon Jour 145

Ceiling Recessed Fixed Downlight

Description

LED luminaire for recessed mounting into plasterboard ceilings.

Once installed, the luminaire edge projects from of the ceiling 0.39" creating a unique and very refined aesthetic effect. The luminaire's body is injection molded aluminium.

It is available in three sizes: Bon Jour 45 (Ø 1.77"), 90 (Ø 3.54") and 145 (Ø 5.71"). Reflector made of anodized gloss aluminium with diffuser element made of polycarbonate. Available finishes: white, copper and black.

Lamp

Lamps Type	LED ARRAY
Wattage	36W
Output Nominal	3847 lm, 3840 lm
Color Temperature	2700K, 3000K
Color rendering	CRI90

Optical

Beam Angle	57° , 55° , 49°
Lighting Type	Direct
Light Distribution	Diffuse

Physical

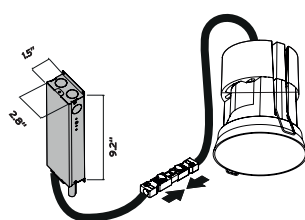
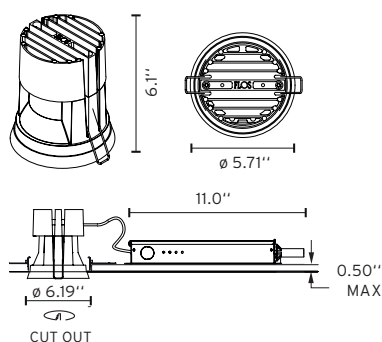
Material	Aluminium (Body) / Polycarbonate (difuser)
Aiming	Fixed
Weight	1,16 lb
Ingress Protection Rating	IP44

Finishes

☐ 01 White ☒ CU Copper ☐ 14 Black



Dimensions



Certifications



Photometrics

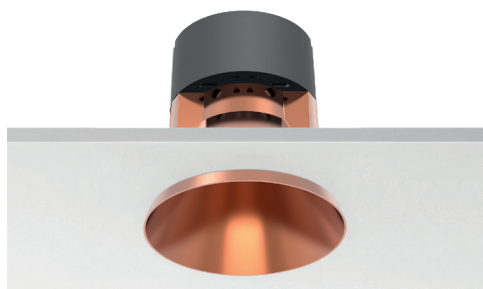
For current IES files please visit architectural.flosusa.com

Warranty

2 years from date of sale.

FLOS. USA
36 East 31st Street
Suite 402
New York N.Y. 10016
(800) 841.4011

Installation type	Ceiling Recessed Non IC
Environment	Indoor



Bon Jour 145

Ceiling Recessed Fixed Downlight

Electrical & Control

Voltage 120/277V, Low voltage LED

Control Dimmable 0-10V

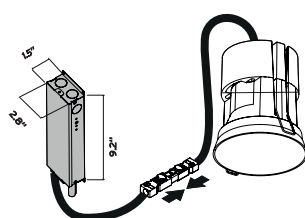
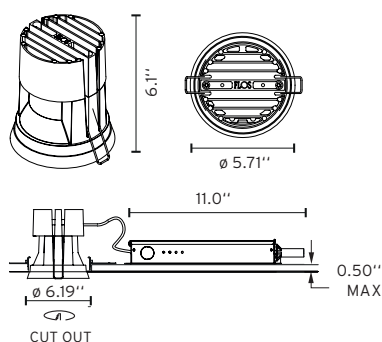
Performance

Delivered lumens from 695 lm up to 1530 lm

Efficacy 43 lm/W

Notes

Dimensions



Installation frame made from thermoplastic material for installation in plasterboard ceilings required to be ordered separately.

Luminaire body made of die cast aluminium. Reflector made of anodized gloss aluminium with diffuser element made of polycarbonate.

Honeycomb and cross screening cylinder available to be ordered separately.

Embedded luminaire for LED light source. Remote 120/277V "integral" LED power supply included.

Requires pre-installation frame ring, must be ordered separately.

Factory suggests 10" minimum plenum height.

Listings: UL Listed, IP44 damp location.

Certifications



Class 2

Photometrics

For current IES files please visit architectural.flosusa.com

Warranty

2 years from date of sale.

FLOS. USA
36 East 31st Street
Suite 402
New York N.Y. 10016
(800) 841.4011

For more information contact your representative or go to architectural.flosusa.com
©2023 Specifications and dimensions subject to change without notice. Issued 09.05.2023

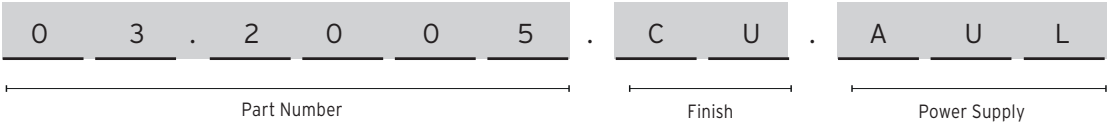


Bon Jour 145

Ceiling Recessed Fixed Downlight

Fixture Type
Job Name

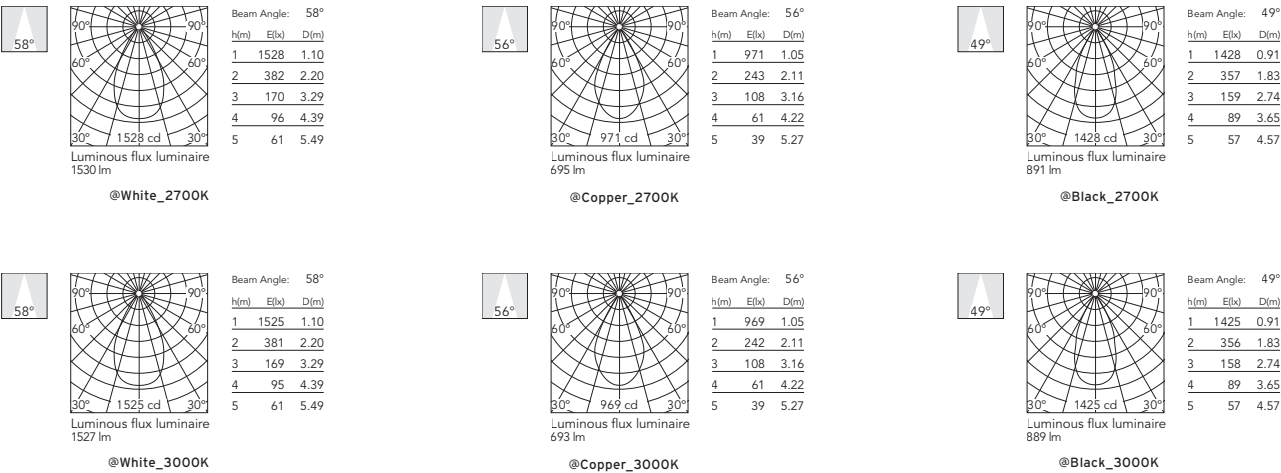
How to specify



How to Specify ex. 03.2005.CU.AUL

QTY	Item Number	Beam Angle	Description	Finish	Power Supply
	03.2005	57° 55° 49°	Bon Jour 145, LED, 36W, 3847lm, 2700K, CRI 90	<div><div></div> 01 = White <div></div> 14 = Black <div></div> CU = Cooper</div>	AGT = Splice Box, 10% dim, ELV, 120V AUL = Splice Box, 1% dim, 0-10V, 120V A7U = Splice Box, 1% dim, 0-10V, 277V
	03.2008	57° 55° 49°	Bon Jour 145, LED, 36W, 3840lm, 3000K, CRI 90	<div><div></div> 01 = White <div></div> 14 = Black <div></div> CU = Cooper</div>	AGT = Splice Box, 10% dim, ELV, 120V AUL = Splice Box, 1% dim, 0-10V, 120V A7U = Splice Box, 1% dim, 0-10V, 277V

Photometrics



Bon Jour 145

Ceiling Recessed Fixed Downlight

Fixture Type

Job Name

Required Accessories

Installation Frame ring until 1" ceiling thickness

Part Number:

08.8975.00



Otional Accessories

Cross baffle + Honeycomb

Part Number:

08.8980.14



Decorative crown transparent

Part Number:

08.8977.00



Otional Accessories

Decorative crown yellow accessory

Part Number:

08.8978.00



Decorative crown soft accessory

Part Number:

08.8979.00



Registration tray -non electrical, place holder for non IC new construction, ø 6.19"

Part Number:

TRAY-0007

