



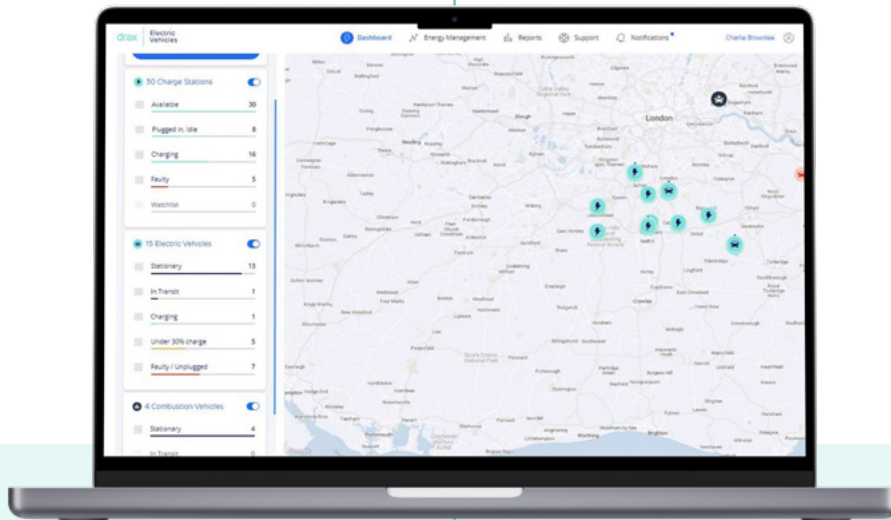
# My Electric Vehicles

Unrivalled insight and control

**My Electric Vehicles** is our market-leading web portal for fleet, facilities and energy managers. Use it to manage your charging infrastructure – or mobilise its full potential by unifying your charge station, fleet and site energy consumption data.



## One portal...



## ...three views



### Charge station management

See the location, availability, performance and status of your EV charge stations



### Vehicle management

Use telematics to track your fleet in real time and deal with issues before they happen



### Energy management

Explore your EV operation's energy use within the context of your sites' consumption



# Features

My Electric Vehicles' interactive map helps users track their vehicle and charge station assets in real time. Its Reports section enables unparalleled insight by vehicle, charge station and site.

The result? An easier way to track your EV operations, react to developments, and prove the financial and sustainability value your investment delivers.



## 1. Interactive, real-time dashboard map with topline data visibility

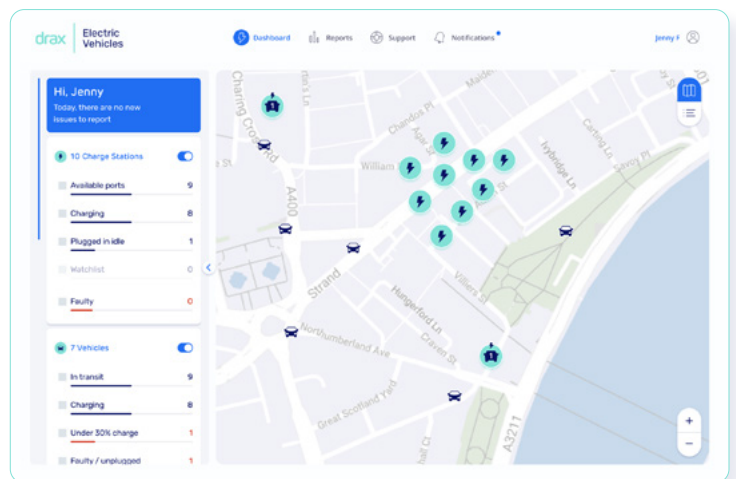
View the status of your charge stations – and the locations of your EVs and petrol/diesel vehicles from telematics data - all on the same dashboard.

### At a glance, check:

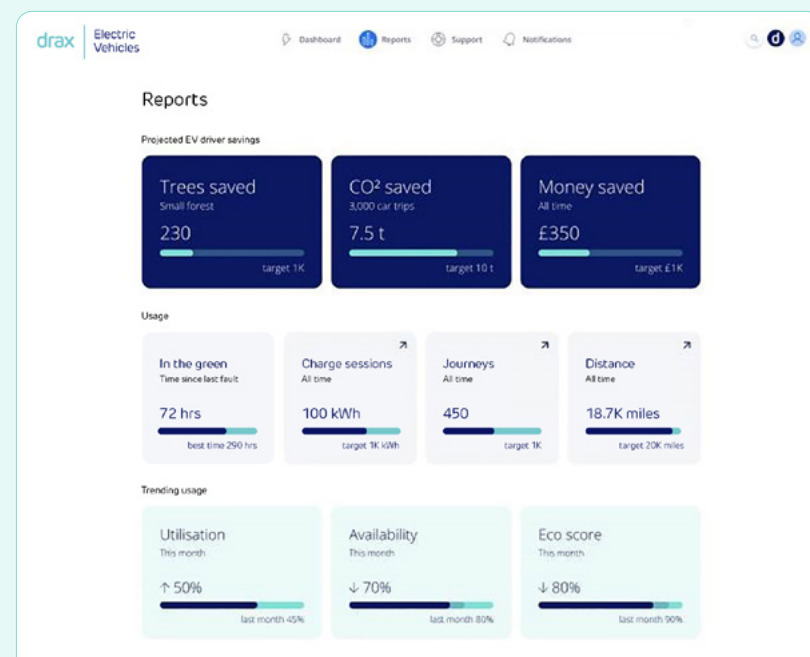
- Vehicle charge levels and remaining range
- Charge station location, availability, charging speed and status

### Select an icon to see:

- Vehicle total mileage and efficiency data
- Charge station port status, address and utilisation statistics



## 2. Headline fleet data and customisable reports



See reporting data for your fleet's monetary and carbon savings. (Drax energy-supply customers can also view topline energy savings.) Or drill down to manage your vehicles or charge stations individually, and to identify opportunities for optimising efficiencies.

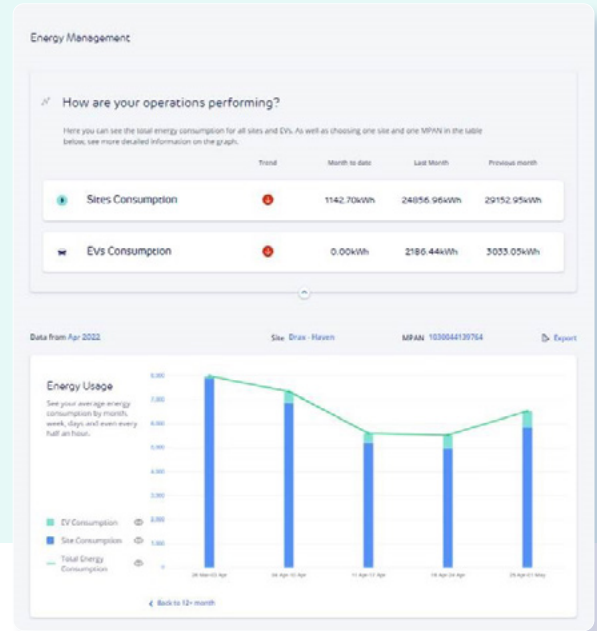
Create your own reports and export them for offline analysis and proof of environmental and cost savings.



### 3. Energy consumption insights

If you're a Drax customer, you'll be able to see your overall energy use by site as well as your charging infrastructure's consumption. View and download monthly, weekly, daily and even half-hourly data.

Understanding the difference between site and EV use – the spare capacity or 'headroom' – can help you plan for future charging expansion.



**Notifications** 22.05.2023

DRAX CUSTOMERS / HQ 2	Faulty	Drax Notified	10:50	
EO69HND	Faulty	Contact Driver	12:43	
EO69HND	Faulty	Driver Notified	12:43	
EO69HND	Driver Contacted	Mark as seen	Delete	12:50



### 4. Live notifications for issue identification and status management

Messages about charge station faults keep you aware of your infrastructure's status and reassure you that Drax is working to fix the issue.

Notifications of EV faults mean you can contact the driver to discuss immediate correction or to schedule maintenance. Mark notifications as 'seen', or 'Driver contacted', so the rest of your team knows you're taking action.

## Get in touch

To find out more about My Electric Vehicles or the Drax Electric Vehicles end-to-end partnership approach, contact us using the details below.



0345 646 1630



electric.vehicles@drax.com

