

tiney's

Educational Philosophy



tiney

At tiney, we believe...

The Early Years are a special and uniquely important time of life

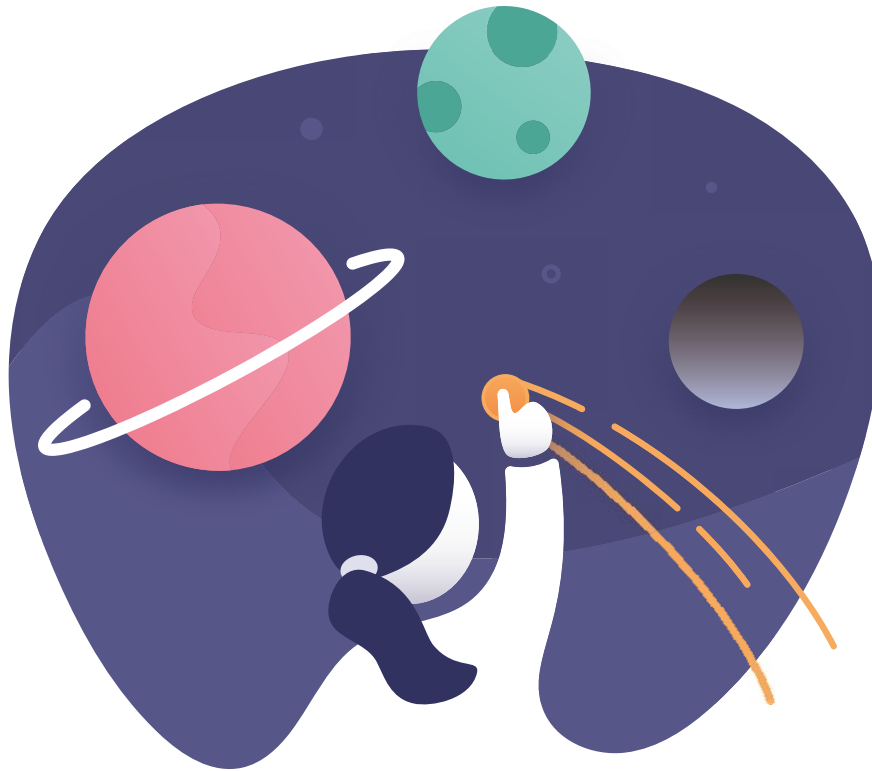
A great early education can be life changing. At no other time is learning and development so dramatic, and in no other phase can you have such a profound impact on a child's development and their long term educational outcomes.

Young children are remarkable and their imagination is astounding. Rather than fixating on the things they can't do, tiney home leaders pay attention to the remarkable capacities young children have for learning, imagination, fun, generosity, boldness and directness and seek to encourage and nurture these qualities.

The foundations for future learning are laid in early childhood. Certain basic skills must be developed in early childhood to enable future learning. These 'executive function' skills enable children to focus their attention, hold information in their working memory, and set priorities and control their impulses. Tiney home leaders are trained to ensure that their relationships and interactions with children foster these crucial skills.

Increasing access to a great early education makes societies stronger and fairer. Children from the most disadvantaged backgrounds have the most to gain from a fantastic early education. At tiney, we are committed to unlocking the potential of all children and ensuring that our home nurseries are accessible to the most vulnerable families in society. Tiney home nurseries are more affordable and more flexible than nurseries. They are accessible to a broader range of families and fit with a broader range of personal and professional circumstances.





At tiney, we believe...

A great early education is holistic, inclusive and tailored to each child

All children are unique. Tiney home leaders tailor their curriculum to the needs, interests and experiences of the children they work with. Meeting the needs of children with Special Educational Needs and Disabilities is a particular focus at tiney and we provide ongoing training and support to home leaders on this area.

Education should develop the whole child. The curriculum in tiney homes addresses the widest possible range of outcomes for children. In particular, it aims to develop confident, curious learners with the skills that will help them thrive later in life - qualities like resilience, critical thinking and collaboration.



At tiney, we believe...

Children flourish when they feel safe, secure and loved

Trusting, loving relationships underpin all early learning. Babies' brains are shaped by love and affection and young children develop confidence and empathy through loving relationships with caregivers to whom they have a strong attachment. Tiney home leaders are trained to structure their settling in period so that new children build this attachment and feel excited about being in their new environment.

Young children need support to manage their emotions. Young children often feel flooded by emotions and tiney home leaders are trained to use reflective language to acknowledge and validate children's feelings and to help them learn to regulate their own emotions and behaviour.

Children receive far more adult attention and interaction in a tiney home nursery than they would in a larger setting. Tiney home nurseries combine the benefits of small and large settings, offering a nurturing, homely environment, and also giving children regular opportunities to play in larger groups when they meet up with other tiney home nurseries at local groups and events.

At tiney, we believe...

Children learn best when playing in a rich, enabling environment

At tiney, we take play very seriously. It is the motor of young children's learning and the way that they explore and make sense of the world. Our training and the 'tiney tips' learning resources on our app are designed to enable the most powerful play, both in tiney home nurseries and in children's homes.

Learning should be fun. Children's early education experiences impact their attitudes towards education when they reach school. Tiney home leaders foster a love of learning by providing an exciting, play-based curriculum, tailored to each child's needs.

The better the environment, the more powerful the play. In a tiney home nursery, children's play is varied, most of it child-led, some of it adult-guided, and it takes place in a stimulating, carefully planned learning environment. Tiney home leaders seek to create an environment so irresistible that learning becomes inevitable.

Children should play and explore outside every day. Children in tiney homes spend significant time outdoors every day, making the most of the learning opportunities in the local area.

Screen time should be a stimulus to, not a substitute for, playful learning. The tiney app contains a bank of learning resources and ideas and some of these contain stories, images, videos or songs to share with the children. Tiney home leaders know, though, that the learning comes through the offline play and interaction afterwards. Screen time in tiney homes is kept to an absolute minimum and is only ever used as a prompt for play.

Children become more independent in tiney home nurseries. The environment is set up to encourage children's independence, with resources accessible and set up at child height, and play-based activities that enable children to follow their own interests and ideas.

Tiney home leaders interact with children's play, they don't interfere with it. Children need the freedom to play and follow their imagination and ideas. Tiney home leaders are trained to know the difference between interacting and interfering with children's play - how to support playful learning without dominating and taking over, and how to stretch children's play through 'sustained shared thinking'. This enables tiney home leaders to guide children towards the next steps of their development and support them to explore the world, all while allowing the child to lead their own play independently.

At tiney, we believe...

Giving children a great start in life is a collective undertaking and the most important work in society

Tiney home leaders are part of a lively, caring, mutually supportive community. Events and groups in tiney neighbourhoods bring our community together regularly to share ideas and support one another's practice. The tiney app allows our community to connect, support and learn from one another online.

Tiney home leaders empower families to enrich children's learning at home. We know how important children's home learning environments are to their development so the playful learning ideas on our app are also available for families and we have set up the learning journal and messenger so that home leaders and families can share and mutually reinforce children's learning.

Educating young children is one of the most important things anyone can do. We want to raise the profile and prestige of early education and attract people who are passionate about changing children's lives. We are training up a new wave of fantastic early educators who will become advocates for play-based learning and change agents in the sector.

We collaborate with the best minds in Early Education worldwide. At tiney we harness existing global expertise on early education and work with renowned, trusted partners to ensure that the curriculum in tiney homes is based on the most up to date, rigorous evidence about how children learn and develop.

