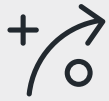




**Advancing Project Delivery  
Through Technology**

## How we're changing the game



**350+**

Delivery Strategies  
on Major Projects



**1000x**

Increase in Information  
Exchange



**50%**

Reduction in Unique  
Building Components



**300%**

Faster Engineering  
Coordination



**30%**

Average Reduction  
in Construction Tendering  
Process



**15%**

Reduction in  
Construction Costs



**15+**

Major Awards from  
Leading Institutions



**80x**

Increase in Owner  
Facility Data



**25+**

Countries Reached in  
Projects Delivered

# About Us

Trimble Consulting is a global consultancy and the world's leading advisor on advanced technology and project delivery strategy within the AECO\* industries. We are a distributed network of specialists supporting key projects and enlightened clients.

## Vision

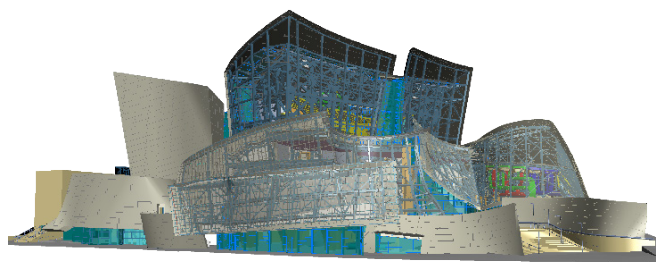
We are a purpose-driven consulting group within Trimble® with a passion to help clients achieve unprecedented results in design, construction and facility operations.

Working alongside owners, architects, engineers and contractors across the globe, we leverage our deep expertise in digital construction and complex project delivery to manage risk and ensure quality, schedule and budget.

We approach every project with the client's goals and objectives in mind and achieve transformational results through a proven method of defining, designing, implementing and optimizing data-driven project systems.

Fueled by technology and equipped with the tools and resources of Trimble Inc, we deploy our consulting services to empower clients with control, transparency and insights into areas they care about most.

With offices around the world and diverse consulting experience from technology to design and construction management, we bring value to notable projects in a range of industries.



## Legacy

Since the 1990s, we have pioneered the use of advanced technologies, digital construction and project delivery to realize complex building and infrastructure projects.

Our group was born out of necessity in order to realize Frank Gehry's complex architecture and effectively communicate with contractors, their supply chains and project owners. Adopting methods and technologies from the automotive and aerospace industries, we developed ways to realize project success and ensure schedule and budget without compromising quality.

After 20 years of delivering a global portfolio of over 500 building and infrastructure projects, Trimble acquired Gehry Technologies to create the next generation of best-in-class delivery teams as Trimble Consulting.

By combining the world leaders in construction technology and digital practice, Trimble Consulting is uniquely positioned to fundamentally change the way the world works. As part of Trimble, we seek to encourage collaboration, maximize productivity, and increase profitability across the project lifecycle.



\* Architecture, Engineering, Construction, Owner

# Clients

We provide leading-edge solutions to the industry's most challenging problems. Teamed with some of the most recognized companies across the globe, we have delivered over 500 projects with technical, logistical or organizational complexity.

## SELECT CLIENTS



facebook

Google

gehry partners

WALT DISNEY  
Imagineering

EllisDon



Zaha Hadid  
Architects



SWIRE PROPERTIES

USC

Gensler



ZAHNER®

morphosis  
ARCHITECTS

Turner



UNS  
UNSTUDIO

AECOM



PERMASTEELISA  
GROUP

SOM



AIA Award for Technology  
in Architectural Practice

## Campus, Higher Education, & Healthcare



**USC University Village**  
Los Angeles, CA  
University of Southern California



**Facebook MPK 20**  
Menlo Park, CA  
Gehry Partners

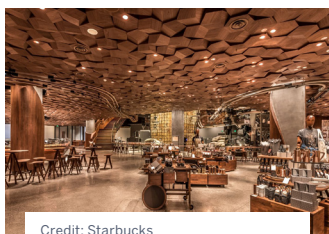


**Cleveland Clinic**  
Abu Dhabi  
Six Construct, Samsung C&T

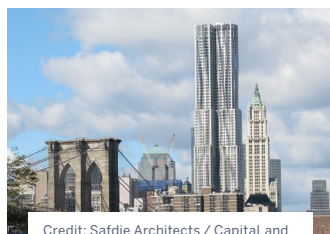


**Yale Residential Colleges**  
New Haven, CT  
Robert AM Stern Architects

## Commercial & High Rise



**Starbucks Reserve Roastery**  
Shanghai, China  
Starbucks



**Eight Spruce Street**  
New York, NY  
Gehry Partners



**Raffles City**  
Chong Qing, China  
CapitaLand



**One Island East**  
Hong Kong  
Swire Properties

## Cultural & Entertainment



**LMCCC World Trade Center**  
New York, NY  
Lower Manhattan Dev. Center



**Shanghai Disneyland Resort**  
Shanghai, China  
Walt Disney Imagineering



**National Museum of Qatar**  
Doha, Qatar  
Ateliers Jean Nouvel



**Louis Vuitton Foundation**  
Paris, France  
Gehry Partners

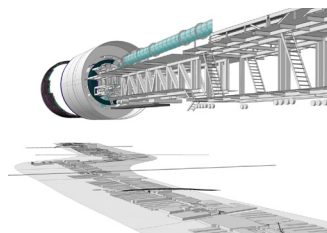
## Transportation & Infrastructure



**New International Airport**  
Mexico City, Mexico  
FR-EE



**West Kowloon Terminus**  
Hong Kong  
Laing O'Rourke



**Metro Line 12**  
Mexico City, Mexico  
ICA Construction



**Ichthys Onshore Facility**  
Darwin, Australia  
Laing O'Rourke



# Testimonials



As I learned, most building construction wastes materials and time due to poor planning. Because of Gehry Technologies' (now Trimble Consulting) special software, our building finished ahead of schedule and under budget.

**Mark Zuckerberg, CEO**

Facebook

The years of work we started back in California—as well as the continuing Revit contributions from our local design team in Shanghai—[are] a great example of how our BIM project is bringing together an international group of team players to help solve solutions.

**Construction Manager**

Walt Disney Imagineering

It is all about project certainty. We know what we're designing, we know how much it's going to cost, we know how it's going to be built, and for us as a developer that is paramount to total success.

**Stephen Fong, Managing Director**

Swire Properties

Trimble Consulting

# HOW WE CAN HELP

We work across all project stages, providing clarity and organization for teams to make informed decisions at the right time. In translating our clients' goals into highly-tailored strategies, we enable our clients to realize fundamentally different outcomes.



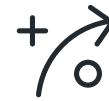
## Your Current Project

COURSE CORRECT  
CHALLENGING PROJECTS



## Your Next Pitch

BUILD CONFIDENCE  
WITH CLIENTS



## Build Your Process

BUILD COMPETENCY  
WITHIN YOUR TEAM

### OUR PROCESS

#### 01 Define

We work with you to define the problem and build a solution-based process.

- Business Strategy
- Overall Assessment
- Goals & Objectives Alignment

#### 02 Design

We create a roadmap tailored specifically for your team.

- Implementation Plan
- Technology Strategy
- Data Strategy
- Process Mapping

#### 03 Implement

We will be by your side to ensure successful adoption and delivery.

- Faster Deliverables
- BIM Management
- Coaching, Training & Skill Building

#### 04 Optimize

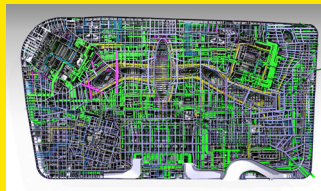
We track, iterate and refine to keep your project running smoothly.

- Dashboarding, Analytics & Reporting
- Quality Control
- Best Practices

### DRIVEN BY TECHNOLOGY



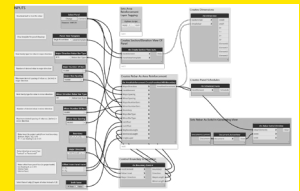
**Dashboards,  
Analytics & Reporting**



**BIM Data &  
Content for VDC**



**Augmented Reality  
& Field Technologies**



**Automation &  
Custom Development**

## **USA**

555 West 5th Street | 35th Floor  
Los Angeles, CA 90013

12655 W Jefferson Blvd. | 6th Floor  
Los Angeles, CA 90066

+1 (310) 862 1200  
[usa@trimbleconsulting.com](mailto:usa@trimbleconsulting.com)

## **EUROPE**

17 rue Paul Lelong  
Paris 75002, FRANCE

+33 (0) 9 8176 9694  
[europe@trimbleconsulting.com](mailto:europe@trimbleconsulting.com)

## **MIDDLE EAST**

Sky Tower  
Reem Island - 23/F  
Abu Dhabi, UAE

+971 2 4069800  
[middleeast@trimbleconsulting.com](mailto:middleeast@trimbleconsulting.com)

## **AUSTRALIA**

Level 11, 135 Wickham Terrace  
Spring Hill, Brisbane, QLD, 4000

+61 417 564 214  
[australia@trimbleconsulting.com](mailto:australia@trimbleconsulting.com)

## **ASIA**

3 Harbourfront Place, #13-02 HarbourFront  
Tower Two, Singapore 099254

+65 6871 5878  
[asia@trimbleconsulting.com](mailto:asia@trimbleconsulting.com)

**[trimbleconsulting.com](https://www.trimbleconsulting.com)**