



Welcome to SketchUp

Your toolkit of essential shortcuts and must-have extensions to help you make the most of your trial.

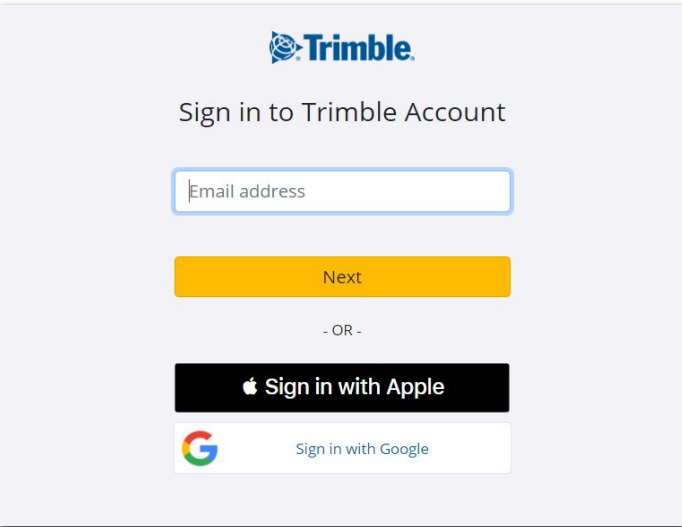


Content guide

How to get started	4
What's included in your subscription	6
Extensions & resources	12
Extension resources & websites	16
Learning resources & links	17

How to get started

Activate your trial

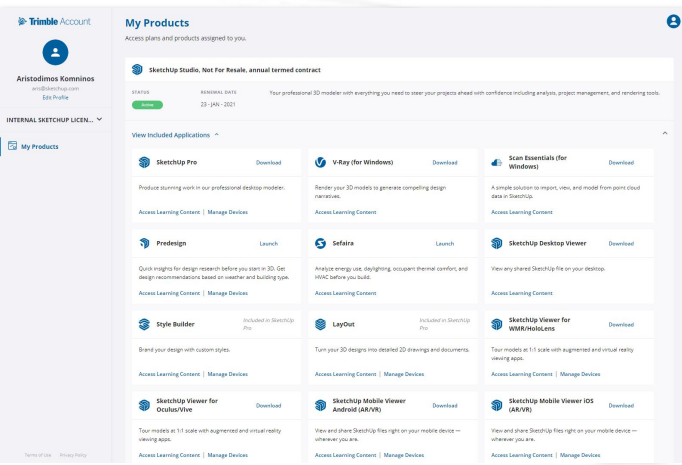


Trimble ID

You'll need a Trimble ID to activate and access your trial, products, and to log into SketchUp's online resources such as 3D Warehouse.

To create a Trimble ID, [click this link](#). If you already use SketchUp, you can open the application on your desktop (2023 or later) or visit a SketchUp site such as [3D Warehouse](#), and click "Sign in" to begin this process.

If you think you already have a Trimble ID but have not activated it yet, try signing in again.

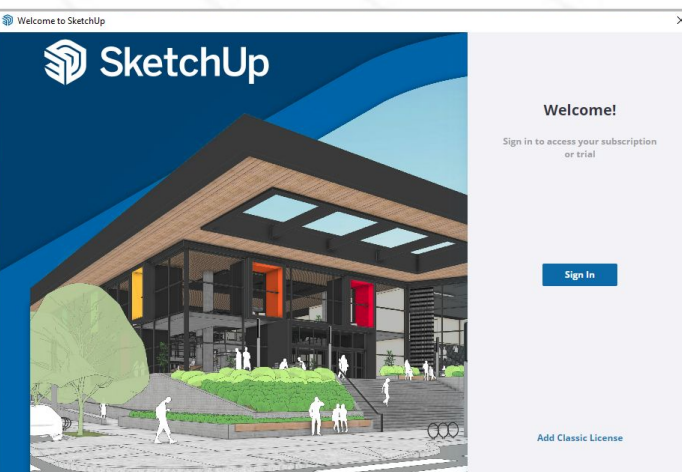


My Products

Once you have been assigned a SketchUp trial you will receive an email containing details of your features, as well as a link to access them.

Once signed in, you will see options to view your trial, settings, and more.

Click **My Products** to launch or download the products assigned to the email address you have signed in with.



Signing In to SketchUp

The first time you launch SketchUp, a welcome window will indicate whether you're authorized or licensed. If you're currently using a SketchUp Trial or if you have an active subscription, you'll need to click "Sign In" to begin.

What's included

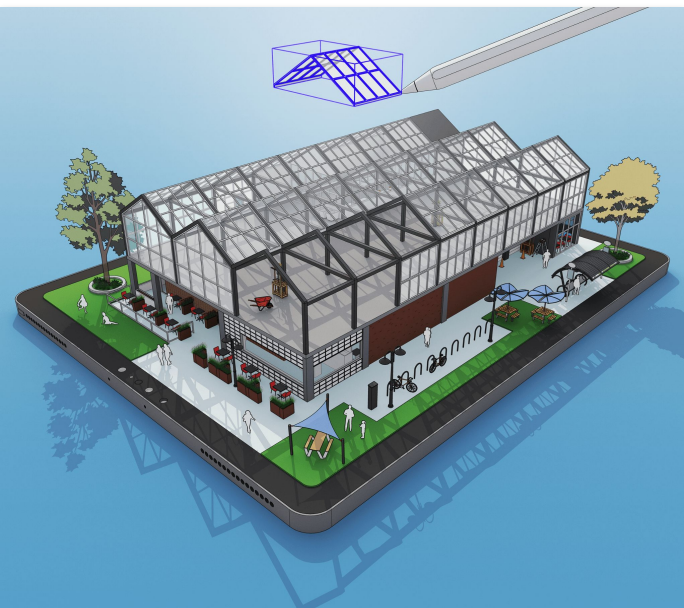
Unpack your toolbox



SketchUp for Desktop

SketchUp for Desktop is useful from the earliest stages of design all the way to final project delivery. Easy-to-use drawing tools are combined with the accuracy and detail needed to produce constructible models, stunning images, 2D documentation, cost estimates and material schedules.

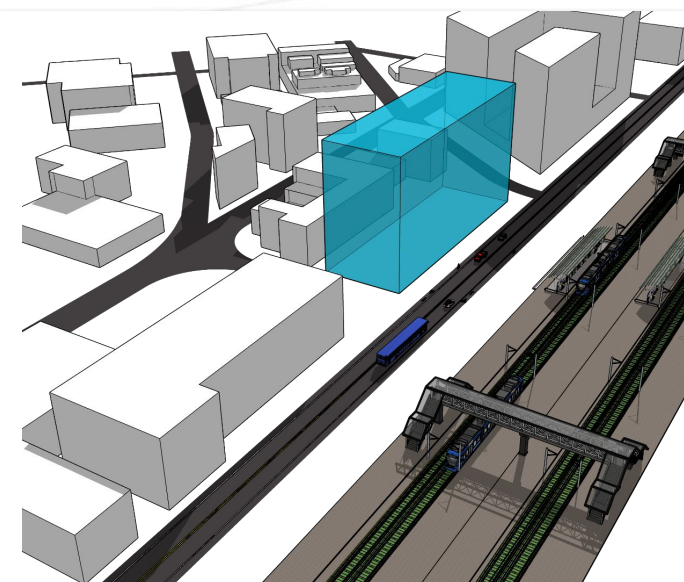
[Learn more >](#)



SketchUp for iPad

Sketch in 3D faster than ever using SketchUp for iPad's intuitive and versatile drawing tools — think Apple Pencil, multi-touch-gestures, and mouse and keyboard inputs. Store and access projects anytime in the cloud, and sync them across web, desktop, mobile, and tablet devices. SketchUp for iPad is fully context-enabled — pull in satellite imagery and 3D terrain data for site context, or situate your designs in the real-world using its AR capabilities.

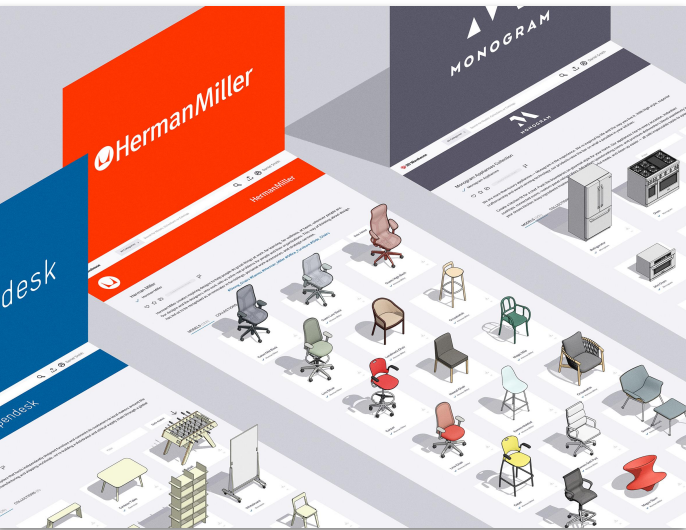
[Learn more >](#)



SketchUp for Web

With SketchUp for Web, the canvas for your next idea is just a browser tab away, all you need to get going is an internet connection. Our web-based modeler is a streamlined version of our desktop app that uses the same core technology. And, by saving projects to Trimble Connect, you're always working on the most up-to-date version of a model; you can even look-up version history.

[Learn More >](#)

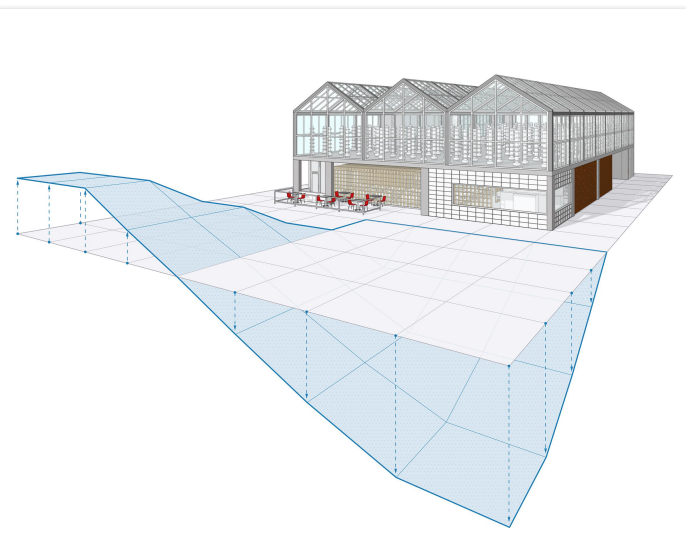


3D Warehouse

An online repository with millions of 3D models. Instantly add rich context and entourage with pre-built configurable objects. Customize parameters like size, type and materials to create tailored objects to your projects.

Manufacturers leverage 3D Warehouse to increase brand awareness and generate leads by placing products in front of millions of potential buyers.

[3D Warehouse >](#) [Create an Account >](#)



Extension Warehouse

There are hundreds of third-party add-ons to extend the tools and features of SketchUp. Improve workflows by reducing time-consuming, complex, or repetitive processes. There are extensions for photorealistic rendering, reporting, parametric modeling, animation, and more.

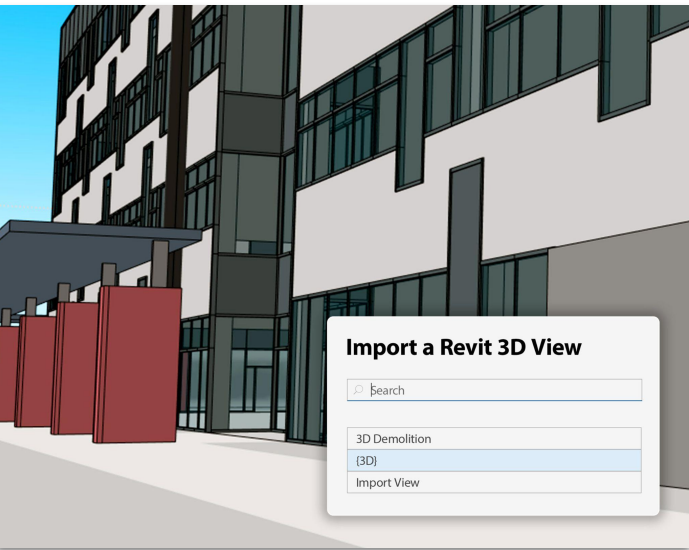
[Visit Extension Warehouse >](#) [Learn more >](#)



LayOut

Combine models with text and 2D vector illustrations for beautiful presentations, permit submittals, construction documents, and other dimensioned drawings. 3D models are dynamically linked to LayOut files, and changes in SketchUp are instantly mirrored to documents.

[Learn more >](#)

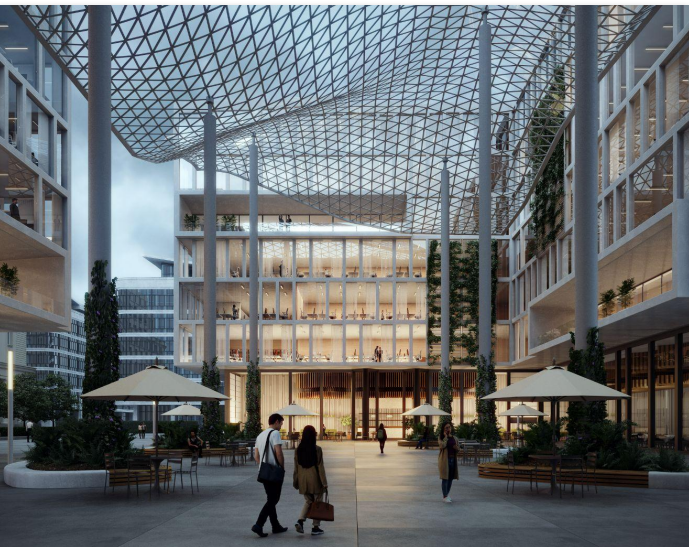


Revit Importer

EXCLUSIVE TO SKETCHUP STUDIO

SketchUp's Revit Importer is a native functionality right within the Desktop modeling environment. It enables users to import a specific 3D Revit view and translate Revit families to optimized SketchUp components for quick, creative iteration at any project phase. *Windows only*

[Learn More >](#)



V-Ray®

EXCLUSIVE TO SKETCHUP STUDIO

From detailed high-rise buildings to interior floor plans, add realism into your projects using V-Ray for SketchUp. V-Ray seamlessly integrates with SketchUp, allowing you to produce stunning imagery and animations with realistic lighting and materials. Present your design story, remove ambiguity, showcase your proposal's merits to clients, and win more work. [Learn more >](#)

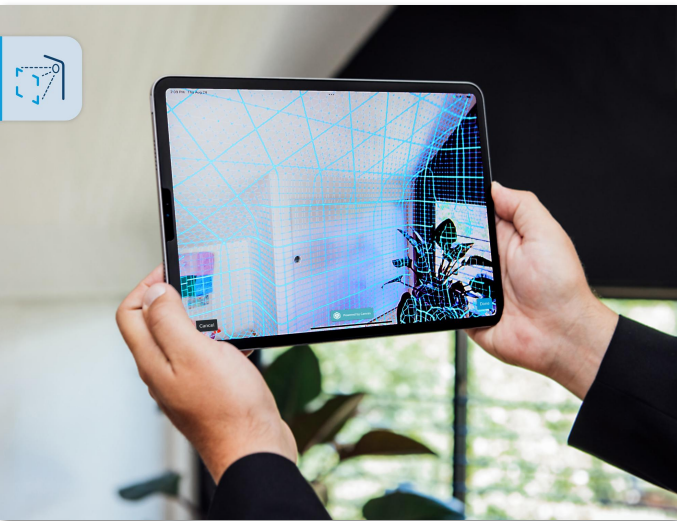


Scan Essentials

EXCLUSIVE TO SKETCHUP STUDIO

Unlock the power of point cloud data and increase your workflow efficiency. Easily access, view and create 3D assets from terrestrial scans, photogrammetry, lidar sensors, mobile mapping, and drone captures. Import, view, and transform this scan data into an invaluable 3D asset by directly modeling onto point clouds using SketchUp's native tools. *Windows only*

[Learn more >](#)



Scan-to-Design[Labs]

AVAILABLE ON SKETCHUP FOR IPAD

Give yourself a head start on conceptual design and capture as-built conditions quickly with this powerful LiDAR-scanning feature. Scan existing spaces and watch as SketchUp, powered by Canvas, Apple's and Trimble's cutting edge technology, transforms your scan data into an intelligently organized 3D SketchUp model.

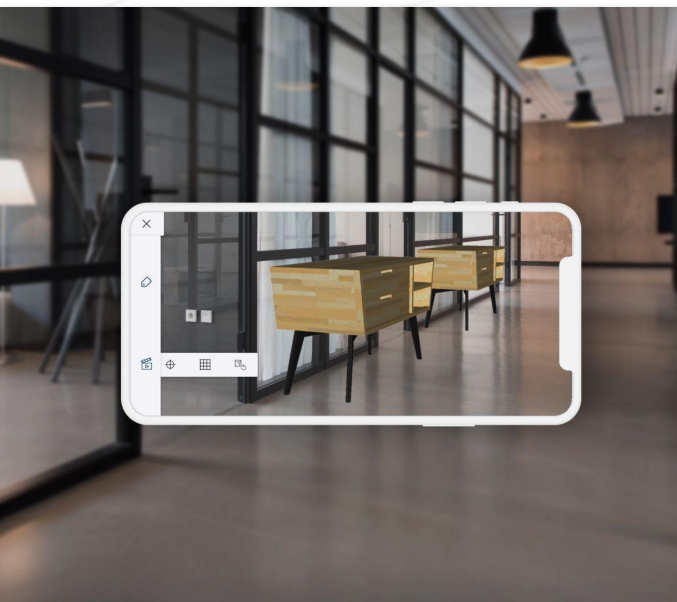
[Learn More >](#) [Scan to Design Help Center >](#)



SketchUp Viewer for Meta Quest

Experience your 3D SketchUp models completely untethered in immersive mode or enjoy our new Home Environment to explore your 3D model in tabletop mode. Cycling through scenes within a model facilitates rapid decision making and can show construction sequencing.

[Download Viewer >](#)

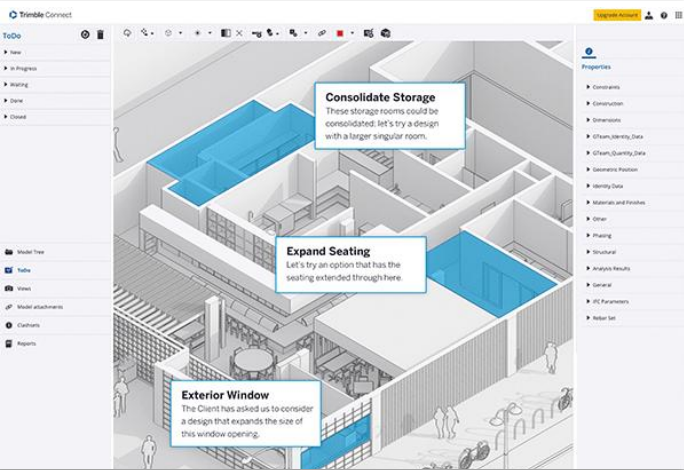


SketchUp Viewer for Mobile

Access models from 3D Warehouse, Trimble Connect, or other cloud storage apps on mobile. View and present models with the familiar orbit, pan, and zoom tools. The viewer supports scenes, fly-through animations, layers, section planes, and styles.

Use AR features to merge 3D models with real-world context; reimagine room layouts, evaluate proposals in context or review projects.

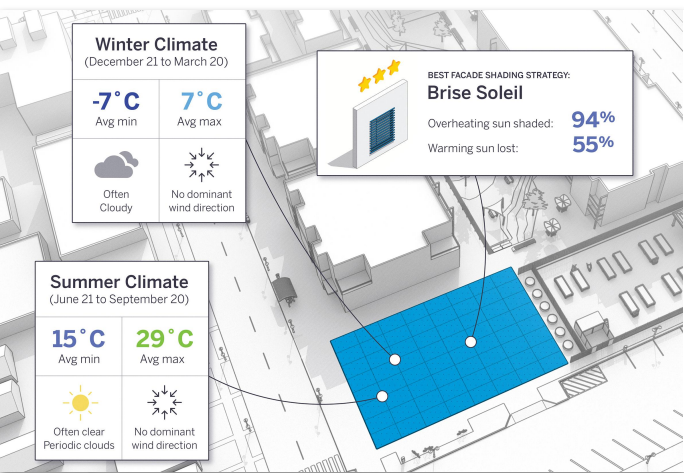
[Download Viewer >](#)



Trimble Connect

Trimble Connect is a cloud-based platform that connects the right people to the right constructible data, at the right time. View, share, and access project information from anywhere at anytime.

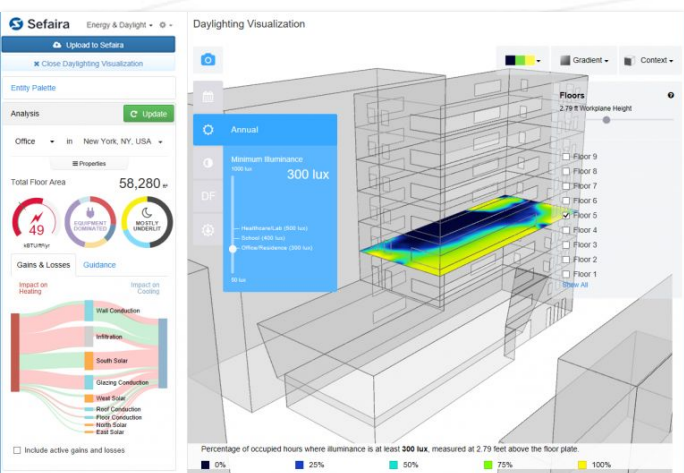
[Learn More >](#)



PreDesign

PreDesign is a new way to start your designs. With PreDesign, you can easily connect the dots between climate and concept design at the start of your project. Present compelling graphics to clients and steer your projects in the right direction.

[Learn more >](#)



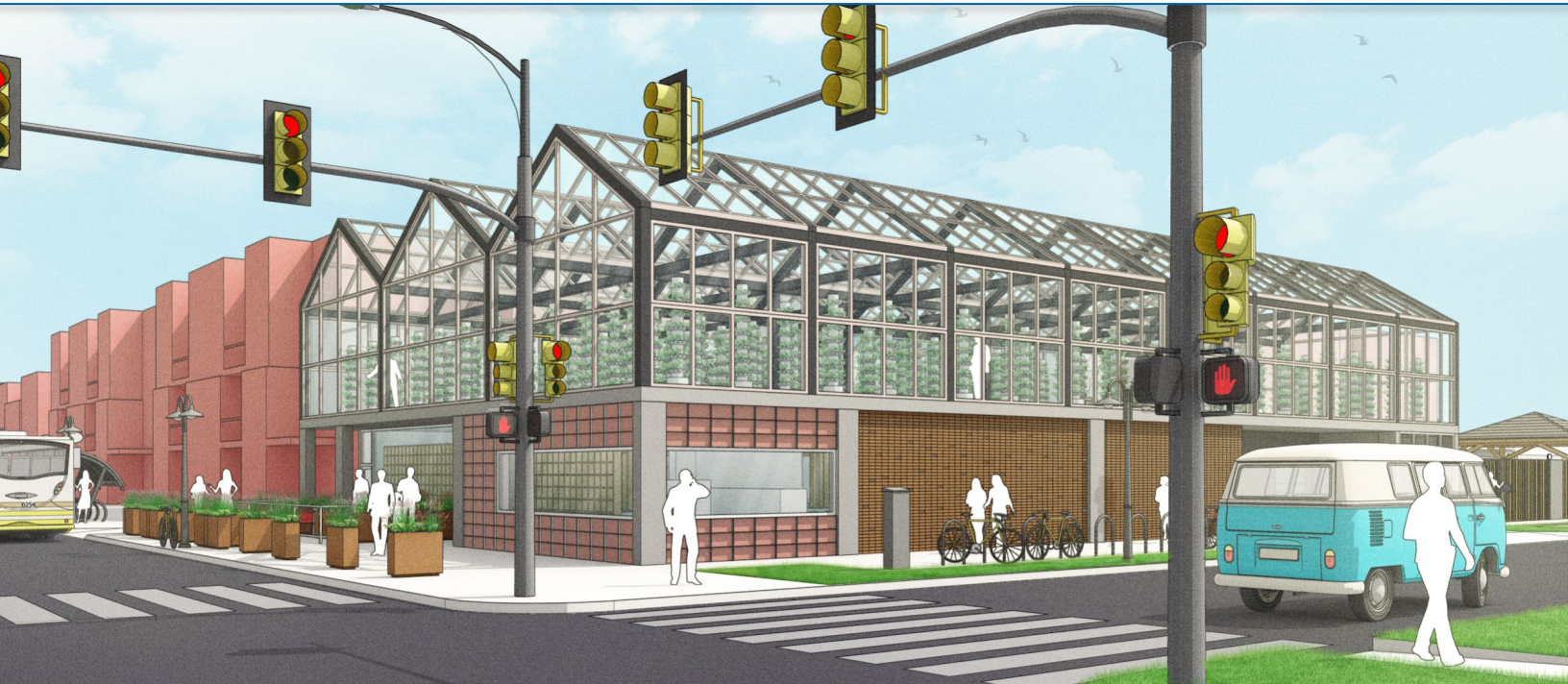
Sefaira

Bring insightful building performance simulations to the conceptual design phase using Sefaira's energy and daylight analysis plugins in SketchUp. Dive deeper by assessing passive strategies for lower loads and active HVAC sizing in Sefaira's web app. Generate results powered by industry-accredited analysis engines within minutes.

[Learn more >](#)

Extensions & resources

Supercharge your SketchUp workflow



Extensions

Whatever you do with SketchUp, odds are that there is an extension out there that will help you to do it better/quicker/easier. Extensions are bits of software that run inside of SketchUp that give you additional functionality within the native design environment.

Extension Warehouse

Check out our online repository of extensions, [Extension Warehouse](#), for a full list of certified extensions available to you.

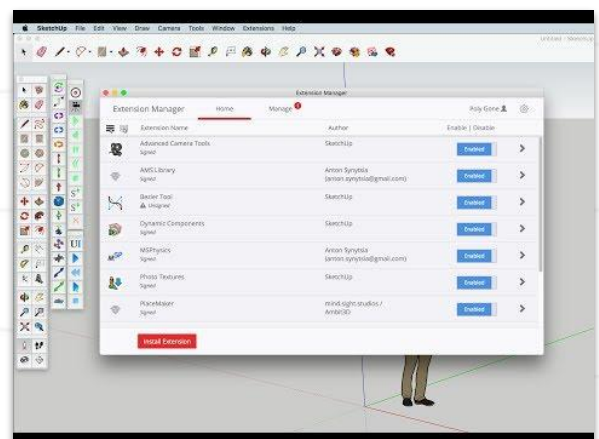
If the Extension Warehouse is not quite enough for you, you may want to take a look at the extensions available on the [SketchUcation Plugin Store](#) (note you will need to [register for a free account](#) to download from the Plugin Store).

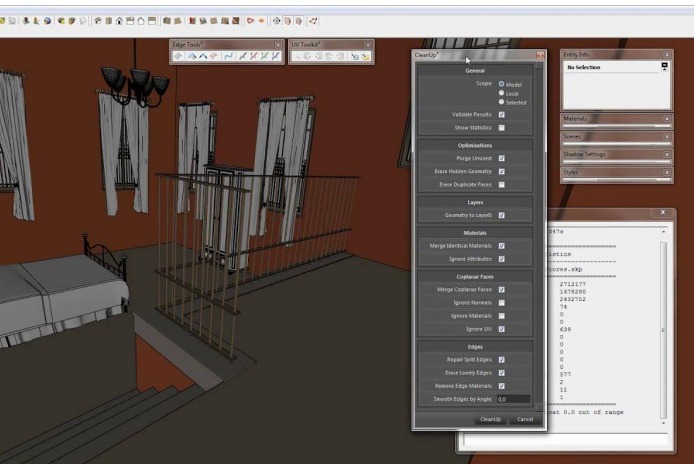
Not sure where to start?

750+ extensions might leave you feeling overwhelmed. We've shortlisted some essential SketchUp extensions that will improve the productivity of your team. Some of these plugins are free, but we have indicated the commercial extensions with a (C).

Installing extensions

For information on installing extensions, check out [this video](#) for step-by-step instructions.

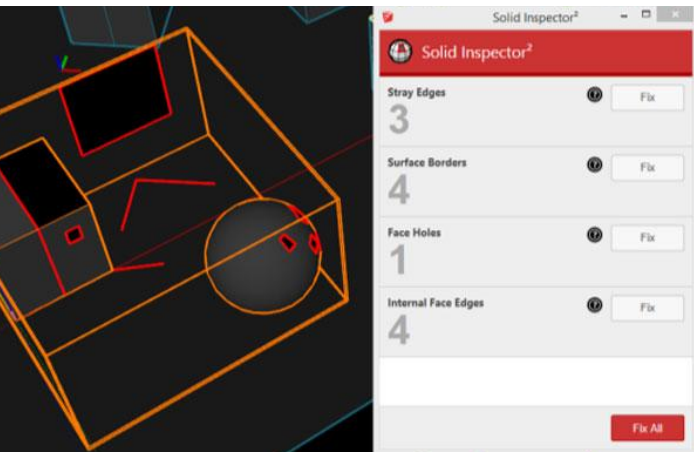




CleanUp³

CleanUp is a plugin for cleaning and optimizing your SketchUp models. With CleanUp you can make your 3D models lighter and correct some possible errors.

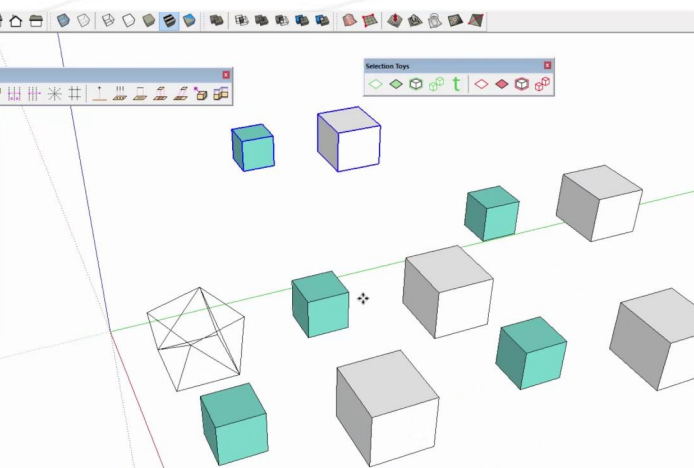
[Learn More >](#)



Solid Inspector

Solid Inspector is an extension that helps you make sure that your 3D objects are watertight (solid).

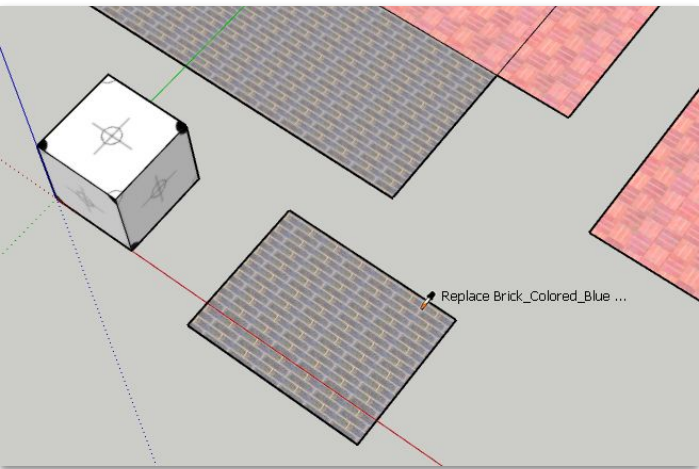
[Learn More >](#)



Selection Toys

You can use this extension as a selection filter to make smart selections in SketchUp.

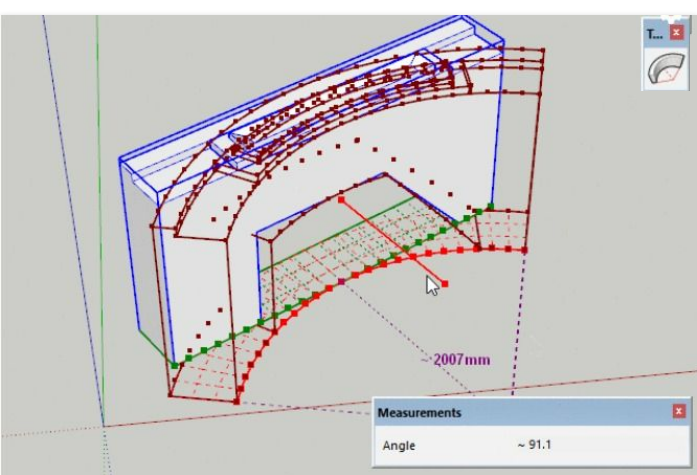
[Learn More >](#)



Material Replacer

With Material Replacer extension you can replace a material with another by simply selecting an existing swatch in your SketchUp model.

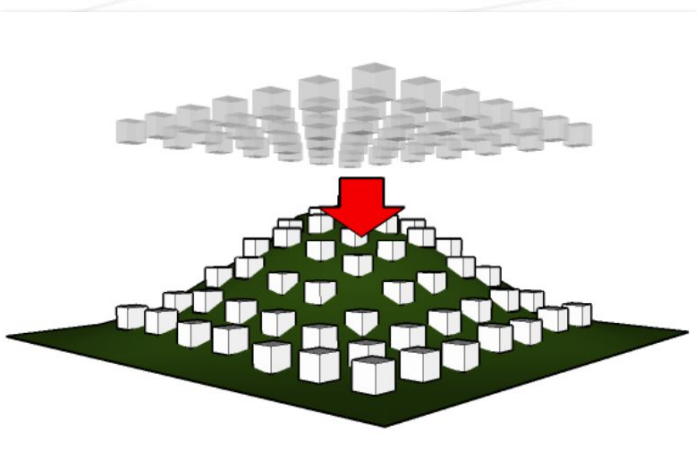
[Learn More >](#)



TrueBend

TrueBend extension allows you bend geometry instances to a given degree, preserving the original length of the reference segment.

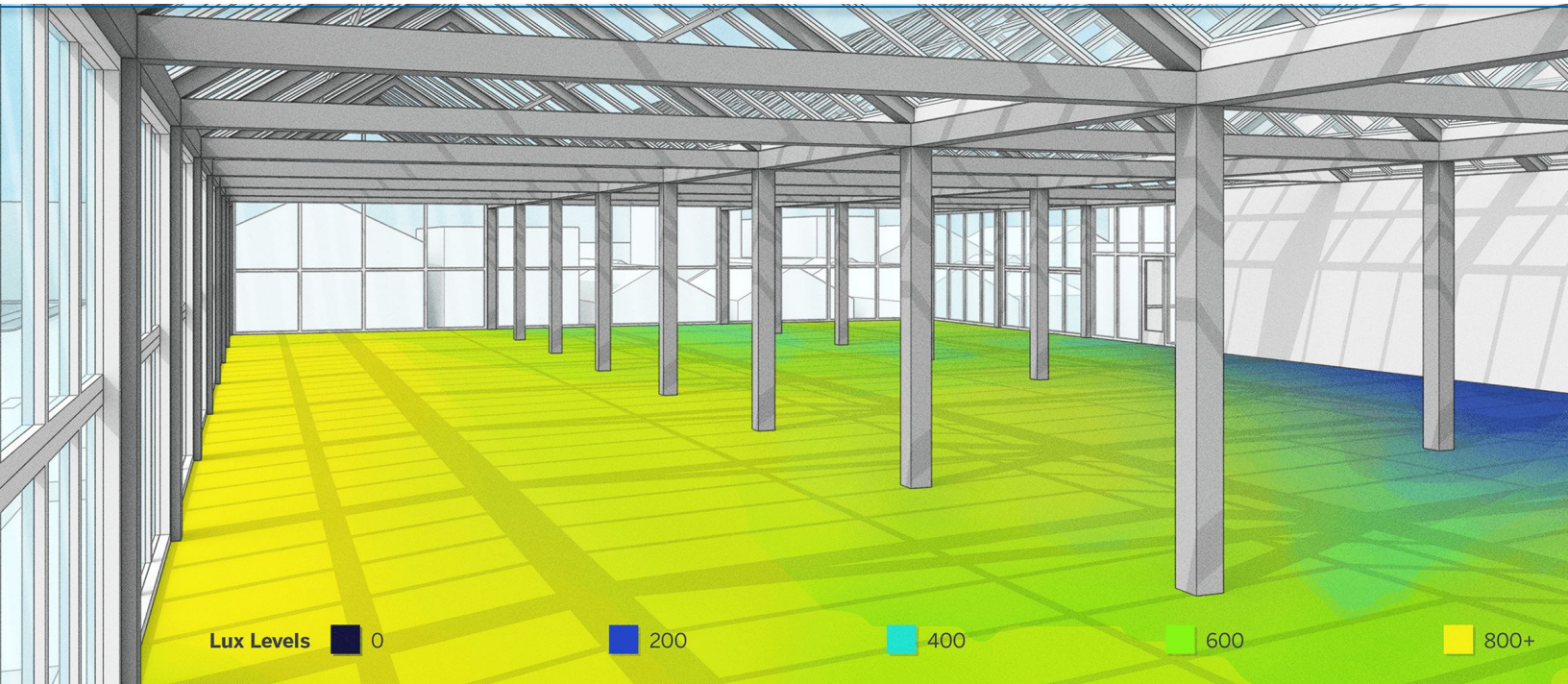
[Learn More >](#)



DropGC

DropGC is a plugin for quickly dropping selected groups and components onto a 3D terrain inside your SketchUp model.

[Learn More >](#)



Extension Resources & Websites

Although the SketchUp Extension Warehouse is your first stop for extensions that are built off of our robust C API, the SketchUp community offers many more useful extensions on other platforms outlined below.

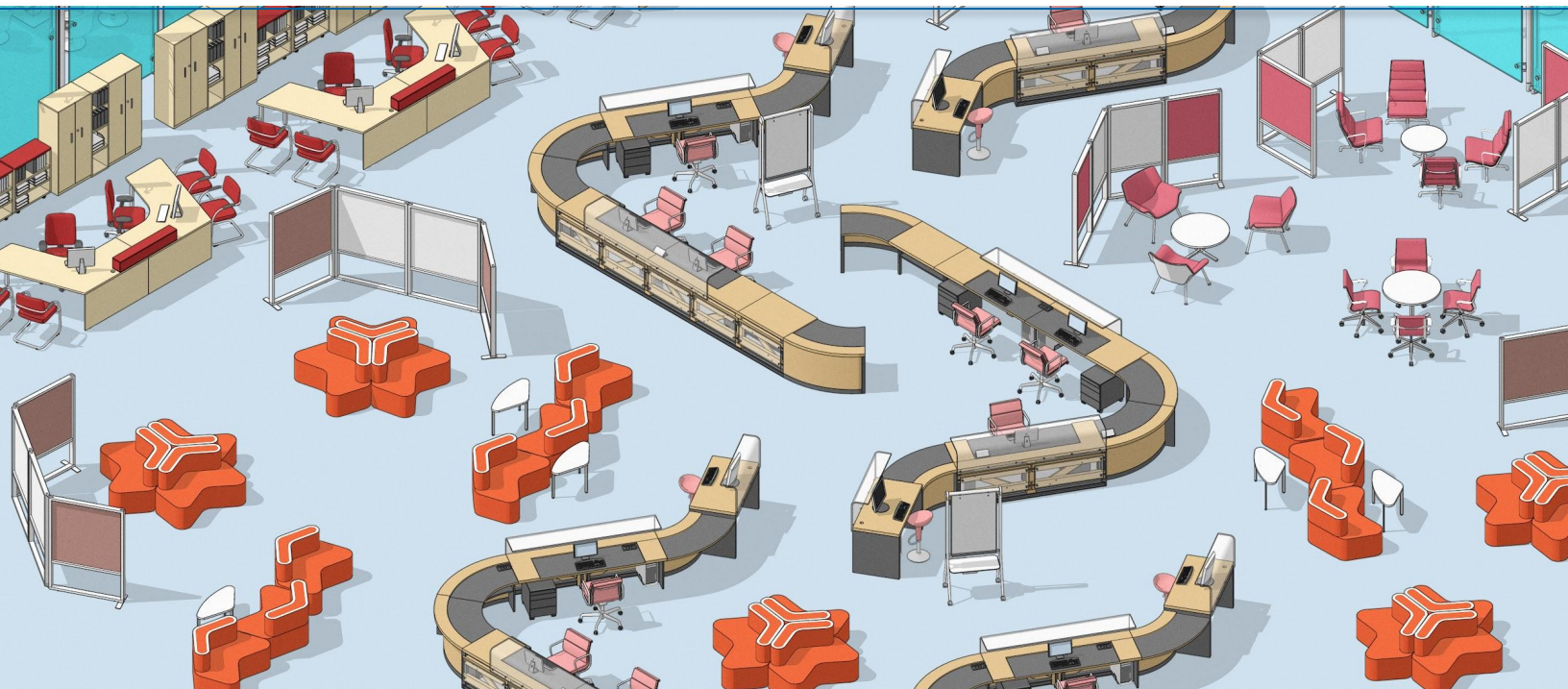
[SketchUp Extension Warehouse](#)

[SketchUcation](#)

Interested in developing your own extension?

[SketchUp API](#)

This page gives you details about how to develop your own Ruby script, access SketchUp's API, and links to securely encrypt and publish your extension.



Learning Resources

 [SketchUp Blog >](#)

SketchUp's blog hosts our latest written content.

 [SketchUp TV >](#)

SketchUp's official YouTube channel.

 [SketchUp Campus >](#)

SketchUp's formal learning platform.

 [SketchUp Forum >](#)

Connect with SketchUp's community and ask any technical questions.

 [SketchUp Talk >](#)

SketchUp's podcast on iTunes.

Connect with us

