

AutoBid Estimating Essentials

Essential Tools for Mechanical & Sheet Metal Estimators in One Powerful Subscription

Your essential estimating solution and the foundation for your mechanical, piping plumbing or sheet metal pre-construction workflow, AutoBid Estimating Essentials provides the tools you need to create the most accurate estimates, automate workflows, and facilitate collaboration and information-sharing with team members, saving you time and helping you profitably bid and win more work – all in one value-packed subscription.

With AutoBid Estimating Essentials you get access to Trimble's market-leading AutoBid Mechanical and AutoBid SheetMetal estimating software, integrated OnScreen View graphical takeoff, material and labor pricing, submittal management and collaboration tools. Plus, your subscription includes an exclusive preview of Trimble Estimation MEP Pro web-based estimating software.

With AutoBid Estimating Essentials, you have the power create mechanical and sheet metal estimates, save time with streamlined workflows and gain a competitive advantage on bid day.

What's included

- AutoBid® Mechanical & AutoBid® SheetMetal Software
- Advanced Image Manager (AIM)
- Trade Service® Product & Pricing Content
- Supplier Xchange
- Submittal Manager
- Trimble Connect® Business Premium
- Estimation MEP Pro (preview)

Trimble Cloud Hosting

With Trimble's cloud hosting services for AutoBid Estimating Essentials, you receive a simplified and flexible IT experience.

Let Trimble take care of maintenance and backups so you can focus on your main goal – profitably executing quality projects.

Benefits

- **One streamlined subscription** to meet your needs from estimating through bid submittal.
- **Increase efficiency and consistency** by equipping your whole estimating team with the same powerful tools, facilitating easier collaboration and training as well as simpler license management.
- **Build estimates faster** with consistent, automated processes while also reducing the risk of data entry errors compared to traditional takeoff.
- **Increase accuracy** with pre-built assemblies, spec-driven takeoff, auto-fitting generation and integrated, up-to-date material pricing and labor.
- **Streamline workflows**, reduce double entry of data and improve project handoff by sharing estimate data with project operations, the financial ERP and other third-party applications.
- **Improve information sharing** with your teams and other stakeholders for greater efficiency and informed decision making.
- **Optimize your organization** with robust document management tools that transform drawings, reports and images through high-quality resolution enhancements, extensive customization and advanced 2D takeoff capabilities.

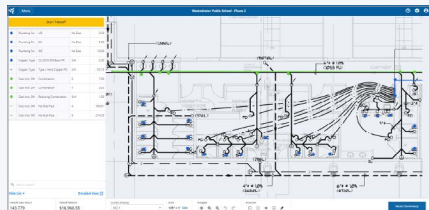
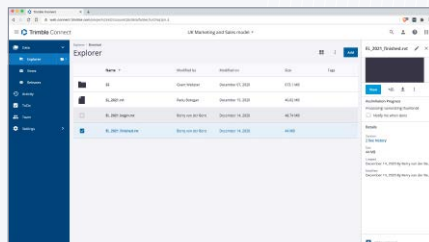
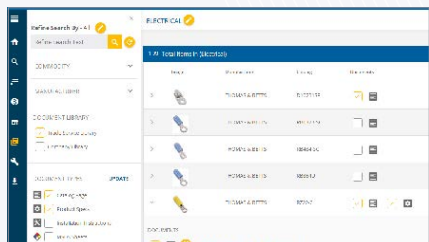
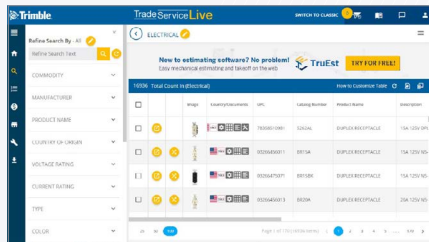
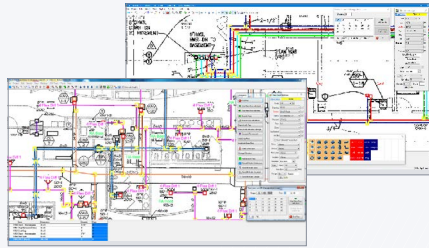


AutoBid Estimating Essentials



AutoBid Estimating Essentials

Essential Tools for Mechanical & Sheet Metal Estimators in One Powerful Subscription



AutoBid Mechanical & AutoBid SheetMetal

Trimble® AutoBid is the market-leading estimating software for commercial and industrial mechanical piping and plumbing contractors and commercial HVAC and sheet metal contractors. Providing you with customized, connected OnScreen View graphical takeoff tools, automatic fitting generation, value engineering, a database of over 100,00 items and multiple industry standard labor books, Trimble AutoBid helps you create the most accurate bids and gain a competitive advantage on bid day. Your subscription also includes Trimble's Advanced Image Manager (AIM) tool for modifying and organizing drawings and other files for import or use by other applications, further supporting your project workflows.

Trade Service Product & Pricing Content

TRA-SER® product and pricing content (AllPriser in Canada) allows users to easily import up-to-date pricing and product data directly into Trimble AutoBid, increasing estimating accuracy and saving time on database maintenance. Included with TRA-SER, Supplier Xchange™ allows estimators to electronically submit a list of items, obtain company-specific quotes from multiple suppliers in real time and apply that pricing directly to the estimate, saving rework and possible errors and speeding up the bid process.

Submittal Manager

Submittal Manager can trim 50% - 75% off the time it takes to create a submittal package and help you win more business. Simply upload the bill of material from your estimate and it's matched against our database of more than a million up-to-date catalog pages, installation instructions, specification and MSDS sheets. Within seconds you will have the most current catalog pages automatically filed in the MasterFormat order and ready to customize with simple design tools for a professional bid submittal package.

Trimble Connect

Trimble Connect® is an open collaboration tool that connects the right people to the right data at the right time on any device – enabling informed decision making and enhancing project efficiency. Trimble Connect facilitates the sharing of detailed data such as estimates, drawings, models and more, to help connect workflows and simplify collaboration and coordination among stakeholders.

Estimation MEP Pro (preview)

Your Estimating Essentials subscription includes exclusive, early access to Trimble's newest web-based estimating solution. Not yet generally available, Estimation MEP Pro represents the future of estimating software, offering fully integrated graphical takeoff, material pricing and labor, and a continuously expanding set of features – features you can help define. This is your opportunity to preview and try Estimation MEP Pro, provide us with your feedback and be a part of the evolution of Trimble's next-generation estimating solution.

Advanced Image Manager

Advanced Image Manager (AIM) provides estimators with essential document management functionality to support their preconstruction workflows. With AIM, users can view multi-paged files (.pdf, .jpg, .png, etc.) and easily break apart or merge individual sheets. Beyond robust file editing capabilities, AIM also offers impeccable file resolution improvements and advanced 2D takeoff to help estimators further modify and organize digital assets, such as drawings, reports or images.