



Get the Most From Your Budget by Managing the Full Lifecycle of Vehicles and Equipment

Fleet & Equipment Manager is an enterprise software solution that lets you reduce costs and increase the return on your asset investments by improving efficiency and maximizing utilization. Whether you're managing heavy equipment or sedans, you can track, coordinate, summarize, and report all activities throughout the asset lifecycle.

With Fleet & Equipment Manager, You Can:



Make Better Decisions

Track information about labor, materials, and equipment to improve decision-making or preventive maintenance, repairs, and new purchases.



Increase Efficiency

Save time and money by managing the same tasks with fewer vehicles or pieces of equipment.



Boost Performance

Increase vehicle and equipment availability to improve performance.



Improve Data Collection

Simplify and accelerate field data capture and improve accuracy via the Fleet Maintenance Manager™ mobile app.

SaaS Solution

Fast deployment • Strongest security • Seamless updates • Highest performance

Features and Benefits

Inventory Records & Tracking

- Maintain accurate historical records of vehicle usage and maintenance to improve future planning.
- Track fleet and equipment parts inventory and turnover to ensure adequate supplies.
- Automate your workflow per organizational rules to improve efficiency.

Labor, Parts & Fuel Management

- Record and manage labor requirements, parts used, and associated costs to maintain budget alignment.
- Monitor fuel usage manually and interface with a variety of fuel management systems to streamline data access.

Equipment Management

- Search for a piece of equipment using the VIN or other criteria to quickly find relevant information.
- Purchase equipment of a given class code and have all details auto-populated for easy visibility.
- Transfer equipment from one management unit to another to maximize utilization.
- Lease out equipment for the long term to recapture expenses.
- Calculate equipment rental rates based on operational costs of maintenance to ensure adequate ROI.

- Request, assign, and dispatch vehicles efficiently using the online motorpool reservation system.

Maintenance & Repairs

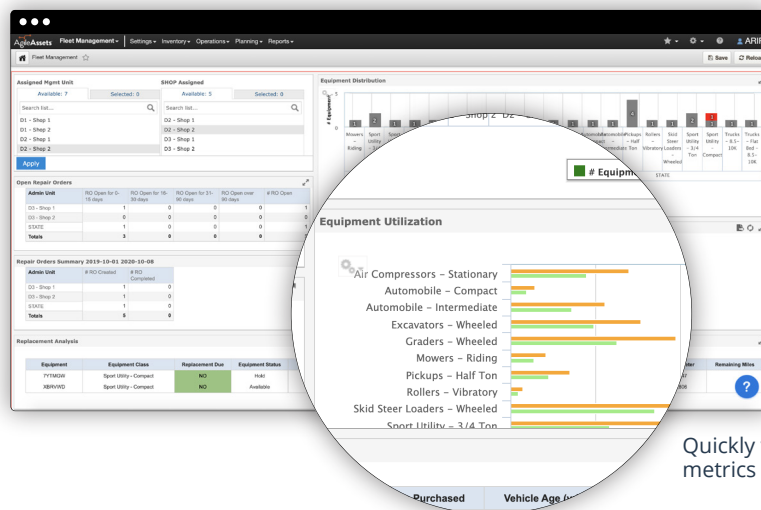
- Use comprehensive tools to schedule preventive maintenance at the right time using the right resources.
- Create in-house and commercial repair orders quickly and efficiently.
- Identify and manage vehicle and equipment warranties, and recover related costs in a smooth process.

Analysis & Reporting

- View equipment utilization percentages for the past month and year to see trends and outliers.
- Identify all equipment due for replacement, and track upcoming replacements to ensure timely delivery.
- Monitor utilization, costs, and more using intuitive dashboards to see performance at a glance.
- View and modify out-of-the-box reports to get operational insights and share information with decision-makers.

iOS App

- Improve efficiency and accuracy in the field with the Fleet Maintenance Manager™ iOS mobile app.



Quickly view key performance metrics in the dashboard.

Learn More

For more information about transportation asset management strategies and solutions, contact us at [+1 800.877.8734](tel:+1800.877.8734) or AgileAssets.com.