



## Improve Investment Decisions Across the Entire Portfolio

Portfolio Analyst is an enterprise software that lets you make better multi-asset fund allocation decisions using advanced analytical capabilities.

### With Portfolio Analyst, You Can:



#### Manage and Mitigate Risks

Identify risk exposure by asset category, compile a risk register, and evaluate prioritized risks for planning, analysis, and mitigation.



#### Create Meaningful Reports

Generate rich graphical and interactive reports that communicate the effects of trade-off decisions.



#### Maximize ROI on Your Budget

Allocate limited funds effectively across multiple assets by selecting candidate projects with the highest return on investment (ROI).



#### Justify Funding Needs

Use data-supported evidence to substantiate legislative budget requests.



#### Predict Investment Outcomes

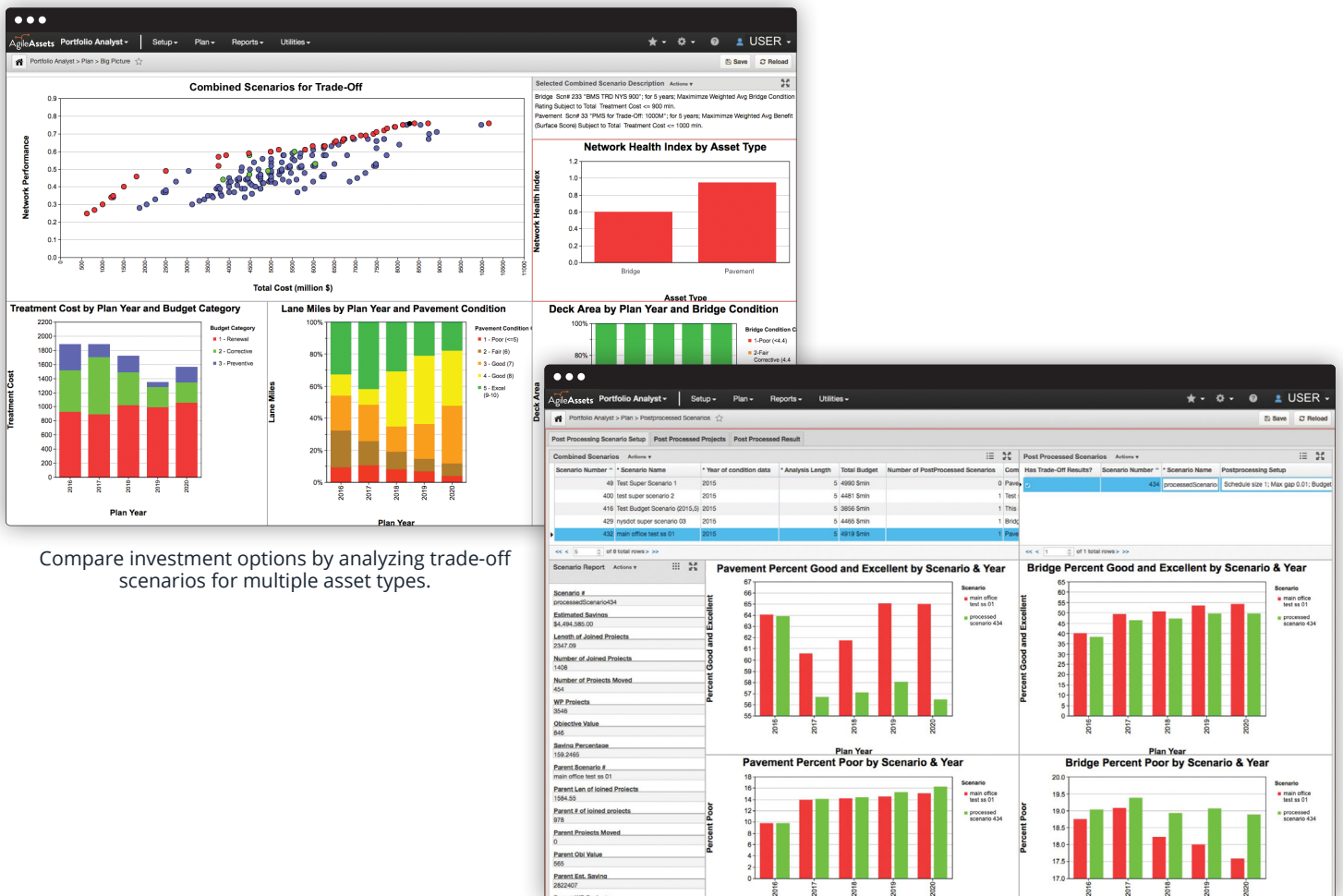
Analyze multiple scenarios across multiple time frames to determine the best investment strategies for the short and long term.

 **SaaS Solution**

Fast deployment • Strongest security • Seamless updates • Highest performance

# Features and Benefits

- **Cross-Asset Analysis** – Compare investment options by analyzing trade-off scenarios for multiple asset types.
- **Financial Insight** – Quickly summarize funding needs to meet short-term and long-term objectives.
- **Holistic Forecasting** – Establish and analyze multiple what-if scenarios to assess agency-wide impacts.
- **Program Overview** – Make more effective allocations across program areas for any target performance metric.
- **Project Delay Screening** – Quickly determine performance and budget impact of project delays.
- **Federal Projects Definition** – Easily define projects available for federal funds.
- **GIS Mapping and GPS Location** – Use GIS mapping and GPS location referencing to enhance analysis.
- **Multimedia Support** – Integrate multiple media types with associated analysis activity.



Compare investment options by analyzing trade-off scenarios for multiple asset types.

See the budget savings and performance impact of optimized work plans that combine projects across multiple years based on location and project type.

## Learn More

For more information about transportation asset management strategies and solutions, contact us at **+1 800.877.8734** or **AgileAssets.com**.

