

# The Ultimate Guide to Construction Software Interoperability & Trimble Integrations



# Why should interoperability be on your radar?



Your company (and your competitors) are already using many construction technologies between your different teams – and the list is only getting longer. Adding to that, your vendors, subcontractors, project owner, other project stakeholders also come with their own technology stacks.

Is everything compatible? Secure and compliant? How can anyone know for sure?

The complexity of modern construction projects makes it difficult to share large amounts of data between different systems and teams.

- Each project has many stakeholders, and different roles need different levels of access to information
- Each work group has a stack of different technologies that may not be integrated
- Each technology has different data validation, permissions, and security parameters

This struggle has prompted a move toward interoperability in construction. *Interoperability is the ability to share and*

How many software programs and apps does your company use for each project? 50? 100?

(The average is **129**, according to research from Okta.)

*integrate information with different software systems, automatically* — you’ve probably heard of integrations or APIs.

It’s about meeting people where they are, with the tools they’re already using.

When critical data is connected automatically, businesses can scale. By removing barriers to share information, companies have better transparency with risk and profit, and your teams can trust the data, .

# How does data integration promote interoperability ?



There are four levels of integration that your construction company may already be using.

## Types of Integrations

# 5

### None

Data is manually re-entered as info is transferred from one system to another

# 1

### File export/import

Compatible files or data is manually exported and imported between systems

# 2

### Self-built or custom connection

Data is sent between software systems that were created by the company's own development team, usually to solve a workflow problem.

# 3

### Out-of-the-box integration

Data is shared using standardized, pre-built software that often comes pre-configured for fast implementation

# 4

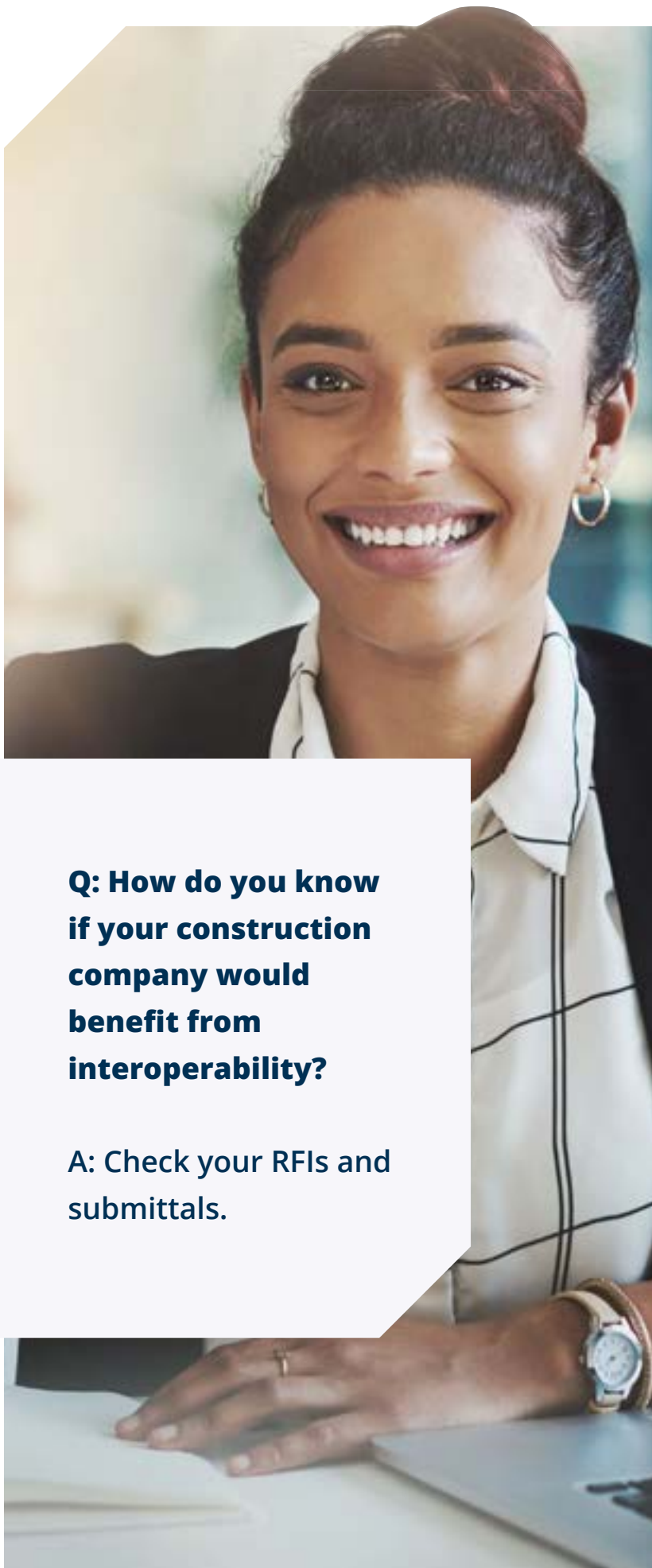
### Native integration

Data is shared between software systems that were built to work together and are inherently compatible

# 5

Whatever systems you're using, they must be connected so your teams can work together quickly, and you maintain a competitive, profitable business.





# What Integrations are Available from Trimble at the Front Edge of Technology



Join Trimble and your construction industry peers as we move into a connected world: Where data flows freely, at your discretion, between systems and workflows. Where you don't have to worry about data imports and exports, where it doesn't matter if applications are compatible, there's no need to share logins, and data security is a given.

In this world, automation is the name of the game, and companies—even competitors—work together.

Trimble believes that openness and interoperability ARE the future of construction management. And we're constantly building new integrations that connect and automate construction workflows: From accounting and payroll, HR management, equipment management, compliance, and more.

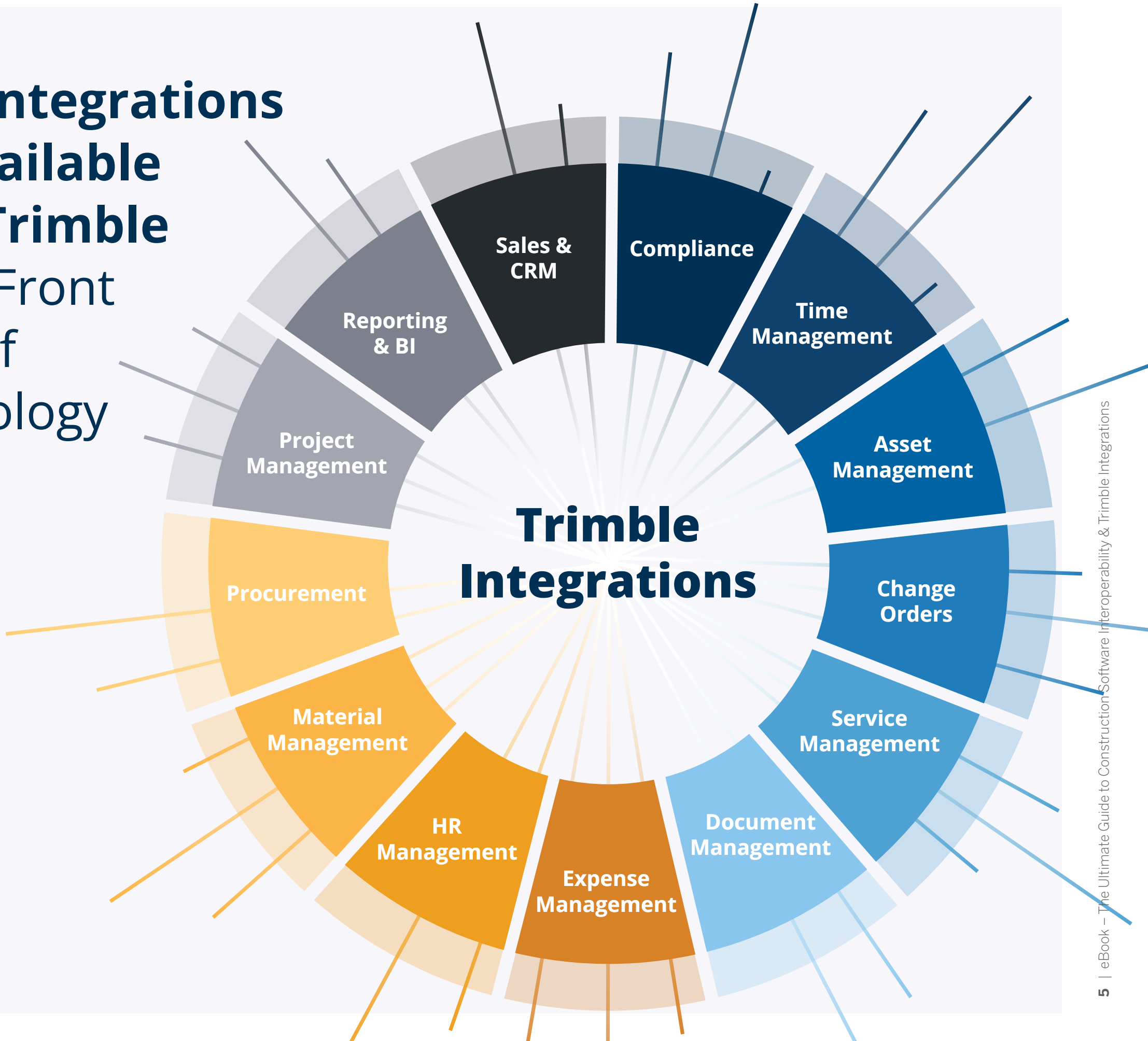


"Operations-driven processes are leading indicators," says Nathan Wood, Executive Director of the Construction Progress Coalition. "RFIs and submittals need to be opened, signed off, processed. How quickly they can move is an indicator of project health."

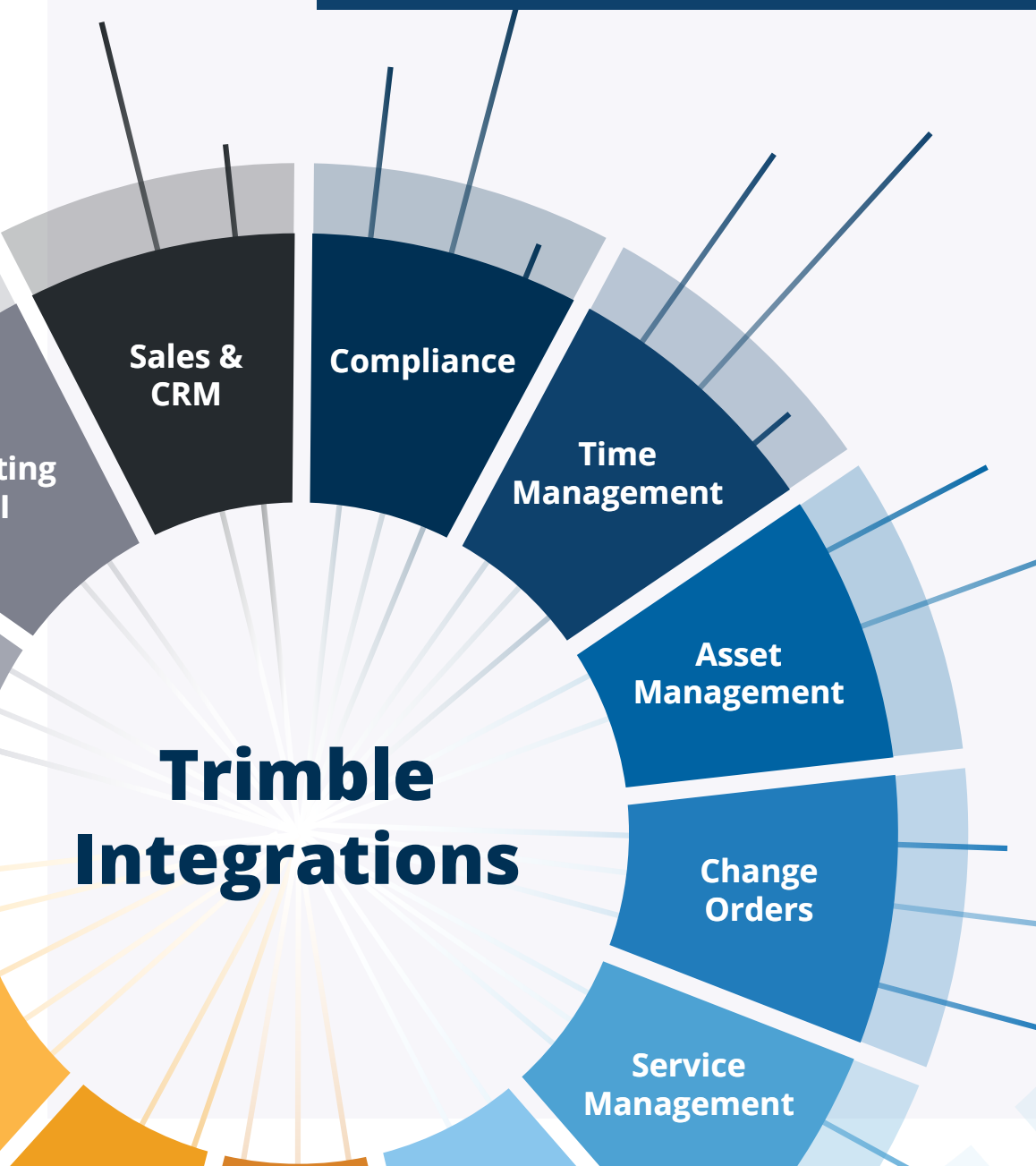
**Q: How do you know if your construction company would benefit from interoperability?**

**A: Check your RFIs and submittals.**

What **Integrations**  
are **Available**  
**from Trimble**  
at the Front  
Edge of  
Technology



Trimble believes that openness and interoperability ARE the future of construction management. And we're constantly building new integrations that connect and automate construction workflows: From accounting and payroll, HR management, equipment management, compliance, and more.



Flip through this ebook and look for the construction technologies\* your company is already using today, and see how interoperability can bring your projects together, and faster than ever.

Trimble Integrations is bringing more critical construction workflows into the information ecosystem all the time.

Read on to see specific field-level data connections between your Trimble Viewpoint ERP and the rest of your construction tech stack.

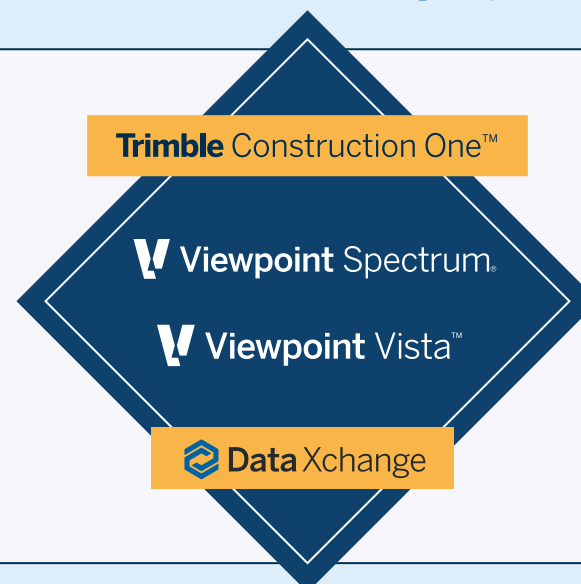
*\*Note that Data Xchange is adding new integrations between construction technologies all the time, so this is not a complete list. Visit the [Trimble Integrations website](#) for a complete, current list.*

# Spectrum and Vista: At the center of the action



Trimble Viewpoint Spectrum and Vista work even better when you connect them to other systems - either through Trimble Construction One and/or third-party connections via Trimble Data Xchange. Those are just some of the many connections you can make with Spectrum and Vista. On the next page, let's see even more integrations.

ProjectSight	Trimble Estimation	Viewpoint Analytics™	Viewpoint Field Management™	Viewpoint Payroll Time Entry™
Supplier Xchange	Traspora	Viewpoint ePayments™	Viewpoint Financial Controls™	Viewpoint Spectrum Service Tech™
Tekla	Viewpoint Team™	Viewpoint Estimating™	Viewpoint HR Management™	Viewpoint Vista Field Service™



--	--	--	--	--	--	--	--	--

# Connect your Construction Software with Trimble Integrations



**Contact Us**

800.333.3197





# Asset Management



Empower your project owners and site managers to maximize the usability of construction assets across multiple sites and buildings with asset management software.

## Featured Integration

Hilti ON!Track with Spectrum or Vista



Reduce data entry efforts by keeping employees, job locations/warehouses and assets in sync. By pushing asset transfer history from ON!Track to your Viewpoint Spectrum or Vista ERP, back office users can bill projects accurately and allocate costs appropriately. Data is refreshed several times a day automatically and equipment information syncs bi-directionally.

Learn more about this and other [Asset Management integrations on Data Xchange](#).





# Change Orders



Change orders can be a big profit driver when properly tracked and billed. When not actively managed, change orders erode profit and trust, and even lead to conflict and expensive litigation.

## Featured Integration Flashtract with Vista



Flashtract does the payment application math for you and your subcontractors. Required documents are generated with all the information needed so you can be confident things are right, every time.

Jobs, vendors, subcontracts and change orders flow from Viewpoint Vista to Flashtract, and approved invoices and related documents flow the other way.

Learn more about this and other [Change Order integrations on Data Xchange.](#)



# Compliance



Track, monitor, and audit business processes to ensure they are aligned with applicable legal, industry, and security requirements, organizational policies, and stakeholder standards.

## Featured Integration myCOI with Vista



Remain compliant and process certificates the smart way. The intuitive self-processing feature makes processing certificates simpler, faster and more accurate.

Eliminate paper trails and manage your certificates, requirements, and third-party relationships in a central repository. myCOI's rules-based engine is built on a foundation of insurance industry logic to automate the COI communication process and ensure you remain protected.

Learn more about this and other [Compliance integrations on Data Xchange](#).





# Document Management



Save time and money with powerful document management tools that provide data extraction, document security, access control, centralized storage, audit trails and streamlined search and retrieval

## Featured Integration

### Viewpoint Business Forms with Spectrum or Vista



Viewpoint Business Forms, powered by National Document Solutions, supplies you with checks and forms that are guaranteed to be compatible with your software. Get the documents you need to take full advantage of your accounting system. We take great pride in the broad diversity of our high security documents, software compatible forms, IRS authorized tax forms and five-star Customer Service to handle your needs.

Learn more about this and other [Document Management integrations on Data Xchange.](#)



# Expense Management



Help employees manage and report their business expenses, while also empowering your finance teams to manage reimbursements, expense reports, and travel requests.

## Featured Integration Corpay with Spectrum or Vista



Corpay provides a suite of electronic solutions to meet all your business payment needs. Customers can fully automate AP payments, simplify travel and expense payment management, establish better controls, and improve transparency on corporate card spend when paying vendors with Viewpoint ePayments. Powered by Corpay, Corporate Card and Expense Management, and Virtual Card services.

Learn more about this and other [Expense Management integrations on Data Xchange.](#)







# HR Management



Manage day-to-day tasks for field and office employees through efficient and scalable digital processes, empowering your HR team members to put their time and resources toward more strategic priorities.

## Featured Integration Viewpoint HR Management with Spectrum or Vista



Automate HR processes and integrate employee information into your ERP with tools like onboarding, individual timesheets, direct deposit, pay stubs and W-2s, reimbursements, certifications and a document library. Viewpoint HR Management reduces manual data entry and speeds up your critical onboarding and employee-related workflows.

Learn more about this and other [HR Management integrations on Data Xchange](#).





# Material Management



Tracking material shouldn't be hard, laborious, forgotten about, or incomplete. Give your team the tools they need to track Material accurately and completely every day.

## Featured Integration SiteSense with Viewpoint Vista



This automatic integration allows field users to process digital material receipts in SiteSense that triggers a PO receipt entry in Vista to close the loop for vendor payment, increasing productivity by an average of 16% by reducing the time to receive material at the construction site or warehouse. Inventory management and digital field request and issuance provide field teams with real-time visibility into actual material availability for their upcoming schedule of work.

Learn more about this and other [Material Management integrations on Data Xchange.](#)





# Procurement



Enable your team to acquire bids for the equipment, materials and construction services they need to bring your project to a successful completion.

## Featured Integration Kojo with Spectrum or Vista

### KOJO

Issue requests for quotes and POs, compare prices and availability across vendors, update the field on order status, and share cost data with the accounting team, all with fewer clicks and manual data entry.

Everything you need to 2- or 3-way match invoices is at your fingertips. You always have an up-to-date view of material cost data, and the field can see for themselves what's in stock and request it.

Learn more about this and other [Procurement integrations on Data Xchange](#).







# Project Management



Give your project teams the tools they need to plan and build schedules for better budget control, quality management, and documentation tracking throughout a project.

## Featured Integration ProjectSight with Spectrum or Vista



Keep operations out of your ERP and keep accounting from needing to do double entry in your project management solution. With this integration, everyone on your team gets relevant, timely and accurate budget and cost project forecasts information to respond to change orders and issues before it is too late. Ensure you get paid on time – and that invoices are paid in a timely manner – to give your management team confidence that your bottom line is protected from a billings and claims perspective.

Learn more about this and other [Project Management integrations on Data Xchange](#).





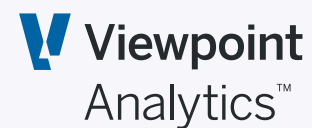
# Reporting & Business Intelligence (BI)



Accurately forecast job cost and revenues with predictive analytics, spot potential overruns and billings issues to reduce margin fade, and mitigate risk through superior insights.

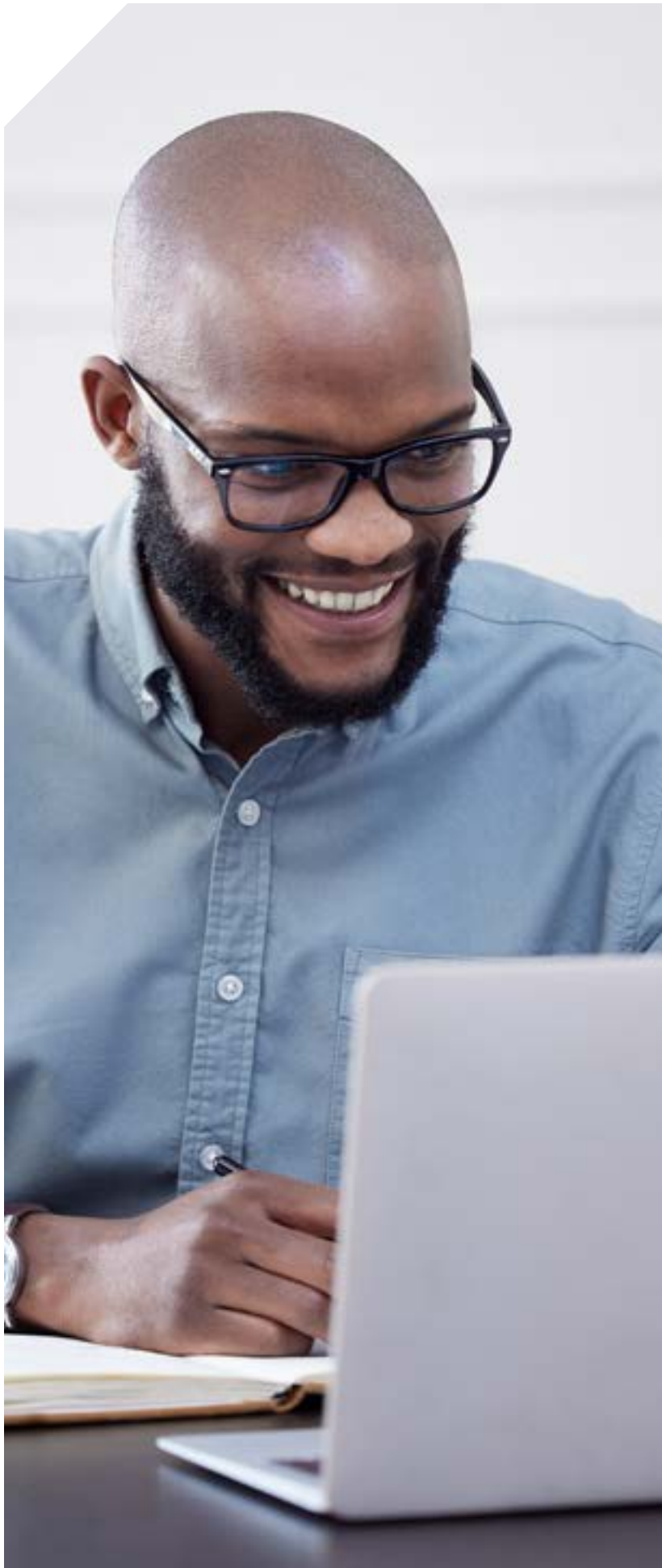
## Featured Integration

### Trimble Construction One Analytics with Spectrum or Vista



Trimble Construction One Analytics is a natively integrated reporting tool built on the web. It helps contractors predict and prepare for optimal project and business performance by accessing and analyzing data captured across the company – in the back office, project teams, and in the field. Analytics intelligently aggregates data for easy-to-consume self-service reporting.

Learn more about this and other [Reporting & BI integrations on Data Xchange](#).







# Sales & CRM



Empower all your departments – including marketing, sales, finance and field teams – with a single, shared view of every customer to achieve higher win rates and lower pursuit costs.

## Featured Integration

### Unanet CRM with Spectrum or Vista



To create winning proposals, your teams need accurate data. But with information siloed in different systems, you spend more time on data collection than strategy. The Unanet + Vista or Spectrum integration automatically brings project, company, contact and personnel data from your Viewpoint ERP into Unanet CRM. With a single source of truth, your teams can access the information and insights they need to create better submittal documentation and marketing collateral, faster.

Learn more about this and other [Sales & CRM integrations on Data Xchange](#)



# Service Management



Give your team the tools they need to manage an effective dispatching process so they can focus on the work that makes money: installing, maintaining or repairing customer assets.

## Featured Integration BuildOps with Spectrum or Vista



Automate the flow of work orders, customer data, invoices, project KPIs and more, from the office to the field – with BuildOps and your Viewpoint ERP.

Your teams can monitor technician success, identify trends and make data-backed decisions. Show the work and back up recommendations. Seamlessly attach photos, videos, PDFs and custom forms directly to quotes and invoices. Report across the metrics you need.

Learn more about this and other [Service Management integrations on Data Xchange](#).





# Time Management



Tracking time shouldn't be hard, laborious, forgotten about or incomplete. Give your team the tools they need to track time accurately and completely every day.

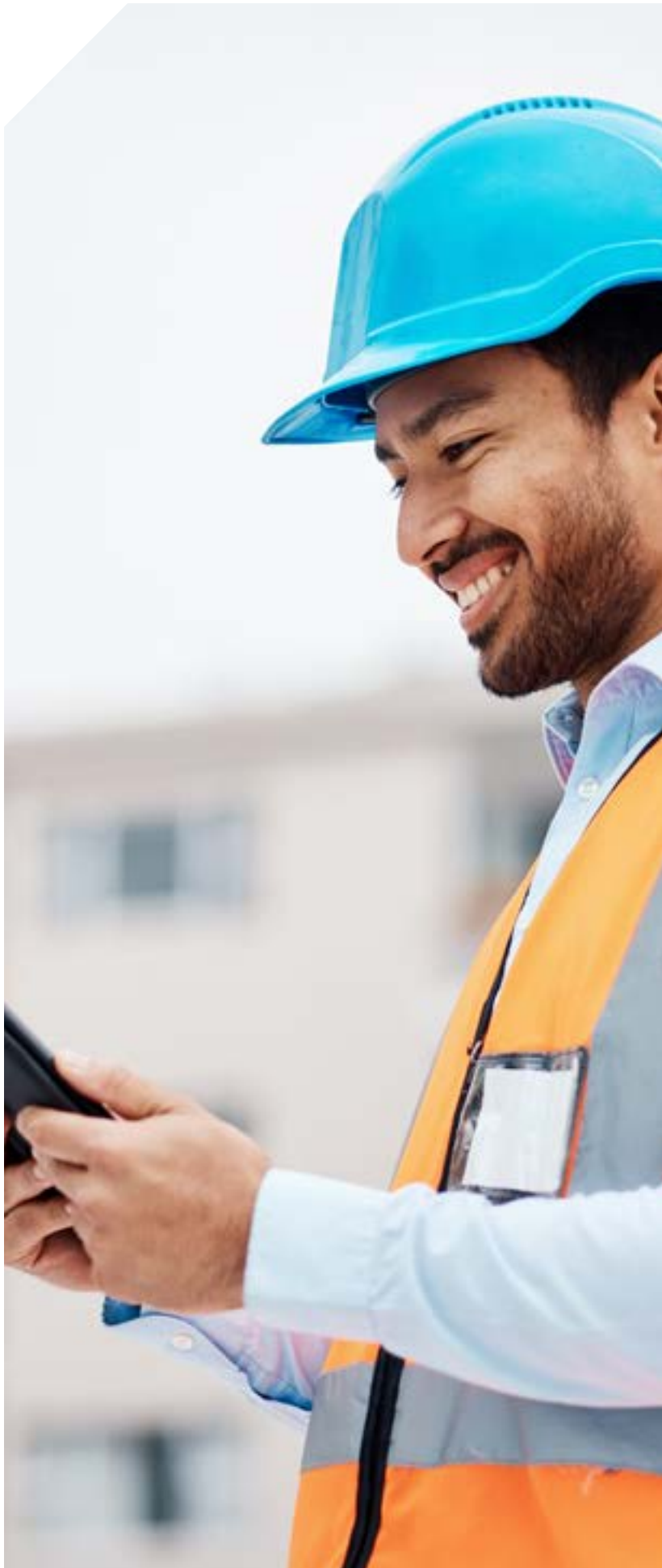
## Featured Integration Raken with Spectrum or Vista



Bulk upload your crews and allocate hours to entire teams at once. Easily add members right from the app or edit hours for an individual who stayed late or got to work early. Roll over hours for duplicate work each day, and export time reports for smooth payroll processing and time card management.

Minimize the chance for disputes over which hours counted in which category – just make the changes in the app as they happen in the field and the rest is done automatically.

Learn more about this and other [Time Management integrations on Data Xchange](#)



# Connect Your Tech with Trimble Construction



## Did you recognize any programs your construction team uses?

Contact us to see how your tech stack can be better integrated. connect them for faster, more accurate workflows. And learn more about Viewpoint Spectrum and Viewpoint integrations.

## Contact us

Discover more about Viewpoint Spectrum and Viewpoint integrations

[www.viewpoint.com/contact-us](http://www.viewpoint.com/contact-us)

Phone 800.333.3197

## Resources

- [Data Xchange](#): Find all of our third-party connections in one place.
- [Trimble Construction One](#): See how numerous native extensions and in-house integrations make our connected construction solution suite the industry leader.
- [Viewpoint Spectrum](#): Dive deeper into this fast and flexible solution.
- [Viewpoint Vista](#): Learn more about the financial flagship of construction.