



A TRIMBLE COMPANY

# B2W Schedule

## RESOURCE SCHEDULING & DISPATCHING



### OPTIMIZE RESOURCES TO KEEP PROJECTS ON BUDGET AND ON SCHEDULE

- Coordinated, collaborative scheduling and dispatching across workflows
- One, central system
- Real-time, enterprise-wide visibility and access
- Mobile tablet and desktop functionality

B2W Schedule replaces the disconnected mix of spreadsheets, phone calls, whiteboards and messages with a single solution for coordinated, collaborative scheduling and dispatching of resources across job locations and over time. Individuals manage scheduling based on their area of responsibility. Users can view, enter and manage assignments and needs in real time. This puts employees, equipment, materials and trucks in the right place at the right time, reducing inefficiencies and downtime.

### Enhance visibility with intuitive, customizable multi-day interfaces for scheduling and dispatching

B2W Schedule provides a day-by-day view of assignments, needs and orders. Managing crews, employees, equipment or trucks associated with these items can be done with drag-and-drop simplicity, and assignments can be viewed or planned as far into the past or future as needed. Users can apply multiple filters and groupings to customize how they view the schedule according to specific roles and requirements. An unlimited number of these user-defined views can be stored, and security restrictions can be set up to determine which views can be seen by which employees.

The screenshot displays the B2W Schedule software interface. On the left, there's a 'Job Sites' sidebar with a calendar view for February 2020, highlighting the week of February 10th to 16th. The main area shows a table with columns for days (Mon, 2/10 to Thu, 2/13) and rows for different job sites and resources. Resources listed include 'RT101 Station 10', 'Excavation [C0005]', 'Sophia Long [13001]', 'Kylie Tapia [13046]', 'CAT560 [CAT 560 Loader]', 'Elena Morrow [13059]', 'Laborer', 'Bank Run [BANK]', 'CAT963 [CAT 963 Loader]', 'Eliana Lowe [13077]', '1007 [Yamaha Golf Cart]', and 'Materials'. The right sidebar shows 'Orders and Needs' with a list of items like 'Hilton', 'Medium Dozers', 'Hilton Park Ramp Phase 3', and 'Paver Operator'.

### Streamline communication with system notifications

B2W Schedule information can be distributed to stakeholders through a single click by utilizing user-generated notifications. Users can also configure system-generated notifications for certain activities that happen while away from the software, like a new need for a piece of equipment or order submitted for a material on a job site.

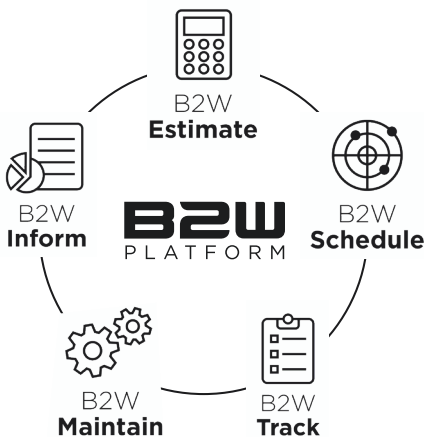


A TRIMBLE COMPANY

## ADDITIONAL FEATURES

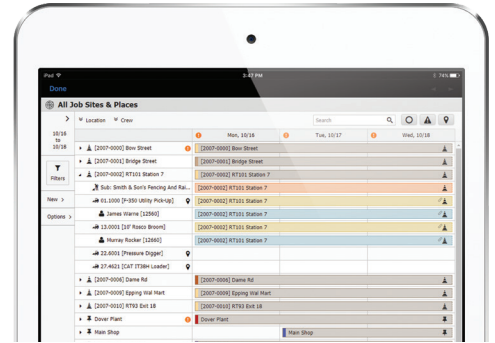
- User initiated email and SMS notifications containing important assignment details specific to each recipient
- Production Targets allow specific labor and productivity expectations for each individual day to be set and communicated to the B2W Track field log
- Intuitive, drag-and-drop interface
- Automated conflict identification and resolution
- Management of material mass hauls and deliveries
- Trucking assignments and notifications
- High-value reporting and dashboards
- Role based security

*B2W Software empowers and inspires heavy civil construction companies to win more work and complete it more profitably. The company's unified platform connects resources, workflows and data and includes applications to manage estimating, scheduling, field tracking, equipment maintenance, data capture and business intelligence.*



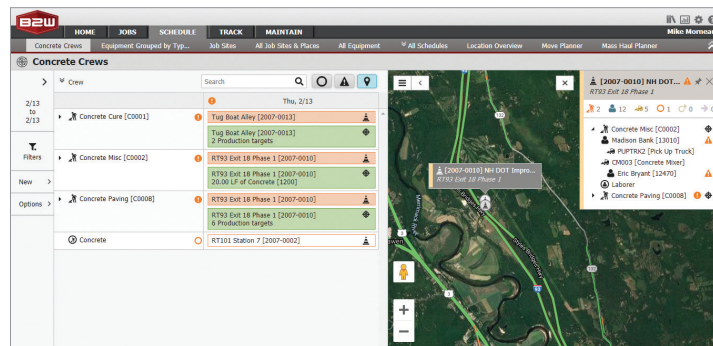
## Increase collaboration with desktop and mobile tablet access

From resolving conflicts and creating needs to filling assignments and generating moves, B2W Schedule keeps everyone in touch and up to date – even when they are on the move.



## Map view – see where assets are physically scheduled

The advanced map function lets users view job sites and equipment locations in relation to each other geographically, so they can schedule resources, fill needs and move equipment with maximum efficiency. They can also create boundaries with geofencing and incorporate real-time information on traffic, accidents and road construction delays.



## Dedicated views for mass haul trucking, equipment moves and deliveries

Whether it is planning out stops for equipment moves or deliveries on the move planner, or assigning dozens of trucks to an order on the mass haul planner, B2W Schedule has single day, dedicated views for assigning and notifying resources which have been assigned to orders.

## Unified with B2W Track

Resource needs created in the B2W Track field tracking solution are instantly visible and actionable in B2W Schedule. B2W Track users also gain visibility into available and assigned resources and they can create field logs using assignments from B2W Schedule.

## Unified with B2W Maintain

Knowing when an asset is down for repair, scheduled for maintenance or expected to be back in service is vital for the dispatching and scheduling team. This information from B2W Maintain can be accessed in real time within B2W Schedule when a company uses both B2W applications.