



# Trimble Fabrication Essentials

MECHANICAL ITMs FOR YOUR CAD WORKFLOWS

Reduce time spent creating and managing content and increase team collaboration with the Trimble Fabrication Essentials solution. Trimble's managed mechanical ITM content subscription for detailers and estimators working in **Autodesk® Fabrication** or using Fabrication Parts in Revit. Trimble's Fabrication Essentials solution offers ITM content along with MEPcontent Manager and Trimble Connect for collaborating with key stakeholders across projects. From sharing configurations to tracking usage of world-class managed ITM content over time, Fabrication Essentials enables ITM users to drive consistency and quality into their workflows.

With MEPcontent Manager, users can securely manage and share their ITMs and project configurations with other project stakeholders. Also included is Construction Analytics, which provides users with the ability to see ITM usage over time and across projects to create more predictability and better outcomes across projects.

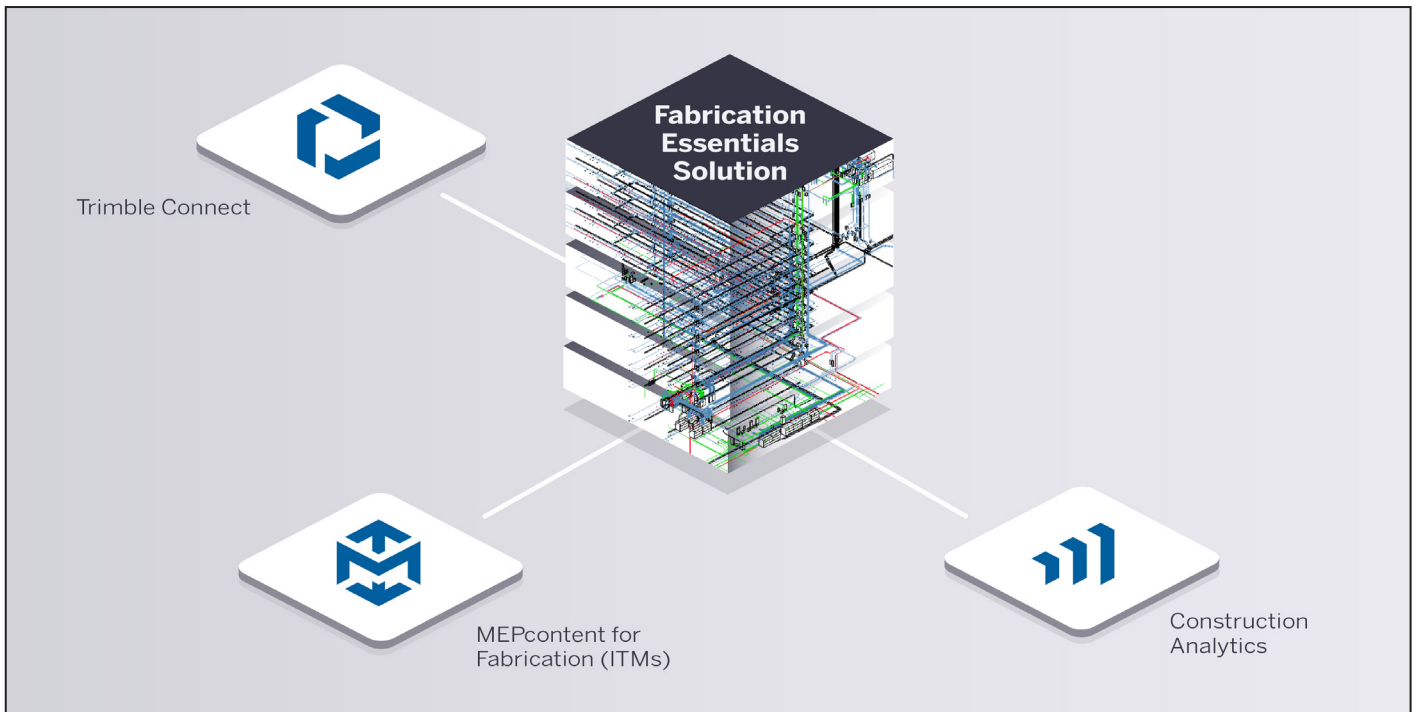
## WHAT IS INCLUDED IN THE FABRICATION ESSENTIALS BUNDLE?

- ▶ MEPcontent for Fabrication (ITMs)
- ▶ MEPcontent Manager
- ▶ Trimble Connect Business Premium
- ▶ Construction Analytics

## Top Benefits

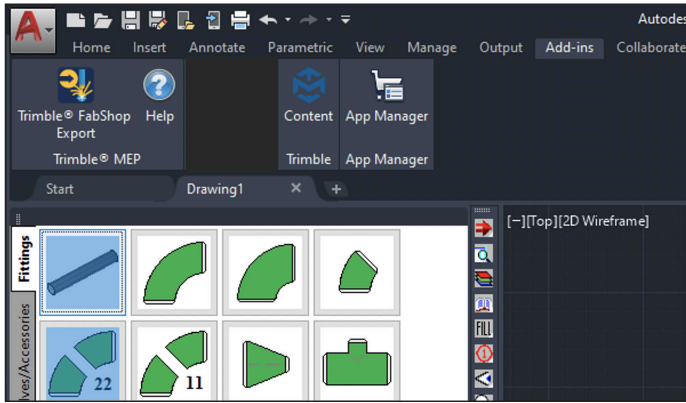
- ▶ **One subscription helps you to optimize** key ITM CAD and Estimation workflows across Autodesk Fabrication and in Revit using Fab Parts.
- ▶ **Save time** managing manufacturer content.
- ▶ **Create constructible models** and detail with confidence using the included up-to-date manufacturer parts and fittings.
- ▶ **Increase collaboration** and coordination of items and configurations used across projects.
- ▶ **Improved project visibility** for your team, decision makers, and stakeholders.
- ▶ **Insights into pre-construction** activities with Construction Analytics help you make better decisions.

**One subscription helps you to optimize key ITM CAD and Estimation workflows across Autodesk Fabrication and in Revit using Fab Parts.**



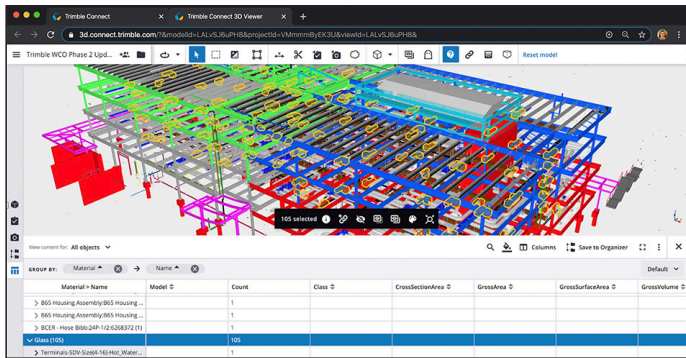
# Trimble Fabrication Essentials

## MECHANICAL ITMs FOR YOUR CAD WORKFLOWS



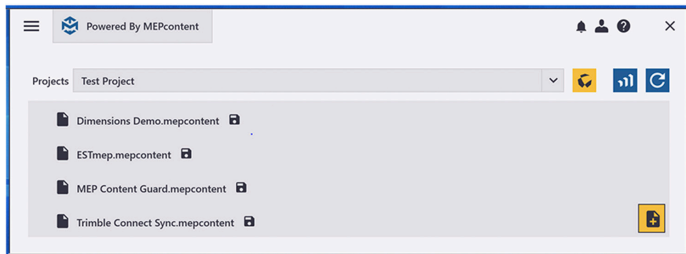
### MEPCONTENT FOR FABRICATION

Trimble's MEPcontent for Autodesk® Fabrication delivers the world's largest content package of managed mechanical ITM content and system configurations for the Autodesk Fabrication platform, packaged with fully button-mapped configurations and loaded with managed labor and pricing values. With MEPcontent for Fabrication, users have access to the accurate and enriched ITM content needed to power their CAD and estimation workflows with improved accuracy and constructibility.



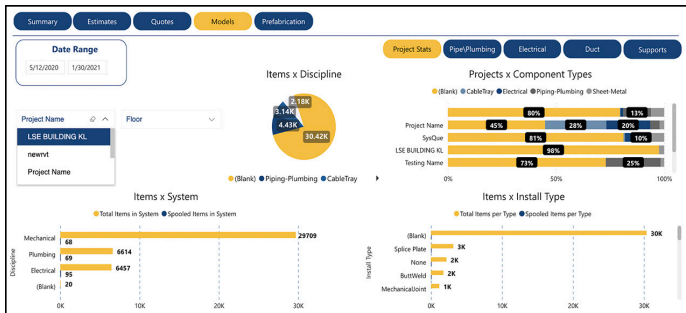
### TRIMBLE CONNECT

Trimble® Connect® is our open collaboration tool that connects the right people to the right data at the right time on any device - enabling informed decision making and enhancing project efficiency. Purpose built to serve the single source of truth for your project, Trimble Connect helps connect workflows and simplify integration, collaboration, and coordination between the trades.



### MEPCONTENT MANAGER

MEPcontent Manager comes with MEPcontent for Fabrication and enables management and sharing of project configurations and ITMs across users. With MEPcontent Manager, users have better control around sharing and distribution of project configurations and ITM content. MEPcontent Manager also acts as a launching pad to Trimble Connect and Construction Analytics, with both being embedded directly into the tool.



### CONSTRUCTION ANALYTICS

Construction Analytics provides key insights into product and manufacturer selection across projects and users. Leveraging Construction Analytics, organizations can drive quality and consistency across projects, helping to create better, more consistent results.

TRIMBLE INC.  
10368 Westmoor Drive  
Westminster, CO 80021  
USA

858-775-9931  
mep.trimble.com/