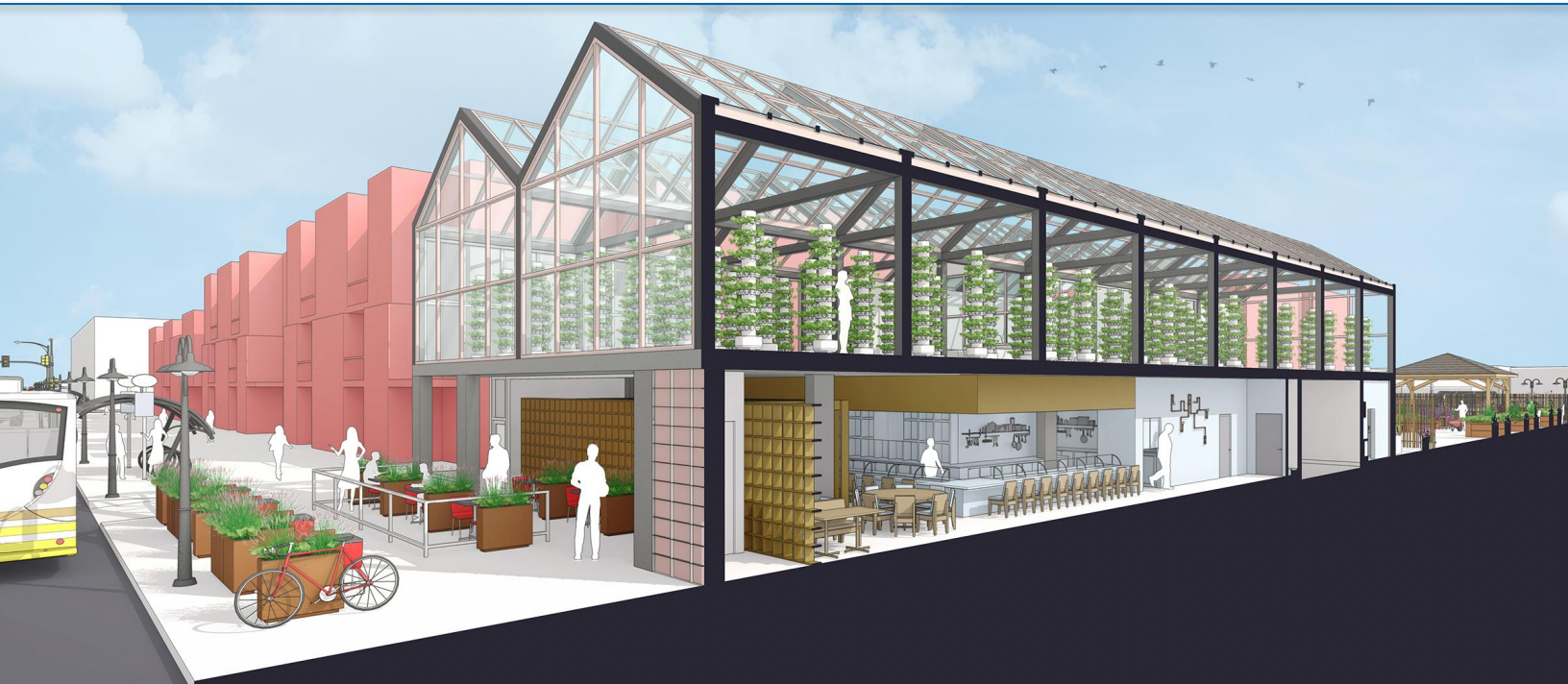




# Welcome to SketchUp

Your toolkit of essential shortcuts and must-have extensions to get you on your way.



# Content guide

Getting started

Extensions

[General tools](#)

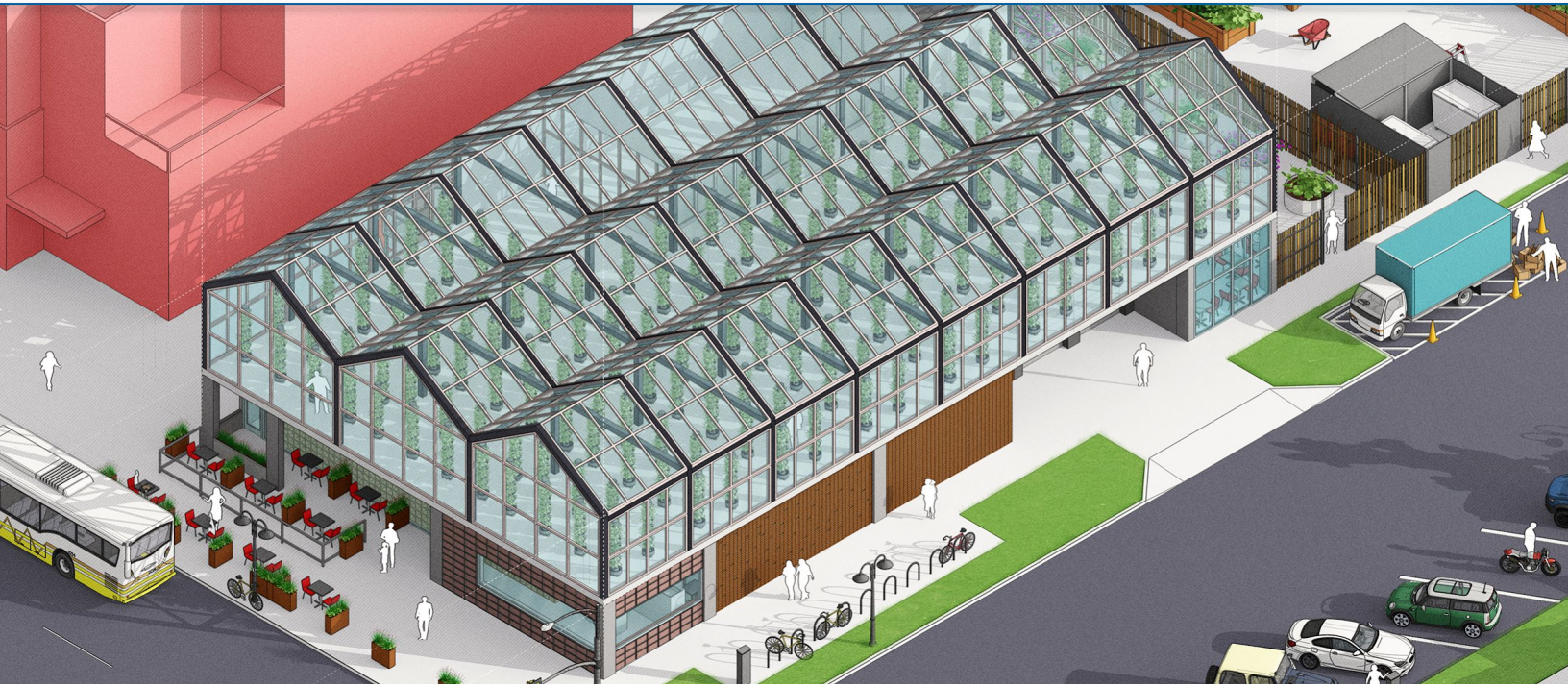
[BIM & Engineering Tools](#)

[CAD Imports & Making volumes](#)

[Terrain & Advanced Modeling](#)

[Rendering & Textures](#)

[Plugin Resources & Websites](#)



## Getting Started

One of the best things about SketchUp is how easy it is to get started. In many cases, SketchUppers are ready to start using it as soon as it is installed.

However, if you are interested in getting trained up, we have a ton of learning resources listed to the right and throughout this document.

We think that this document is a great collation of resources that will help you be as productive as possible, as quickly as possible.

### Online resources

[SketchUp Campus](#)

[SketchUp Pro Basics Videos](#)

[SketchUp Blog](#)

[Our Forum](#)

[Skill Builder Videos](#)

[SketchUp Talk Podcasts: RSS/iTunes](#)

### Extension resources

[Installing Extensions](#)

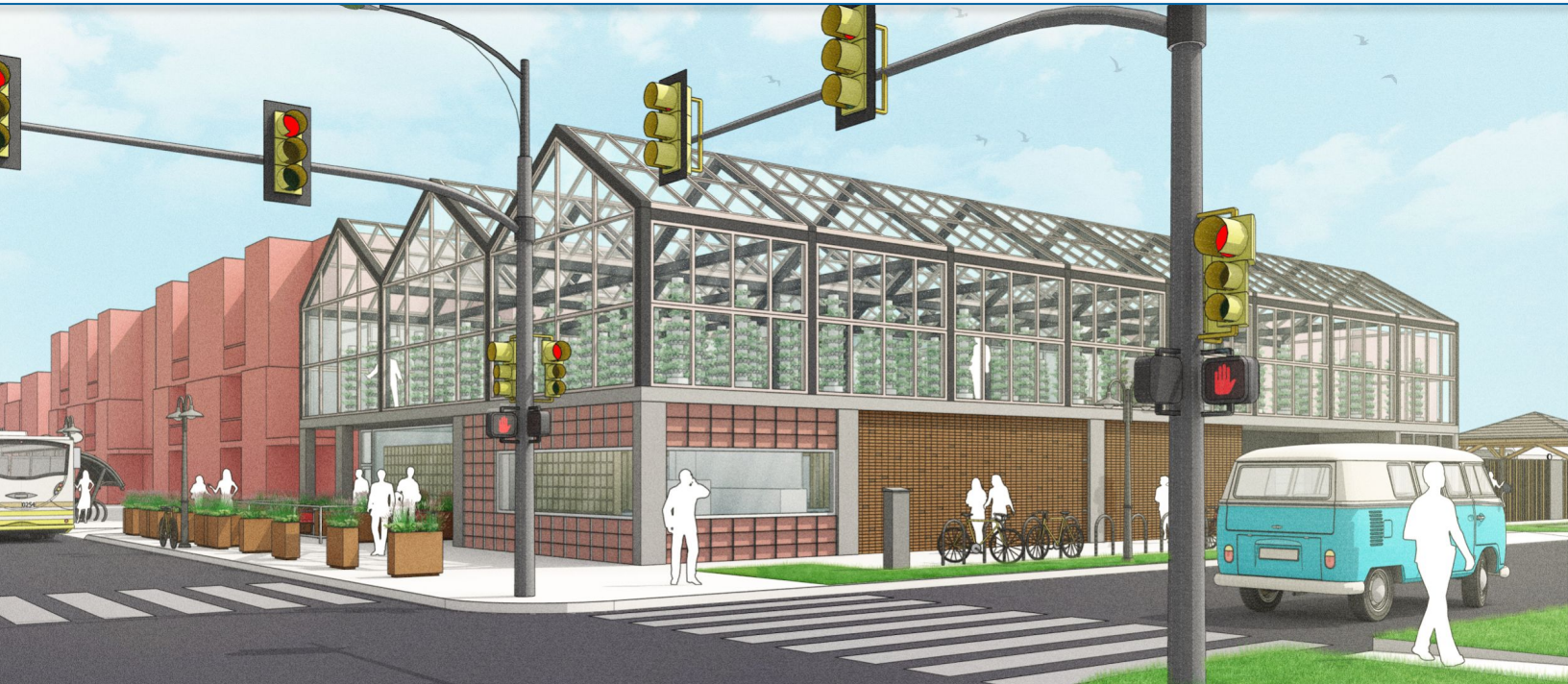
[Essential Extensions](#)

[SketchUcation Plugin Store](#)

If you are interested in a larger, authorized training session, please contact sales for more information, or keep an eye out for upcoming events near you.

## Extensions & Resources

Supercharge your SketchUp workflow.



## Extensions

Whatever you do with SketchUp, odds are that there is an extension out there that will help you to do it better/quicker/easier. Extensions are bits of software that run inside of SketchUp that give you additional functionality within the native design environment.

### Extension Warehouse

Check out our online repository of extensions, [Extension Warehouse](#), for a full list of certified extensions available to you.

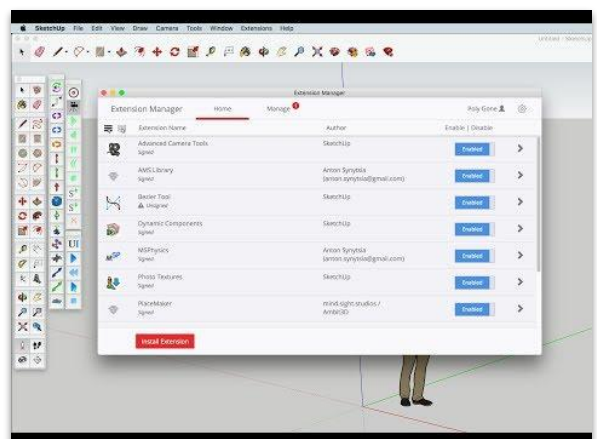
If the Extension Warehouse is not quite enough for you, you may want to take a look at the extensions available on the [SketchUcation Plugin Store](#) (note you will need to [register for a free account](#) to download from the Plugin Store).

### Not sure where to start?

750+ extensions might leave you feeling overwhelmed. We've shortlisted some essential SketchUp extensions that will improve the productivity of your team. Some of these plugins are free, but we have indicated the commercial extensions with a (C):

### Installing extensions

For information on installing extensions, check out [this video](#) for step-by-step instructions.



## Working with CAD Imports & Making Volumes

### StrayLines

Label, select, delete or show all the open-ended line segments in a drawing.

### Make Face

Fills line drawings with faces.

### Fredo Tools

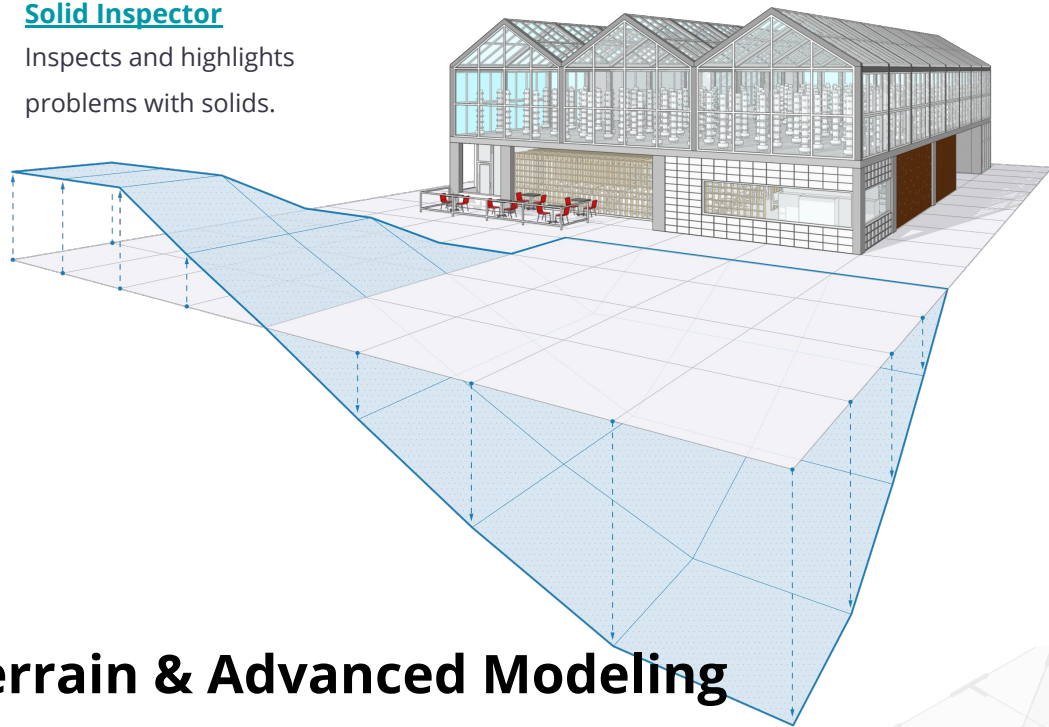
A collection of various inspection and simple manipulation tools. In particular, Edge Inspector is a handy tool for inspecting edge connections.

### Edge Tools

Suite of tools to simplify edges, close gaps, cleanups and more

### Solid Inspector

Inspects and highlights problems with solids.



## Working with Terrain & Advanced Modeling

### TopoShaper

Generates terrains from iso-contours, that is, contours which have a constant or quasi-constant altitude.

### Extrude Tools

A varied toolset for extruding edges into meshes.

### CurviLoft

Dedicated to generating surfaces from contours through Loft and Skinning.

### CutNfill (C)

It calculates Cut and Fill from two overlaid terrain-mesh solid groups. Also add Skirts to selected meshes to aid the Cut and Fill process.

### FredoScale

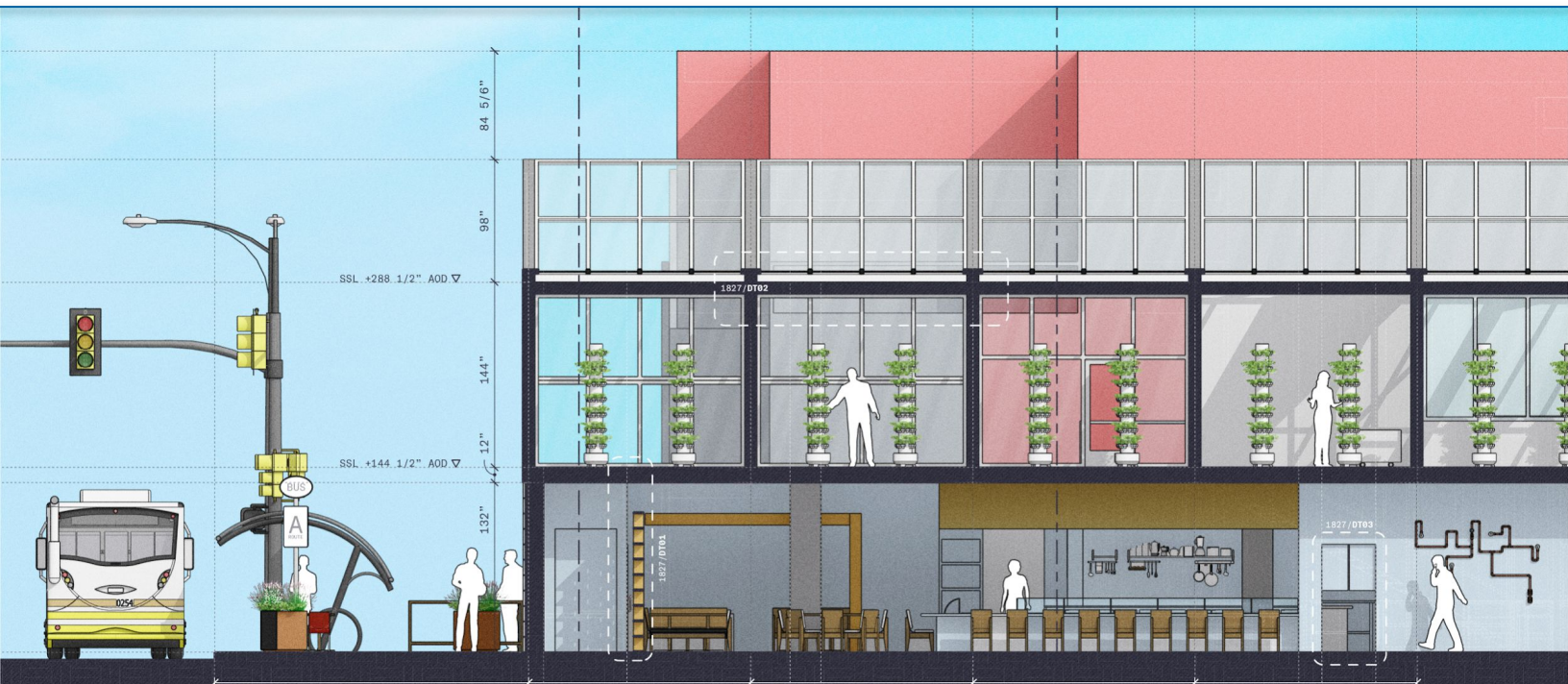
Interactively apply a number of geometric transformations, such as Scaling, Tapering, Stretching, Plane Shear, Twisting, Bending, and Rotation.

### Artisan (C)

Subdivision, sculpting, and soft selection tools for artists, designers and landscape architects.

### Joint Push Pull

Performs push/pull on multiple faces in one operation. JPP can maintain the continuity of the offset surfaces (mode joint push/pull). This is useful to thicken non-planar surfaces.



## General tools

A wide range of tools to make complex or repetitive tasks a piece of cake.

### [Selection Toys](#)

Offers a wide range of selection modifiers, filter out all edges, faces, etc. Lets you quickly select entities with similar properties such as material & layer orientation.

### [CleanUp](#)

Cleans up and optimizes your SketchUp model.

### [Fredo6: Bezier Spline](#)

Draws a variety of Polylines, Bezier and Spline curves, all in 3D.

### [Q JS Align Toolbar](#)

Aligns objects along the three main axis, x, y, and z.

### [RoundCorner](#)

RoundCorner rounds the edges and corners of 3D shapes along a 2D profile, in three modes: Round corners, Sharp corners and Bevel.

### [JointPull](#)

Extrusion of faces with various methods.

### [MaterialResizer](#)

Finds and resizes materials used in the model.

### [Eneroth Reference Manager \(C\)](#)

Manage linked models in SketchUp.

### [Layers Panel](#)

Designed to be very similar to Photoshop's layers panel. It adds the ability to group layers, sort them, lock them, hide/collapse groups, etc.

### [Weld](#)

Join edges and curves into "polylines".

### [DropGC](#)

Drop groups/components to face below



## BIM & Engineering Tools

Automate, populate, specify. These extensions will make your SketchUp model that bit smarter, and ready to play with advanced BIM tools.

### [3Skeng \(C\)](#)

3skeng is an extension for the design & documentation of MEP and 3D piping and steel structures.

### [Profile Builder \(C\)](#)

Lightspeed parametric modeling of intelligent component assemblies.

### [PlaceMaker \(C\)](#)

Add instant context to your model by importing OpenStreetMap roads, buildings, paths, water bodies, trees, and high-res aerials.

### [PlusSpec \(C\)](#)

Think BIM + VDC + Parametric modeling + Estimate.

### [ConDoc Tools \(C\)](#)

Automate and simplify the creation of construction documents in SketchUp Pro and LayOut.



## Rendering

Take your design presentations to the next level with a wide range of native rendering extensions. [Full list of available rendering extensions.](#)

### [V-Ray \(C\)](#)

V-Ray for SketchUp is a professional lighting and rendering tool for architects & designers. *Included in a Studio subscription.*

### [Enscape \(C\)](#)

A real-time rendering plugin that creates remarkable visualizations with one click.

### [SU Podium V2.5 Plus \(C\)](#)

SU Podium is a high-quality, photorealistic, rendering plugin for SketchUp.

### [Lumion LiveSync for SketchUp \(C\)](#)

Lumion offers real-time, photorealistic renderings of your SketchUp model.

### [Thea Render \(C\)](#)

Thea Render is a physically-based photorealistic renderer of high quality.

### [Twinmotion](#)

Immersive visualization software that renders SketchUp models in real time.

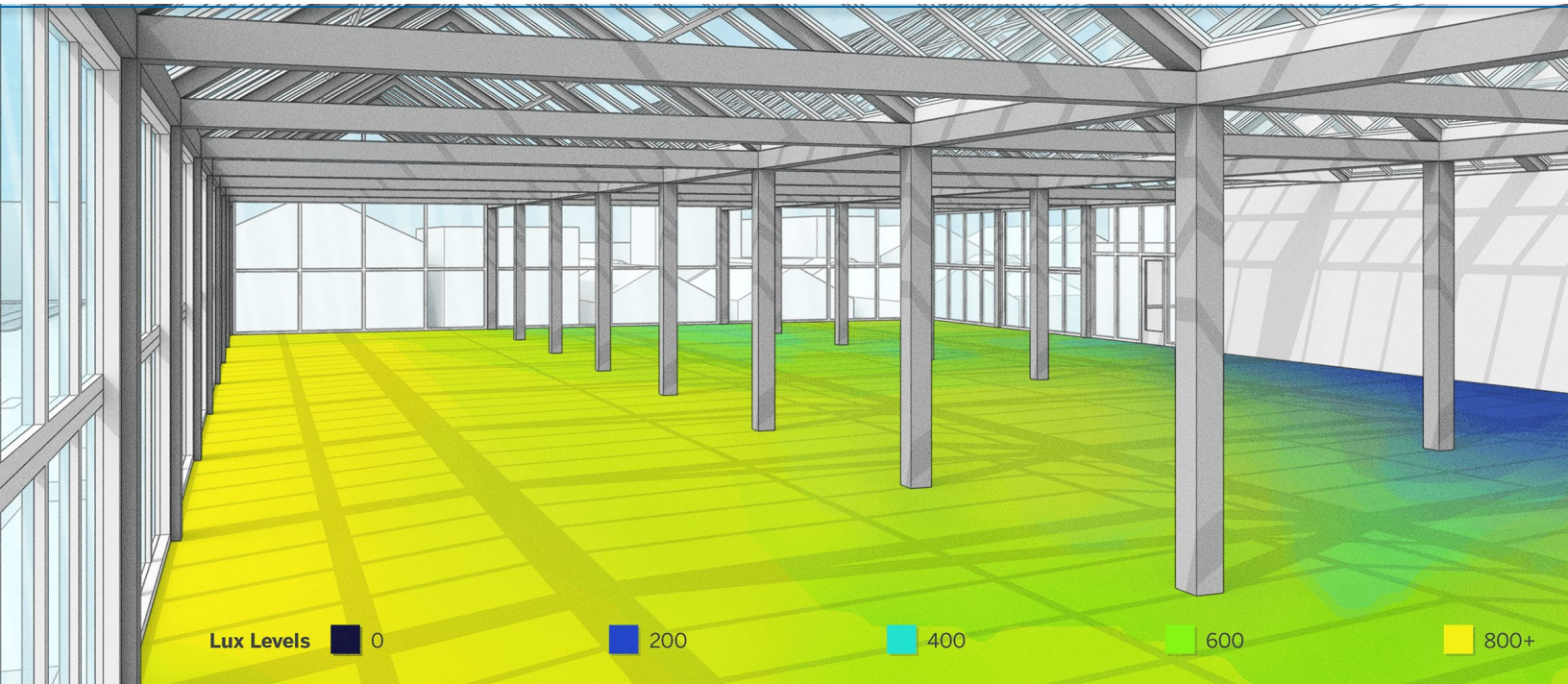
## Rendering Prep & Working with Textures

### [V-Ray Tools](#)

This extension contains a tool to set the camera aspect ratio so one can get the same scene aspect ratio from different computers. Without it, different monitor sizes or number of toolbars would affect the output image.

### [Material Tools](#)

The Material Tools plugin lists all materials in the model ordered by their texture size. This means that you could way one could pinpoint which textures are large.



## Extension Resources & Websites

Although the SketchUp Extension Warehouse is your first stop for extensions that are built off of our robust C API, the SketchUp community offers many more useful extensions on other platforms outlined below.

[SketchUp Extension Warehouse](#)

[SketchUcation Plugin Store](#)

[Smustard](#)

[RubyLibrary Depot](#)

### How to install Extensions

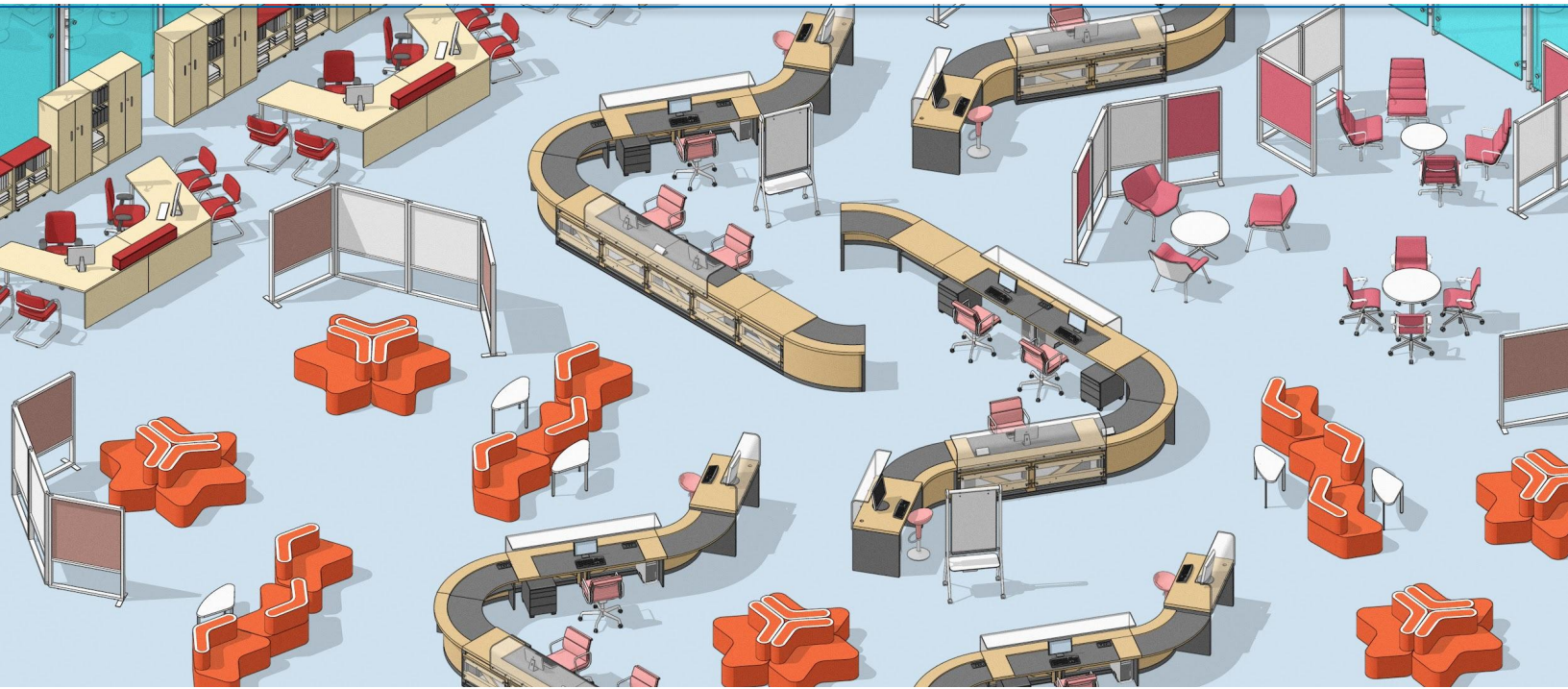
#### [Plugin Installation](#)

Visit this page for simple instructions on how to install a SketchUp Ruby plugin script.

### Interested in developing your own extension?

#### [SketchUp API](#)

This page gives you details about how to develop your own Ruby script, access to SketchUp's API, and links to securely encrypt and publish your extension.



## Learning Resources



[\*\*SketchUp Blog >\*\*](#)

SketchUp's blog hosts our latest written content.



[\*\*SketchUp TV >\*\*](#)

SketchUp's official YouTube channel.



[\*\*SketchUp Campus >\*\*](#)

SketchUp's formal learning platform.

## Connect with us

