



# VDC Pro+ Solution

Flexibility for every step of your VDC workflows

Now everything you need to design, fabricate, plan and collaborate on real-world constructible models comes in one value-packed subscription — introducing Trimble's VDC Pro+ solution, the all-in-one design and detailing solution for MEP detailers who want the ultimate flexibility in the detailing platform and the diversity of constructible content they use.

Combining Trimble's industry-leading MEP design and detailing software, managed manufacturer digital content, collaboration tools, and analytical insights, the VDC Pro+ subscription provides MEP detailers with everything they need to plan and build constructible models and empower the larger project team. Accurately and efficiently create digital 3D models in AutoCAD, AutoCAD MEP, or Revit, distribute them to your stakeholders, and get powerful insights into your design/detailing activities to create a powerful, data-driven project execution plan — all with one subscription.

## WHAT'S INCLUDED

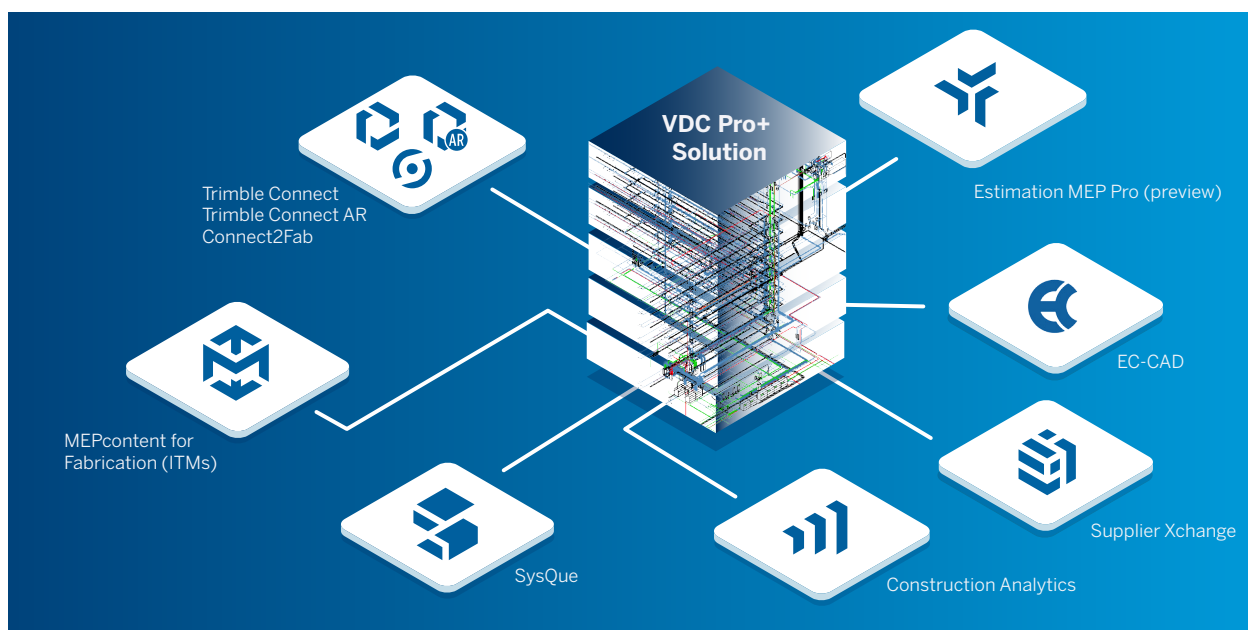
- ▶ Trimble SysQue Detailing Software for Revit\*
- ▶ Trimble EC-CAD Detailing Software for AutoCAD MEP\*
- ▶ ITMs (MEPcontent for Fabrication)
- ▶ Trimble Connect Business Premium
- ▶ Construction Analytics
- ▶ Estimation MEP Pro (preview)
- ▶ Trimble Connect2Fab
- ▶ Trimble Connect AR
- ▶ Supplier Xchange

\* AutoCAD, AutoCAD MEP, and Revit not included with VDC Pro+ subscription; must be purchased separately.

## Benefits

- ▶ One subscription to meet your detailing platform (AutoCAD, AutoCAD MEP, and Revit) and project requirements
- ▶ Flexibility to revisit old projects on other platforms
- ▶ Save time managing manufacturer content
- ▶ Create constructible models and detail with confidence using the included up-to-date manufacturer parts and fittings
- ▶ Digital workflows to connect your model to estimation, procurement, and fabrication departments.
- ▶ Increase collaboration across your entire team, from design to field, regardless of the CAD platform they use
- ▶ More project visibility for your team, decision makers and stakeholders
- ▶ Enhanced insight into pre-construction activities helps you make better decisions
- ▶ Better project execution with detailed information from the coordinated model

**AutoCAD to Revit. CADmep to SysQue. One subscription gives you the freedom to choose the application to meet the requirements of the job.**



# VDC Pro+ Solution

Flexibility for every step of your VDC workflows

## SYSQUE

Trimble SysQue detailing software enables detailers to design LOD 400 constructible models in Autodesk® Revit® with the world's largest library of real world, manufacturer-specific MEP content. Leveraging MEP-specific design and speed tools, millions of parts and fittings that are dimensionally correct along with connector functionality, SysQue enables your model to be fabricable and used for layout.

## EC-CAD

Trimble EC-CAD detailing software enables designers and contractors to design in Autodesk AutoCAD MEP® with actionable manufacturer data in their 3D models and true-to-life fabrication accuracy right out of the box.

## MEPCONTENT FOR FABRICATION

Trimble's MEPContent add-in for Autodesk Fabrication delivers the world's largest managed ITM content and system configurations for the Autodesk Fabrication platform, all fully button-mapped and loaded with managed labor and pricing values. With MEPContent for Fabrication, users can easily manage their fabrication databases shared with team members, all with powerful administrative controls, driving consistency and quality in their estimating and modeling workflows.

## TRIMBLE CONNECT

Trimble® Connect® is our open collaboration tool that connects the right people to the right data at the right time on any device - enabling informed decision making and enhancing project efficiency. Purpose built to serve the single source of truth for your project, Trimble Connect helps connect workflows and simplify integration, collaboration, and coordination between the teams.

## CONSTRUCTION ANALYTICS

Construction Analytics gives MEP contractors key insights into their pre-construction activities. Utilize Construction Analytics to see key information such as project status, preferred manufacturers and overall manufacturer selection across projects, and overall system utilization and parts used within systems across projects, and track both design and prefabrication without going onto the shop floor.

## ESTIMATION MEP PRO (PREVIEW)

Estimation MEP Pro (preview) is a web-based estimating software that enables the model-based estimating workflow in the VDC Pro+ solution. With this exclusive inclusion, you can send the model information from SysQue directly to Estimation MEP with the click of a button. A populated estimate is automatically created in Estimation MEP complete with a list of materials that contain a description, size, price and labor hours from Trimble's industry-leading MEPContent database.

## TRIMBLE CONNECT2FAB

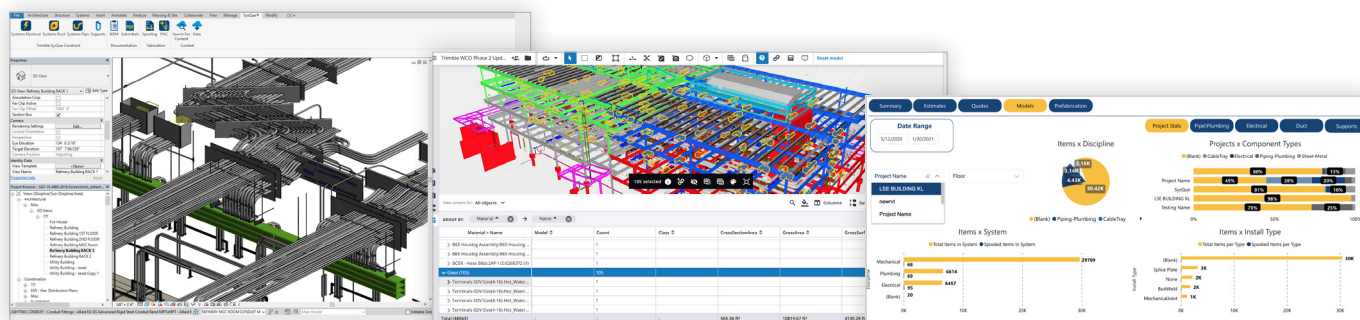
Connect2Fab is an application within Trimble® Connect that provides a seamless connection between design and fabrication workflows, eliminating cumbersome workflows while minimizing errors and waste. By providing unparalleled visibility into the spools that are being sent to the shop and into the field, Connect2Fab allows shop managers, field managers, BIM coordinators, and shop employees to execute data-driven decision making throughout a project's lifecycle.

## TRIMBLE CONNECT AR

Trimble® Connect® AR is an augmented reality application that enables contractors to bring their BIM data to the job site. Integrating with Trimble® Connect and the Trimble® Mixed Reality portfolio, Connect AR gives project managers, engineers and contractors the ability to visualize 3D models in real life, on site, and in context at 1:1 scale. The model can be accessed via a smart phone or tablet, using the Trimble® Connect cloud-based collaboration platform.

## SUPPLIER XCHANGE

Supplier Xchange is a digital pricing and procurement service powered by shared item-level project data between construction teams and their preferred suppliers across the pre-construction workflow in one centralized, web-based application.



Trimble® SysQue

Trimble® Connect®

Construction Analytics

**NORTH AMERICA**  
Trimble Inc  
10368 Westmoor Drive  
Westminster CO 80021  
USA

Trimble Inc  
9131 Keele St.  
Vaughan, ONT,  
Canada  
866-799-6673 Phone