



Estimation Desktop Essentials

Essential Tools for Mechanical, Electrical & HVAC Estimators in One Cost-Effective Subscription

Whether you are an electrical, mechanical, plumbing or HVAC contractor, Estimation Desktop Essentials provides the easy-to-use, trade-specific tools you need to produce detailed estimates, streamline workflows, facilitate collaboration with team members and lower the costs associated with bidding—all in one value-packed subscription.

With Estimation Desktop Essentials you get access to Trimble's Estimation Desktop software, integrated digital takeoff, material pricing, submittal management and collaboration tools. Plus, your subscription includes an exclusive preview of Trimble Estimation MEP Pro web-based estimating software.

The Estimation Desktop Essentials subscription helps you stay focused and efficient by managing everything related to your estimates to get you to bid day and help you win more jobs and maximize your profit.

WHAT'S INCLUDED

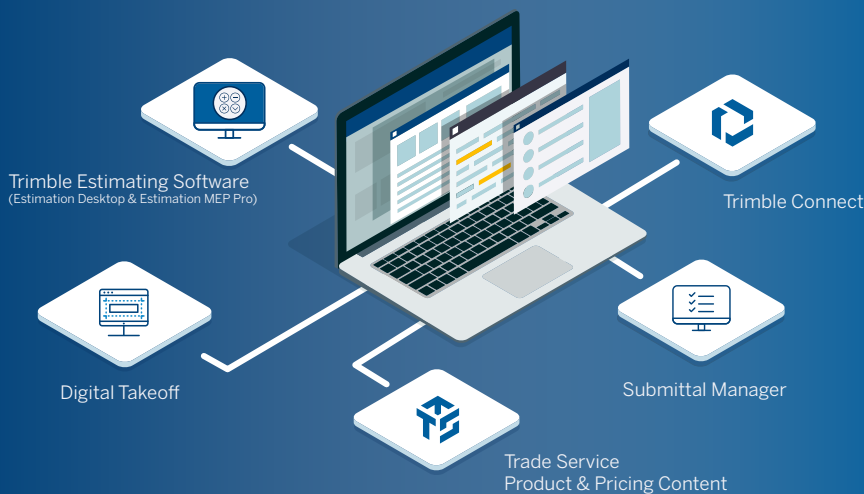
- ▶ Trimble® Estimation® Desktop Combo (Electrical, Mechanical and HVAC products)
- ▶ Advanced Image Manager
- ▶ Digital Takeoff
- ▶ Trade Service® Product & Pricing Content
- ▶ Supplier Xchange™
- ▶ Submittal Manager
- ▶ Trimble®Connect® Business Premium
- ▶ *Trimble Estimation MEP Pro (preview)*

One subscription with the essential tools you need to create estimates faster and more accurately while improving workflows across your pre-construction process.

Benefits

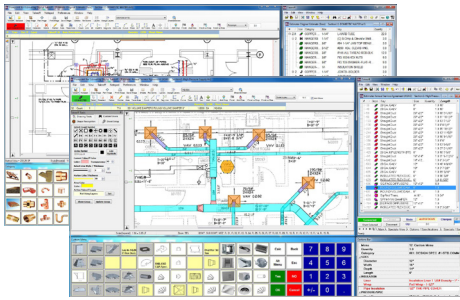
- ▶ One affordable subscription to meet your needs from estimating through bid submittal.
- ▶ Increase efficiency and consistency by equipping your whole estimating team with the same powerful tools, facilitating easier collaboration and training as well as simpler license management.
- ▶ Produce detailed estimates up to ten times faster than manual methods with consistent, streamlined processes that enable greater efficiencies across estimating teams.
- ▶ Connected estimating and digital takeoff increases efficiency and reduces risk of data entry errors compared to entering quantities manually.
- ▶ Boost accuracy with job-specific assemblies, customizable labor hours and real-time, up-to-date material pricing.
- ▶ Streamline workflows, reduce double entry of data and improve project handoff by leveraging integration with ViewPoint solutions and other third-party applications.
- ▶ Improve information sharing with your teams and other stakeholders for greater efficiency and informed decision making.

Estimation Desktop Estimating Essentials



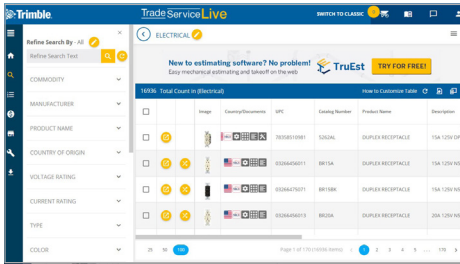
Estimation Desktop Essentials

Essential Tools for Mechanical, Electrical & HVAC Estimators in One Cost-Effective Subscription



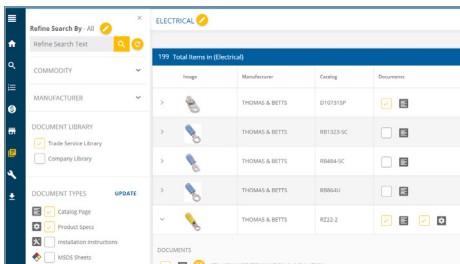
TRIMBLE ESTIMATION DESKTOP COMBO

Trimble® Estimation Desktop is easy-to-use estimating software tailored to the needs of Electrical, Mechanical, Plumbing and HVAC contractors. Estimation Desktop automates the estimating process, lowers costs associated with bidding, and, most importantly, helps you win jobs and maximize profits. Estimation Desktop features direct connectivity with Digital Takeoff for faster, more accurate takeoff. It also integrates with ViewPoint solutions and includes Trimble's Advanced Image Manager tool for modifying and organizing drawings and other files for import or use by other applications, further supporting your project workflows.



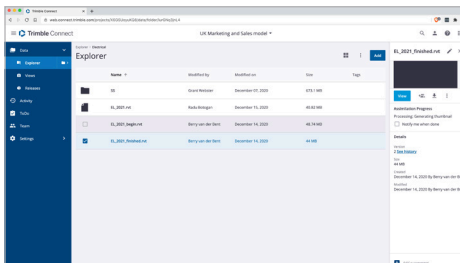
TRADE SERVICE PRODUCT & PRICING CONTENT

With TRA-SER® product and pricing software, you can easily import up-to-date pricing and product data directly into Estimation Desktop, increasing accuracy and saving time on database maintenance. Using Supplier Xchange™, which comes with TRA-SER, you can electronically submit a list of items and obtain company-specific quotes from multiple suppliers in real time, saving rework, reducing errors and speeding up the bid process.



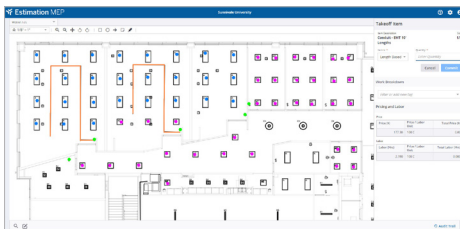
SUBMITTAL MANAGER

Submittal Manager can trim 50% -75% off the time it takes to create a submittal package. Simply upload the bill of material from your estimate and it's matched against our database of more than a million up-to-date catalog pages, installation instructions, specification and MSDS sheets. Within seconds, you will have the most current catalog pages ready to add to your estimate and customize using simple design tools for a professional bid submittal package.



TRIMBLE CONNECT

Trimble® Connect® is an open collaboration tool that connects the right people to the right data at the right time on any device - enabling informed decision making and enhancing project efficiency. Trimble Connect facilitates the sharing of detailed data such as estimates, drawings, models and more, to help connect workflows and simplify collaboration and coordination among stakeholders.



TRIMBLE ESTIMATION MEP PRO (PREVIEW)

Your Estimating Essentials subscription includes exclusive, early access to Trimble's newest web-based estimating solution. Not yet generally available, Trimble Estimation MEP Pro represents the future of estimating software, offering fully integrated graphical takeoff, material pricing and labor, and a continuously expanding set of features - features you can help define. This is your opportunity to preview and try Estimation MEP Pro, provide us with your feedback and be a part of the evolution of Trimble's next-generation estimating solution.

NORTH AMERICA
 Trimble Inc
 10368 Westmoor Drive
 Westminster CO 80021
 USA

Trimble Inc
 9131 Keele St.
 Vaughan, ONT,
 Canada
 866-799-6673 Phone