



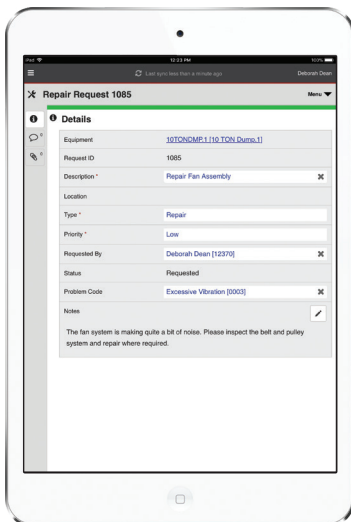
B2W Maintain

EQUIPMENT MAINTENANCE & REPAIR



KEEP CONSTRUCTION EQUIPMENT ON THE JOB AND CUT COSTS

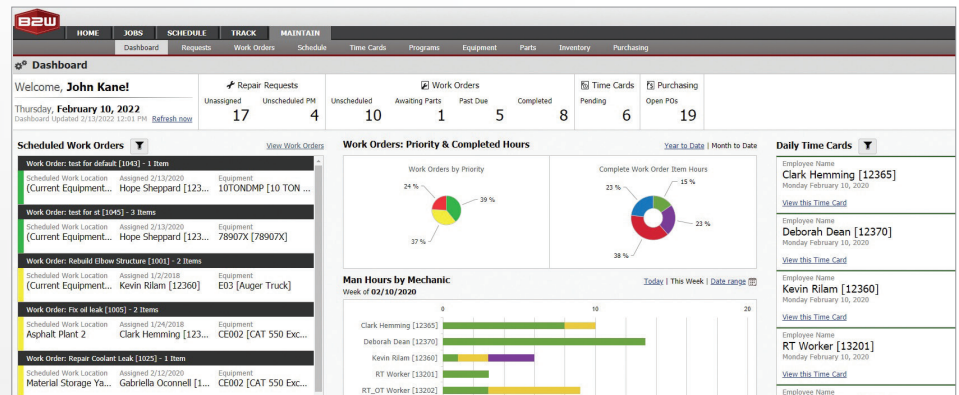
- Streamlined repair request and work order processing
- User-defined preventive maintenance plans
- Enterprise-wide visibility of equipment status, location and repair history in real time
- Unified with B2W field tracking and scheduling applications for repair request, status and dispatching
- Parts inventory control and purchasing integration
- Automated repair request generation via B2W Inform and other forms management tools



Keeping assets on the job and minimizing cost of ownership are critical to profitability and command a substantial chunk of every operating budget. B2W Maintain is a Computerized Maintenance Management System (CMMS) that connects shop, field and management teams and helps them maximize equipment utilization and cut maintenance costs. The software manages all aspects of the maintenance process, drives preventive programs and provides enterprise-wide access to equipment status and history in real time.

Maintain Dashboard

The Maintain Dashboard provides managers and executives with an easy-to-read snapshot of maintenance activities and metrics – and the option to drill down for details.



Work order creation and scheduling

Plan the work that needs to occur on a piece of equipment for maximum efficiency and minimum downtime by grouping multiple repair items together and assigning appropriate codes, parts, and estimated hours before approving the work to be completed by a mechanic. Users can drag and drop work orders on the schedule, click for details and create or assign work orders on one screen. Schedule and telematics data, combined with a view of equipment locations and associated work, allow managers to optimize the efficiency of mechanics on the job.



ADDITIONAL FEATURES

- Equipment portal for field users
- Automated warranty tracking
- Parts inventory control
- Integration of parts purchasing
- Agnostic telematics integration

Mechanic	Thu, 02/13	Fri, 02/14	Sat, 02/15	Sun, 02/16	Mon, 02/17	Tue, 02/18	Wed, 02/19
Algal Mitchell (1314)							
Adrian Guigard (1318)	VM8128 BODY WORK... 1000 [Cable Superfine Travel] 1 Items 0 HR		Perform DOT Inspection [1015] 1000 [Cable Superfine Travel] 1 Items 0 HR				
Amelia Romero (13020)							
Bella Mattson (13066)			VM8128 Repair Ch... 1000 [Cable Superfine Travel] 1 Items 0 HR			(Indiv.) Diagnose / L... 1004 [Cat 9530 Loo...] 1 Items 0 HR	
Brian Witz (13164)	Perform DOT Inspect... 1000 [Cable Superfine Travel] 1 Items 0 HR			PREP AND PAINT [1... 1000 [Cat 9530 Loo...] 1 Items 0 HR	Repair Lights, Deck, Perform DOT Inspection [1012] 1000 [Cat 9530 Loo...] 1 Items 0 HR		
Caroline Chan (13086)							
Carson Vazquez (13176)	Refurbish Elbow Structure [1001] 1000 [Cable Superfine Travel] 1 Items 0 HR						
Chloe Elrod (13098)	Fix oil leak [1005] 1000 [Cable Superfine Travel] 1 Items 0 HR		Repair Engine Loss... 1000 [Cable Superfine Travel] 1 Items 0 HR			(Indiv.) Replace wal... 1000 [Cable Superfine Travel] 1 Items 0 HR	

Flexible views and repair request

Choose to view the schedule of maintenance activities for one day or multiple days and toggle easily between mechanic-centric and equipment-centric views. Whether repair requests are submitted from the field using B2W Track or electronic forms, created directly from B2W Maintain, or created in the Work Orders tab, all required work is managed in a central location.

User-defined preventive maintenance plans

Managers can set up recurring maintenance to occur per piece of equipment based on custom defined meter- or calendar-based triggers. They can also apply preventive maintenance templates based on company-specific or manufacturer-recommended maintenance schedules for multiple pieces of equipment.

Enterprise-wide visibility

B2W Maintain gives employees across workflows and departments – with appropriate permission – a single location for a real-time view of:

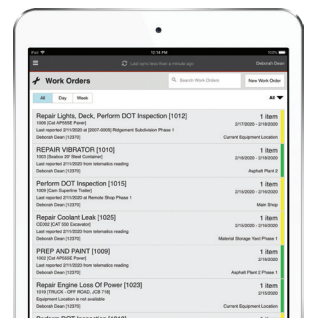
- Work Order and Timecard status
- Repair Requests from the field
- Unassigned work needing attention
- Upcoming preventive maintenance due
- Equipment status location and repair history

Mobile tablet mechanic application

This app makes it easy and efficient to communicate rich data in real time and to create and fulfill repair requests and work orders in the shop or in the field. Mechanics can also access documentation and submit timecards.

Unified with the B2W platform

Receiving repair requests directly from the field via B2W Track, providing equipment status to B2W Schedule automatically, a single mobile app, and real-time communication and visibility across workflows are among the benefits of a unified operations platform. Contractors can also configure B2W Inform equipment inspection templates to automatically communicate defects and generate repair requests in B2W Maintain.



B2W Software empowers and inspires heavy civil construction companies to win more work and complete it more profitably. The company's unified platform connects resources, workflows and data and includes applications to manage estimating, scheduling, field tracking, equipment maintenance, data capture and business intelligence.

