

Trimble Estimation Desktop

Complete MEP Estimating Software

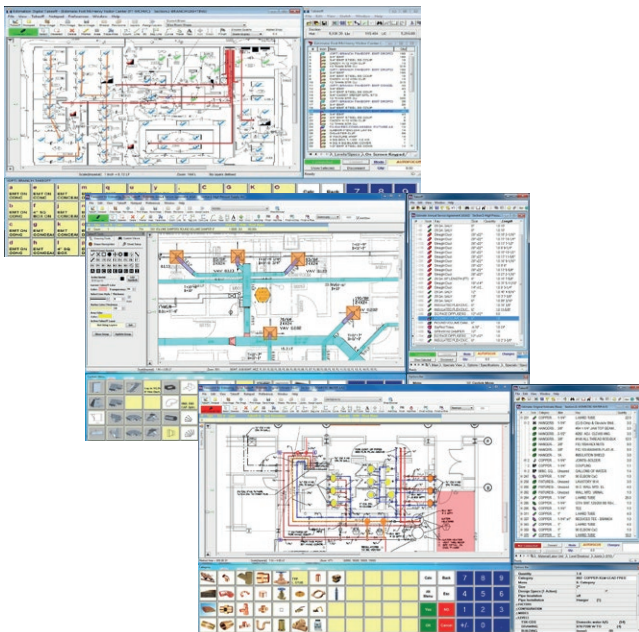
Profit, or lack thereof, starts in the pre-construction phase of a project. Construction firms can save significant time and produce better estimates by using Trimble® Estimation software. Work with increased speed and accuracy throughout your bidding process, save time on paperwork, and achieve greater overall efficiency and cost savings.

This seamless takeoff and estimating software allows you to instantly access the information you need, easily share data among various applications, and improve communication and workflow. The result is maximum efficiency with minimal data entry and increased accuracy.

Estimating Essentials is a powerful estimating solution in a simple, cost-effective package to help you build better, more accurate estimates and get to bid day faster.

Works the way you work

Trimble Estimation is tailored to the needs of electrical, mechanical, plumbing, or HVAC contractors. Developed with capabilities designed specifically for your trade, Trimble Estimation allows you to automate the estimating process, lower costs associated with bidding, and, most importantly, win jobs to maximize your profit.



Estimation Desktop is available in the Estimation Desktop Essentials subscription.

Comprehensive and easy to use

By tying together estimates, labor needs, and cost analysis, Trimble Estimation allows you to quickly and easily produce professional estimates and reports and perform detailed analysis.

Streamlined takeoff gives a new level of control and productivity. The software performs calculations and extensions automatically ensuring fewer mistakes and saving you crucial estimating time.

Trimble Estimation also includes multi-level breakouts, comprehensive databases, and reporting functions so you can estimate with confidence.

Everything in one place

Ensure you put the best possible pricing into your bid with integrated pricing tools. Trimble Estimation is fully integrated with TRA-SER® and includes the Pricer module for on-the-fly access to pricing from your preferred suppliers.

With direct connectivity to the digital takeoff, there's no need to import or export between the estimate and digital takeoff saving you extra steps and time. Download your plans to your computer from any online plan room, scan in your plans, or upload them from a storage source; there's no need for a digitizer board, stylus pen, or even a set of paper plans. Once your plans are loaded, you can measure and/or count simply by using your mouse.

Benefits

- Software that works the way you work because it's tailored to your trade
- Greatly reduced time and cost associated with takeoffs and estimates
- Stay focused and efficient by managing everything related to your estimates in one place
- Create more professional looking estimates to get you noticed
- Fewer mistakes and errors in your estimates that could cost you the project or reduce your profit
- Gather pricing while working directly from your estimate

Trimble Estimation Desktop

Complete MEP Estimating Software

Tailored to your trade

Trimble Estimation is available for electrical, mechanical, HVAC, or plumbing contractors. No matter which trade you're in, you'll have access to the same easy-to-use interface.

Electrical

- Quick assembly tools designed especially for lighting fixtures, receptacles, switches, etc. help estimators perform more detailed takeoffs, such as branch wiring, feeder runs, panels, raceways, etc.
- The dynamic assemblies can be used to easily customize takeoffs to the way you would build it out.
- Copy and save these job-specific assemblies to access and reuse for other areas of the job.

HVAC

- By simply selecting a specification or pressure class, you are able to measure out a duct run and have everything automatically selected for you. This includes the material type, gauges, joints, seams, style, hangers, vanes, wrap, and liner.
- If fabricating your duct or pipe, all the weight, square footage, material cost, and labor is processed to your shop configurations (coil line, plasma cutters, etc.).
- Dynamic assemblies can be used to easily customize takeoffs to the way you would build it out.
- Copy and save these job-specific assemblies to access and reuse for other areas of the job.

Mechanical

- Specification-driven takeoff allows you to takeoff generic pipe and fittings and have the design spec automatically select the appropriate material type, manufacturer, etc. and apply it to the estimate.
- The dynamic assemblies can be used to easily customize takeoffs to the way you would build it out.
- Copy and save these job-specific assemblies to access and reuse for other areas of the job.

Plumbing

- Material-driven takeoff makes it quick and easy to select size and type of material to apply a measured, counted, or calculated quantity/length.
- The dynamic assemblies can be used to easily customize takeoffs to the way you would build it out.
- Copy and save these job-specific assemblies to access and reuse for other areas of the job.

Available as cloud-hosted solution

- Optionally available as a cloud-hosted solution.
- Access Trimble Estimation whenever you need it and wherever you are – all you need is an Internet connection.
- No need to worry about infrastructure and investments in hardware.
- We'll take care of the upgrades, maintenance, and backups—all you have to focus on is how to profitably execute quality projects.

Viewpoint Connectivity

- Connectivity with Viewpoint solutions including Vista and Spectrum.
- With true Spectrum connectivity, select your Estimation Desktop project directly in the Spectrum project list and send the estimate data to the project's job costing and schedule of values—all without the need to import/export the file

System requirements

- PROCESSOR: 2 GB dual core chip
- RAM: 4 GB
- STORAGE: 8 GB
- OPERATING SYSTEM: Windows® 10 and 11 Pro or Enterprise editions

Certifications

- ISO 27001:2013
import/export the file

