

Trimble AutoBid Mechanical

YOUR COMPLETE MECHANICAL ESTIMATING SOFTWARE

Trimble® AutoBid® Mechanical is the market leading estimating software for commercial and industrial mechanical, piping, and plumbing contractors. Providing contractors with customized graphical takeoff tools, automatic fitting generation, value engineering, a database of over 100,000 items, and multiple industry standard labor books, Trimble AutoBid helps contractors to quickly and accurately create bids.

ONSCREEN VIEW TAKEOFF

Import electronic drawings directly into AutoBid Mechanical so you can display your drawings on screen to perform takeoff while creating an audit trail of connected items.

Benefit from more consistent processes and save time during takeoff with pre-built assemblies that you can access with just the click of a button. Trimble AutoBid comes configured with a wide range of plumbing fixture assemblies, mechanical hookup assemblies, equipment and pumps, which are provided out of the box, or you can create your own library of assemblies customized to your company.

You can also easily select a group of items from the drawing to create an assembly on the fly to be used on a project. Areas of the on screen drawing can also be boxed in and copied and pasted to repeat takeoff items.

AUTOMATION IS SPEED

Specification-driven takeoffs speed up the takeoff process by applying specs that automatically determine the properties of that item. The associated specification provides the details, including the material type, schedule, connections, and allowances of the items being taken off.

Say goodbye to manual fittings with autofitting generation! Trimble AutoBid Mechanical greatly reduces takeoff time and improves accuracy with the most advanced autofitting generation

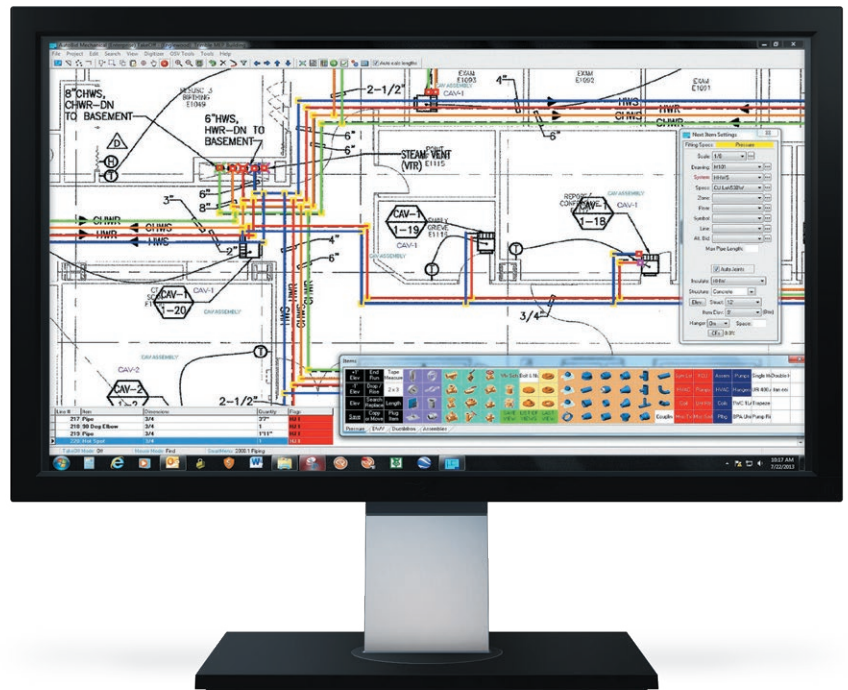
functionality in the industry. Using rulesets to make decisions along the way, the software automatically generates all fittings, including branch takeoffs, based on the relationship between points that are touched by a mouse along the route line in OnScreen View takeoff. All you have to do is draw your line to represent the pipe and it will automatically add and takeoff the fittings without any additional work, while ensuring hangers and attachments are accurately counted.

CREATE ESTIMATES WITH FLEXIBILITY

Change happens; with AutoBid Mechanical, it is easy to determine changes between drawings and make changes to your estimate. AutoBid Mechanical can highlight the differences between the bid set of drawings and the addendum drawings. By seeing the changes in red on the overlaid drawings, estimators can quickly and easily determine the changes without the tedious task of manually comparing and identifying changes.

Key Features

- ▶ **Autofitting Generation** automatically inserts and counts the correct fittings and hangers, reducing takeoff time
- ▶ **Value Engineering** compares different installations costs by changing specifications to analyze the savings
- ▶ **Pre-built Database** of over 100,000 items
- ▶ **Pre-built Assemblies** you can access with just the click of a button
- ▶ **Create custom exports** of material cost, labor hours, and cost by different categories
- ▶ **Live link to pricing services** for up-to-date pricing
- ▶ **Industry standard labor units**, including MCAA and PHCC, built in the software
- ▶ **Rapid reports** allow contractors to summarize their data in a variety of configurations



Trimble AutoBid Mechanical

VALUE ENGINEERING

Additionally, AutoBid provides the contractor with value engineering capabilities. Analyze potential material and time savings in Trimble AutoBid with the ability to quickly change and compare specifications, without repeating takeoff, giving you options you can provide to your potential client (i.e. Welded vs. Grooved or Cast Iron vs. PVC).

With intelligent graphical takeoff and OnScreen View takeoff, project managers can use the Box-In functionality to quickly select project areas to modify reports and generate detailed costs codes, schedules of values and purchase orders, without performing additional takeoff. This box-in feature is great for short interval planning as well.

ACCURATE MATERIAL AND LABOR

With a live link to the most popular pricing services, including TRA-SER, Allpriser, and Harrison, you'll ensure your database is maintained with the most current material pricing.

AutoBid also comes with pre-built industry standard labor units in the software. Members of MCAA or PHCC can access their library of labor units directly in the software, or non-members can utilize the Trimble standard labor units built into the software for no extra charge.

Material and Labor Summary						
There were 16 calculation messages. Recalculation is needed						
Project Name: Trimble Building 2019			Page 1 of 3			
Bid ID: Trimble2019			Report Time: 12/12/2019 12:18 PM			
Data Calculated: 12/5/2019 2:39:25 PM						
Base Bid: (Field toggle on)						
Material	Qty	Weight	Material Cost	Labor Hours	Labor Cost	Total Cost
Pipe						
Carbon Steel Black Std/DN Domestic	4,828	68,969	198,980	1,768	61,472	260,452
Cast Iron Soil, No/Hub	2,634	13,779	45,170	412	13,906	61,076
Cast Iron Soil, SV, Hub & Spigot	139	1,281	4,308	55	1,382	5,690
Copper DWV	22	17	213	2	65	279
Copper Type L	14,355	10,348	108,720	1,034	36,439	145,159
PVC DWV	271	312	183	19	754	1,616
Sub Totals:	22,520	92,776	358,255	3,249	118,018	476,273
Nipples						
Carbon Steel Threaded, Black Std	510	143	1,096	26	937	2,033
Sub Totals:	510	143	1,096	26	937	2,033
Fittings						
Carbon Steel Branch Outlets 3000w	96	54	1,435	183	6,556	7,991
Carbon Steel Branch Outlets Std W/weight	31	124	2,320	191	6,852	9,172
Carbon Steel Sum/Weld Std/DN Domestic	162	6,837	44,307	2,162	77,602	121,799
Carbon Steel Sum/Weld XH Domestic	12	84	762	65	2,338	3,100
Cast Iron Soil, No/Hub	1,447	2,698	36,006	283	10,978	46,984
Cast Iron Soil, SV, Hub & Spigot	35	201	1,611	12	471	2,082
Copper DWV	29	3	263	12	452	1,016
Copper Pressure	4,736	805	104,919	2,325	84,468	189,387
Valuable Iron Grooved, Painted	126	61	7,068	45	1,604	8,672
PVC Hub x Hub Flange DWV	36	41	930	11	436	1,366
Sub Totals:	6,910	10,597	199,722	5,319	191,967	391,689
Flanges						
Carbon Steel Raised Face, 150 W/Std	2	33	111	7	254	366
Sub Totals:	2	33	111	7	254	366
Valves						
Bronze Soldered Ball	765	610	34,659	393	14,112	48,771
Bronze Soldered Y-Strainer	255	0	19,802	140	5,043	24,845
Bronze Threaded 2-Way Control	255	0	0	319	11,456	11,456
Ductile Iron Lug Butterfly, Lever Operated	1	15	410	2	74	484
Sub Totals:	1,276	625	54,871	855	30,685	85,556
Hanger Components						
Clevis	1,906	2,709	38,065	0	0	38,065
Pipe Brackets	16	0	0	0	0	0
Riser Clamps	24	100	1,393	8	280	1,673
Rods	12,314	4,838	15,902	0	0	15,902

BID CLOSEOUT AND INTEGRATION

View your estimate by breakdowns and more than 10 categories in Rapid Reports. These reports can be customized to the way you work. Then easily export the data via Excel® to third party project management and accounting systems or to develop your own final estimate spreadsheet.

SYSTEM REQUIREMENTS

WORKSTATION	
Processor ¹	i3 Intel compatible processor
RAM	4 GB RAM or higher
Storage	20 GB free disk space
Operating system	Windows® 10 Professional or higher
Monitor ²	Dual 23-inch Monitors; 1680 x 1050 resolution

1. AutoBid runs on 64 bit systems, but does not provide native 64-bit support
2. 4K Monitor supported