

# Estimation MEP

Your all-in-one estimating solution in the cloud:  
Estimating - Takeoff - Pricing - Labor - Collaboration



Complete estimates faster and with more confidence — straight from your web browser.



# Stop guesstimating, start estimating!

**Just what you need to efficiently build an accurate estimate, Trimble® Estimation® MEP software helps small to midsize MEP contractors win more work profitably and predictably. This easy-to-use estimating software combines document storage, graphical takeoff, material pricing and labor, and distributor pricing in one, fully-integrated solution, so you can complete your estimates faster and with more confidence — straight from your web browser. Plus, collaboration and connected workflow capabilities offer added value and streamline processes for greater return on your investment.**

“**Exactly the estimating software we needed.**”

“Estimation MEP is exactly the estimating software we needed to get our takeoffs done quickly and accurately without having to make a lot of changes in the program.”

- Steve Richardson, Estimator, Maccarone Plumbing, Inc.

Error-free estimating has never been faster or easier!

## **Simplify for more success**

Say goodbye to Excel and switching between multiple, standalone applications. Intuitive workflows, faster takeoff – featuring Auto Count with patented secondary search functionality – and material pricing and labor are available all in one application for faster, more accurate estimates and more bids out the door.

## **Build estimates, not your database**

Built on Trimble's industry-leading content, Estimation MEP delivers a fully-managed item library with material pricing and labor, plus thousands of out-of-the-box assemblies – so you don't have to.

## **Bid with confidence**

Fully linked graphical takeoff, up-to-date pricing on hundreds of thousands of items – and more – reduce the chances of costly errors to help increase accuracy.

## **Make handoffs a breeze**

The Trimble® Connect® collaboration platform lets you store and share project data for easier coordination. Plus, connected workflows help you use estimate data beyond the initial bid to improve productivity and profitability.

## **Work the way you want**

Whether on a PC or a Mac, at the office or on the go, Estimation MEP fits your work style. Plus, shared access makes it easy to work together with teammates on an estimate, all from a web browser, whenever and wherever.

## **Work securely**

Estimation MEP is ISO 27001 certified so you know your data is secure without additional IT resources or needing to install updates.





# Leverage connected workflows to streamline your business

## Model-based estimating

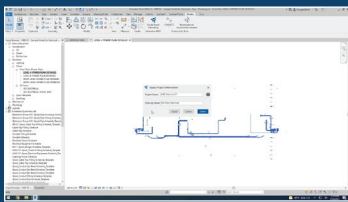
The model-based estimating workflow seamlessly connects your BIM model to the estimate with just a click of a button. Powered by a direct connection between Trimble® SysQue® detailing software and Estimation MEP, this workflow enables you to automatically create an estimate straight from your model and provides greater project insight and visibility, improved collaboration and more accurate project execution.

## Direct supplier pricing and procurement

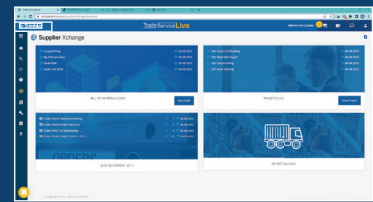
Fully integrated with Estimation MEP, Supplier Xchange provides up-to-date material pricing directly from your suppliers - in real time. Simply apply those prices to your estimates to ensure you have the best, most accurate pricing for bid submittals. To save even more of your precious time and further reduce the chance for data entry errors, once you've won the bid, you can purchase materials directly from that same bill of materials using the Supplier Xchange procurement workflow.

## Project coordination

Included with your subscription and integrated with Estimation MEP, Trimble Connect is an open collaboration tool that connects the right people to the right data at the right time on any device - enabling informed decision making and enhancing project efficiency. Projects created in Estimation MEP are immediately available in Trimble Connect, enabling sharing of detailed data, and simplifying coordination among stakeholders for better project outcomes.



Item	Description	Quantity	Unit	Price	Total
1	1/2" SCH 40 STEEL PIPE	100	FT	1.50	150.00
2	1/2" SCH 40 STEEL PIPE	50	FT	1.50	75.00
3	1/2" SCH 40 STEEL PIPE	25	FT	1.50	37.50
4	1/2" SCH 40 STEEL PIPE	12.5	FT	1.50	18.75
5	1/2" SCH 40 STEEL PIPE	6.25	FT	1.50	9.375



## Get up to speed fast

Designed specifically for the workflows of MEP contractors, Estimation MEP emulates the familiar takeoff sheet forms estimators have traditionally used. This eliminates the need for hours of software training and minimizes the learning curve so you can start estimating in no time – even if you've never used estimating software. Plus, guides and resources are available directly in the application, so you can quickly get the information you need to keep your workflow moving without interruption.



The model-based estimating workflow has been a game-changer for us. It's more accurate, which is a big key...we jumped from a 10% to **25% win rate**, while estimating twice as fast as before."

- Dyllon Briggs, Blue Mountain Mechanical

# Key estimating details

## Managed item library and assemblies

The only MEP estimating software complete with a catalog of hundreds of thousands of items – most with list prices from the industry's leading source, Trade Service – plus thousands of out-of-the box assemblies.

## Custom items and assemblies

Create and edit items and assemblies when you need them. Customize items and assemblies within an estimate or easily build out your own assembly database using the integrated assembly builder.

## Labor and labor factoring

Create a detailed labor estimate by leveraging the included Trimble industry standard set of labor units. Factor your labor hours by drawing and by work breakdown structure to meet your company's unique needs.

## Seamless, integral graphical takeoff

Eliminate paper, speed up takeoff and eliminate data entry errors. Graphical takeoff works seamlessly with estimating – all in one application – so your estimate is always up to date.

## Summary

Estimation MEP automatically consolidates the items from multiple takeoff sheets and allows you to make any additional changes to material pricing or labor hours in this summarized view.

## Quote management

Estimation MEP compiles quotes from vendors and subcontractors as they come in to help you make the best decisions so you can gain a competitive advantage and reduce the chaos of bid day.

## Bill of material (BOM)

See and export your entire list of material in your estimate in one view and group the data by work breakdown, manufacturer or floor for procurement, scheduling and project management purposes.

## Bid closeout

Manage labor and crew rates and add cost items like rental equipment, general expenses and subcontractors to your estimate. Add tax, overhead and markup to calculate your final number as accurately as possible.

Takoff with audit trail

Estimate summary

## System Requirements

A laptop or desktop — Mac or PC

### Web browser

Google Chrome required

### Display

1024x768 resolution or higher  
4K monitors supported  
A second monitor, although not required, makes the experience even better and more efficient

### Connectivity

Requires a reliable broadband internet connection (10 Mbps or faster)

### Certifications

ISO 27001:2013

### USA

Trimble Inc  
10368 Westmoor Drive  
Westminster CO  
80021  
USA

© 2023, Trimble Inc. All rights reserved. Trimble, the Triangle & Globe logo are trademarks of Trimble Inc., registered in the United States and other countries. All other trademarks are the property of their respective owners. (04/23)

