



BUS LIGHTS

200 Series Bus Flashers

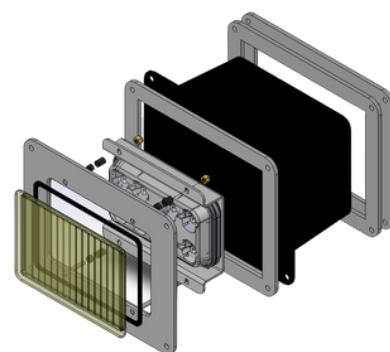
Surface, Window & Flush Mount








The 200 Series is the next generation of bus signal lighting. Featuring enhanced styling and hugely improved performance. Featuring three mounting options - Surface mount, Flush mount and Window mount the 200 series is designed to be fitted into new and existing builds. The Flush and Window mounts even follow the existing bolt-hole patterns from legacy 830-1XX series Hazard bus flashers for easy retrofitting.

All models feature a steady burn mode for backwards compatibility with legacy flasher controllers while outperforming all photometric and surface area standards for bus flashers.

Indicated models include a 70mm black plate for selected state requirements (such as TS150)



Models:

PART NO.	COLOUR	VOLTAGE	AMPS	MOUNT	PLATE
830-200A		12-24	1.2	SURFACE	-
830-201A		12-24	1.2	SURFACE	70mm Black
830-210A		12-24	1.2	FLUSH	-
830-211A		12-24	1.2	FLUSH	70mm Black
830-212A		12-24	1.2	WINDOW	-

200 Series Bus Flashers

Surface, Window & Flush Mount

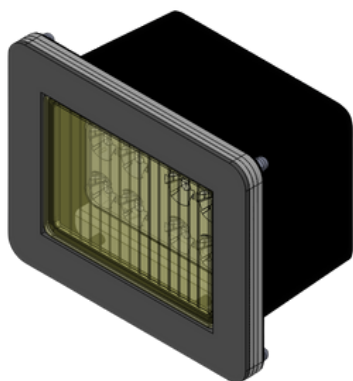
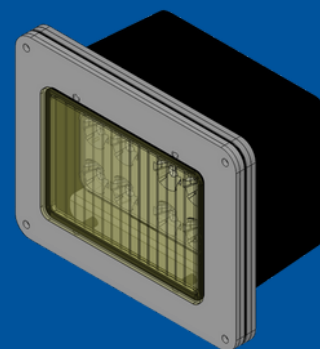


Surface:

Surface mount 830-200A and 830-201A models are designed with functionality in mind. Featuring a built-in wig-wag as well as steady-burn flash patterns, these surface mount models are built for new and existing builds. Furthermore, the 830-201A includes a 70mm black border to comply with local state requirements.

Flush:

Flush mount 830-210A and 830-211A models are designed for ultra-thin installation. Designed for integration into new and existing builds with the combined use of a flasher unit. The 830-211A includes a 70mm black border to comply with local state requirements. Additionally the 830-210A and 830-211A bolt-holes pair perfectly with legacy Hazard bus lights, making for an easy retrofit into existing builds.



Window:

Window mount 830-212A is designed for installation to the internal glass window. The 830-212A is perfect for integration into new and existing builds with the combined use of a flasher unit.



200 Series Bus Flashers

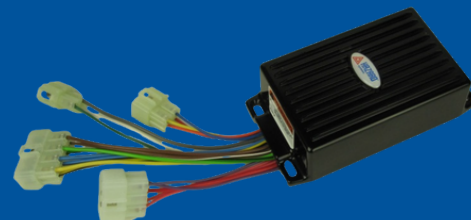
Surface, Window & Flush Mount

Accessories:

Alternating Flasher (single pattern)

School Bus Flasher Solid State (NSW)

PART NO.	VOLTAGE	BOLT	WARRANTY
886-012	12	4	1 Year
886-013	24	4	1 Year



- Automatic on when a door is open
- 20-second shut-off timer when doors close
- Includes failure detection and manual mode

Headlight Flasher with Auxiliary

School Bus Flasher Solid State (All States except NSW & TAS)

PART NO.	VOLTAGE	LIGHTS	WARRANTY
882-001	12-24	4	1 Year



- Automatic on when a door is open
- 20-second shut-off timer when doors close
- Harness to suit 882-902



200 Series Bus Flashers

Surface, Window & Flush Mount

Luminous Intensity Chart:

Luminous Intensity of Warning Lights. 830-21X LED School Bus Light.

		Horizontal									
		-30°	-20°	-10°	-5°	0°	5°	10°	20°	30°	
Vertical	10°	50				80	50				
		904				1117	987				
	5°	180		320	350	450	350	320	180		
		1090		1576	1695	2079	1841	1541	1034		
	0	75	450	1000	1250	1500	1250	1000	450	75	
		1054	1212	1885	2016	2455	2186	1834	1205	1078	
	-5°	40	270	450	570	600	570	450	270	40	
		782	912	1311	1442	1786	1568	1331	900	841	
	-10°	75				75	75				
		682				848	753				

Top number = requirement

Bottom number = measured (bold)