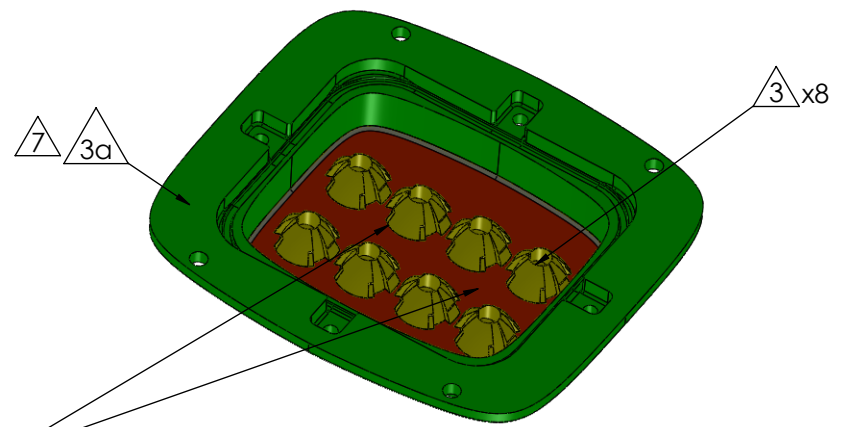
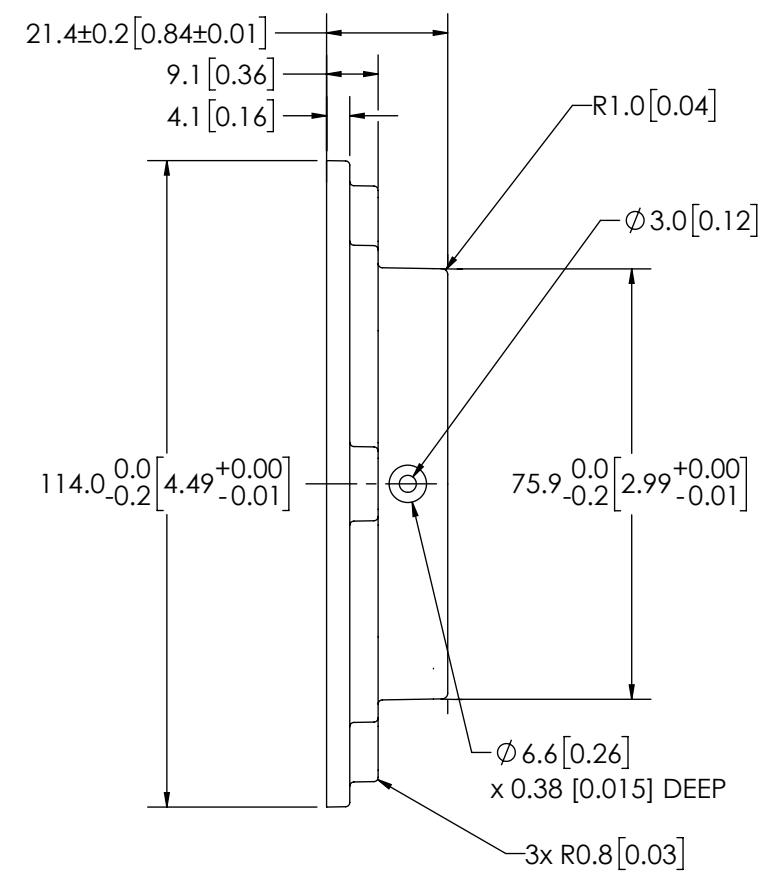
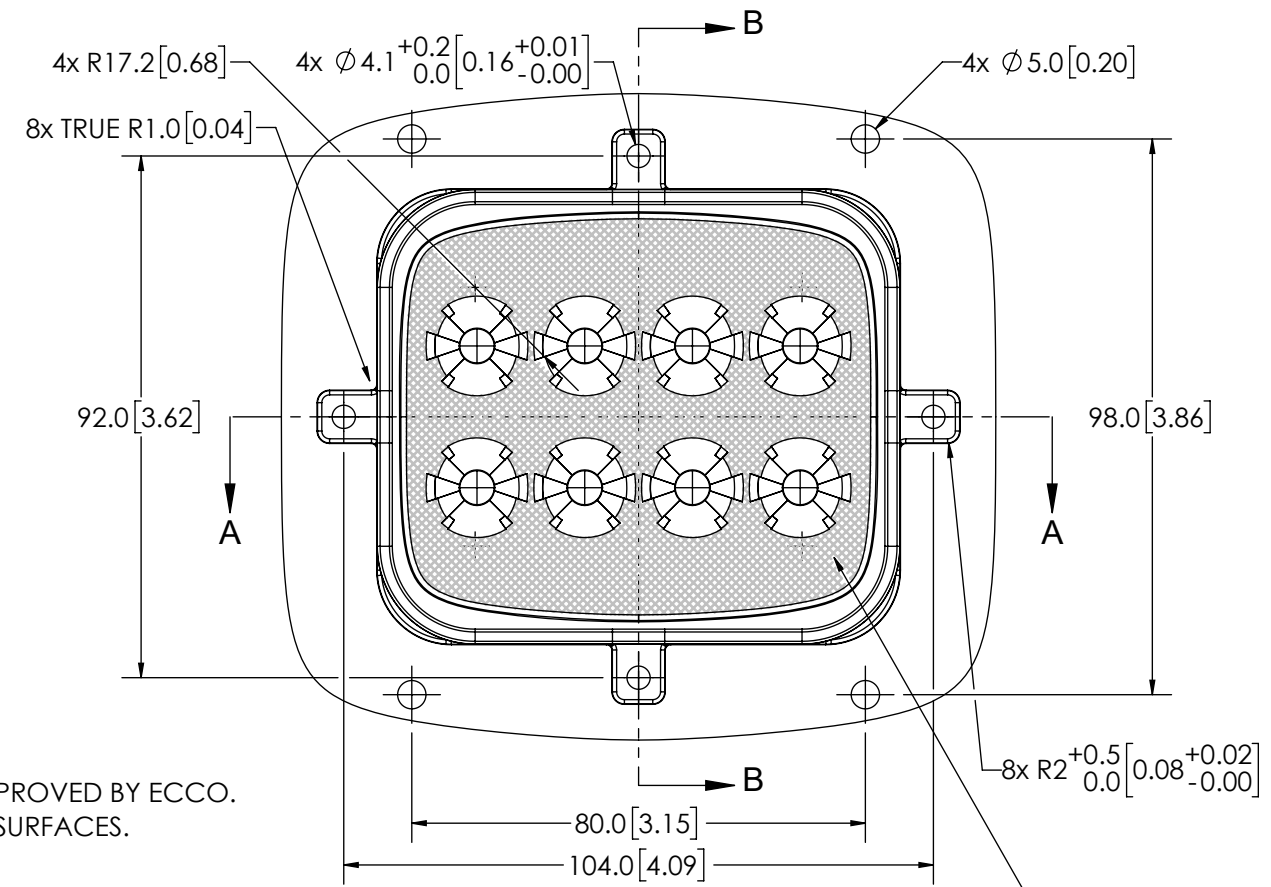
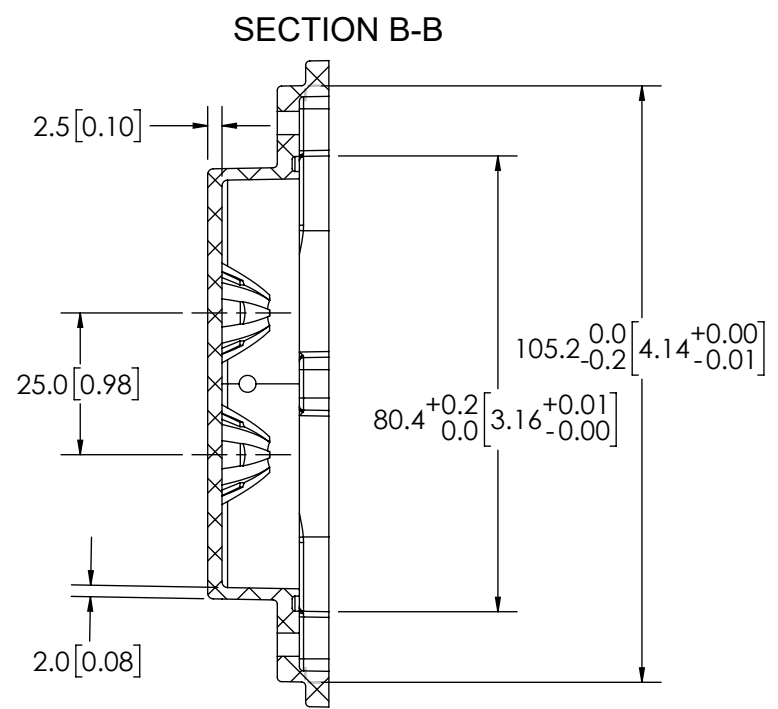
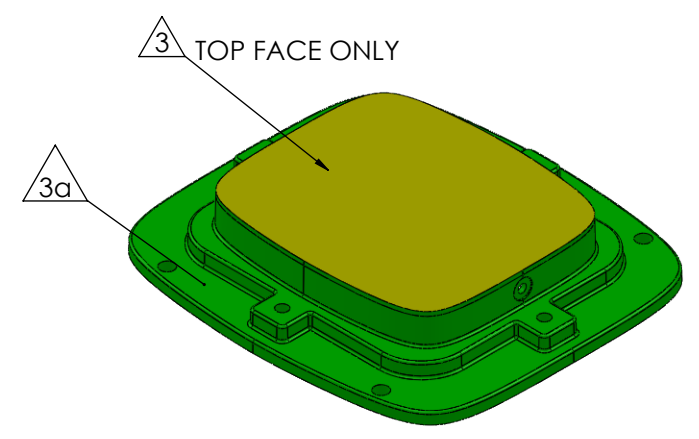
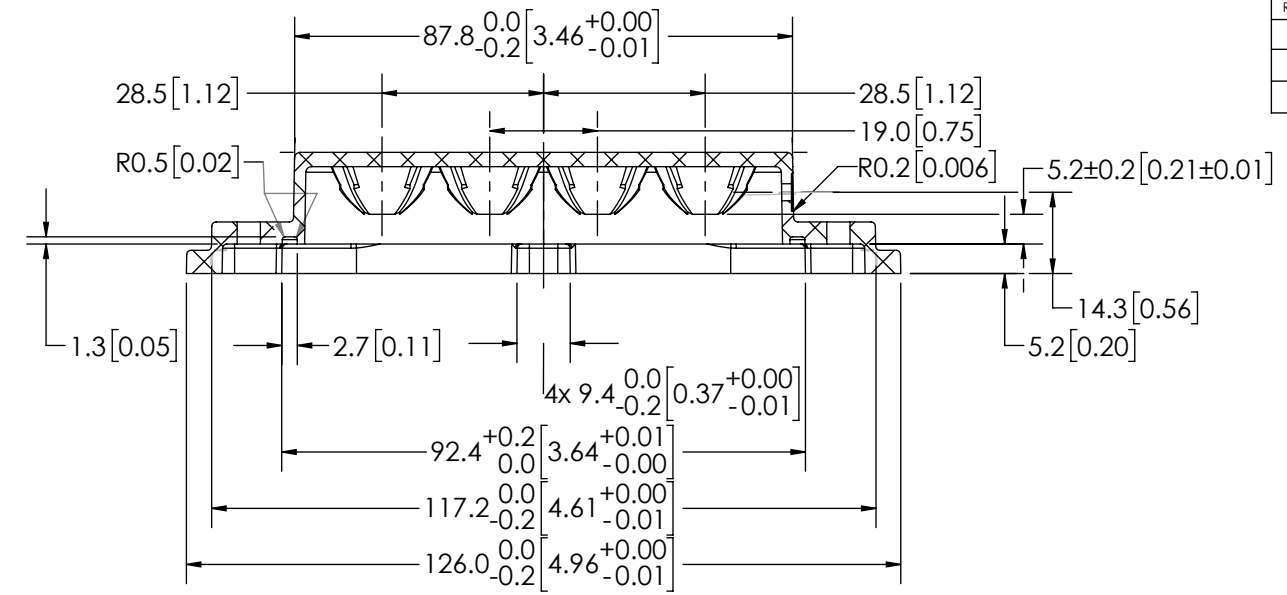


REVISION HISTORY		
REV.	DESCRIPTION	DATE
B	REVISE PER V14024	2018-01-17
C	REVISE PER V14024	2018-06-01
D	REVISED PER HP0044	2020-10-05



TOOL DESIGN TO ALLOW NO FILLETS IN OPTICAL AREAS.  
 OPTIC WALL INTERSECTIONS MUST BE SHARP.  
 NO EJECTION PIN MARKS, GATES, OR OTHER IRREGULARITIES ALLOWED ON OPTIC SURFACES.



- NOTES:
- GATE, PARTING LINE, AND EJECTION PIN LOCATIONS TO BE APPROVED BY ECCO.
  - REFER TO SOLID MODEL OF PART FOR DEFINITION OF OPTICAL SURFACES.
  - YELLOW: FINISH: SPI-A2 OR FINER ON OPTIC SURFACE
  - GREEN: ALL OTHER SURFACES SPI- B2 OR BETTER.
  - FILLETS AND RADII: 0.25mm UNLESS OTHERWISE STATED - INDICATED AREAS TO HAVE NO FILLETS OR RADII, SEE NOTES.
  - DRAFT: ALL DRAFTS 1°.
  - MATERIAL: REFER TO RD-0024-00. COLOUR: SEE CHART.
  - EJECTION PIN MARKS TO BE SUBFLUSH 0.13mm - 0.38mm
  - CONTACT ECCO DESIGN ENGINEERING DEPARTMENT FOR DXF OR IGES FILES
  - PARTING LINE FLASH NOT TO EXCEED 0.13mm AROUND THE ENTIRE PART
  - GATE TRIMMED HEIGHT NOT TO EXCEED 0.76mm.
  - NO VISIBLE SMOKE, SCUFFS, RIPPLES, OR CRACKS. NO HAIRLINE SCRATCHES OR FLOW/KNIT LINES. NO SINKS OR DISTORTIONS.
  - DIMENSIONS IN MILLIMETERS (INCHES FOR REFERENCE))

COLOUR CHART	
LENS P/N	COLOUR
250-0453-00	CLEAR
250-0453-02	AMBER

RED: HATCHED AREA TO HAVE MOLD-TECH FINISH M-1 1020 ON THIS SIDE ONLY

NON DISCLOSURE AGREEMENT  
 THIS DRAWING AND THE DESIGN IT DISCLOSES ARE THE PRIVATE PROPERTY OF ELECTRONIC CONTROLS CO. AND IS ISSUED IN CONFIDENCE FOR ENGINEERING INFORMATION ONLY. THE DRAWING AND / OR DESIGN MAY NOT BE USED, COPIED, REPRODUCED, OR OTHERWISE DISCLOSED IN PART OR AS A WHOLE TO OUTSIDERS OR USED FOR ANY OTHER PURPOSE WITHOUT THE PRIOR WRITTEN CONSENT OF ELECTRONIC CONTROLS CO. THE DRAWING IS SUBJECT TO RECALL AT ANY TIME. YOUR POSSESSION OF THIS DOCUMENT CONSTITUTES ACCEPTANCE OF THESE TERMS. © 2017 ELECTRONIC CONTROLS CO.

SCALE 3:4		APPROVALS	DATE
CAD GENERATED DRAWING FROM SOLID MODEL: REV. C+ DO NOT MANUALLY UPDATE.		DRAWN BY: MDG	2020-08-26
TOLERANCES ARE IN INCHES, AND MILLIMETERS UNLESS OTHERWISE STATED ARE:		CHECKED: LSH	2020-10-05
MILLIMETERS (DECIMALS)		MECH. ENG.	
INCHES (DECIMALS)		ELEC. ENG.	
FRACTIONS		MFG. ENG.	
THIRD ANGLE PROJECTION		TEST ENG.	
Electronically Controlled Use Latest Copy			

**ESG**  
 ECCO SAFETY GROUP

United States  
 1-800-635-5900  
 Americas@eccogroup.com

United Kingdom  
 +44 (0)113 237 5340  
 Europe@eccogroup.com

Australia  
 +61 (0)3 63324444  
 AsiaPacific@eccogroup.com

**LENS, SECURIED, POLYCARBONATE, CLEAR**

SIZE: A3 DWG. NO. 250-0453-00 REV. D

SHEET 1 OF 1 Project: V14024 Date Created: 2017-04-07