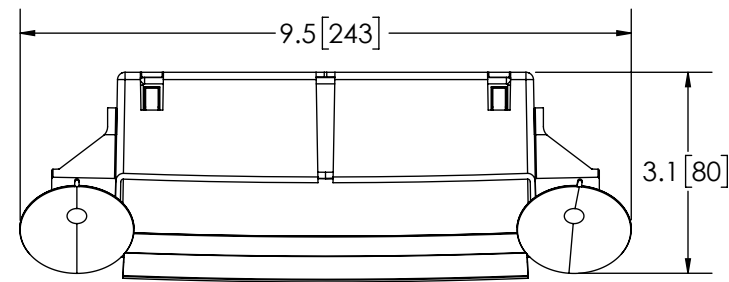
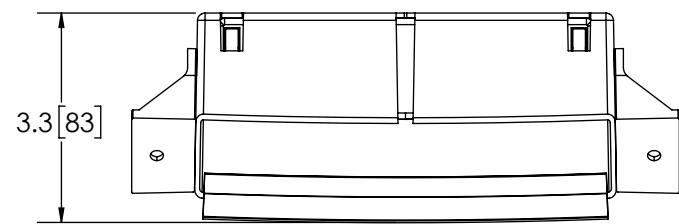


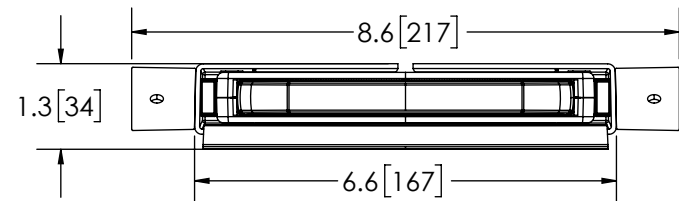
REVISION HISTORY		
REV.	DESCRIPTION	DATE
02	REVISED PER EL0232	2021-05-14
03	REVISED PER EL0232	2021-06-01
A	INITIAL RELEASE PER EL0232	2021-08-13



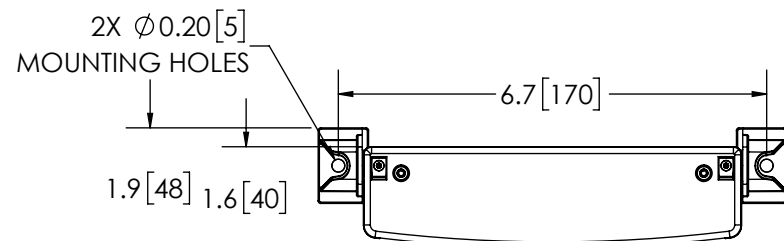
TOP VIEW WITH SHROUD & SUCTION CUPS



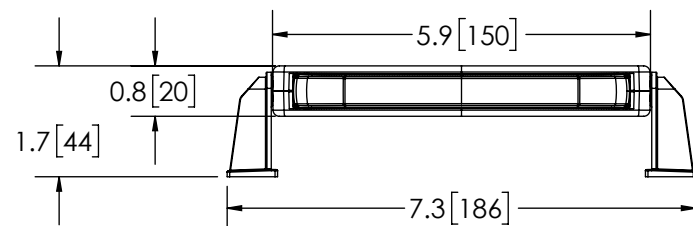
TOP VIEW WITH SHROUD



FRONT VIEW WITH SHROUD



TOP VIEW WITHOUT SHROUD



FRONT VIEW WITHOUT SHROUD

NOTES:

1. 142" CIGARETTE PLUG CABLE NOT SHOWN FOR CLARITY
2. ROHS COMPLIANT
3. DIMENSIONS IN INCHES[MILLIMETERS (FOR REFERENCE)]

MOUNTING DISCLAIMER

MOUNTING MEASUREMENT IS FOR REFERENCE ONLY. MEASURE BEFORE DRILLING.

PROPRIETARY AND CONFIDENTIAL INFORMATION
 THIS DRAWING AND THE DESIGN AND OTHER INFORMATION DISCLOSED HEREIN ARE THE PROPERTY OF ELECTRONIC CONTROLS COMPANY AND/OR ITS ECCO SAFETY GROUP AFFILIATES ("ECCO") AND IS ISSUED IN CONFIDENCE TO RECIPIENT FOR ENGINEERING INFORMATION PURPOSES ONLY. THIS DRAWING AND THE DESIGN AND OTHER INFORMATION DISCLOSED HEREIN MAY NOT BE USED, COPIED, REPRODUCED OR OTHERWISE DISCLOSED IN PART OR IN WHOLE TO THIRD PARTIES OR USED FOR ANY OTHER PURPOSE WITHOUT PRIOR ECCO WRITTEN CONSENT. ECCO RESERVES ALL PATENT, COPYRIGHT, TRADEMARK AND OTHER PROPRIETARY RIGHTS TO THIS DOCUMENT, INCLUDING ALL DESIGN, MANUFACTURING, REPRODUCTION, USE AND SALES RIGHTS THEREIN. THIS DRAWING IS SUBJECT TO RECALL BY ECCO AT ANY TIME, AND YOUR POSSESSION AND/OR USE CONSTITUTES ACCEPTANCE OF THESE TERMS. ©2021 ELECTRONIC CONTROLS COMPANY

SPECIFICATIONS

1. CERTIFICATIONS: ECE R10; SAE J595 (MAR 2014) CLASS 1; CA Title 13 CLASS B; IP67
 Note: Unique components, accessories, and hardware kits are not typically included in the Product Certification Test Protocols. Unless otherwise Specified, the Product Certifications referred to herein are predicated upon the base product model configuration.
2. FLASH MODE: SINGLE : 75 ± 5 FLASHES PER MINUTE
 SINGLE : 375 ± 5 FLASHES PER MINUTE
 DOUBLE : 75 ± 5 FLASHES PER MINUTE
3. VOLTAGE (NOMINAL): 12-24 VDC
4. VOLTAGE (EXTREME): 9-32 VDC
5. CURRENT (PEAK): SEE CHART (@ 12 VDC NOMINAL)
6. POWER (MAXIMUM): SEE CHART (@ 12 VDC NOMINAL)
7. TEMPERATURE RANGE: -22°F (-30°C) TO 122°F (50°C)
8. CONNECTION: CIG PLUG CABLE W/DUAL SWITCH
9. MOUNTING: ADHESIVE, SUCTION CUP OR 2 SCREWS
10. BASE MATERIAL: POLYCARBONATE, BLACK
11. LENS MATERIAL: POLYCARBONATE, UV STABILIZED
12. PRODUCT WEIGHT: 0.95 LBS (0.43 Kg)

FGS PRODUCT CHART					
FGS. NO.	COLOR	CURRENT (PEAK) A	POWER (MAX) W	SAE J595	CA T13
ED5051VDL1-AB	AMB/BLU	0.79	10.1	CLASS 1; YELLOW, BLUE	CLASS B
ED5051VDL1-AW	AMB/WHT	0.83	10.6	CLASS 1; YELLOW, WHITE	CLASS B
ED5051VDL1-BW	BLU/WHT	0.84	10.7	CLASS 1; BLUE, WHITE	CLASS B
ED5051VDL1-RB	RED/BLU	0.78	9.9	CLASS 1; RED, BLUE	CLASS B BLUE, CLASS E RED
ED5051VDL1-RW	RED/WHT	0.78	9.9	CLASS 1; RED, WHITE	CLASS B

DISCLAIMER

DIMENSIONS, ILLUSTRATIONS, SPECIFICATIONS, AND CERTIFICATIONS CONTAINED IN THIS DOCUMENT ARE TYPICAL OF THE ACTUAL PRODUCT AND ARE SUBJECT TO CHANGE. ESG ENGINEERING DOES NOT MAINTAIN FORMAL DESIGN CONTROL OF THIS PRODUCT.

SCALE 1:3		APPROVALS	DATE
CAD GENERATED DRAWING DO NOT MANUALLY UPDATE. MODEL REFERENCED: 01		DRAWN BY JW	2021-06-01
TOLERANCES ARE IN INCHES, AND MILLIMETERS TOLERANCES UNLESS OTHERWISE STATED ARE:		CHECKED MDH	2021-06-01
MILLIMETERS DECIMALS	INCHES DECIMALS	MECH. ENG. JLA	2021-06-01
XX. ± 1.0mm	X.X ± 0.1	ELEC. ENG. SPO	2021-06-02
XX.X ± 0.5mm	X.XX ± 0.04	TEST ENG. JRT	2021-07-20
	X.XXX ± 0.02	SALES.	
	FRACTIONS ± 1/64		
THIRD ANGLE PROJECTION			
Electronically Controlled Use Latest Copy		SHEET 1 OF 1	

ECCO ® www.eccolink.com Americas (800) 635-5900 Europe +44 (0)113 237 5340 Asia Pacific +61 (0)3 63322444	
DIRECTIONAL, VISOR, DECK, DASH, 1 LIGHT	
CUSTOMER PART NO. SEE CHART	
SIZE: B	DWG. NO. ED5051VDL1-XX
Project: EL0232	Date Created: 2021-05-05
REVISION: A	