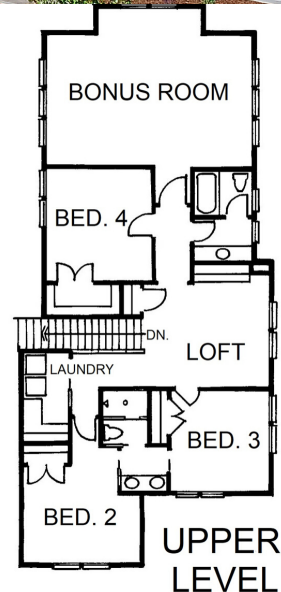
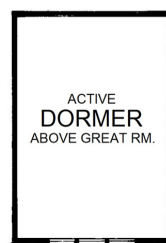
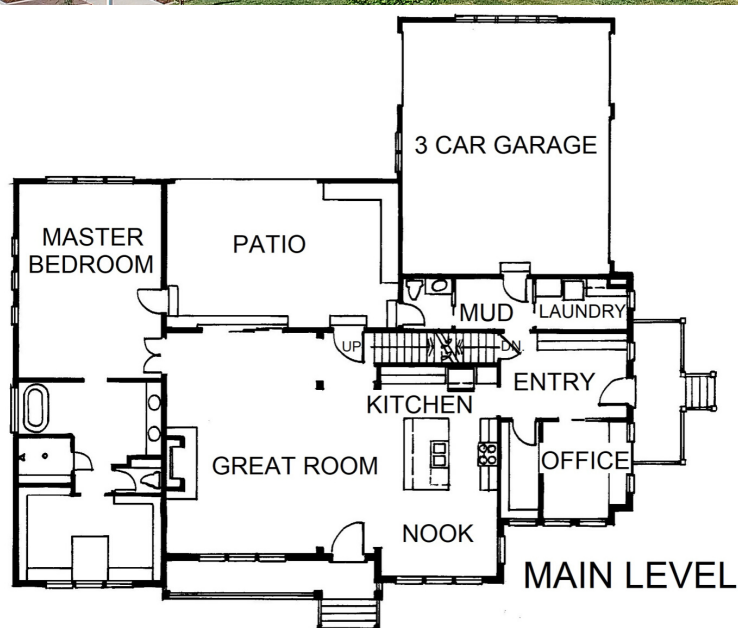


Heritage Craft Homes

Ginger's Heritage



Ginger's Heritage Features at a glance

- Total 4,126 SQFT
- All aspects are Professional designed by inhouse team
- Award Winning
- 4 Beds
- 3.5 Baths
- 2 laundry rooms
- 3 car garage
- Office
- Custom Cabinets

Heritage Craft Homes Provides you with a unique experience of Two Story Living with the convenience of One Story Living. Everything is professionally selected with expertise from our inhouse design team

HERITAGECRAFTHOMES.COM
801-388-4091

2414 N 4350 W
Plain City, UT 84404

Award Winning Features

- Three Panel Craftsman interior doors
- One Tone Paint throughout home
- Textured Drywall finish with rounded corners
- Moen chrome plumbing fixtures and hardware throughout
- Tile tub and shower surrounds from Heritage Craft Homes selections
- Upgraded Laminate Vanity Countertops
- One Cat5 and TV Outlet
- 4.5" Craftsman Baseboards and 3" Continuous Door Casings
- Space Saver closet shelving with Dual Rod and Shelves

- Laminate Flooring in Kitchen, Entry and Nook
- HCH Standard Satin Resistant Carpet throughout
- Luxury Vinyl Tiles in bathrooms and laundry
- Stainless Whirlpool Appliances inc. freestanding range w micro over & dishwasher
- Knotty Alder cabinets with HCH Selection of recessed panel doors and stains
- Built in 4 row shelving in pantry
- Up to 6' Kitchen Island
- Upgraded Laminate Countertops
- 30" Upper cabinets
- Garbage Disposal in Kitchen Sink

Pricing Options

Gold Package Highlights

- Specialty lighting package
- Upgraded Stainless steel appliance package
- 2-tone paint
- 5 shelf organizers in pantry and closets
- Laminate flooring in kitchen, Entry and Nook

Cost to Upgrade \$25,000

Platinum Package Highlights

- Granite or Quartz Countertop Selection
- 3-tone paint, Living room and Kitchen Area
- Gourmet Kitchen Hood with 490 Vented Range
- Upgraded Trim Package
- Upgraded to GE Black Stainless Appliance Package

Cost to Upgrade \$50,000

Base Price slab on grade

- \$759,900
- **Price with Gold Package and Finished Basement**
- \$880,900

Price with Platinum Package and Finished Basement

- \$905,900

***See Bid Sheet for complete pricing analysis
Prices good through 5/1/2020***

- Base Price includes Standard inclusions, Please see the standard inclusion sheet for all standard inclusions
- Upgrades to Gold and Platinum Packages is an additional cost to base price, Please see upgrade list for complete upgrade inclusions
- Home will match package buyer selects and will not be identical to any rendering or other home

Best of Wasatch Award's

Connect with us on Social Media



@HeritageCraftHomes



@HeritageCraftHomes