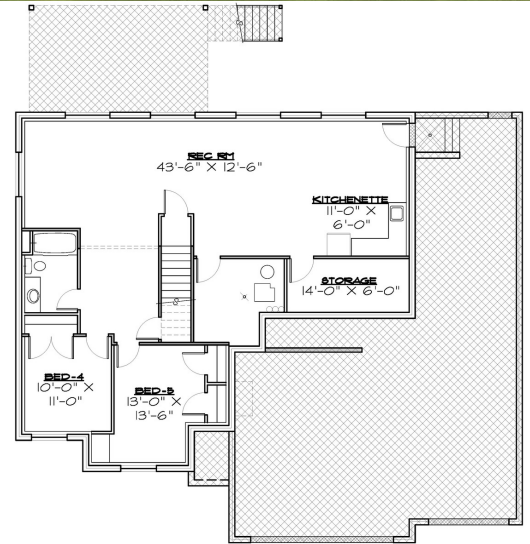
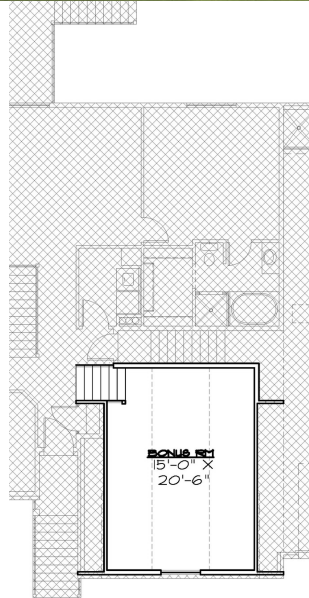
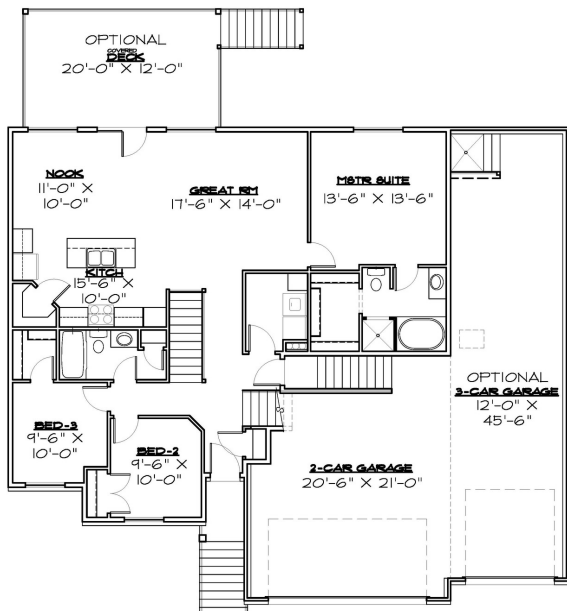


Heritage Craft
Homes

Bailey Plan



Bailey Specs

- 1419 SQFT Slab on Grade
- 1499 Optional Basement SQFT
- 326 SQFT Bonus Room
- 3 Beds
- 2 Baths
- 3 car Garage
- Standard inclusions
- 69' Width • 53' 6" Depth

Heritage Craft Homes has a wide variety of home designs and customization packages. Please contact us today to find out more about building your future home.

HERITAGECRAFTHOMES.COM
801-317-1715

4089 W 2400 N Plain City,
Utah 84404



Standard Inclusions

- Three Panel Craftsman interior doors
- One Tone Paint throughout home
- Textured Drywall finish with rounded corners
- Moen chrome plumbing fixtures and hardware throughout
- Tile tub and shower surrounds from Heritage Craft Homes selections
- Upgraded Laminate Vanity Countertops
- One Cat5 and TV Outlet
- 4.5" Craftsman Baseboards and 3" Continuous Door Casings
- Space Saver closet shelving with Dual Rod and Shelves
- Laminate Flooring in Kitchen, Entry and Nook
- HCH Standard Satin Resistant Carpet throughout
- Luxury Vinyl Tiles in bathrooms and laundry
- Stainless Whirlpool Appliances inc. freestanding range w/ micro over & dishwasher
- Knotty Alder cabinets with HCH Selection of recessed panel doors and stains
- Built in 4 row shelving in pantry
- Up to 6' Kitchen Island
- Upgraded Laminate Countertops
- 30" Upper cabinets
- Garbage Disposal in Kitchen Sink

Pricing Options

Gold Package Highlights

- Specialty lighting package
- Upgraded Stainless steel appliance package
- 2-tone paint
- 5 shelf organizers in pantry and closets
- Laminate flooring in kitchen, Entry and Nook

Cost to Upgrade \$15,000

Platinum Package Highlights

- Granite or Quartz Countertop Selection
- 3-tone paint, Living room and Kitchen Area
- Gourmet Kitchen Hood with 490 Vented Range
- Upgraded Trim Package
- Upgraded to GE Black Stainless Appliance Package

Cost to Upgrade \$30,000

Base Price No Bonus

- \$354,900

Base Price With Bonus

- \$374,900

Price with Finished Basement

- \$403,247 (No Bonus)
- \$423,247 (With Bonus)

Price with Gold Package and Finished Basement

- \$418,247 (No Bonus)
- \$438,247 (With Bonus)

Price with Platinum Package and Finished Basement

- \$433,247 (No Bonus)
- \$453,247 (With Bonus)

***See Bid Sheet for complete pricing analysis
Prices good through 7/31/2019***

- Base Price includes Standard inclusions, Please see the standard inclusion sheet for all standard inclusions
- Upgrades to Gold and Platinum Packages is an additional cost to base price, Please see upgrade list for complete upgrade inclusions
- Home will match package buyer selects and will not be identical to any rendering or other home

Connect with us on Social Media



@HeritageCraftRealEstate



@HeritageCraftRealEstate

Stephanie  Taylor
And Associates
A Realtypath Group