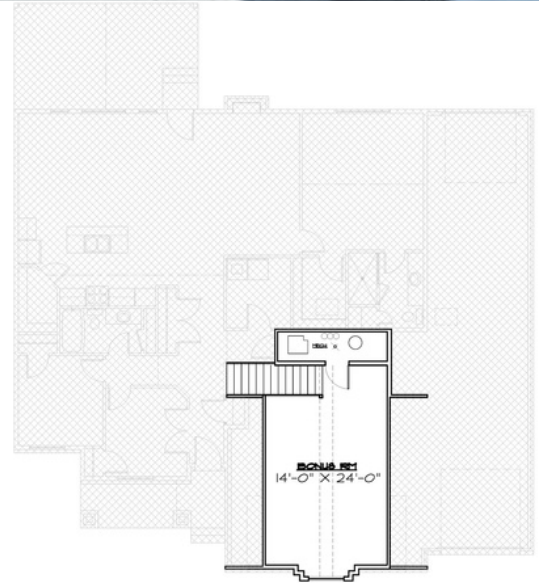
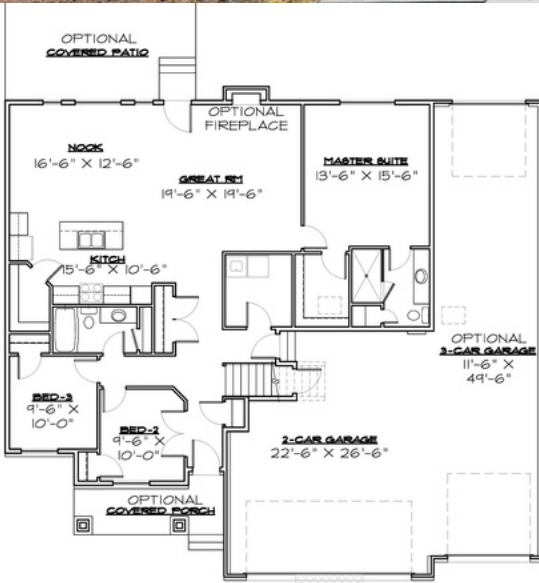


Current available build:
Lot 304 Taylor Parks 3
2265 N 3825 W Plain City



Wright Specs

- 1619 SQFT Slab on Grade
- 3 Beds 2 Baths
- 3 car Garage
- 326 SQFT Bonus room

48' 4" Width 59' 6" Depth

Heritage Craft Homes has a wide variety of home designs. Please contact us today to find out more about building your future home.



Standard Inclusions

EXTERIOR FEATURES

- Low maintenance aluminum soffit and fascia
- 30 Year Architectural Shingles
- 6' 8" Fiberglass Front Door, Paintable
- Deadbolt Locks on all Outdoor Swinging Entry Doors
- 8' Panel Garage Doors with Exterior Carriage Lighting
- Automatic Garage Door Openers with remote controls
- 2 Exterior Weatherproof outlets at Front and Back Entry
- 2 Exterior Freeze Free Water Faucets
- Full Hard Coat Stucco Exterior
- 3' Rock Wainscoting on Front Elevation of Home

ENERGY EFFICIENT

- 95 % Efficient Natural Gas Furnace
- 95% Energy Efficient Tankless Water Heater
- 2x6 Exterior Wall Construction
- Energy Conserving R-19 2x6 Wall Insulation and R-38 Ceiling
- Programmable Thermostat
- Energy Efficient Dual Glazed Low E Glass Vinyl Windows White or Almond
- Full LED Lighting Package throughout home

INTERIOR FEATURES

- Full gourmet kitchen with upgraded appliances and deco hood vent
- Three Panel Craftsman interior doors
- One Tone Paint throughout home
- Textured Drywall finish with rounded corners
- Satin Nickel, or black fixtures throughout
- Marble Tub and shower surrounds
- Granite or Quartz Countertops from HCH selections
- Three Cat5 and TV Outlets in predetermined locations
- Satin Nickel or black lighting package
- Craftsman Trim Package
- Space Saver closet shelving with Dual Rod
- Laminate Flooring in Kitchen, Entry , Baths, Laundry
- HCH Standard Satin Resistant Carpet
- Moen brushed nickel or black plumbing fixtures and hardware throughout
- 4.5" Craftsman Baseboards and 3" Continuous Door Casings
- 9' Basement Ceilings
- Stainless Appliances
- Stained Knotty Alder or painted cabinets with HCH
- Selection of recessed panel doors
- Up to 6' Kitchen Island
- 36" Upper cabinets
- Garbage Disposal in Kitchen Sink
- Euro Glass Shower Doors

Slab on Grade

\$594,900

Connect with us on Social Media



@HeritageCraftHomes



@HeritageCraftHomes

@HeritageCraftHomes