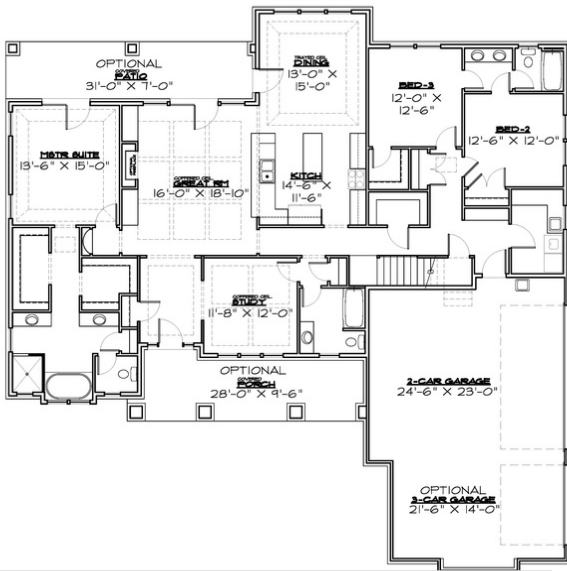
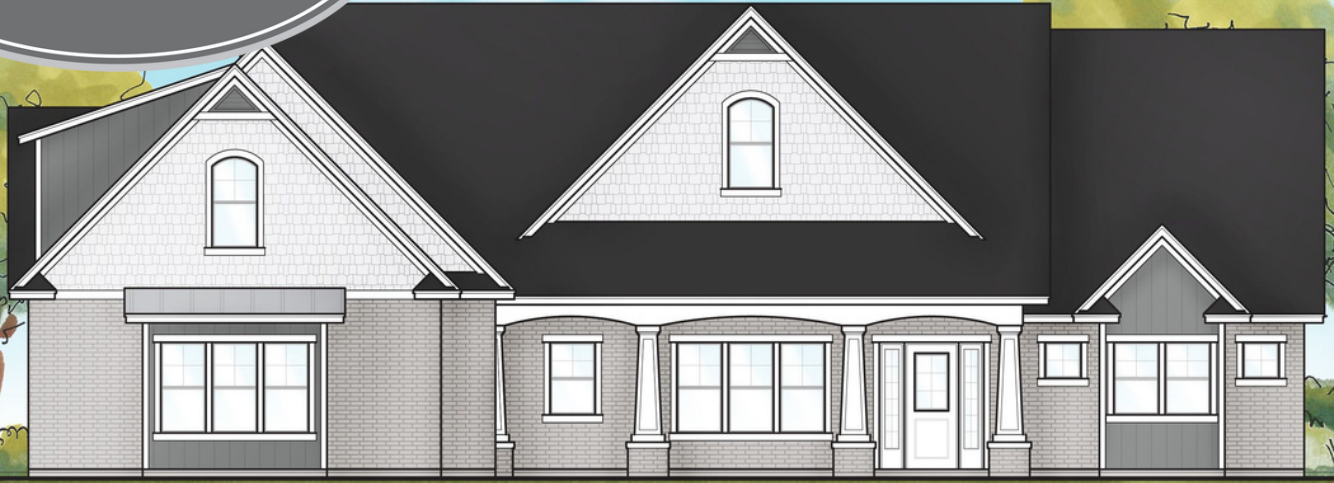


# Eden Plan

Heritage Craft  
Homes

Current available builds:  
Lot 325 Taylor Parks 3 (2216 N 3825 W Plain City)



## Eden Specs

- 2416 SQFT Slab on Grade
- 591 SQFT Bonus Room
- 3 Beds
- 3 Baths
- 3 car Garage
- 65' 8" Width
- 70' 5" Depth

Heritage Craft Homes has a wide variety of home designs. Please contact us today to find out more about building your future home.

HERITAGECRAFTHOMES.COM  
801-388-4091

2414 N 4350 W  
Plain City, UT 84404

# Heritage Craft Homes

## Standard Inclusions

- EXTERIOR FEATURES
  - Low maintenance aluminum soffit and fascia
  - 30 Year Architectural Shingles
  - 6' 8" Fiberglass Front Door, Paintable
  - Deadbolt Locks on all Outdoor Swinging Entry Doors
  - 8' Panel Garage Doors with Exterior Carriage Lighting
  - Automatic Garage Door Openers with remote controls
  - 2 Exterior Weatherproof outlets at Front and Back Entry
  - 2 Exterior Freeze Free Water Faucets
  - Full Hard Coat Stucco Exterior
  - 3' Rock Wainscoting on Front Elevation of Home
  - 
  - ENERGY EFFICIENT
  - 95 % Efficient Natural Gas Furnace
  - 95% Energy Efficient Tankless Water Heater
  - 2x6 Exterior Wall Construction
  - Energy Conserving R-19 2x6 Wall Insulation and R-38 Ceiling
  - Programmable Thermostat
  - Energy Efficient Dual Glazed Low E Glass Vinyl Windows White or Almond
  - Full LED Lighting Package throughout home
- INTERIOR FEATURES
  - Full gourmet kitchen with upgraded appliances and deco hood vent
  - Three Panel Craftsman interior doors
  - One Tone Paint throughout home
  - Textured Drywall finish with rounded corners
  - Satin Nickel, or black fixtures throughout
  - Marble Tub and shower surrounds
  - Granite or Quartz Countertops from HCH selections
  - Three Cat5 and TV Outlets in predetermined locations
  - Satin Nickel or black lighting package
  - Craftsman Trim Package
  - Space Saver closet shelving with Dual Rod
  - Laminate Flooring in Kitchen, Entry , Baths, Laundry
  - HCH Standard Satin Resistant Carpet
  - Moen brushed nickel or black plumbing fixtures and hardware throughout
  - 4.5" Craftsman Baseboards and 3" Continuous Door Casings
  - 9' Basement Ceilings
  - Stainless Appliances
  - Stained Knotty Alder or painted cabinets with HCH Selection of recessed panel doors
  - Up to 6' Kitchen Island
  - 36" Upper cabinets
  - Garbage Disposal in Kitchen Sink
  - Euro Glass Shower Doors

**Base Price W/Bonus Slab on Grade**

**\$859,900**

\*\*\*Contact us for bids on more custom features  
Prices subject to change

**Connect with us on Social Media**



@HeritageCraftHomes



@HeritageCraftHomes