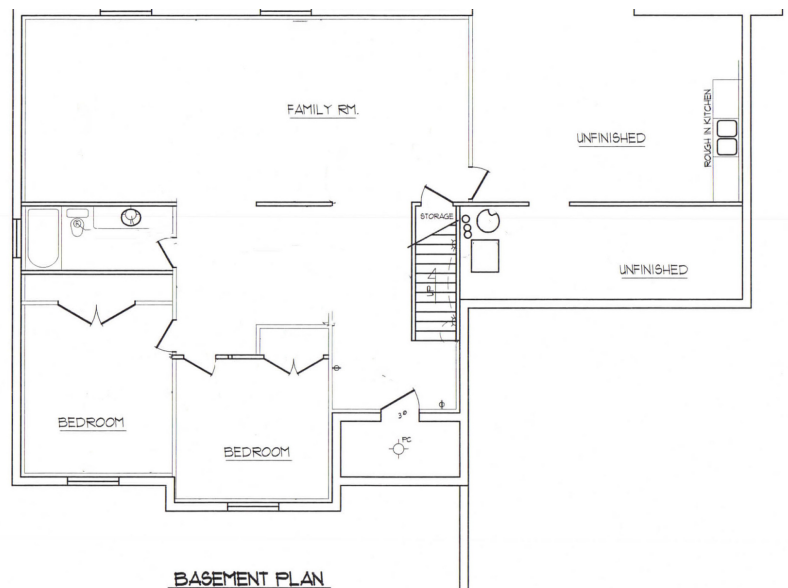
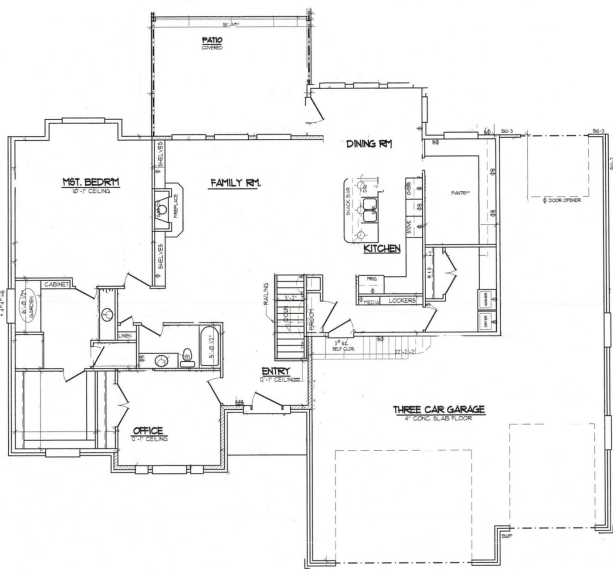
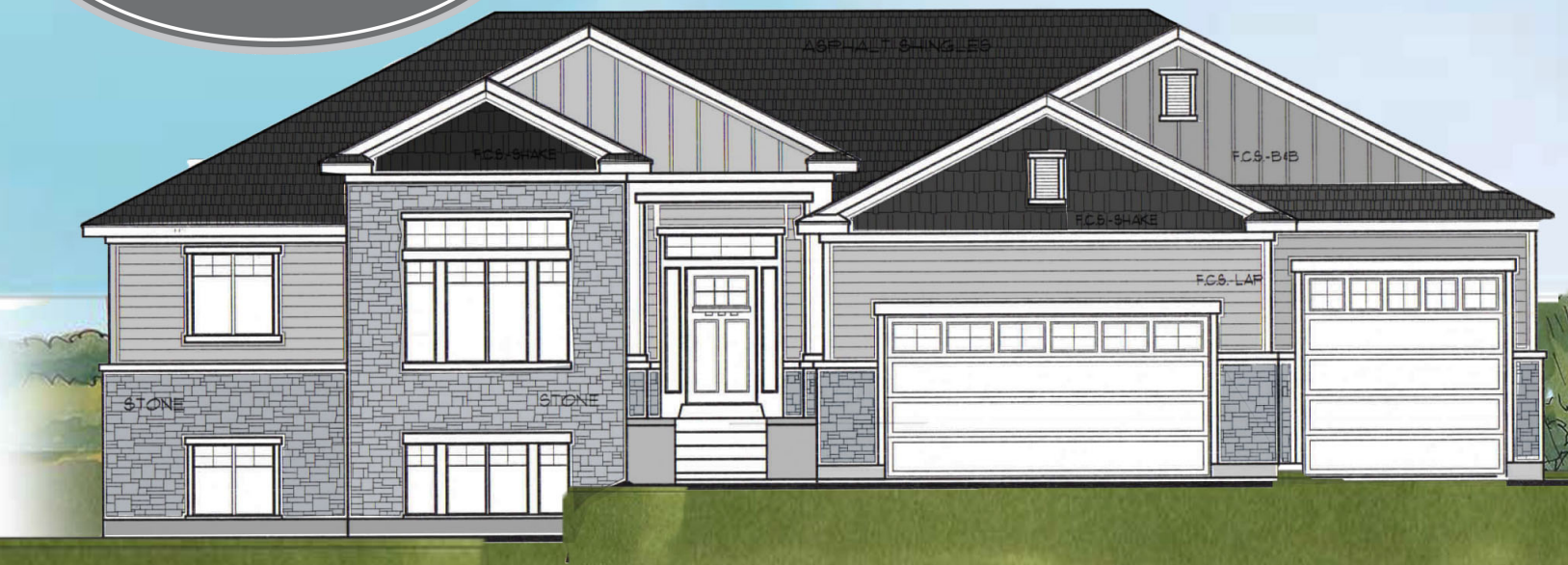


Emrey Plan



Emrey Specs

- 1931 SQFT Slab on Grade
- 2037 SQFT Basement
- 2 Beds
- 2 Baths
- 3 car Garage

- 70' 8" Width
- 46" 4" Depth

Heritage Craft Homes has a wide variety of home designs. Please contact us today to find out more about building your future home.

HERITAGECRAFTHOMES.COM
801-388-4091

2396 N 4350 W
Plain City, Utah



Heritage Craft Homes

Standard Inclusions

• EXTERIOR FEATURES

- Low maintenance aluminum soffit and fascia
 - 30 Year Architectural Shingles
 - 6' 8" Fiberglass Front Door, Paintable
 - Deadbolt Locks on all Outdoor Swinging Entry Doors
 - 8' Panel Garage Doors with Exterior Carriage Lighting
 - Automatic Garage Door Openers with remote controls
 - 2 Exterior Weatherproof outlets at Front and Back Entry
 - 2 Exterior Freeze Free Water Faucets
 - Full Hard Coat Stucco Exterior
 - 3' Rock Wainscoting on Front Elevation of Home
- ## • ENERGY EFFICIENT
- 95 % Efficient Natural Gas Furnace
 - 95% Energy Efficient Tankless Water Heater
 - 2x6 Exterior Wall Construction
 - Energy Conserving R-19 2x6 Wall Insulation and R-38 Ceiling
 - Programmable Thermostat
 - Energy Efficient Dual Glazed Low E Glass Vinyl Windows White or Almond
 - Full LED Lighting Package throughout home

• INTERIOR FEATURES

- Three Panel Craftsman interior doors
- One Tone Paint throughout home
- Textured Drywall finish with rounded corners
- Satin Nickel, or ORB fixtures throughout
- Marble Tub and shower surrounds
- Granite or Quartz Countertops from HCH selections
- Three Cat5 and TV Outlets in predetermined locations
- Satin Nickel or ORB lighting package
- Craftsman Trim Package
- Space Saver closet shelving with Dual Rod
- Laminate Flooring in Kitchen, Entry, Baths, Laundry
- HCH Standard Satin Resistant Carpet
- Moen brushed nickel or oil rubbed bronze or black plumbing fixtures and hardware throughout
- 4.5" Craftsman Baseboards and 3" Continuous Door Casings
- 9' Basement Ceilings
- Laminate Flooring in Kitchen, Entry and Nook and Bathrooms
- Stainless Whirlpool Appliances inc. freestanding range w/ micro over and dishwasher
- Stained Knotty Alder cabinets with HCH Selection of recessed panel doors
- Up to 6' Kitchen Island
- 36" Upper cabinets
- Garbage Disposal in Kitchen Sink
- Euro Glass Shower Doors

***Contact us for bids on
more custom features

Connect with us on Social Media



@HeritageCraftHomes



@HeritageCraftHomes