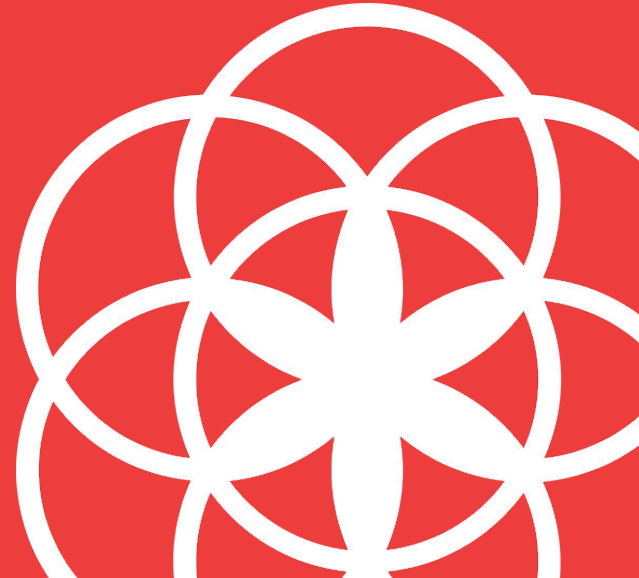


About Clue

Human Being, Title & Role, webinars@helloclue.com



What is Clue?

Clue is a period tracking app, a trusted menstrual health resource, and a thought leader in the FemTech movement.

By combining science and technology, we are actively changing the way people learn, access, and talk about menstrual and reproductive health around the world.



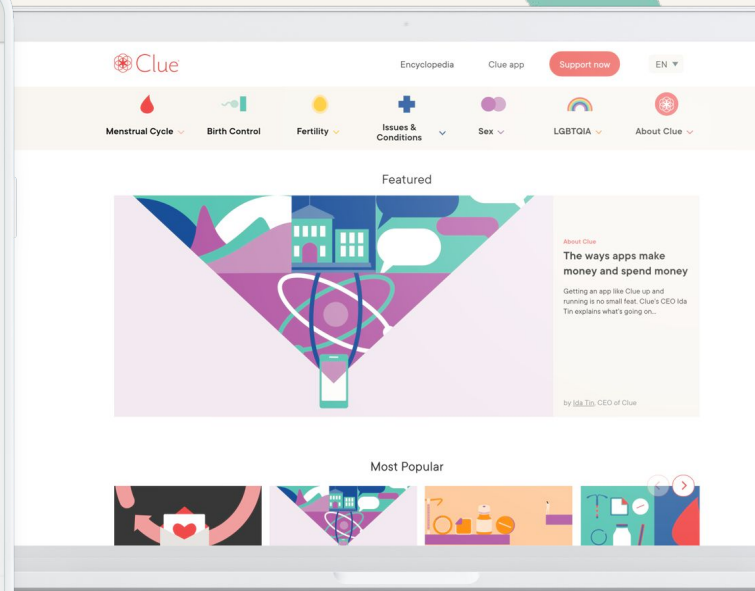
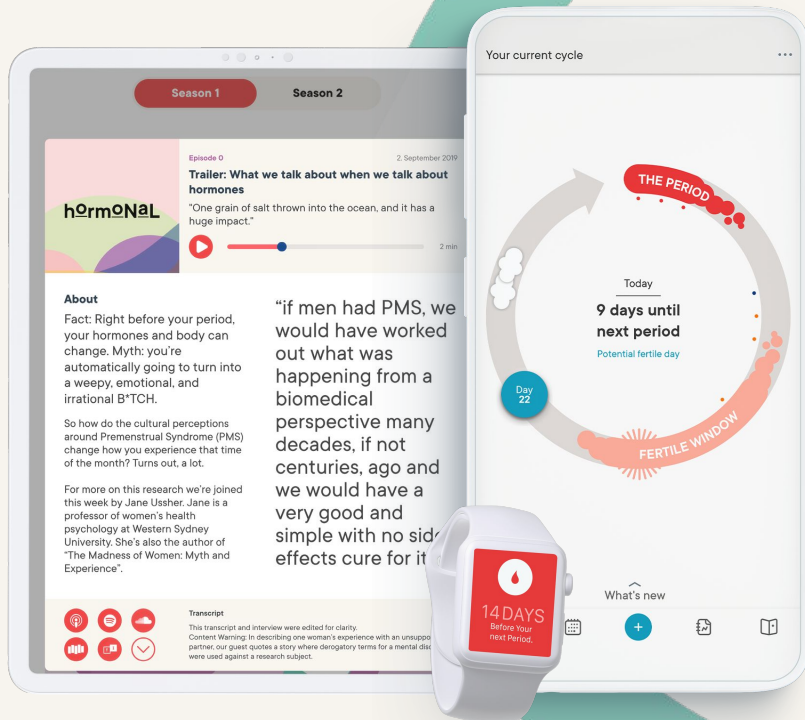
Clue is a period tracking app, a trusted menstrual health resource, and a thought leader in the FemTech movement.

12m
monthly app users

4.5m
monthly web readers

450+
science-based,
fact-checked articles

70
employees



Our mission

Our mission is to empower women and people with cycles with the science, data, and technology needed to make informed choices about their lives.

No matter where they are from or how they identify, our vision is for people with cycles to live in tune with their biology, not in spite of it.





**Trustworthy
Scientific
Empowering
Honest**



**more than just
a period tracker**

Become the expert on your body



Gain a deeper understanding of
how your body and mind are connected



Our research

We collaborate with clinicians and researchers to advance female health by obtaining informed consent for users to participate in research. Our company takes great care in protecting the data privacy of our users. We are located in Germany where data privacy is heavily regulated and our business model has never been to sell data or profit from the data. Instead, our approach has been to partner with clinicians.





Now you know.

helloclue.com