

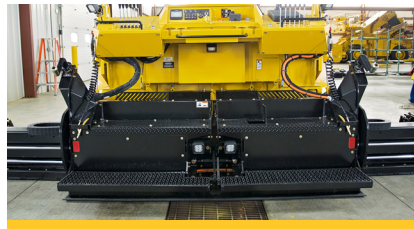
# P265

COMMERCIAL PAVER



## SIMPLE OPERATION.

Mechanical controls provide simple and reliable operation. Push button keypads for feeder system and cable operated ground drive controls allow operation from either side of the machine.



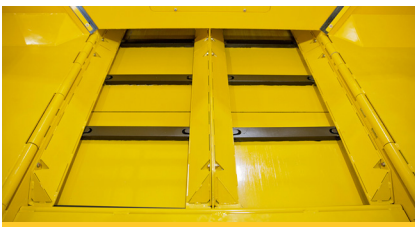
## HEAVY DUTY SCREED.

The Weiler designed 3,000 lb (1,360 kg) screed delivers outstanding mat quality and a paving range of 7' 8" (2.3 m) to 14' 4" (4.4 m). Weiler's patented end gate design allows quick adjustments for extension height and joint matching.



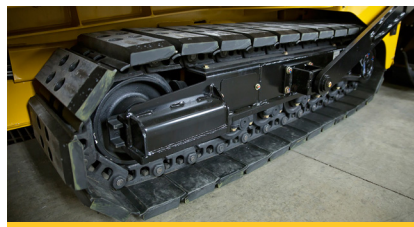
## PRECISE CONTROL.

Screed mounted upper and lower 9" (228 mm) augers and independent control of each side of the delivery system provide precise material control for variable width paving. Flow gate style cut-off doors and reversible augers and conveyors limit spillage between passes.



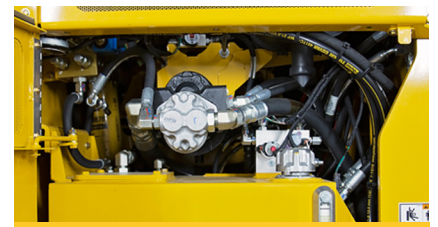
## DURABLE COMPONENTS.

Highway class chains, conveyor and auger bearings and direct-drive conveyor head shaft provide long-term reliability. Replaceable components maximize the life of the paver.



## POWER TO PUSH.

Cat® C3.4B Tier 4 engine with 74 hp (55 kW) powers the best-in-class 70" (1778 mm) track length undercarriage through a 2-speed hydrostatic drive. Optional 14" (356 mm) performance, poly pads and standard 125 mm track chain pitch optimize the ride with a 250 fpm (76 mpm) max transport speed.



## FAST SERVICE.

Remote grease lines, spray down system with four (4) coiled hoses located on each corner of the paver, five (5) engine access doors and Caterpillar dealer service and support keep your machine up and running with limited machine down time.

# P265 SPECIFICATIONS

|                        |           |         |                              |                       |                           |                        |                   |
|------------------------|-----------|---------|------------------------------|-----------------------|---------------------------|------------------------|-------------------|
| <b>WEIGHT</b>          | 16,200 lb | 7348 kg | <b>SCREED WEIGHT</b>         | 3,000 lb              | 1360 kg                   | <b>ENGINE</b>          | Cat® C3.4B Tier 4 |
| <b>LENGTH</b>          | 12' 7"    | 3.835 m | <b>MAIN PLATE WIDTH</b>      | 16.5"                 | 419 mm                    | <b>PAVING SPEED</b>    | 150 fpm 45 mpm    |
| <b>WIDTH</b>           | 8' 2"     | 2.489 m | <b>EXTENSION PLATE WIDTH</b> | 9"                    | 228 mm                    | <b>TRANSPORT SPEED</b> | 250 fpm 76 mpm    |
| <b>HEIGHT</b>          | 5' 10"    | 1.778 m | <b>SCREED HEAT</b>           | Electric - 4 elements | <b>FUEL CAPACITY</b>      | 26 gal 98 L            |                   |
| <b>TRUCK CLEARANCE</b> | 18"       | 457 mm  | <b>VIBRATION</b>             | 1 x 2500 vpm          | <b>HYDRAULIC CAPACITY</b> | 30 gal 113 L           |                   |
| <b>AUGER DIAMETER</b>  | 9"        | 228 mm  | <b>AUGER SPEED</b>           | 110 rpm               |                           |                        |                   |

## POWERTRAIN

Cat® C3.4B Tier 4 engine with 74 hp (55 kW) and no DEF  
2-Speed hydrostatic drive, 250 fpm (76 mpm) transport speed  
Automatic track tensioning  
70" (1778 mm) track length with 53" (1346 mm) of ground contact  
14" (356 mm) performance, poly track pad option  
5 track rollers per side  
125 mm track chain pitch  
Hydraulically driven 12 kW generator

## OPERATING ENVIRONMENT

Dual side operation  
Cable operated ground drive controls  
Push button keypads for feeder system  
LCD display provides conditions and diagnostics  
Pause mode enables return to same settings

## MATERIAL DELIVERY

7-ton (6.35 mt) hopper  
Replaceable floor plates  
Heavy-duty chains and flight bars  
Direct-drive conveyor head shaft  
Reversible augers and conveyors  
Flow gate style cut-off door  
Independent auger and conveyor control  
Adjustable push roller  
Independent hopper control

## SALES AND SERVICE

Sold and serviced exclusively through Caterpillar dealers worldwide.

## SCREED

7' 8" (2.3 m) to 14' 4" (4.4 m) standard paving width  
4 element electric heated screed  
3/8" (9.5 mm) thick screed plates  
Screed mounted upper and lower 9" (228 mm) augers  
Sonic feed sensors optional  
Manual crown adjustment (+-3%)  
Folding rear walkway  
Patented end gate design

## SERVICE/MAINTENANCE

8-gal (30 L) spray down system with 4 coiled hoses  
Braided electrical harnesses and sealed connections  
Color-coded electrical wires  
12-volt electric system with automotive-type fuses  
Remote grease fittings  
5 engine access doors  
Lockable vandal cover and engine access doors

## OPTIONAL EQUIPMENT

14" (356 mm) poly track pads  
LED strobe light  
Work lights (4)  
Premium LED lights (8)  
Sonic controlled augers  
Heated end gates  
Hydraulic tow points  
Topcon grade and slope  
MOBA grade and slope

## WARRANTY

12 months standard. Extended warranty available.