

Cat[®] Electronic Technician (ET)



Maintain Productivity and Control Cost

Quickly reduce engine and machine downtime, control costs and schedule repairs more efficiently by diagnosing problems using Cat[®] Electronic Technician (ET).

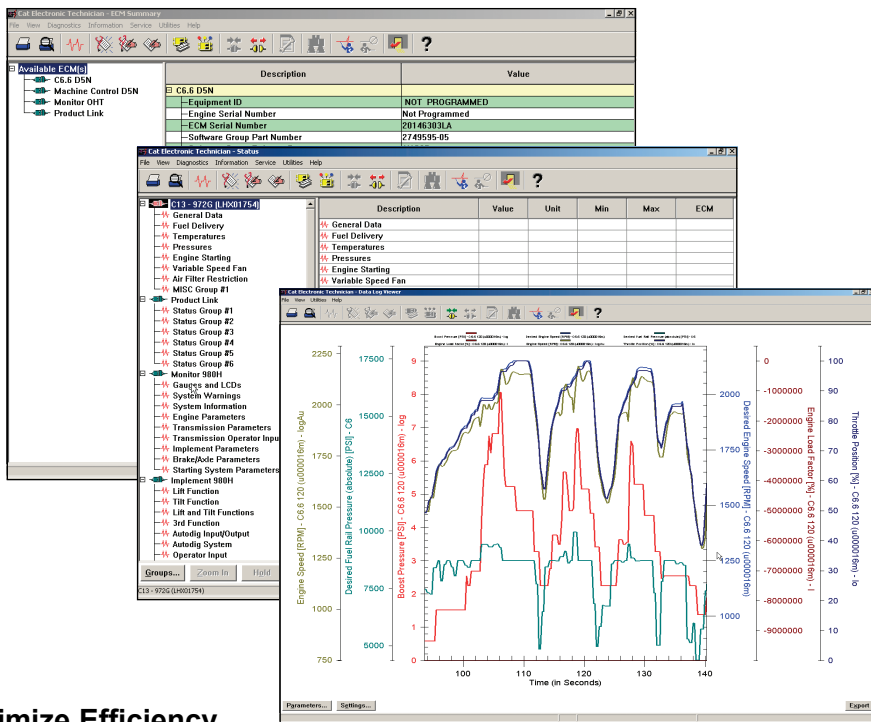
Cat ET is easy to use. The software accesses information from the electronic control modules on Cat engines and equipment. Using Cat ET, technicians can view status parameters, logged codes, active codes, perform functional tests, and record and view data logs of equipment operation.



Cat® Electronic Technician

Optimize Profitability

- View active and logged diagnostic codes to quickly identify faulty sensors.
- Review logged event codes to show engine overspeeds, high temperatures, and more.
- Monitor fuel consumption.
- Perform diagnostic tests to quickly identify the root cause of problems.
- Calibrate key components to ensure maximum operating efficiency.
- Use Data Logger to record real-time data.
- View previously recorded data logs to monitor trends in the health of your equipment to ensure peak performance.



Maximize Efficiency

- Search help options to guide every task.
- Retrieve engine data quickly for fuel used, miles traveled, idle time and hours operated.
- Display status of engine speed, throttle position, timing advance, fuel flow and more.
- Check an electronic control module's configuration and change user settings.

Recommended Configurations

- PC containing a 2.0 GHz dual-core processor-
- 3GB RAM
- 3GB of available hard disk drive
- DVD-ROM drive
- 15.4 inch XGA Screen (1280x1024 compatible)
- Microsoft Windows™ 7 Professional, Windows 8 Professional and Windows 10 (Note: The Microsoft Surface Pro is supported)
- RS232 port with 16550AF UART or compatible (for use with Comm Adapter II)
- USB 1.1, 2.0 or 3.0 port, (for use with Comm Adapter 3)
- Ethernet RJ45 connector
- Built in mouse, pointing device, or touch screen
- For security purposes, Microsoft Browsers version 11 or newer or Microsoft Edge is recommended.
- (Note: The most recent version of Microsoft browsers may not be validated to work with the service tool.)
- Wi-Fi (for the Wireless Comm Adapter 3)

Recommended Communication Hardware

- 466-6258 Communication Adapter 3 Group
This tool group includes all of the pieces listed below. They are also available as individual parts.
- 317-7485 Communications Adapter 3 (CA3)
- 370-4617 PC Cable (USB) Assembly
- 457-6114 Data Link Cable Assembly
- NETG5057 Media CD
- NEHS1032 Tool Operating Manual (on CD)
- 6V-7145 Carrying Case

CAT DEALERS DEFINE WORLD-CLASS PRODUCT SUPPORT

We offer you the right parts and service solutions, when and where you need them.

The Cat dealer network of highly trained experts can help you maximize your equipment investment.



NEDG6015-08
www.cat.com

© 2016 Caterpillar • All Rights Reserved • Printed in USA
CAT, CATERPILLAR, their respective logos, "Caterpillar Yellow" and the "Power Edge" trade dress, as well as corporate and product identity used herein, are trademarks of Caterpillar and may not be used without permission.

